

Silent Sports Guide *Waupaca Area*

BIKING • HIKING • PADDLING • SKIING • SNOWSHOEING



WAUPACA

CHAIN O' LAKES

Welcome

to the Waupaca Area

The Waupaca area has a reputable history of being a vacation destination. The fishing, boating, restaurant selections, lodging/camping, and shopping opportunities have persistently been reason enough to frequent the area. However, the attractions are becoming increasingly diversified. Waupaca and the surrounding area offer many opportunities to satisfy the growing popularity of silent sport activities.

The intent of this guide is to direct silent sport enthusiasts to some of the most note worthy venues in the Waupaca area. The options brought forth are intended to satisfy both the beginner and advanced adventurer.

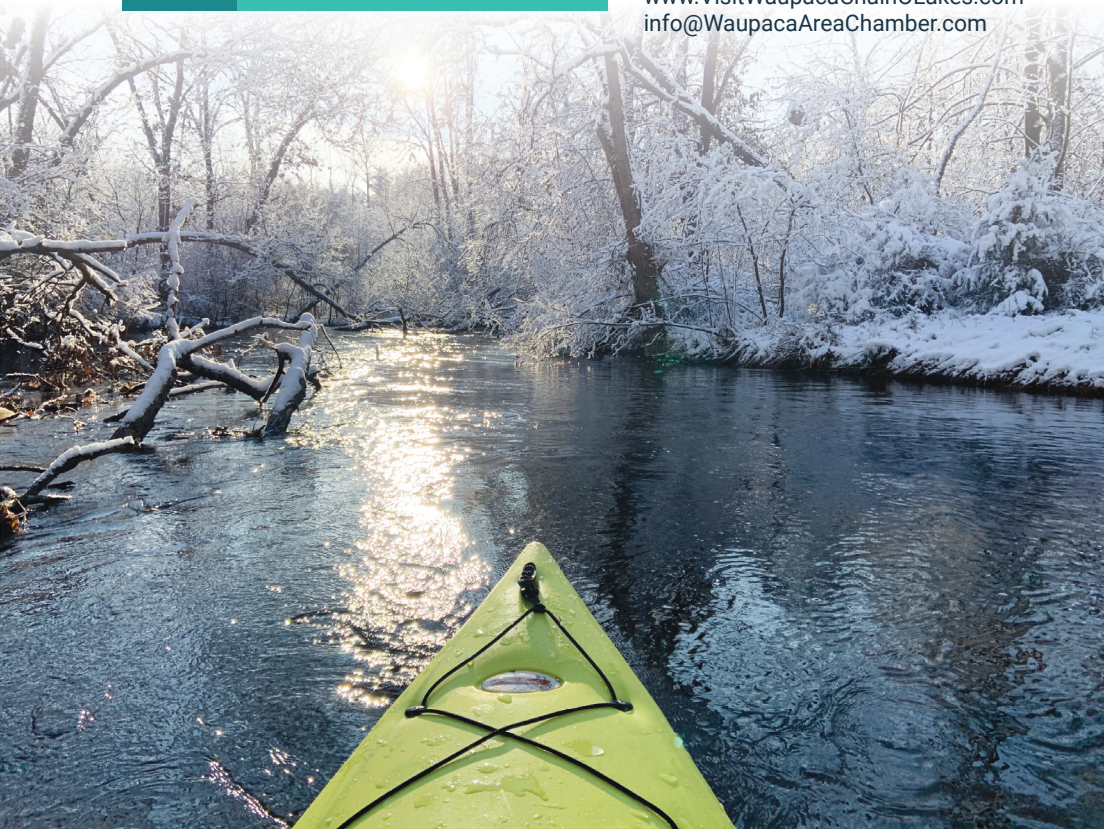


Waupaca Area Convention & Visitor Bureau

315 South Main Street
Waupaca, WI 54981

715-258-7343

www.VisitWaupacaChainOLakes.com
info@WaupacaAreaChamber.com



Contents

	Overview Map	Pages 4-5
SUMMER	Paddling - Flat Water	Pages 6-7
	Paddling - Moving Water	Pages 8-15
	Hiking	Pages 16-27
	Biking - Road	Pages 28-33
	Biking - Recreational Trail (Paved)	Pages 34-35
	Biking - Recreational Trail (Non-Paved)	Pages 36-39
	Biking - Single Track	Pages 40-43
WINTER	Biking - Winter Fat	Pages 44-47
	Cross-Country Skiing - Classic	Pages 48-55
	Cross-Country Skiing - Skate	Pages 56-61
	Snowshoeing	Pages 62-71

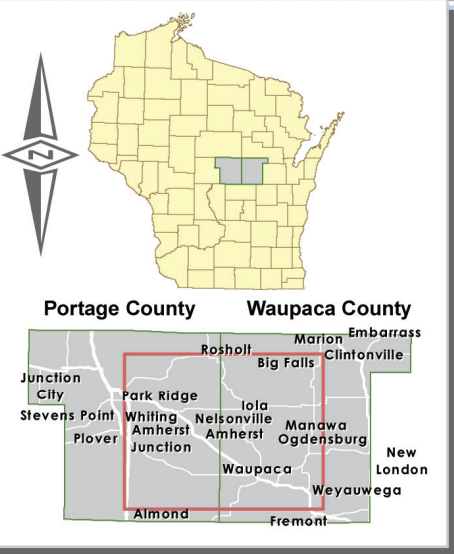
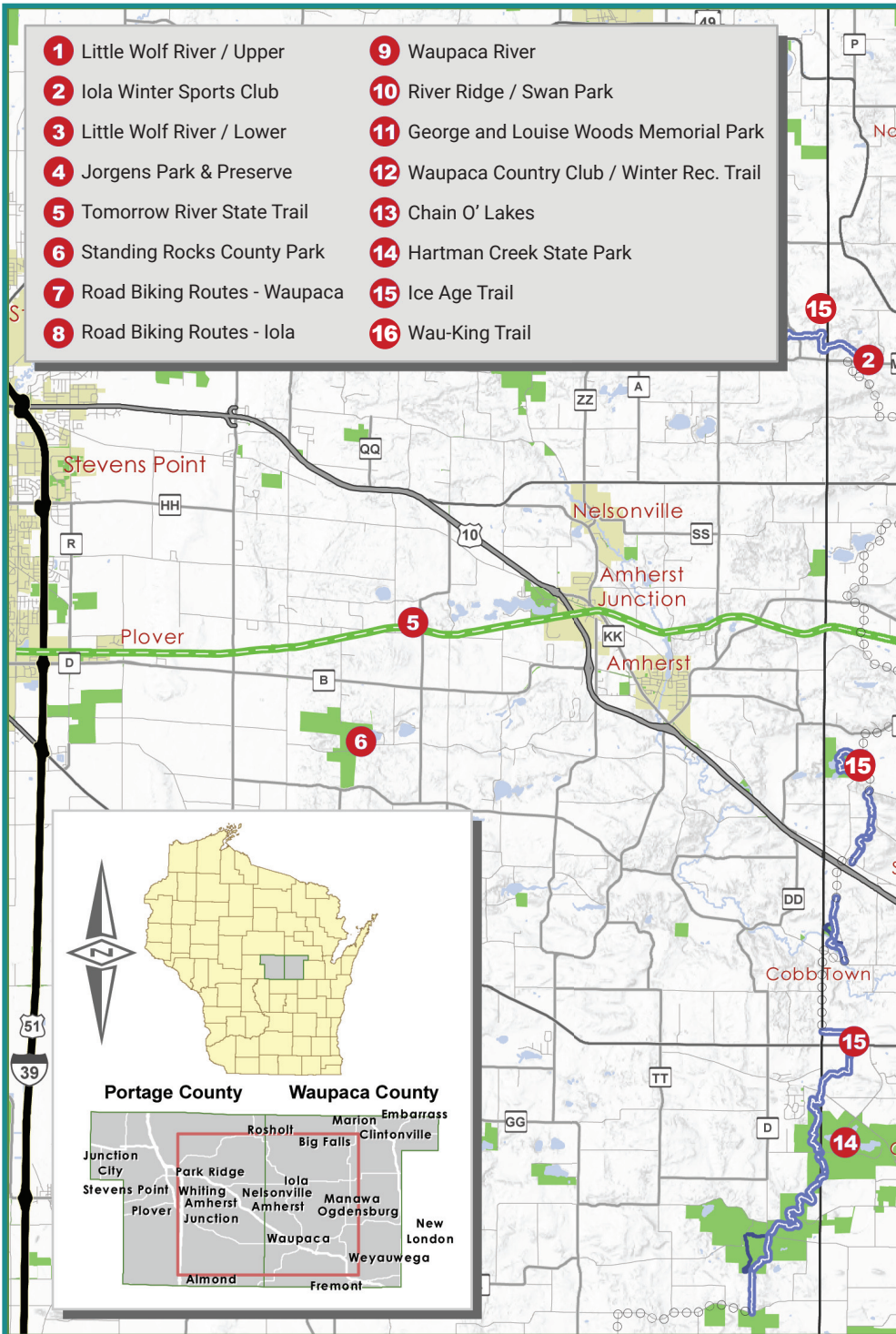
Thank you for visiting the Waupaca area and exploring our ever increasing facilities for Silent Sports! While we have made a great attempt for accuracy within the content of this guide, please note that activities and maps by location may change. Whenever possible, please contact the appropriate website link or phone number for the latest information. **Enjoy!**

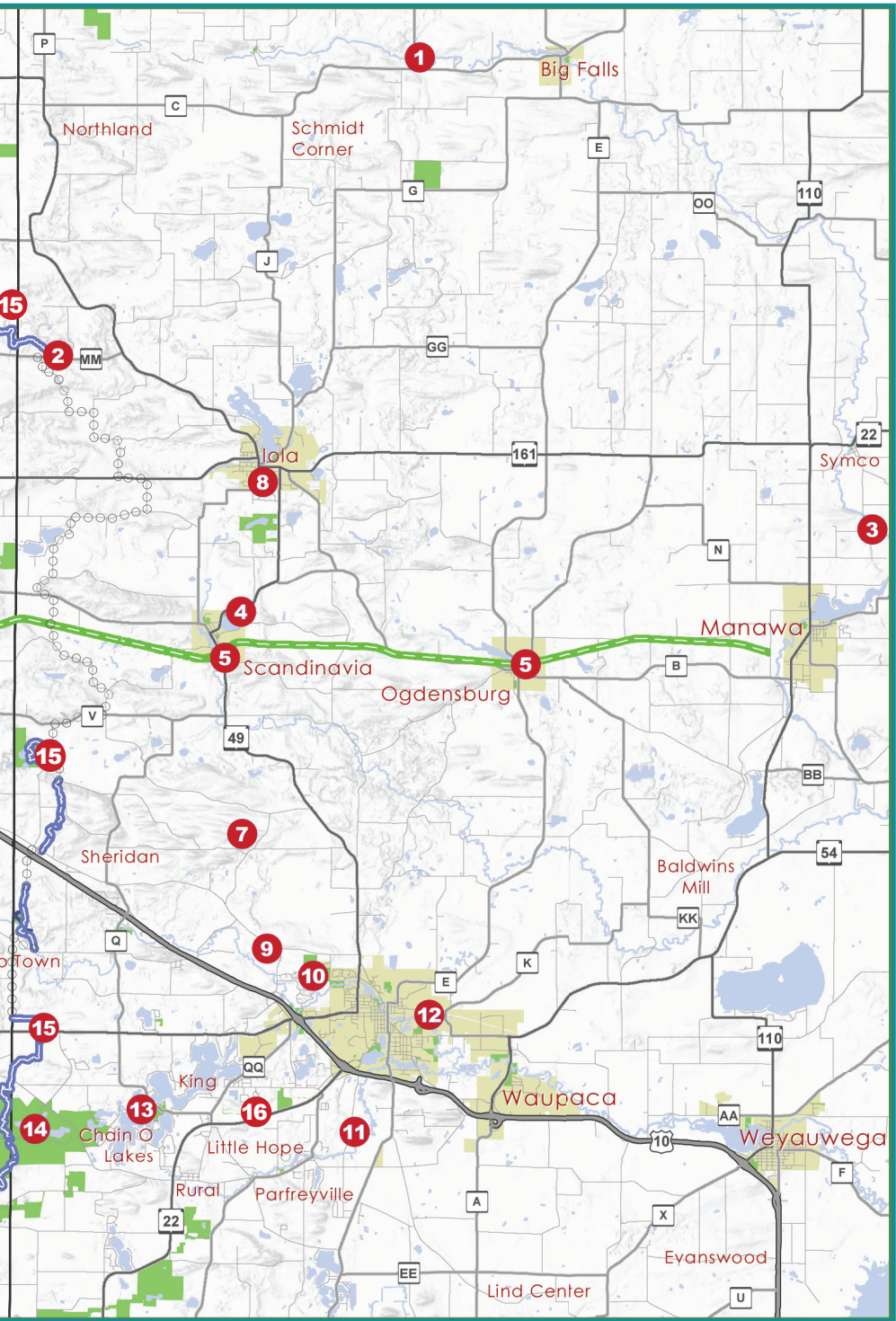


All maps were created by the Waupaca County Land Information Office - updated by Jason McKeefry.

Waupaca Area Silent Sports Guide is produced and funded by the Waupaca Area Convention and Visitor Bureau.

- | | |
|---------------------------------------|--|
| 1 Little Wolf River / Upper | 9 Waupaca River |
| 2 Iola Winter Sports Club | 10 River Ridge / Swan Park |
| 3 Little Wolf River / Lower | 11 George and Louise Woods Memorial Park |
| 4 Jorgens Park & Preserve | 12 Waupaca Country Club / Winter Rec. Trail |
| 5 Tomorrow River State Trail | 13 Chain O' Lakes |
| 6 Standing Rocks County Park | 14 Hartman Creek State Park |
| 7 Road Biking Routes - Waupaca | 15 Ice Age Trail |
| 8 Road Biking Routes - Iola | 16 Wau-King Trail |





CHAIN O' LAKES

13

22 interconnected lakes with crystal clear spring fed waters. The Chain's marl bottom gives many of the lakes a distinctive bluegreen coloration not found in many other bodies of water in Wisconsin. Due to their relatively small size, all but four of the lakes are no wake making them ideal for paddlers. Of particular interest to silent sport enthusiasts are the five lakes known as the "Upper Chain" which stretch to the west of the other lakes. The Upper Chain is rarely frequented by motor boats.

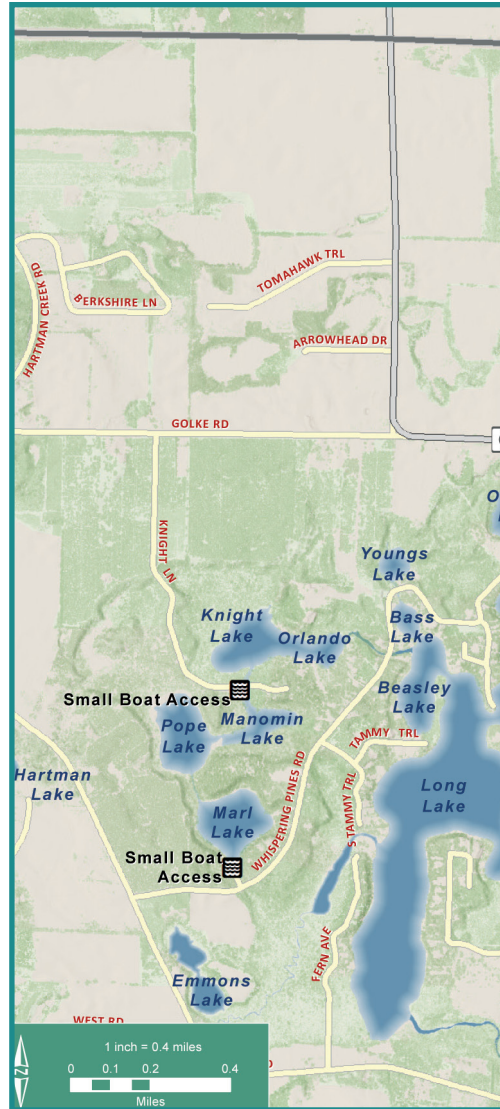
Size & Depth: The lakes on the Chain average 33 acres in size and a depth of 48 feet. The smaller lakes of the Upper Chain average 10 acres in size and a depth of 42 feet.

Access & Parking: Taylor Lake Boat Landing and Grandview Rd Canoe Access are the recommended access points for the main body of the Chain O' Lakes. Taylor Lake has five parking spaces reserved for vehicles without trailers carrying small watercraft. Grandview Rd has parking for about four Vehicles without trailers. Access to the Upper Chain is available at the Knight Lake boat landing on Knight Lane. Parking is ample at Knight Lane.

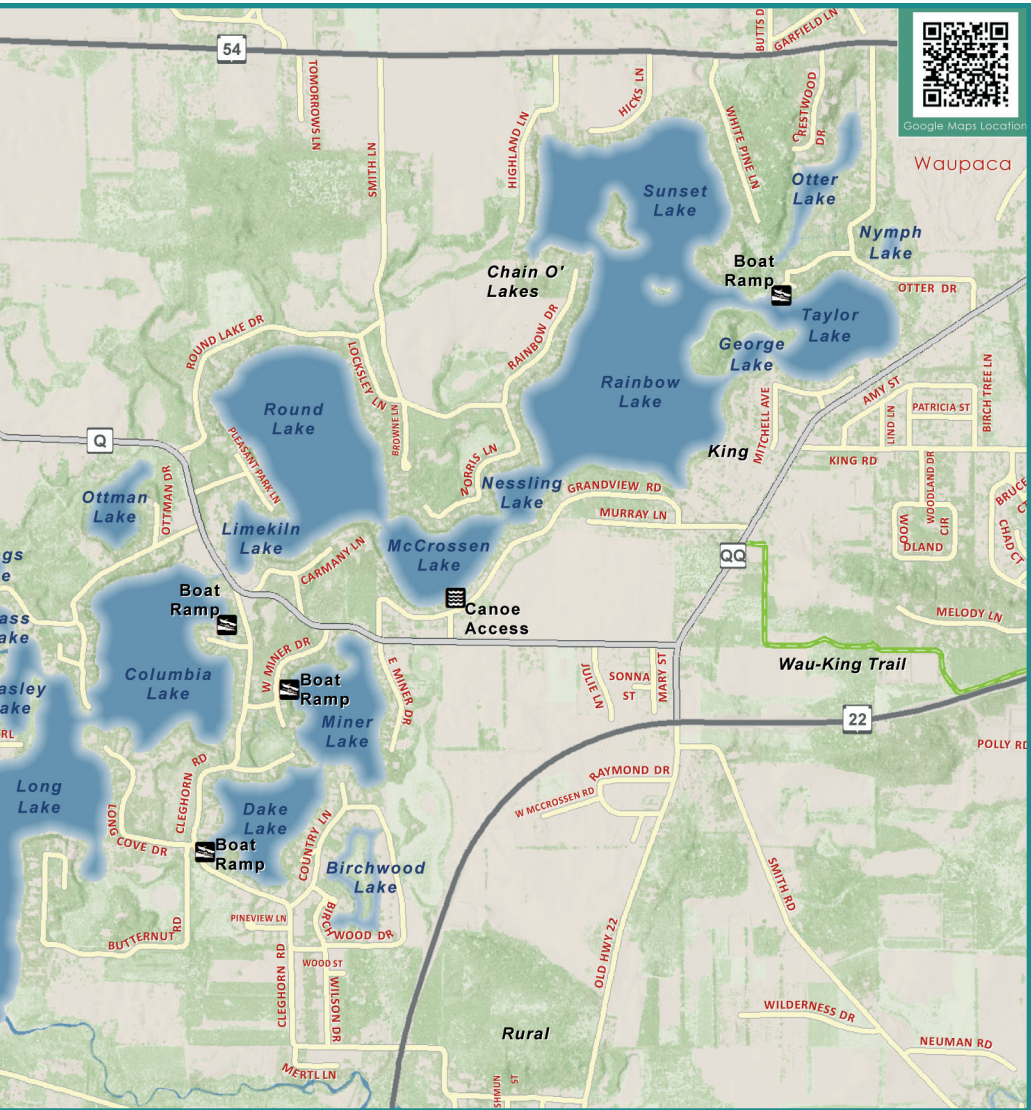
Fee: Self registration, for both daily and season passes, is available on site at most locations.

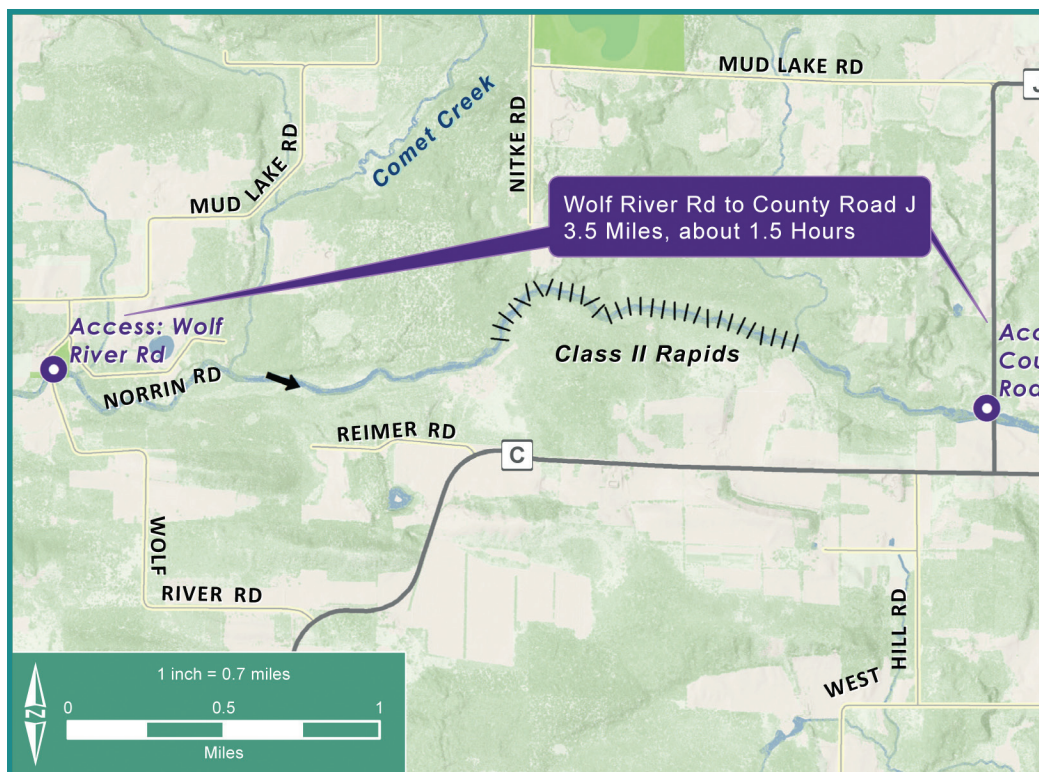
Amenities: The Chain O' Lakes features two restaurants that can be reached by boat as well as a mini-golf course. Dining, shopping, lodging and services can be found in King and Waupaca. There are several marinas on the Chain O' Lakes that offer kayak & stand up paddle board rentals as well as an outfitter that takes users to the Upper Chain.

Visit <https://tinyurl.com/z4cljpk>



PADDLING - FLAT WATER





LITTLE WOLF - UPPER

(Wolf River Road to Big Falls Dam)

1

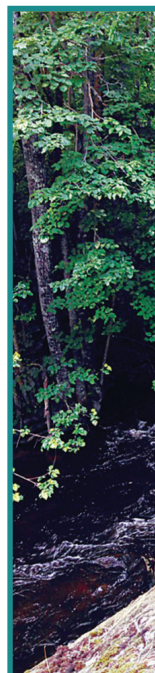
This stretch of river is considered to be some of the most scenic and challenging in the county. The river banks are often rich with cedar forest and ferns. When in season, wild flowers are abundant. The waterway is frequently littered with passable boulder gardens. As with most navigable rivers, the water level will influence river conditions. In the Spring, or after a heavy rain, this section of river will be challenging with its classified rapids.

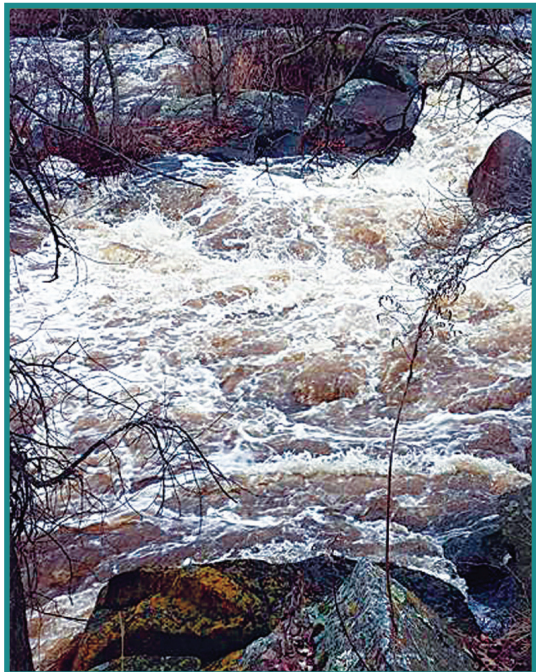
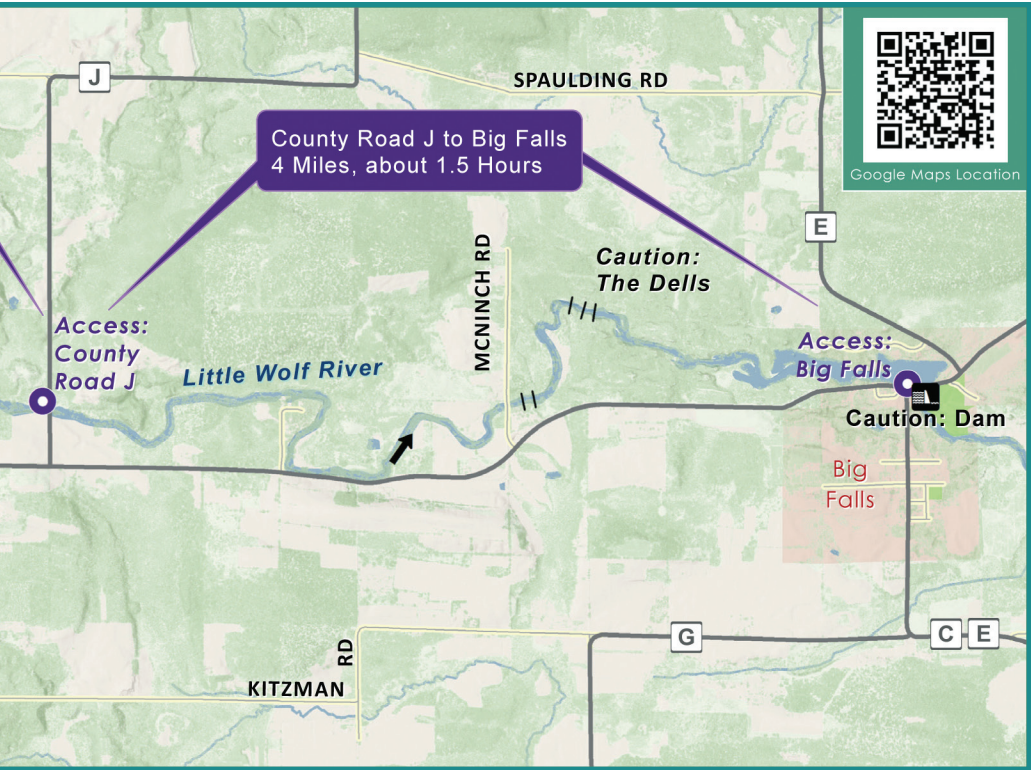
Distance: This segment of river is about seven miles in length. Starting at Wolf River Road, County Road J marks the half way point and ends just North of Big Falls. Make sure you pack a lunch for this three to four hour trip.

Water: Water levels fluctuate greatly, on average, the water depth will be waist deep. Some deeper pools exist near the bends and the Big Falls impoundment.

Difficulty: Intermediate to advanced. **Parking:** All the access points associated with this segment are user friendly with available parking.

Fee: None





LITTLE WOLF RIVER - LOWER 3

This stretch of the river winds through farm lands and wooded areas. Very little development is visible from the water on the first stretch. Blake Creek empties into the Little Wolf between Symco and Manawa.

Distance: Approximately 5 miles (2.25 hours) from Symco to Manawa; Symco to Bridge Rd – 2 miles (45 minutes), Bridge Rd to Manawa – 3 miles (1.5 hours)

Water: The river depth ranges from 1 to 3 feet with deeper pools in bends with a width of 25-30 feet and a millpond at Manawa. A short boulder field is present at the Symco put-in with a handful of well spaced rocks just below this point. The lower section could be paddled upstream (against the current).

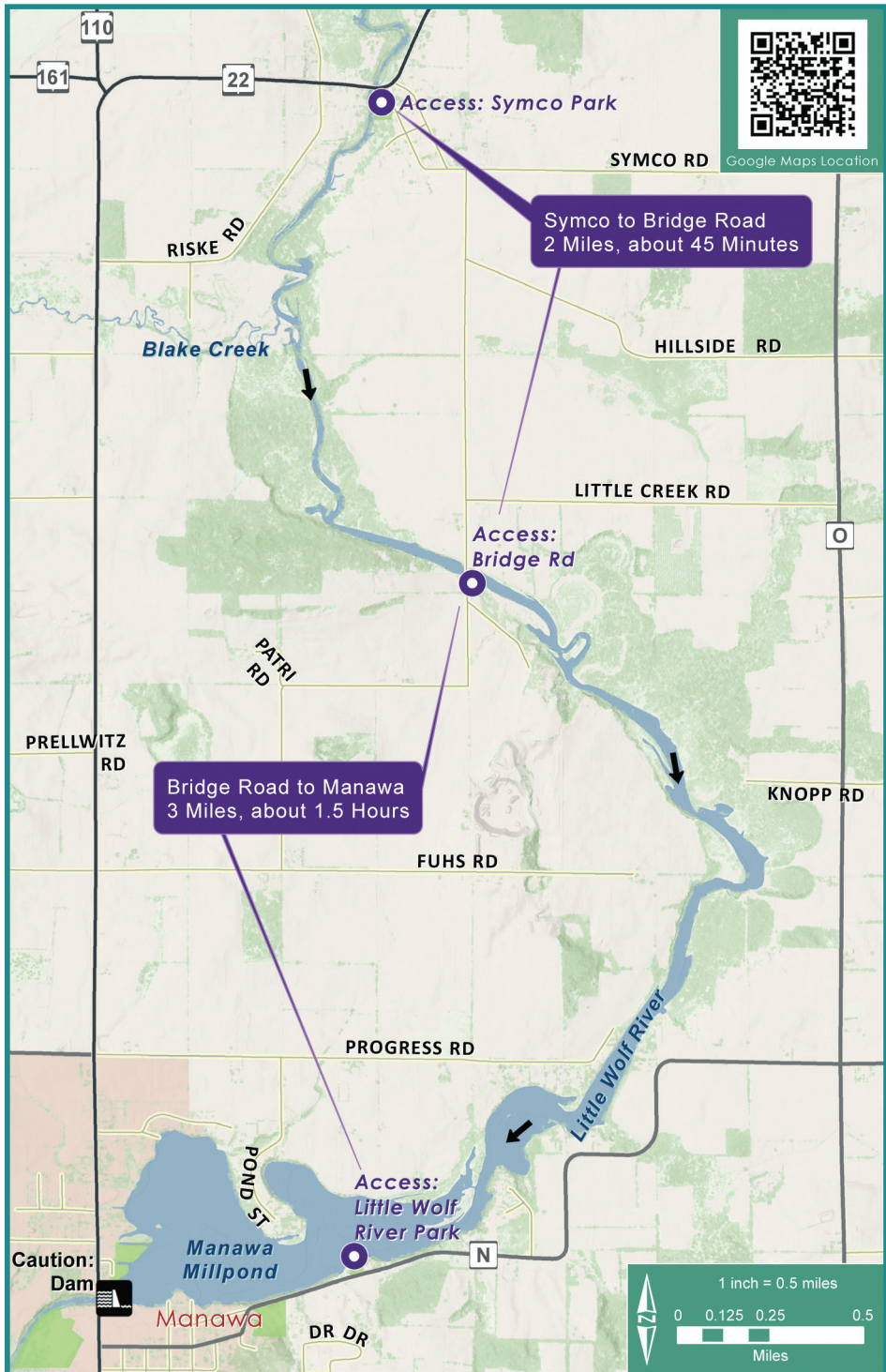
Difficulty: Generally easy with a moderate beginning through a boulder field. Caution should be taken once entering the Mill Pond in Manawa. Paddlers should keep a safe distance from the Dam at the West end in the pond.

Parking & Access: Symco County Park located at the intersection of Symco Road and Hwy. 22. Boat landing south of Symco at Bridge Road outside of Manawa. Boat landing at Little Wolf County Park on Clark Street east of Manawa.

Fee: The access at Little Wolf County Park requires a Waupaca County Launch permit. Self registration, for daily and season passes, is available onsite.

Amenities: General services including dining, restrooms, water and a grocery store can be found in Manawa. Bar and grills are located across the street from the County Park in Symco.





WAUPACA RIVER 9

(Cobbtown Rd. to Brainards Bridge Park)

This is a beautiful, winding stretch of river with an abundance of wildlife including ducks, geese, sand hill cranes, songbirds, deer and various other water animals. A majority of the river winds through wooded areas taking you under several roadways. This is a great stretch of river for those who have some kayaking experience.

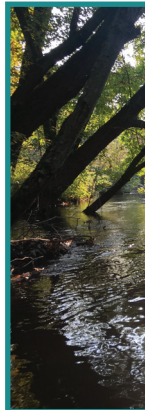
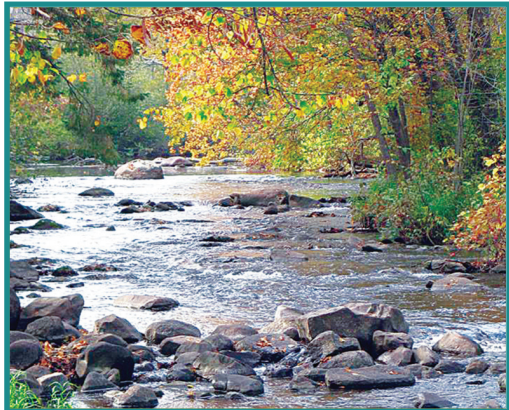
Distance: Approximately 8 miles (roughly 3-3.5 hours) from Cobbtown Rd./Hwy Q. to Brainards Bridge Park in Waupaca.

Water: The river depth ranges from 1-3 feet. Even in dry years, most of this stretch of river stays deep enough to paddle.

Difficulty: A majority of the river is easy to moderate paddling, however, there are several areas where you will encounter fallen trees, rocks and whitewater making it challenging for some people.

Parking and Access: Public parking area on Cobbtown Rd. just off of Hwy Q. (Take Hwy 10 West out of Waupaca to Hwy. Q and turn South.)

Fee: None



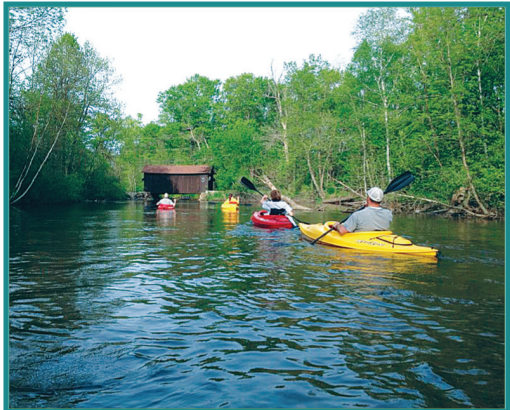
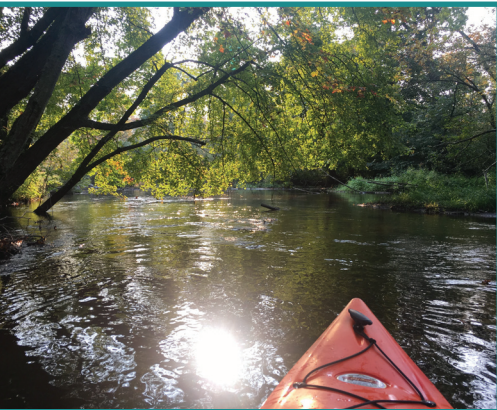
Down Road to Brainards Bridge Park
s, about 3-3.5 Hours



Google Maps Location



PADDLING - MOVING WATER



CRYSTAL RIVER

11

(Rural to Shadow Lake Boat Landing, Waupaca)

This narrow, winding and scenic stretch of river can be enjoyed by those who are adventurous and those who want a relaxing and easy paddle experience.

Distance: This entire stretch of river is approximately 9 miles in length. Rural (Main Street/Cleghorn Road) to Nelson Park (Hwy. K South of Waupaca) is just short of 4 miles. This segment is the faster stretch that contains some mild whitewater sections, bridges, a small lake (Junction Lake) and takes approximately 90 minutes. The second segment from Nelson Park or George and Louise Woods Memorial Park to the boat landing on Shadow Lake in Waupaca is a 5-mile journey through some beautiful country with lots of bends, turns, and wildlife. Watch for the sign directing you to Shadow Lake just after passing under the Hwy. 10 Bridge. Only a few houses border this waterway. It is the perfect option if you are new to kayaking and takes about 2 hours.

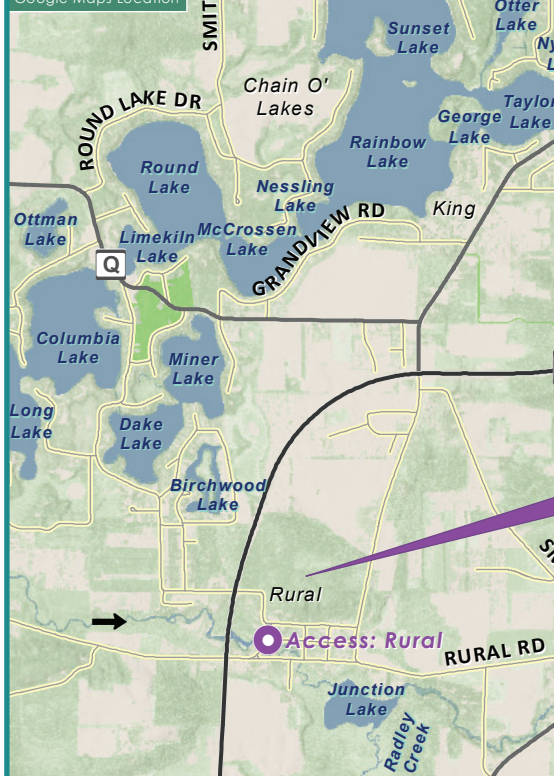
Water: The river depth ranges from 6 inches to 4 feet. (Some deeper areas located in Junction Lake).

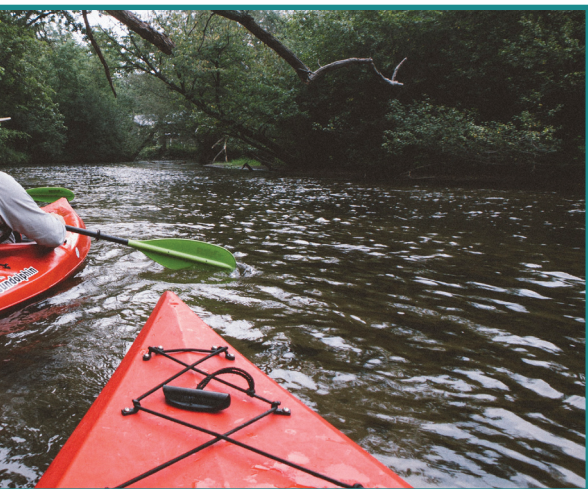
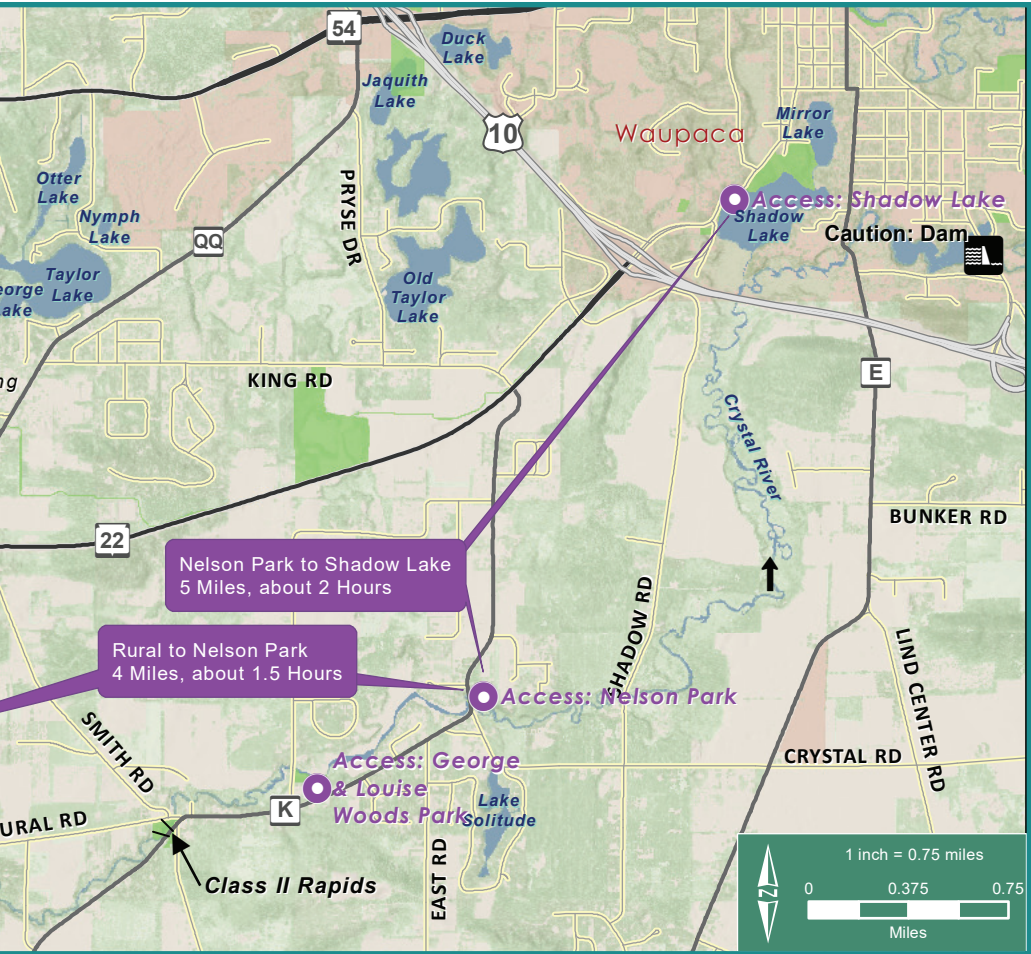
Parking and Access: Some parking is available at the corner of Main Street in Rural and Cleghorn Road. George and Louise Woods Memorial Park offers a large parking area as well as a vault toilet and picnic area. Nelson Park offers more parking opportunity and a vault toilet. Adequate parking and picnic tables are available at Shadow Lake boat landing.

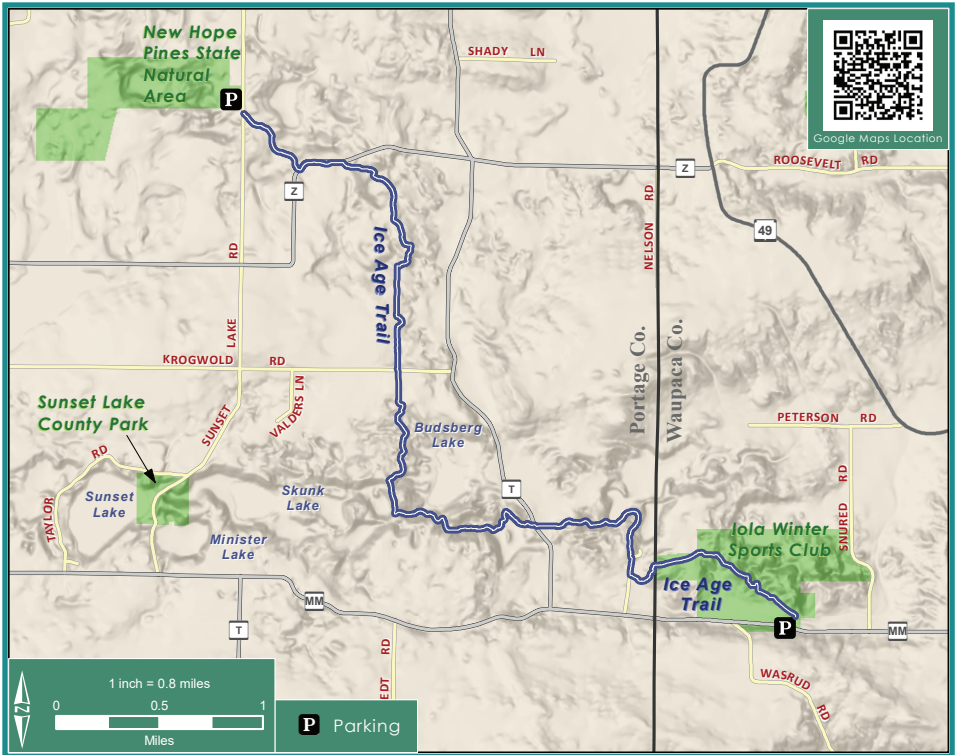
Fee: None



Google Maps Location







ICE AGE TRAIL

15

Distance: 24.2 miles represented. Starting at the southernmost segment and moving North; South of 2nd Ave. is Murry Creek Loop (2.7 miles), Emmons Creek segment (2.6 miles), Hartman Creek segment (4.3 miles), Waupaca River segment (7.25 miles), Skunk & Foster Natural area (4.3 miles), and New Hope - Iola Ski Hill segment (5.6 miles).

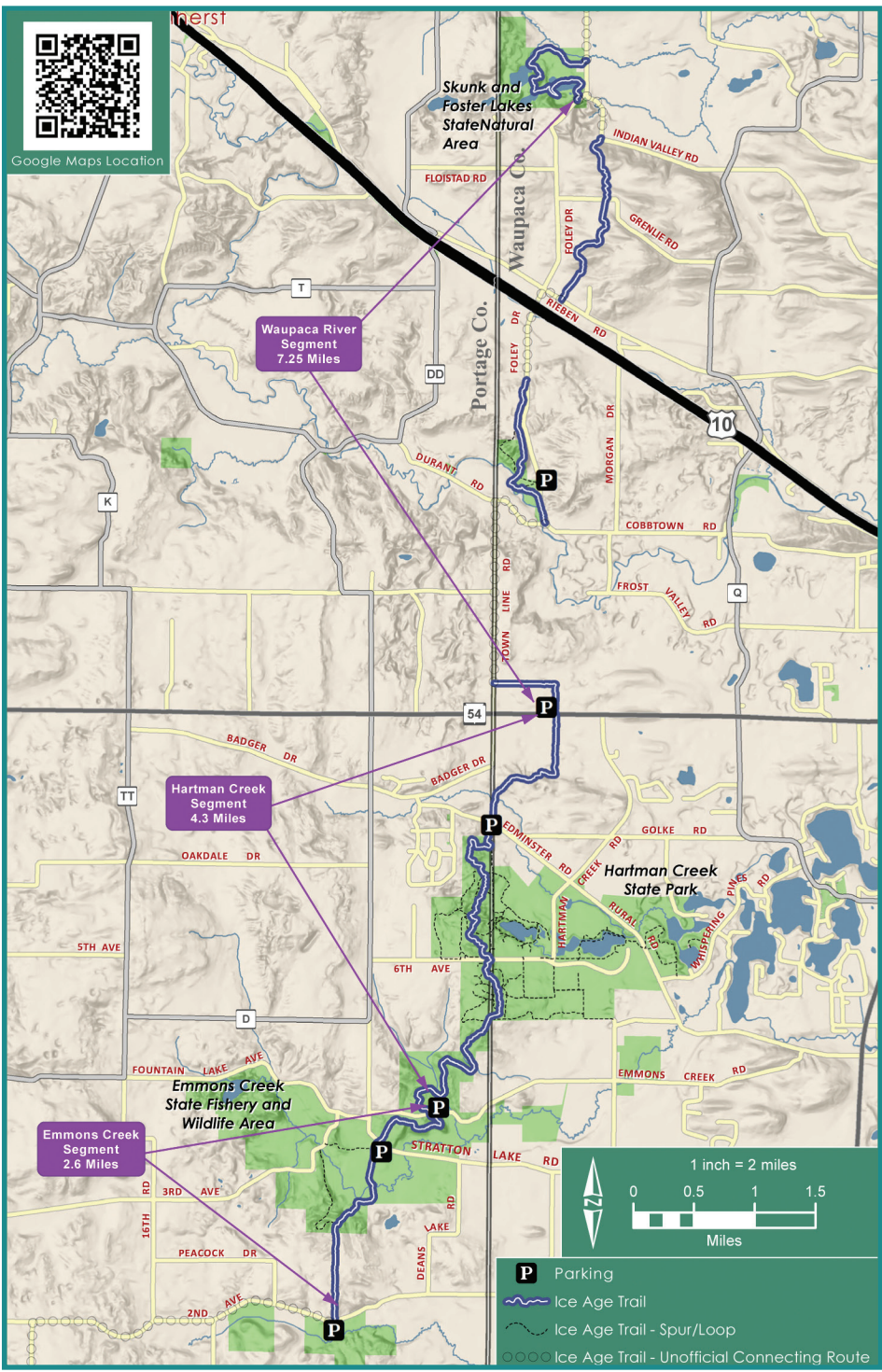


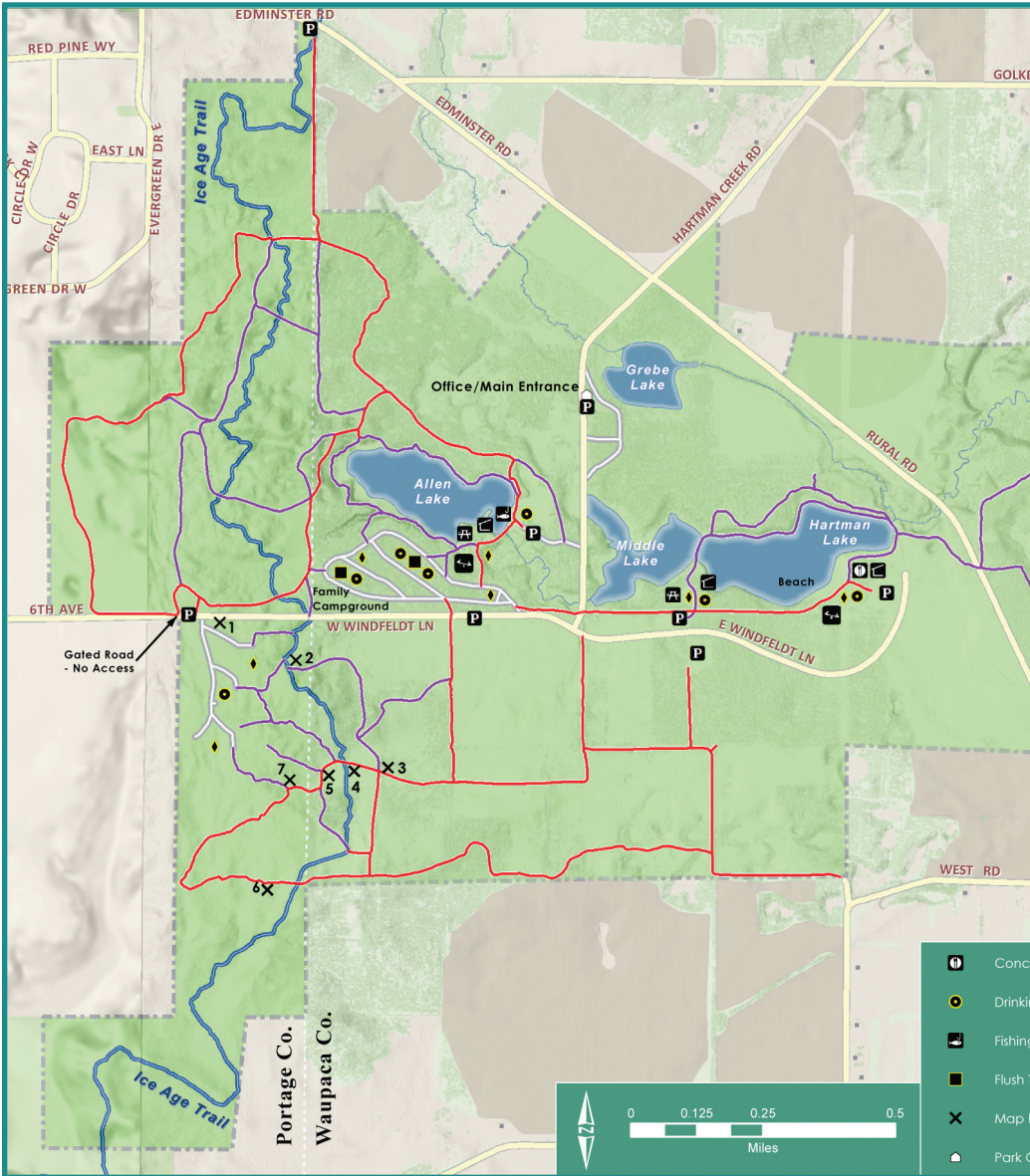
Parking & Access: Starting South at the southernmost segment and moving North; trail access exists at 2nd Ave., Stratton Lake Rd., Emmons Creek Rd., within Hartman Creek State Park, Edminister Rd., Hwy. 54, Foley Rd., Skunk & Foster Lake State Natural Area, and the Iola Winter Sports Club.

Fee: None

Visit www.iceagetrail.org







HARTMAN CREEK STATE PARK 14

Distance: 13 miles

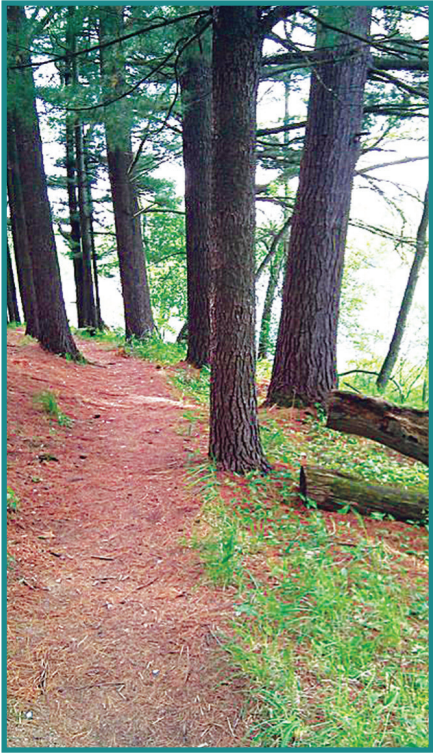
Surface: Smooth dirt or paved trail with moderate elevation changes and varying trail widths.

Difficulty: Easy to Moderate

Parking & Access: Available within Hartman Creek State Park, N2480 Hartman Creek Road, in Waupaca


 Google Maps Location

* Requires state trail pass for persons 16 years of age or older.

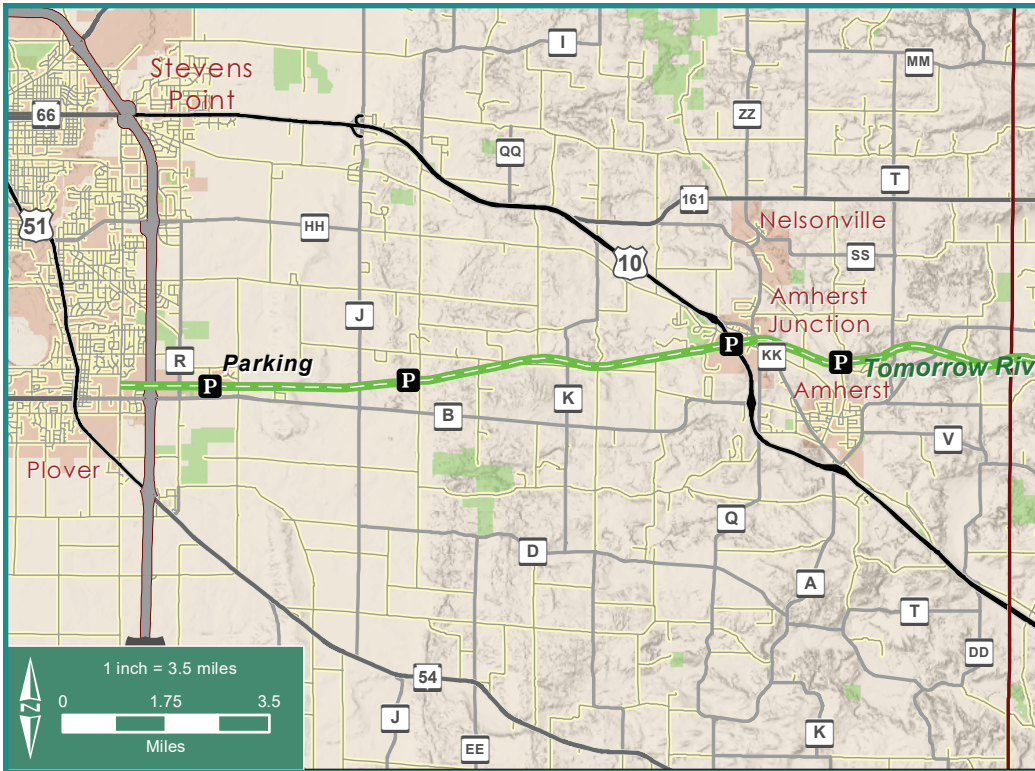


Fees: State Park admission fee is required.

Amenities: Restrooms, water, playground, shelter building, swimming beach, recreational equipment rentals, concessions and camping.

Questions: Contact Hartman Creek State Park at (715)258-2372

Visit <https://tinyurl.com/z6o67dd>

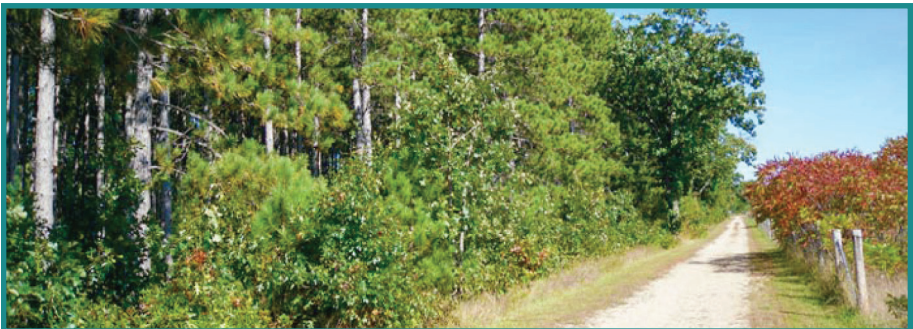


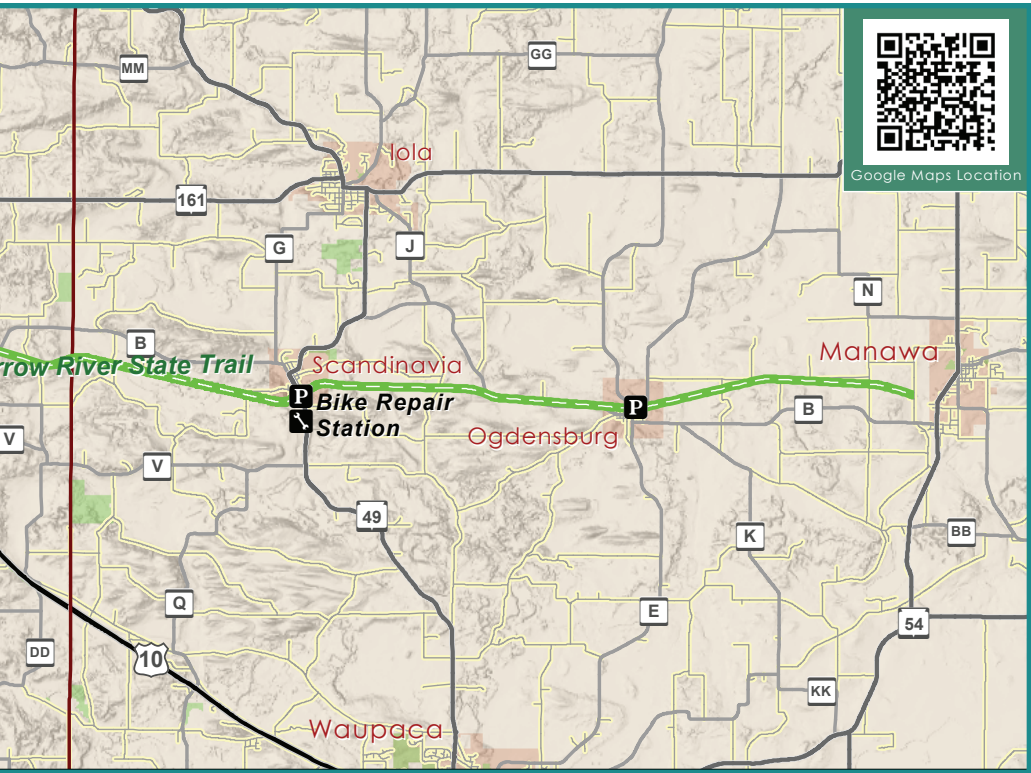
TOMORROW RIVER STATE TRAIL

5

Distance: 30 miles from Plover to Manawa. Segments: Plover to Amherst Junction (11.05 miles), Amherst Junction to Scandinavia (8.78 miles), Scandinavia to Ogdensburg (5.72 miles), Ogdensburg to Manawa (5.05 miles).

Surface: Smooth, crushed gravel with subtle grade changes. An unfinished trail section in Amherst Junction detours on village streets for one mile. The eastern end of the trail ends .5 miles west of Manawa; local roads can be used into the city.





Difficulty: Easy

Parking & Access: Hwy 49 just south of Scandinavia, Cate Park in Amherst, Amherst Junction, Ogdensburg, and Twin Towers Road in Plover.

Fee: No fee is required for hiking.

Amenities: Vibrant local communities offer a variety of options for lodging, dining and shopping along the trail.

Questions: Contact the Waupaca County Parks & Recreation Department at (715)258-6243.

Visit
<https://tinyurl.com/z4cljpk>



RIVER RIDGE TRAIL - SWAN PARK

10

Distance: 2.3 miles

Surface: Gravel & woodchips with minor elevation changes

Difficulty: Easy

Parking & Access: Available at Swan Park (909 Brainard Drive) in Waupaca

Fees: None

Amenities: Restrooms, playground and a shelter.

Questions: Contact the City of Waupaca Parks & Recreation Department at (715)258-4435.

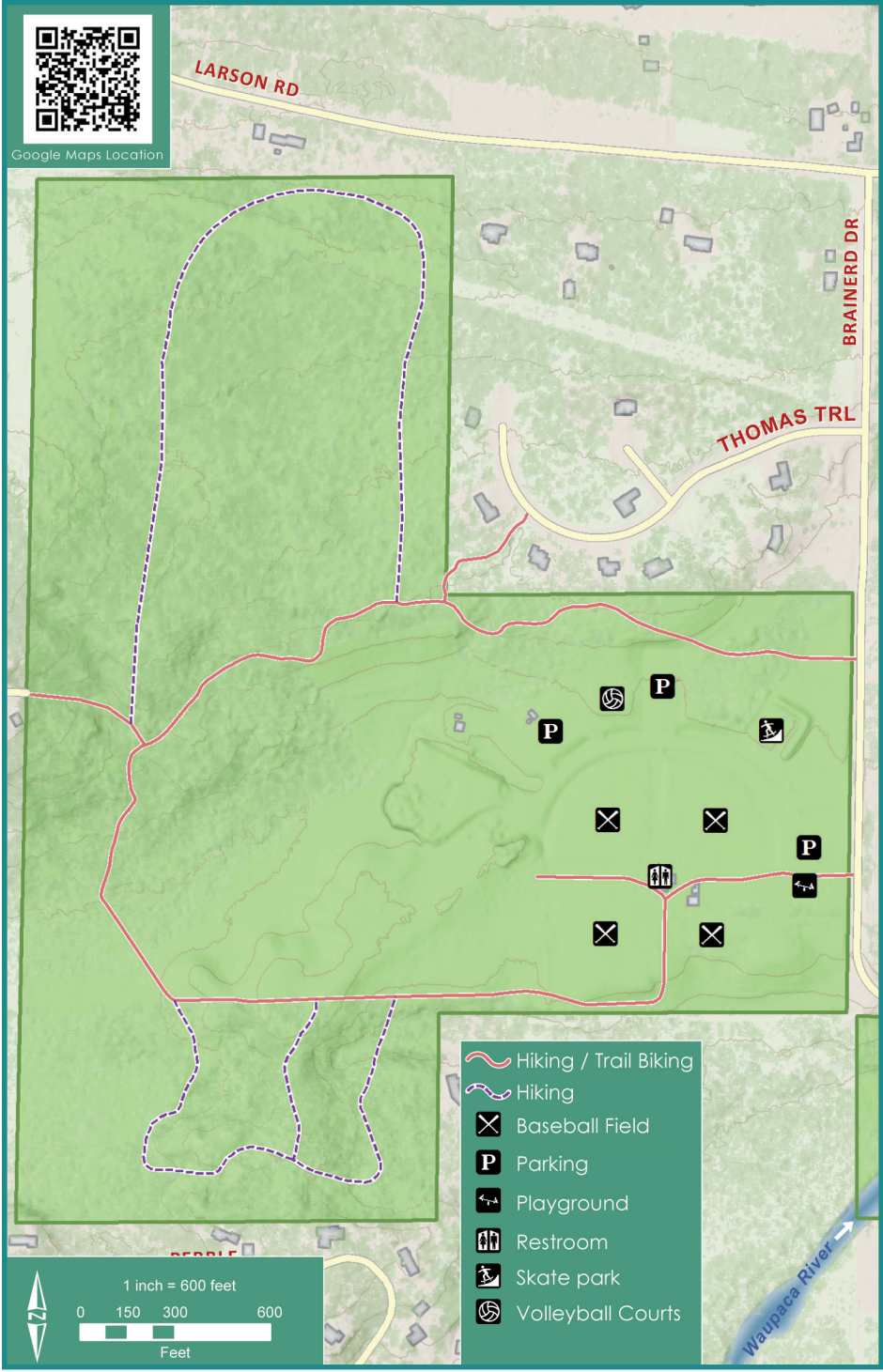
Visit

www.cityofwaupaca.org/parksnrec/





Google Maps Location



- Hiking / Trail Biking
- Hiking
- Baseball Field
- Parking
- Playground
- Restroom
- Skate park
- Volleyball Courts



JORGENS PARK PRESERVE

4

Consisting of about forty acres of rolling fields, meadows, wooded-timber, and wetland areas—this property encompassing the northern and eastern shores of Silver Lake has been developed into Jorgens Park and Preserve and Gunny's Hiking Trail. These facilities include, picnic, hiking, and fishing areas—while preserving the natural beauty and serenity of this property.

Distance: 2 miles of mowed trails throughout the wooded/hilly property – a boardwalk crosses the lower wetland area.

Optional: A 2 mile route has been plotted from the Scandinavia Village Park down Silver Lake Road through Jorgens Park around the lake and crossing Hwy 49 at Silver Lake Boat Landing and Thunderbird Field and following Academy Drive and Pleasant Street back to the Village Park.

Difficulty: General easy to moderate terrain.

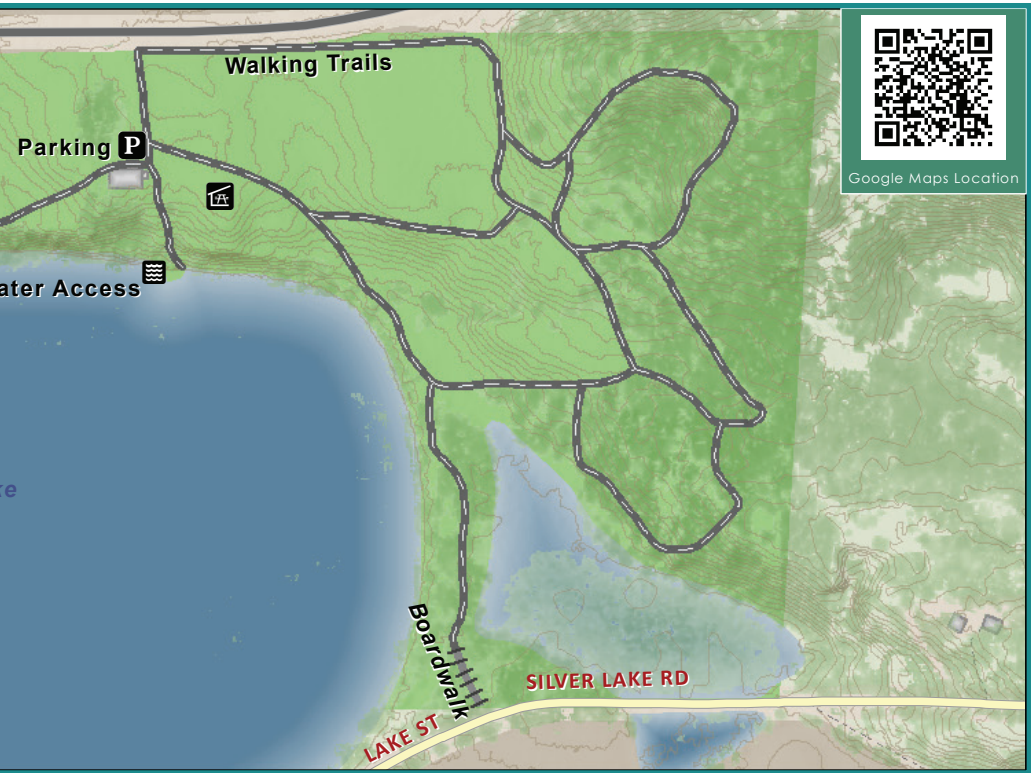
Parking & Access: Parking available next to old barn off from Hwy 49, and at two Silver Lake boat landings.

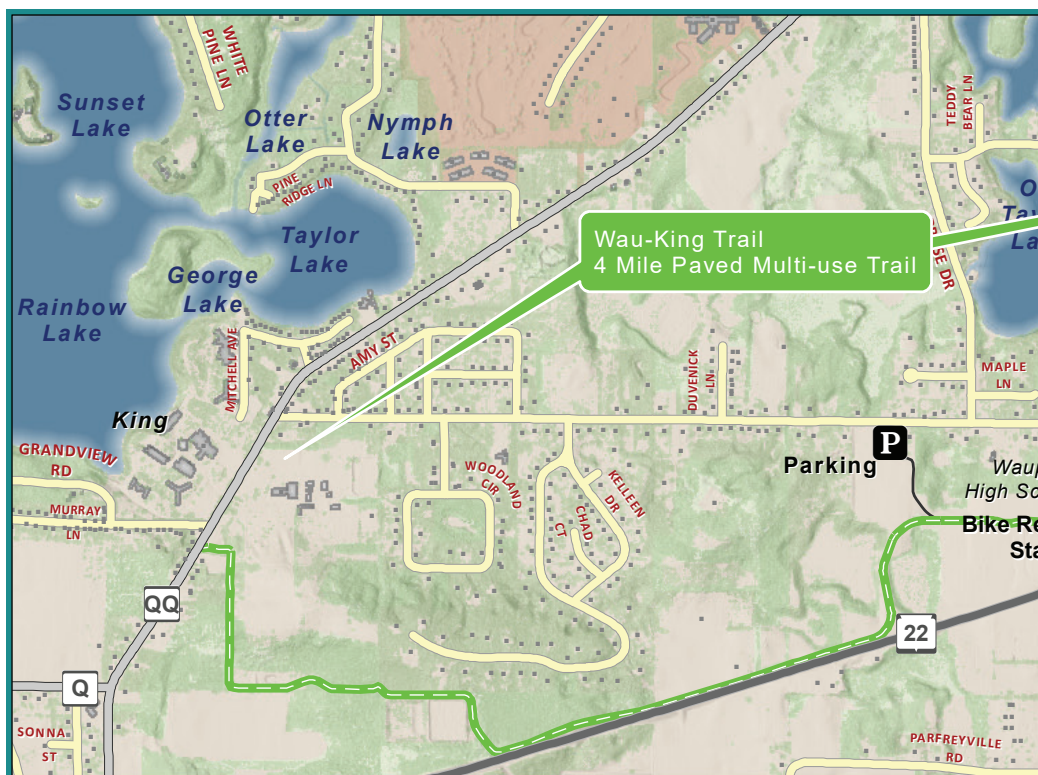
Amenities: Picnic shelter, picnic tables, fishing pier and benches. Portable Toilet available year round. Dining and shopping in Scandinavia.

Water: Silver Lake is 71 acres with a maximum depth of 17 feet.

Fee: None

Visit [Facebook.com/JorgensPark](https://www.facebook.com/JorgensPark)





WAU-KING TRAIL

16

Distance: 4 miles from Waupaca to King

Surface: Paved with elevation changes throughout the trail but generally inclining from Waupaca to King.

Difficulty: Moderate

Parking & Access: Available in the lower parking area of South Park, 921 S. Main Street, in Waupaca.

Fee: None

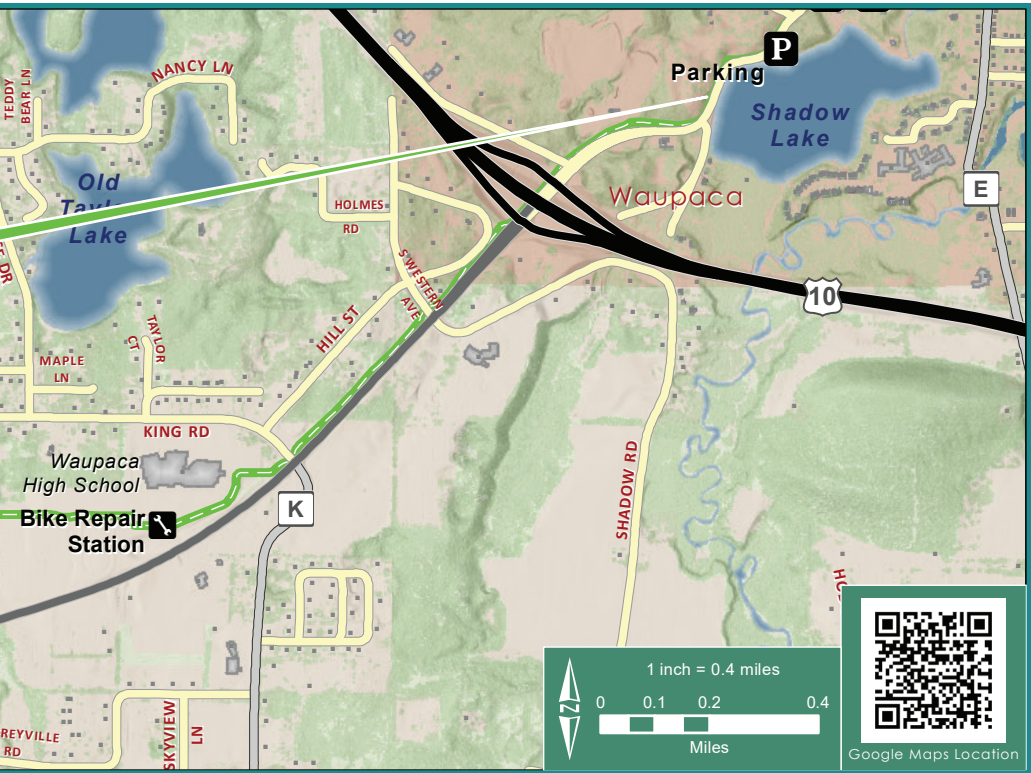
Amenities: The communities of Waupaca and King feature wonderful shops and restaurants. Visitors have a variety of experiences to explore from boutique clothing and bicycle repair, to hand crafted cuisine and beverages. Users will also find South Park with its play area, beach, fishing pier, and restrooms on the eastern end of the trail.

Questions: Contact the Waupaca County Parks & Recreation Department at (715)258-6243.

Visit <https://tinyurl.com/z4cljpk>

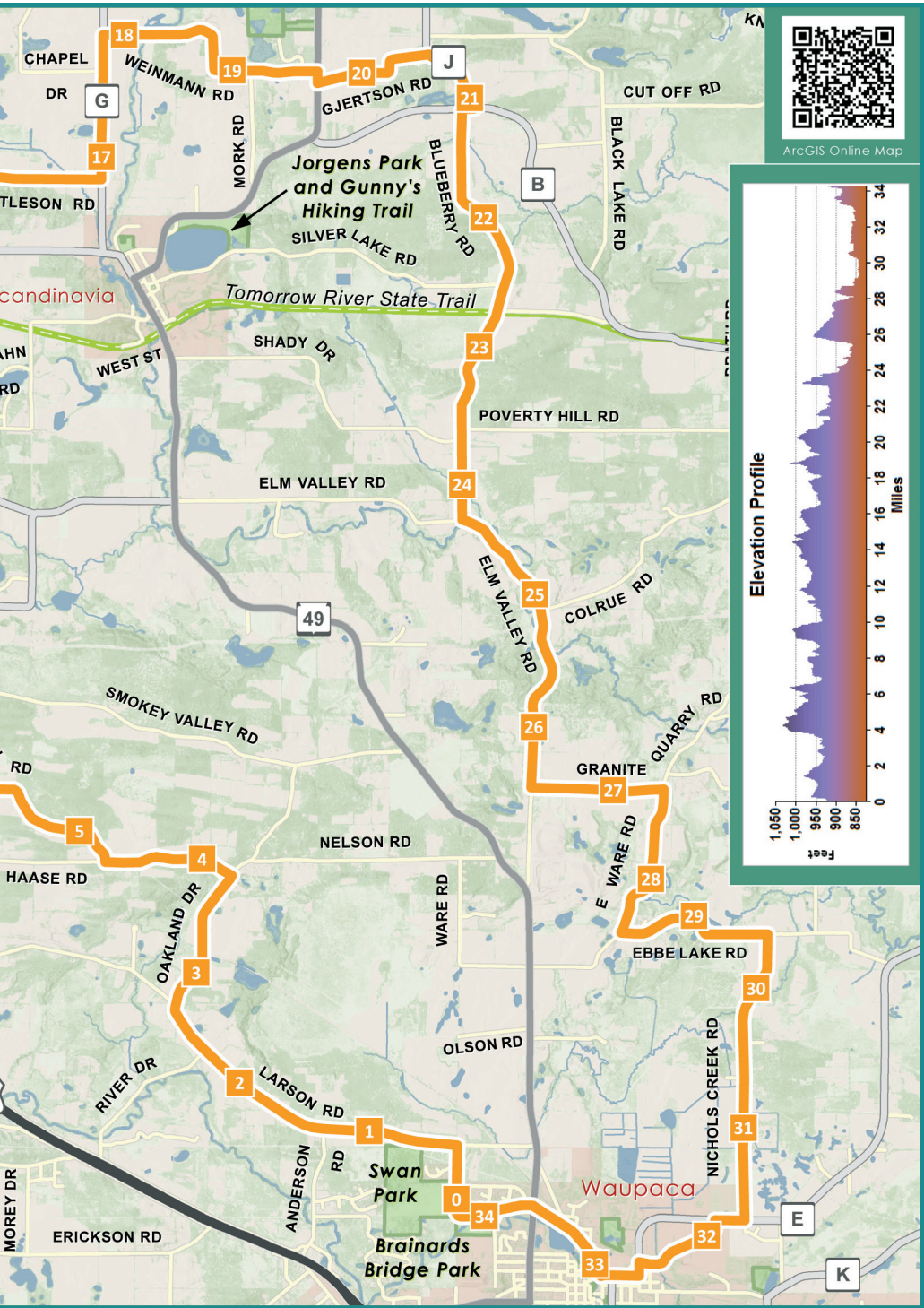
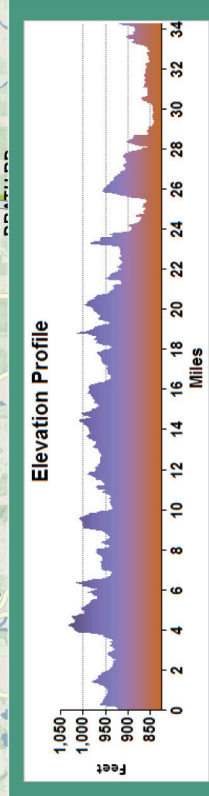


HIKING





ArcGIS Online Map



NORTHWEST PASSAGE 7

Distance: 22 miles from Waupaca, travelling west through King and the Chain O' Lakes then looping north before returning to Waupaca.

Surface: Town roads and paved recreation trail with moderate elevation changes throughout the ride.

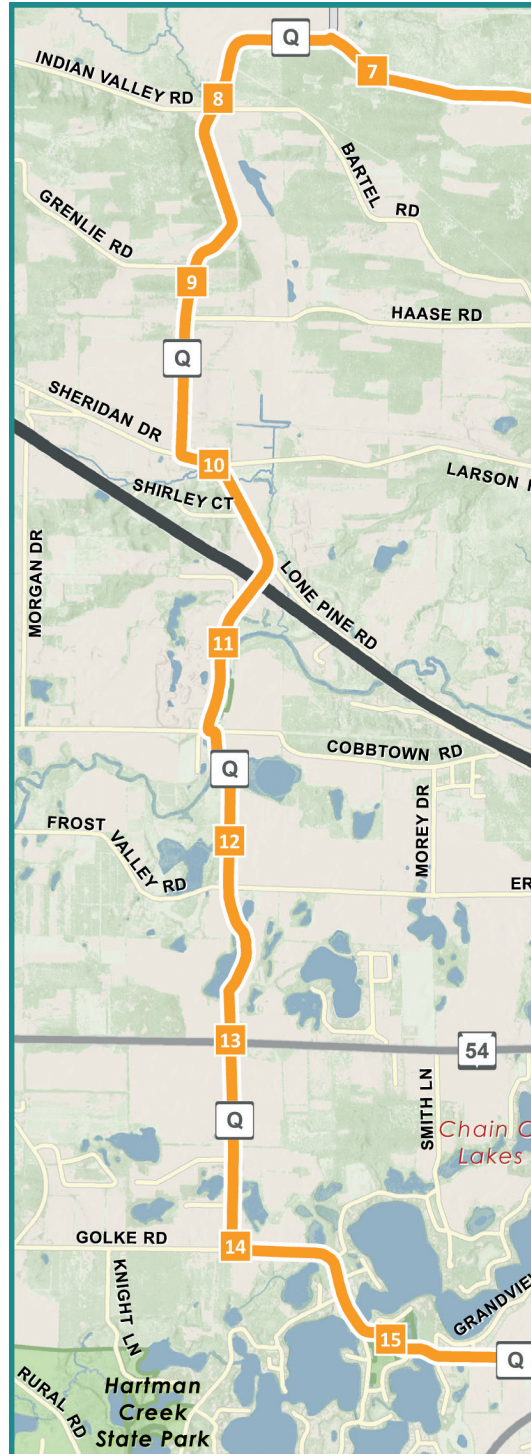
Difficulty: Moderate. Caution: The entire route is on public roadways open to shared bicycle/motor vehicle use.

Parking & Access: Available at Brainards Bridge Park, 711 Bailey Street, or Swan Park, 909 Brainard Drive, in Waupaca.

Fee: None

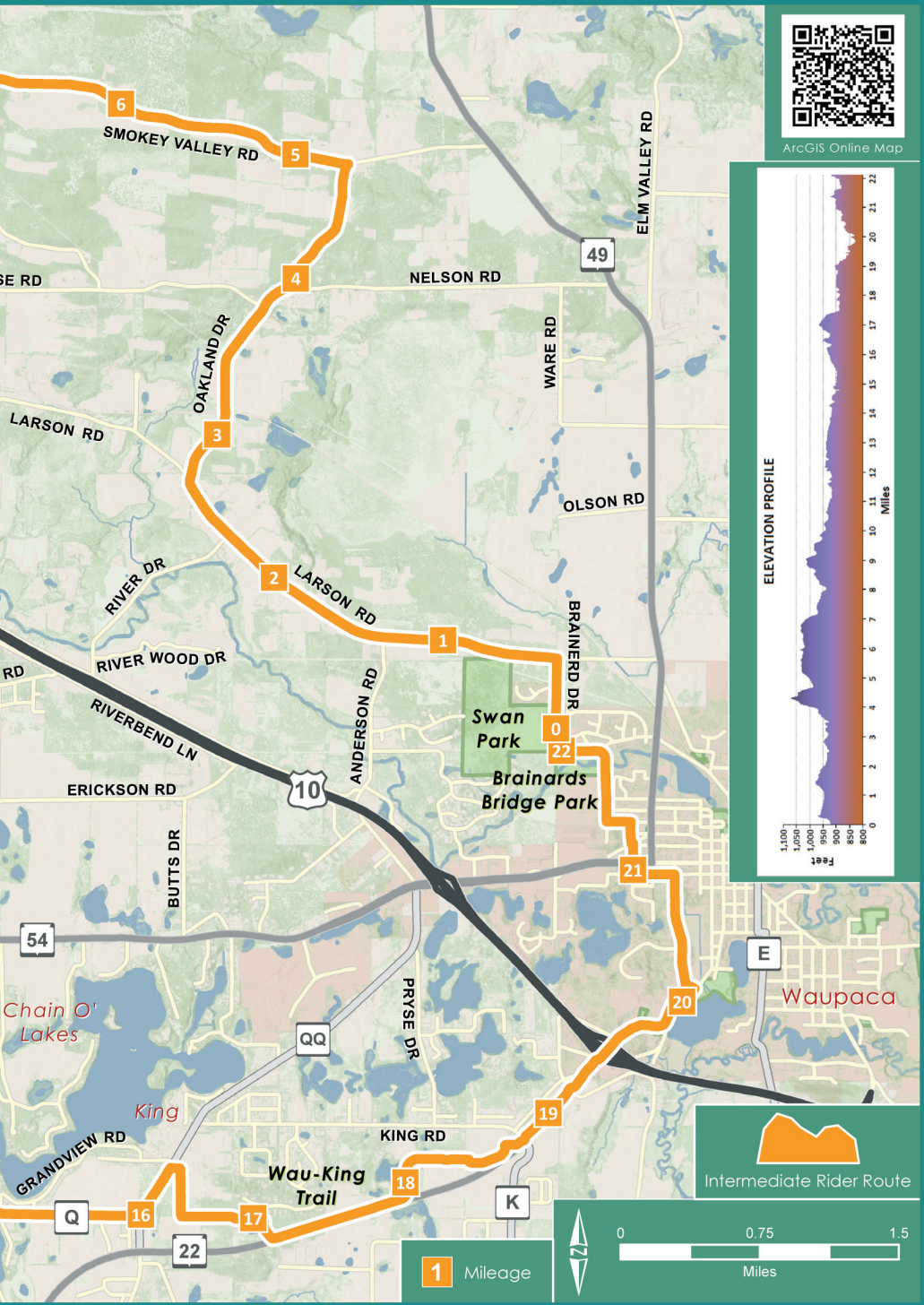
Amenities: Brainards Bridge and Swan Park have restroom facilities, shelter buildings and playgrounds. General services including restrooms, water, dining and shopping can be found while riding through the Chain O' Lakes, King and Waupaca. A four mile segment follows the paved off-highway Wau-King Trail.

Questions: Contact the Waupaca Area Convention & Visitor Bureau at (715)258-7343.





ArcGIS Online Map



BIKE IOLA!

8

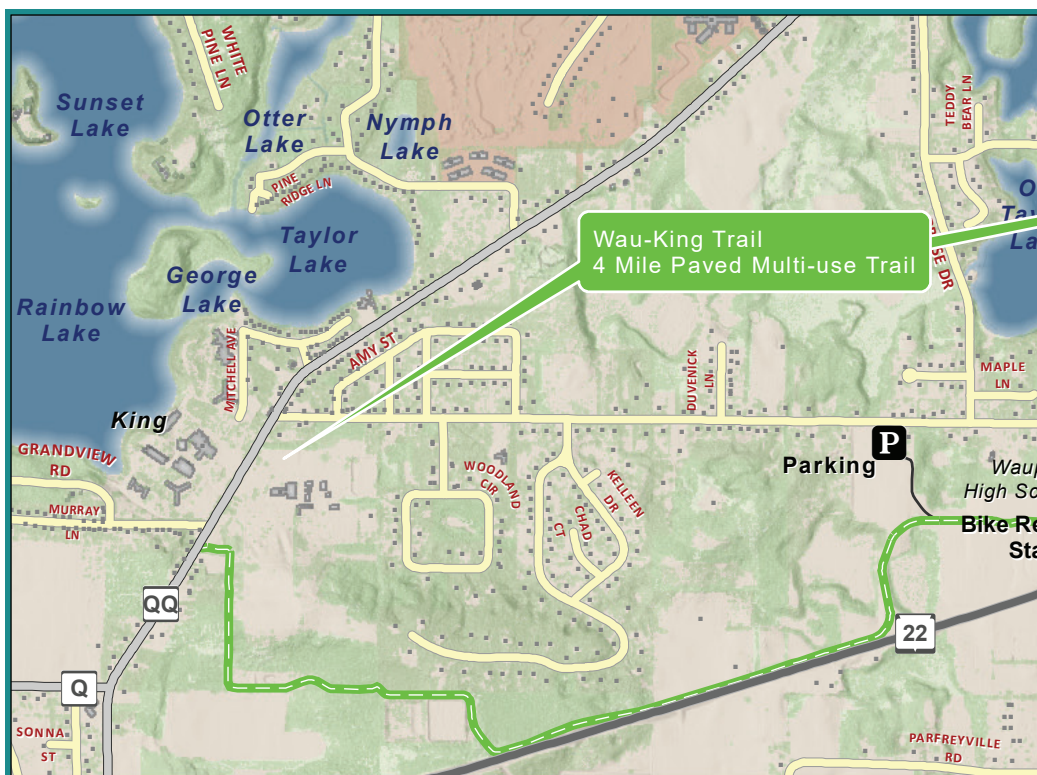
Explore the great backroads around Iola and Scandinavia every Monday and Wednesday nights from May through August. The rides start at the carving of Vidar Of Iola on State Street at 6:00 p.m. sharp. Ride lengths vary, but usually are from 15-25 miles, with the pace ranging from 14 to 20 mph. Distance and speed on any given ride night is dictated by the level of the bikers who show up, weather, and sunset time. The rides are not races. The group practices a “no drop” policy, so no riders will be left to ride alone. All riders must wear biking helmets.

Fees: None required.

Occasional Saturday and Sunday rides in the area also take place as part of the Heartland Bike Club’s summer and fall schedule, which can be viewed at www.heartlandclub.org. If you want a guide for your local ride and/or routes, contact Greg Loescher at onthelake2@tds.net, or visit Bike Iola! on Facebook.







WAU-KING TRAIL

Distance: 4 miles from Waupaca to King

16

Surface: Paved with elevation changes throughout the trail but generally inclining from Waupaca to King.

Difficulty: Moderate

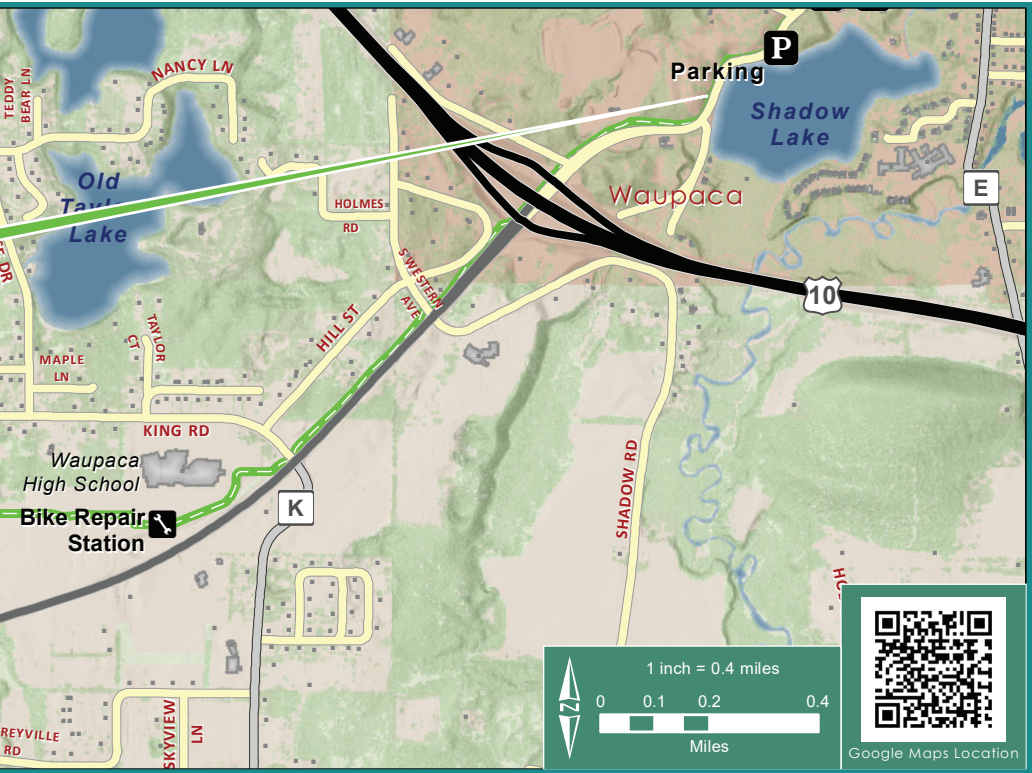
Parking & Access: Available in the lower parking area of South Park, 921 S. Main Street, in Waupaca.

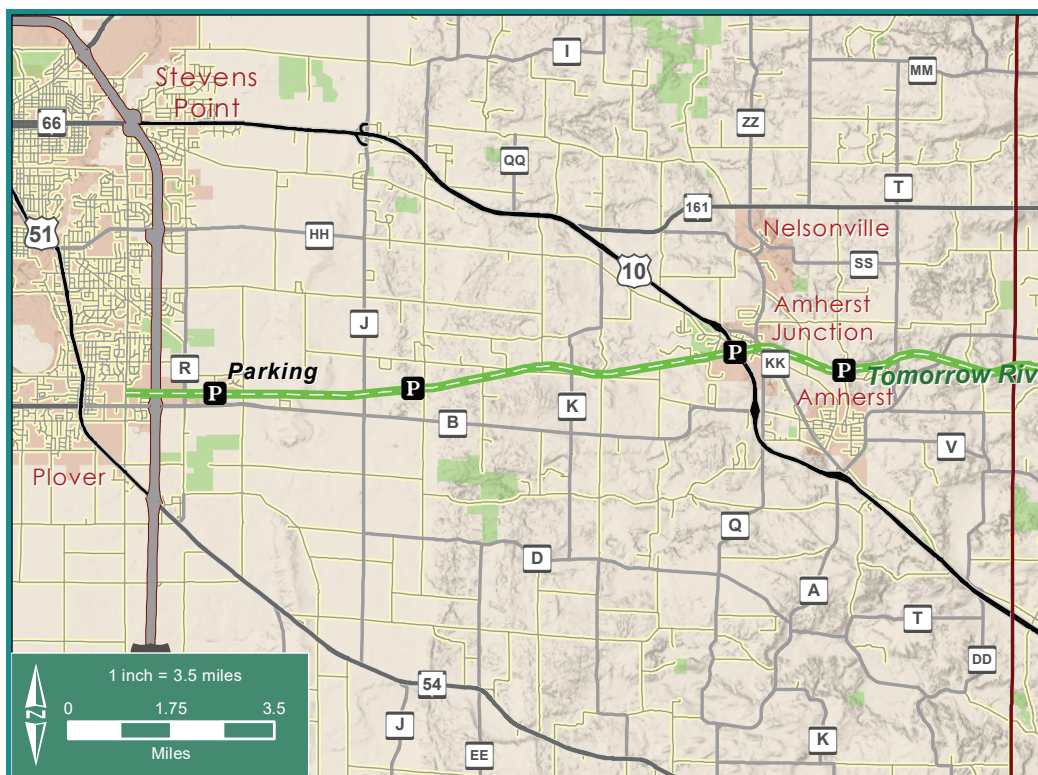
Fee: None

Amenities: The eastern end of the trail is South Park with shelter buildings, restrooms, playground, beach and a fishing pier. The western end of the trail is home to the Wisconsin Veterans Home at King. There are shops, restaurants, coffee shops, bars and other attractions. Most of the trail runs parallel along Hwy 22 with the western segment turning away from the highway and passing through a wooded area. Questions: Contact the Waupaca County Parks & Recreation Department at (715)258-6243.

Visit <https://tinyurl.com/z4cljpk>







TOMORROW RIVER STATE TRAIL

5

Distance: 30 miles from Plover to Manawa. Segments: Plover to Amherst Junction (11.05 miles), Amherst Junction to Scandinavia (8.78 miles), Scandinavia to Ogdensburg (5.72 miles), Ogdensburg to Manawa (5.05 miles).

Surface: Smooth, crushed gravel with subtle grade changes. An unfinished trail section in Amherst Junction detours on village streets for one mile. The eastern end of the trail ends .5 miles west of Manawa; local roads can be used into the city.

Difficulty: Easy

Parking & Access: Hwy 49 just south of Scandinavia, Cate Park in Amherst, Amherst Junction, Ogdensburg, and Twin Towers Road in Plover.

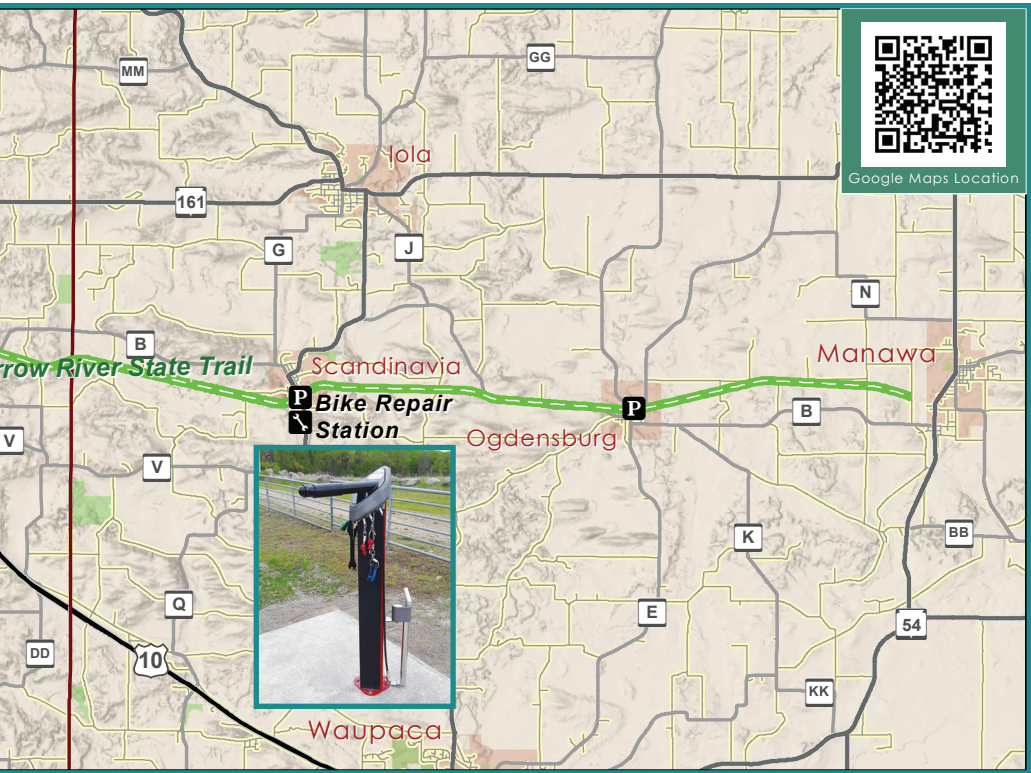
Fee: Waupaca County - No fee is required in Waupaca County, a daily or annual state trail pass is required in Portage County.

Amenities: Vibrant local communities offer a variety of options for lodging, dining and shopping along the trail. Bike Repair Station at Scandinavia.

Questions: Contact the Waupaca County Parks & Recreation Department at (715)258-6243.

Visit <https://tinyurl.com/z4cljpk>





HARTMAN CREEK STATE PARK

Distance: About 7 miles.

14

Surface: These trails are mainly dirt service roads that are approximately 12' in width. Rocks and roots are not uncommon when riding these trails. Most mountain bikers who come to Hartman Creek overlook these trails. Truth be told, the rolling terrain will pleasantly surprise and challenge you!

Difficulty: Moderate.

Parking & Access:

Available within Hartman Creek State Park, N2480 Hartman Creek Road, Waupaca.

Fees: A State Park Admission and State Trail Pass are required.

Amenities: Restrooms, water, bike repair station, playground, swimming beach, recreational equipment rentals, concessions, and camping.

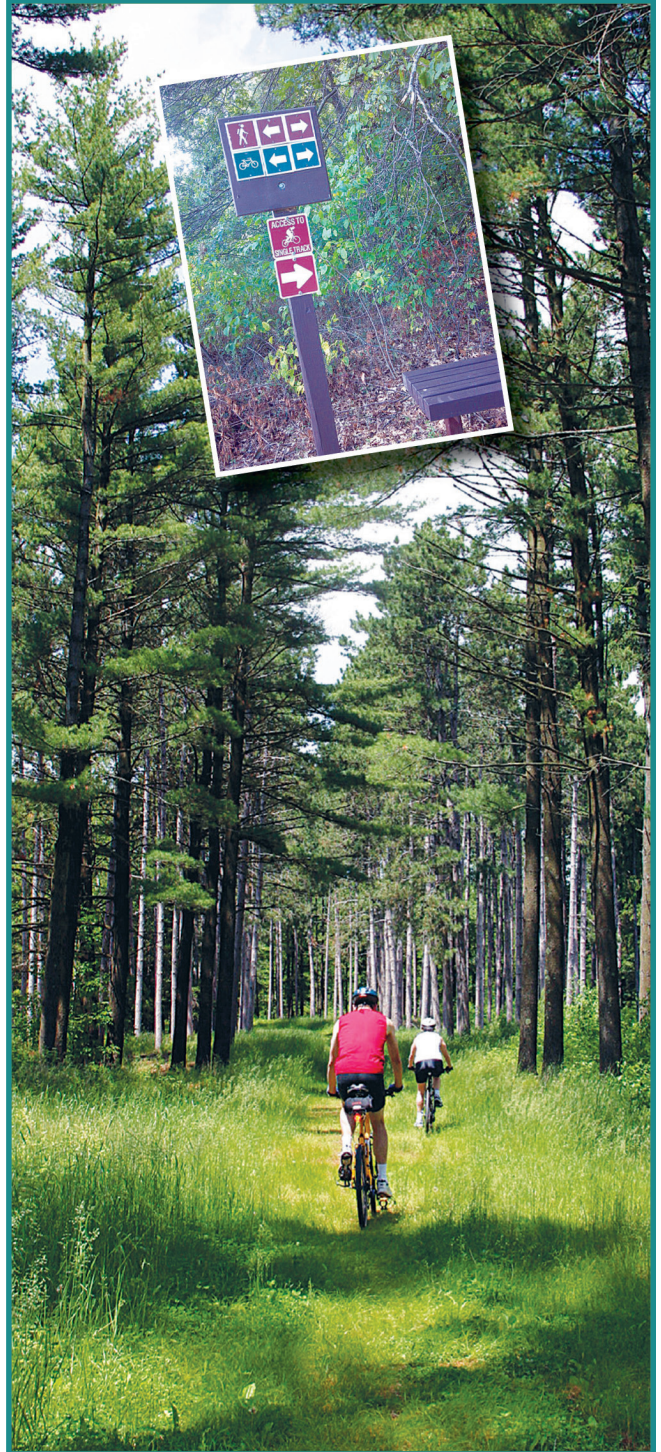
Volunteer

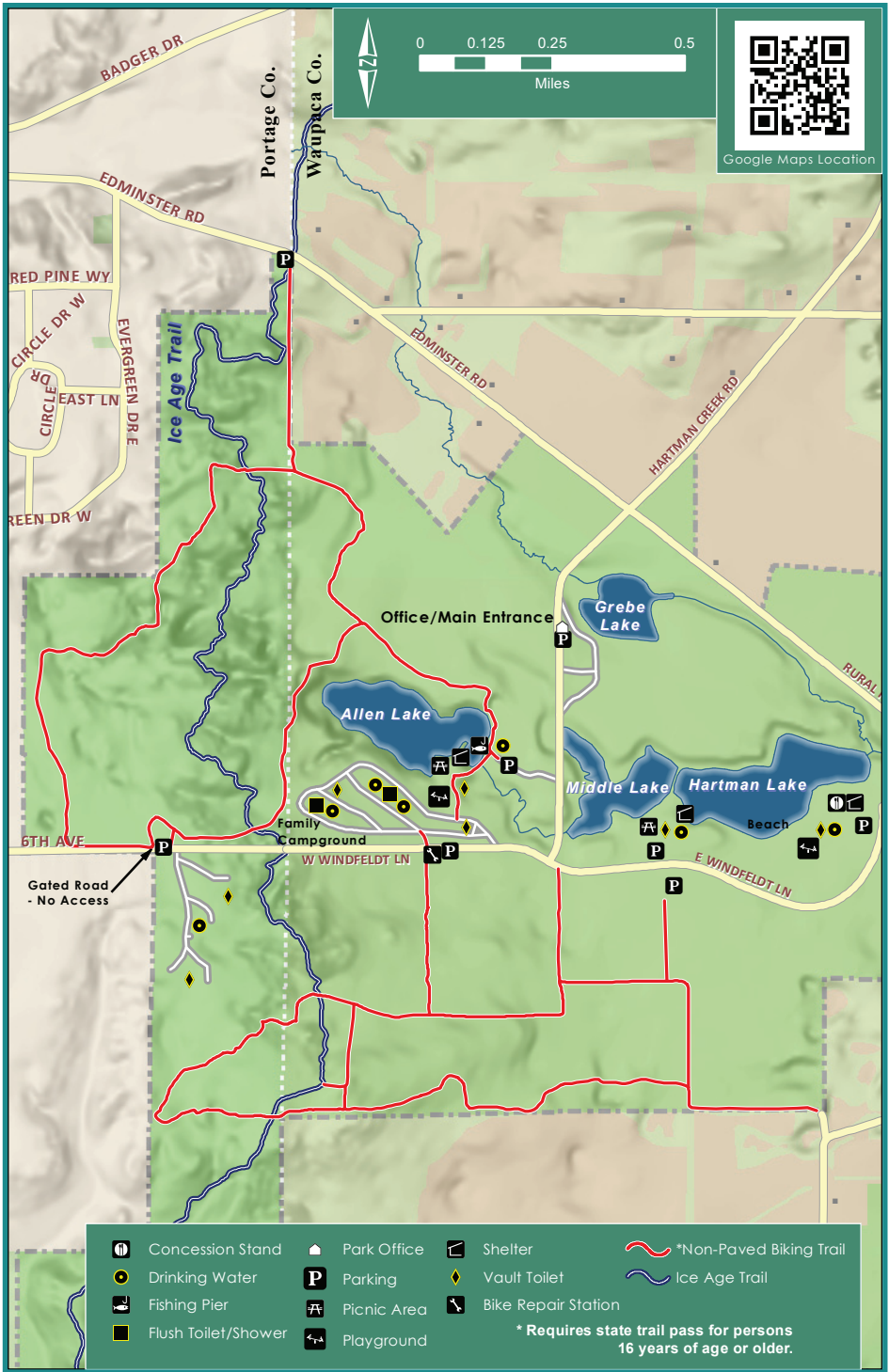
Opportunities:

Cronies Trail Crew on Facebook.com

Questions: Contact Hartman Creek State Park at (715)258-2372.

Visit <https://tinyurl.com/z6o67dd>





BIKING - NON-PAVED

HARTMAN CREEK STATE PARK 14

Distance: 8.6 miles in total; Green Trail – 3.4 miles, Blue Trail – 3.3 miles, Black Trail – 1.9 miles

Surface: Dirt with obstacles such as rocks, roots and logs.

Difficulty: The Green trail is easy with smooth tread, few obstacles and very little elevation change. The Blue trail is of moderate difficulty having more rocks and roots making the tread less smooth and there are several obstacles and elevations changes. The Black trail is the most difficult with a rough tread containing many rocks and roots; difficult obstacles including log piles, tight spots through trees, an elevated board walk (Dragon's Tail), and several elevation changes.

Parking & Access: Available within Hartman Creek State Park, N2480 Hartman Creek Road, in Waupaca

Fees: A State Park admission fee and State Trail Pass are required.

Amenities: Restrooms, water, bike repair station, playground, shelter building, swimming beach, recreational equipment rentals, concessions and camping.

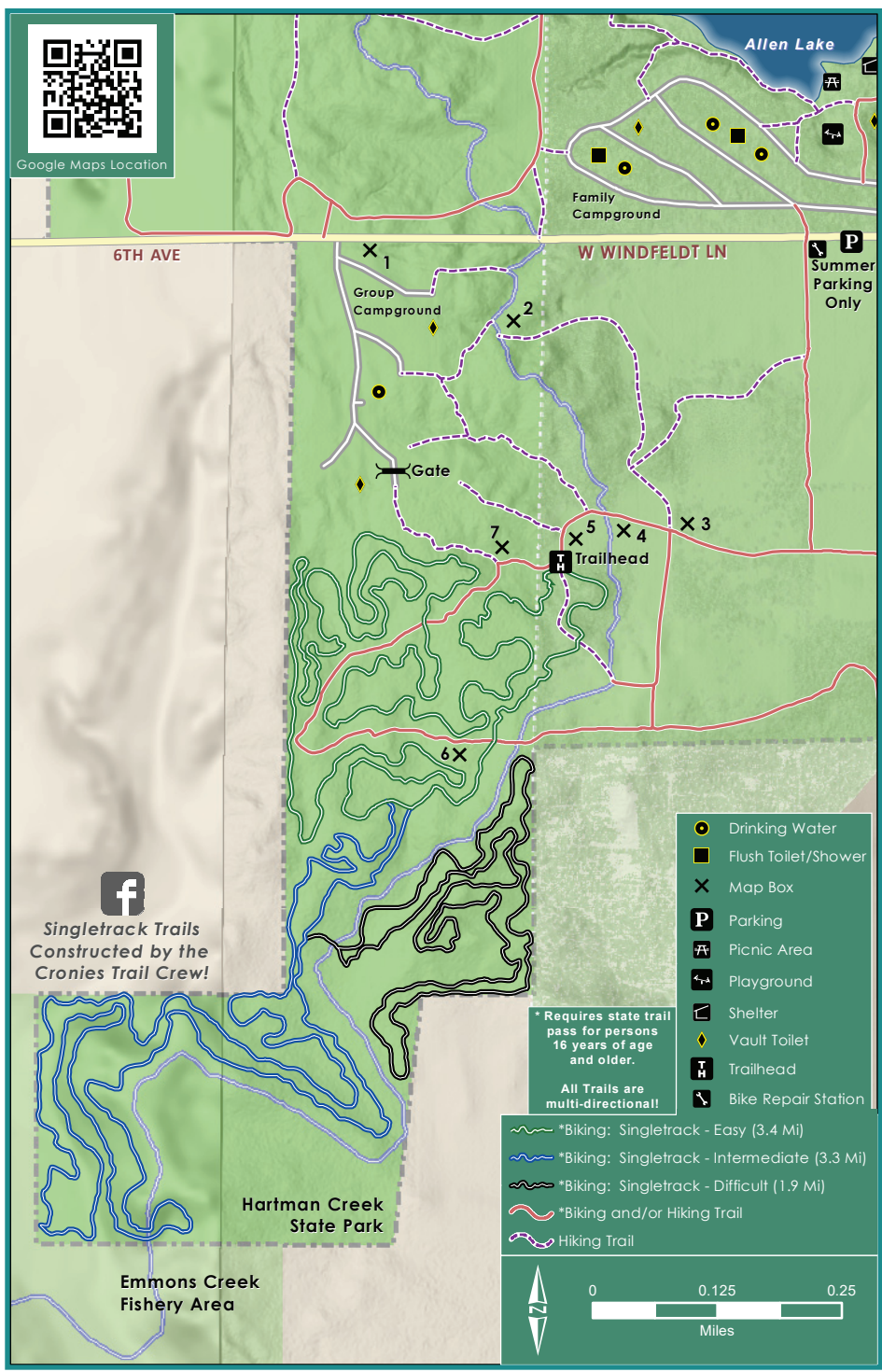
Volunteer Opportunities: Cronies Trail Crew on Facebook.com
Questions: Contact Hartman Creek State Park at (715)258-2372.

Visit <https://tinyurl.com/z6o67dd>





Google Maps Location

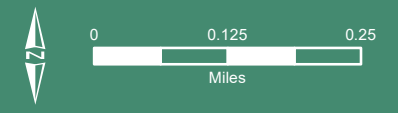


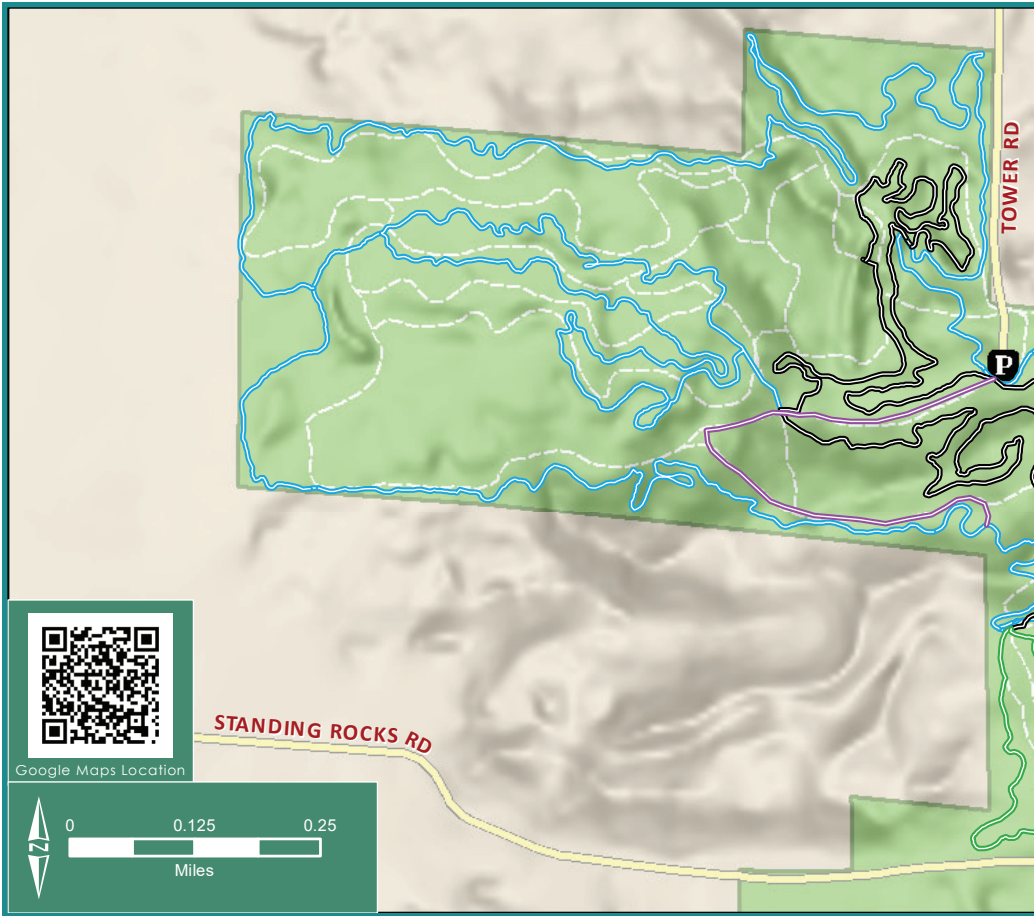
**Singletrack Trails
Constructed by the
Cronies Trail Crew!**

- Drinking Water
- Flush Toilet/Shower
- Map Box
- Parking
- Picnic Area
- Playground
- Shelter
- Vault Toilet
- Trailhead
- Bike Repair Station

* Requires state trail pass for persons 16 years of age and older.
All Trails are multi-directional!

- *Biking: Singletrack - Easy (3.4 Mi)
- *Biking: Singletrack - Intermediate (3.3 Mi)
- *Biking: Singletrack - Difficult (1.9 Mi)
- *Biking and/or Hiking Trail
- Hiking Trail





STANDING ROCKS COUNTY PARK

6

Standing Rocks trail system is a series of approximately 13 miles of single-track loops for beginners through advanced riders. The trail loops range from gentle wooded legacy single track, to machine built flow with sessionable downhill sections. Trails are open year round with closures for deer hunting and special events.

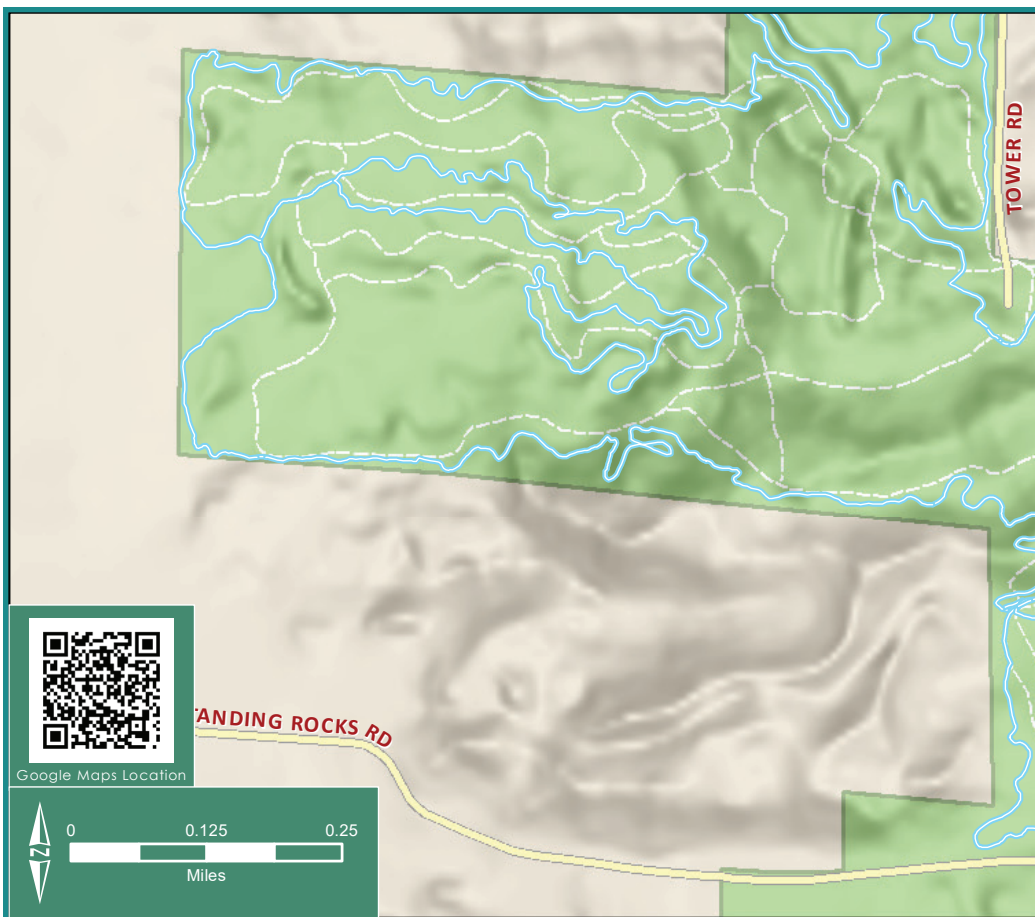
Fee: A trail pass is required for all users, passes can be purchased at <https://www.co.portage.wi.us/departments/parks/standing-rocks-park>

Parking: Available at 7690 Standing Rocks Road, Stevens Point, WI 54482.

Trail information: Follow: Point Area Single Track on Facebook. Contact Standing Rocks Park for trail conditions at 715-824-7250

Amenities: The Behnke Olson Outdoor Recreation Center is available for use, for open times please contact Portage County Parks. A bike repair stand and restrooms are located at the trailhead.





WINTER BIKING FAT STANDING ROCKS

6

Standing Rocks offers approximately 9 miles of groomed single-track trails. Users will find challenging climbs, fun rollers, jumps, and descents that follow the much of the summer trail systems. Trails are closed when temperatures are above freezing, all bikes must have a tire width of 3.7" or greater.

Fee: A trail pass is required for all users passes can be purchased at <https://www.co.portage.wi.us/departement/parks/standing-rocks-park>

Parking: Available at 7690 Standing Rocks Road, Stevens Point, WI 54482.

Trail information: Follow Point Area Single Track on Facebook. Contact Standing Rocks Park for trail conditions at 715-824-7250

Amenities: The Behnke Olson Outdoor Recreation Center is available for use, for open times please contact Portage County Parks. A bike repair stand and restrooms are located at the trailhead.





HARTMAN CREEK STATE PARK-WINTER FATBIKING 14

Distance: 8.6 miles in total; Green Loop - 3.4 miles, Blue Loop - 3.3 miles, Black Loop - 1.9 miles.

Surface: Routinely groomed snow.

Difficulty: Moderate. The groomed snow covers most of the obstacles within the trail, allowing for a smooth and unique riding experience.

Parking & Access: Available within Hartman Creek State Park, N2480 Hartman Creek Road, in Waupaca.

Fees: A State Park admission fee and State Trail Pass are required.

Amenities: Bike repair station. Vault toilets. Please remember to bring your own water. If needed, water can be found in the Park office; however, their hours are limited during the winter months.

Volunteer Opportunities: Cronies Trail Crew on Facebook.com

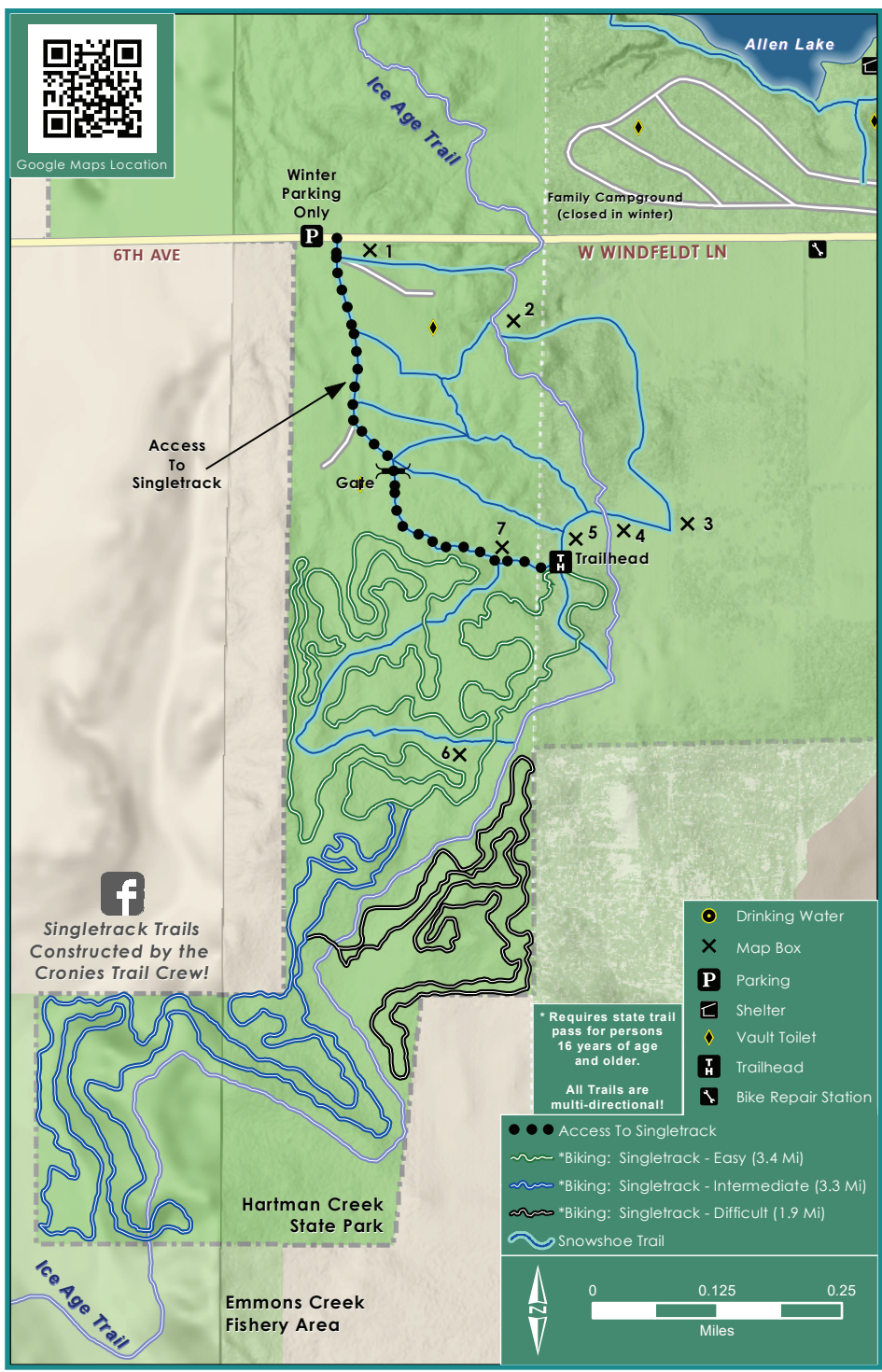
Questions: Contact Hartman Creek State Park at (715)258-2372. Office hours are limited during winter months.

Visit <https://tinyurl.com/z6o67dd>





Google Maps Location



Singletrack Trails
Constructed by the
Cronies Trail Crew!

* Requires state trail pass for persons 16 years of age and older.
All Trails are multi-directional!

Ice Age Trail

Hartman Creek State Park

Emmons Creek Fishery Area



HARTMAN CREEK STATE PARK

14

Open on a daily basis throughout the snow season with trails groomed for classic skiing.

Distance: 9 miles

Difficulty: Range of trails from easy to difficult.

Parking & Access: Available within Hartman Creek State Park, N2480 Hartman Creek Road, in Waupaca

Fees: A State Park admission fee and State Trail Pass are required.

Questions: Contact Hartman Creek State Park at (715) 258-2372. Office hours are limited during winter months.

Visit <https://tinyurl.com/z6o67dd>



CROSS COUNTRY SKIING - CLASSIC

0 0.125 0.25 0.5 Miles

- Park Office
- Parking
- Shelter
- Vault Toilet
- Ice Age Trail
- X-C Ski Trail - Easy*
- X-C Ski Trail - Intermediate*
- X-C Ski Trail - Difficult*

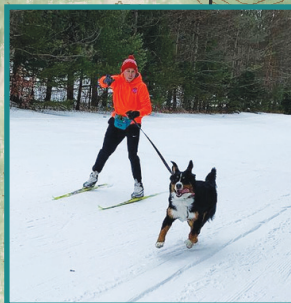
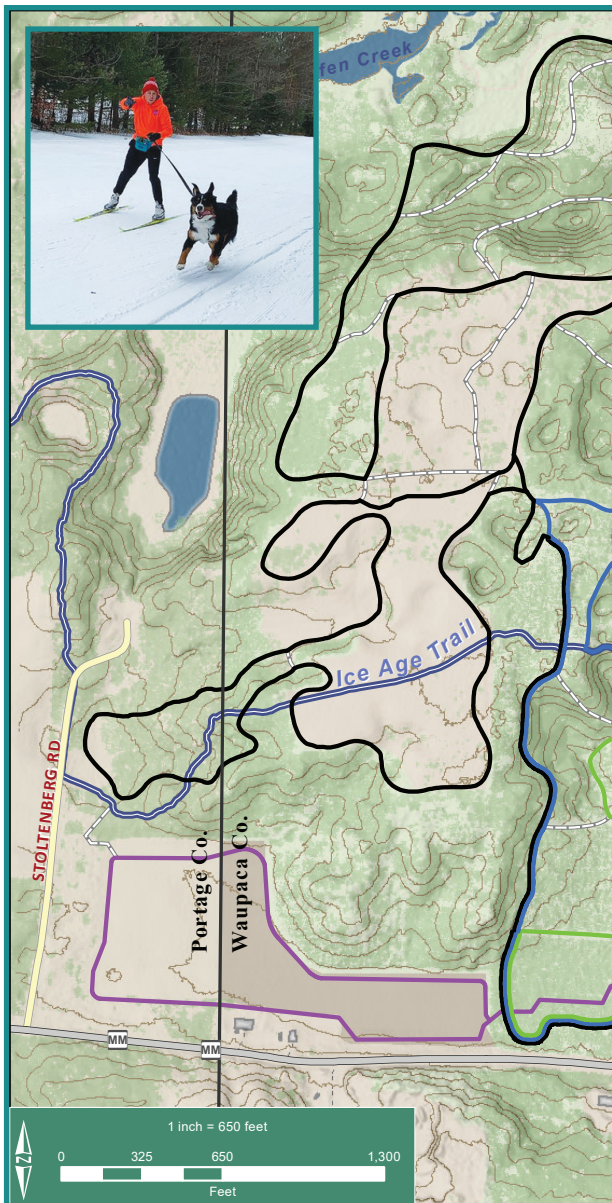
* Requires state trail pass for persons 16 years of age or older.

Map labels: Knight Lake, Orlando Lake, Youngs Lake, Bass Lake, Beasley Lake, Columbia Lake, Long Lake, Manomin Lake, Pope Lake, Whispering Pines (Closed in Winter), Marl Lake. Roads: RURAL RD, KNIGHT LN, S TAMMY TRL.

Trail labels: Pope Lake X-C Ski Trail, 0.7 mi, 1.1 mi.

QR Code: Google Maps Location





IOLA WINTER SPORTS CLUB 2

The trails are groomed for both skating and classic skiing. Skijoring is also available.

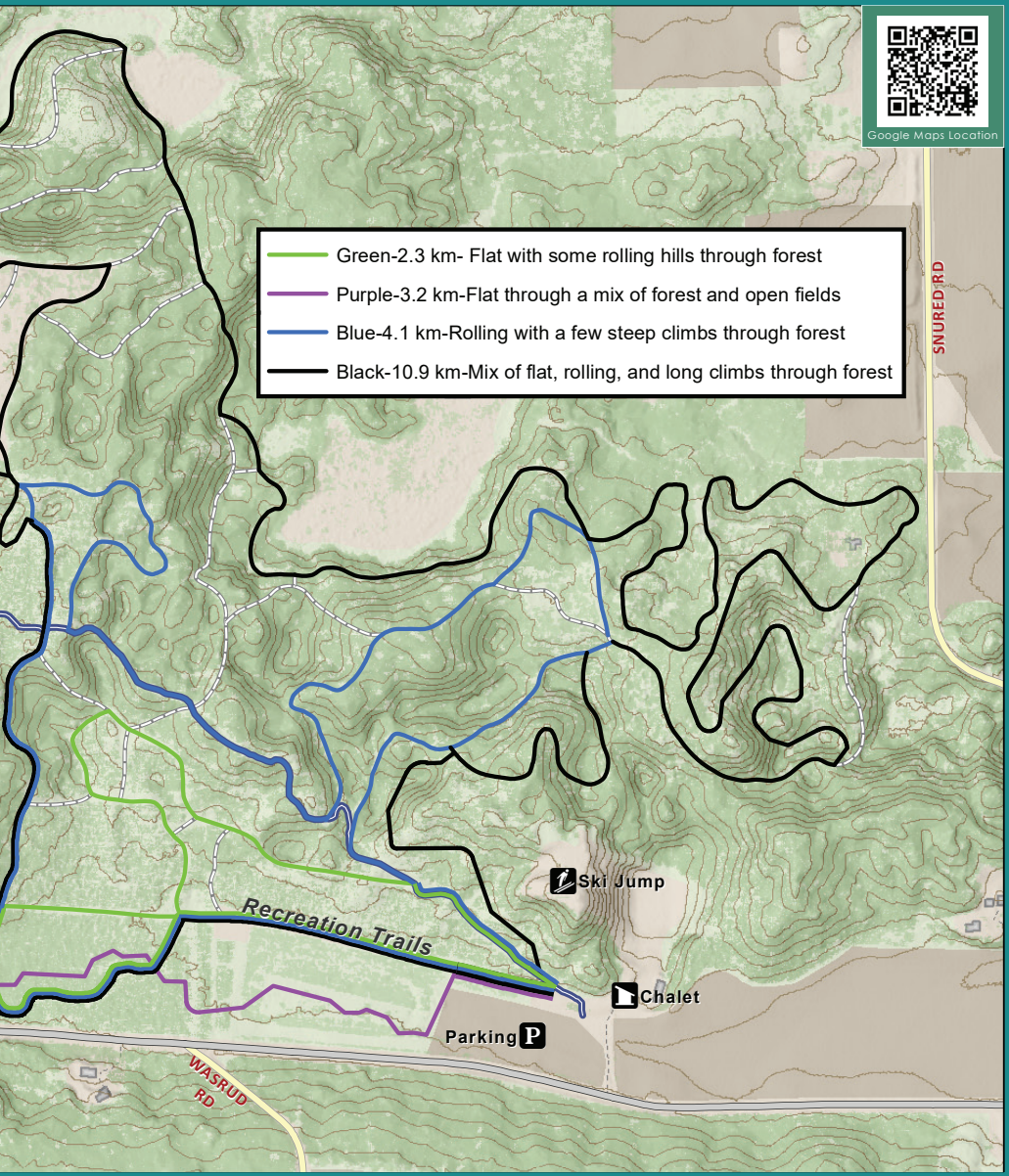
Distance: 12 miles

Difficulty: Easy to difficult.

Lights: 4 miles of lit trails for night skiing.



Google Maps Location



- Green-2.3 km- Flat with some rolling hills through forest
- Purple-3.2 km-Flat through a mix of forest and open fields
- Blue-4.1 km-Rolling with a few steep climbs through forest
- Black-10.9 km-Mix of flat, rolling, and long climbs through forest

Open: The Chalet and rental room are staffed on weekends. Weekdays the trails are open to members and self-serve to others.

Fees: 4 and under are free. A trail fee is required for all other users. Self registration is available.

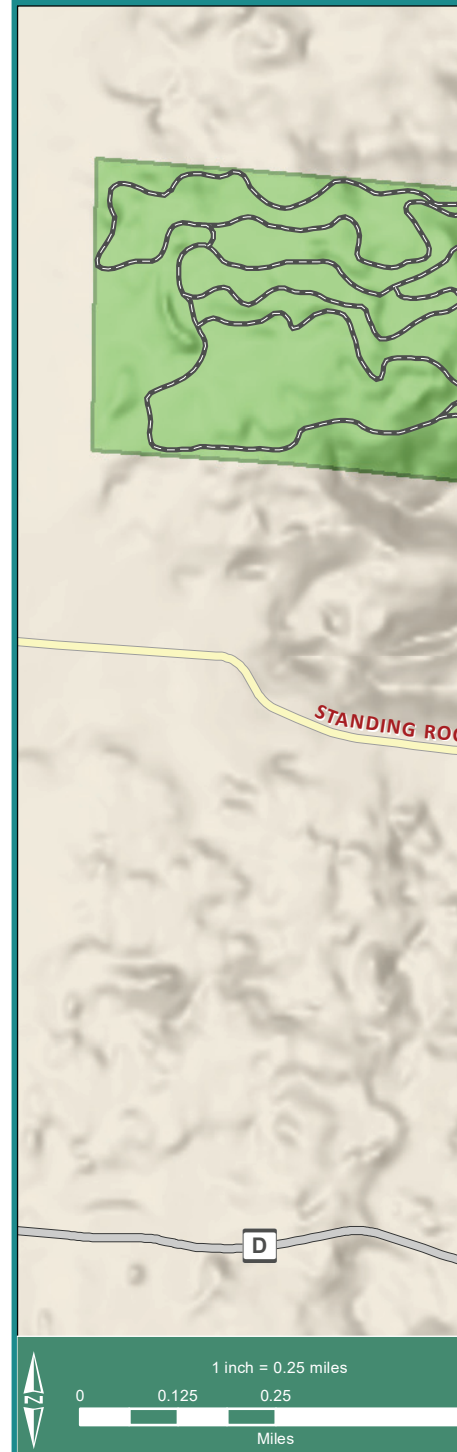
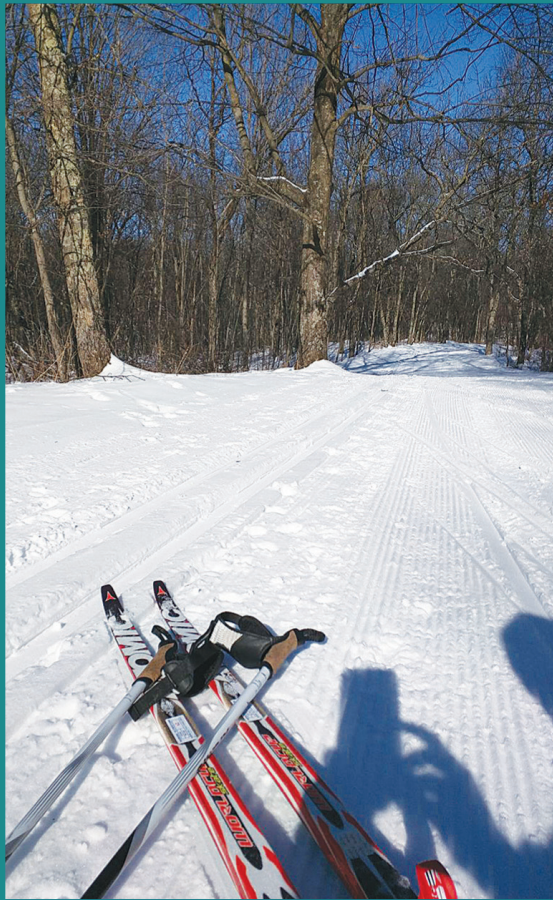
Questions: Call (715)445-3411 for trail conditions or additional information.

Visit
www.iolawintersportsclub.org
and Iola Winter Sports Club
on Facebook

STANDING ROCKS COUNTY PARK

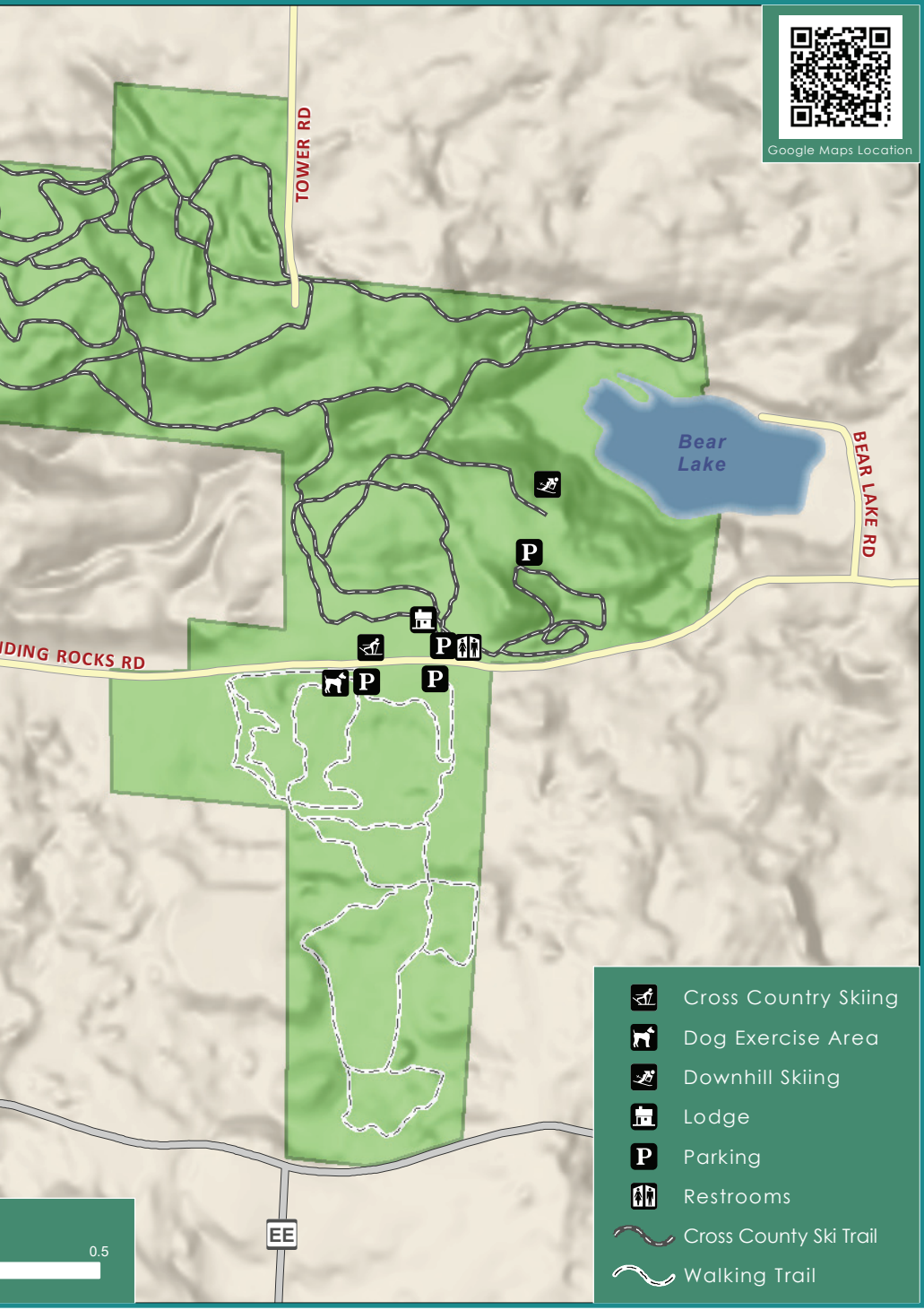
6

Cross-country ski trails are open on a daily basis throughout the snow season. There are approximately 15km (10 mi) of trails. The trail system also features a lighted 700 meter loop with manmade snow. About 75% of the trails are rated as intermediate or expert trails because of the many hills and distances. Trails are groomed for both diagonal stride and skate skiing. The Behnke Olson Outdoor Recreation Center (lodge) is open on weekdays from 11 a.m.-4:30 p.m. and on weekends from 8:30 a.m.-4:30 p.m. The center is located at 7782 Standing Rocks Rd, Stevens Point, WI 54482.

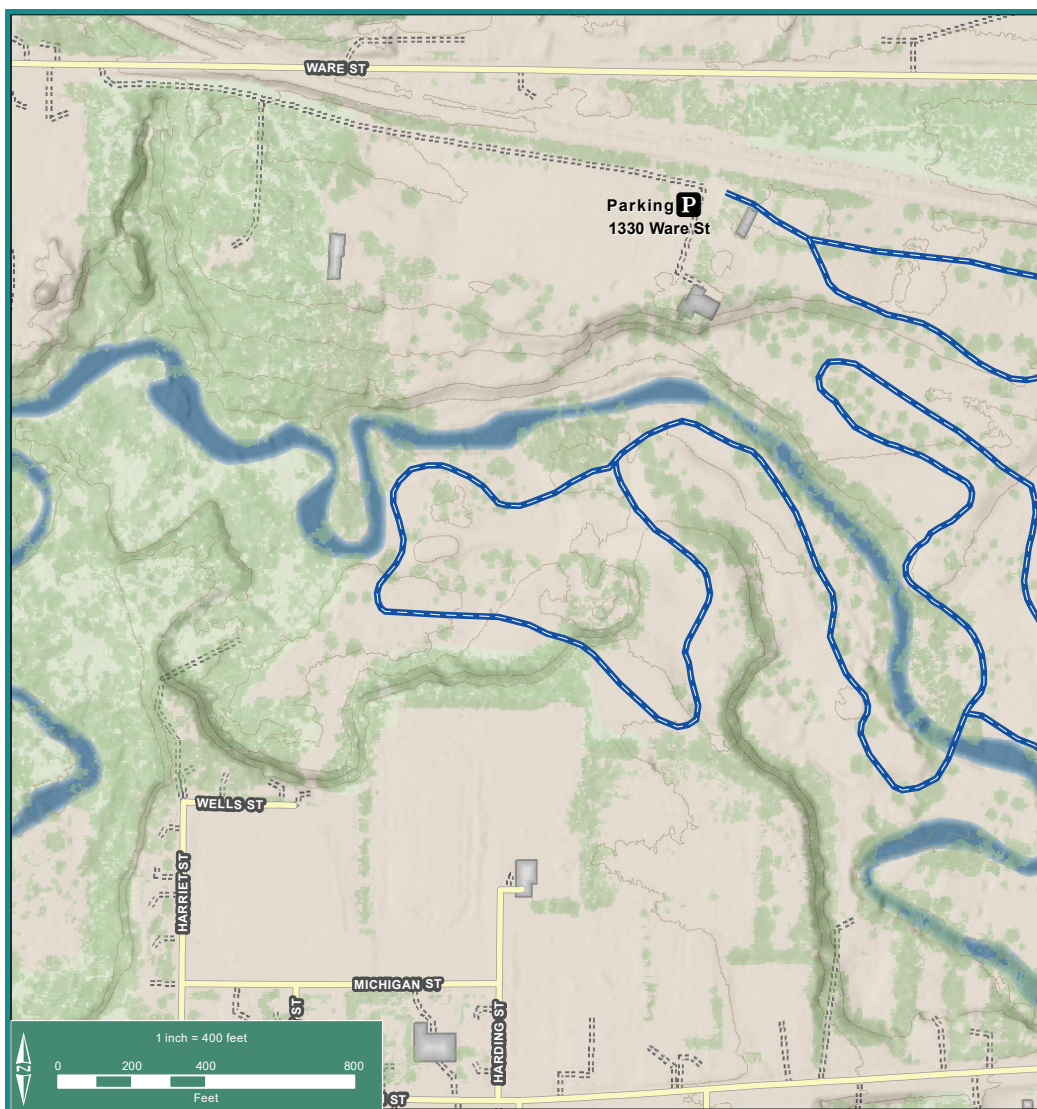




Google Maps Location



- Cross Country Skiing
- Dog Exercise Area
- Downhill Skiing
- Lodge
- Parking
- Restrooms
- Cross County Ski Trail
- Walking Trail



WAUPACA COUNTRY CLUB / WINTER REC. TRAIL

12

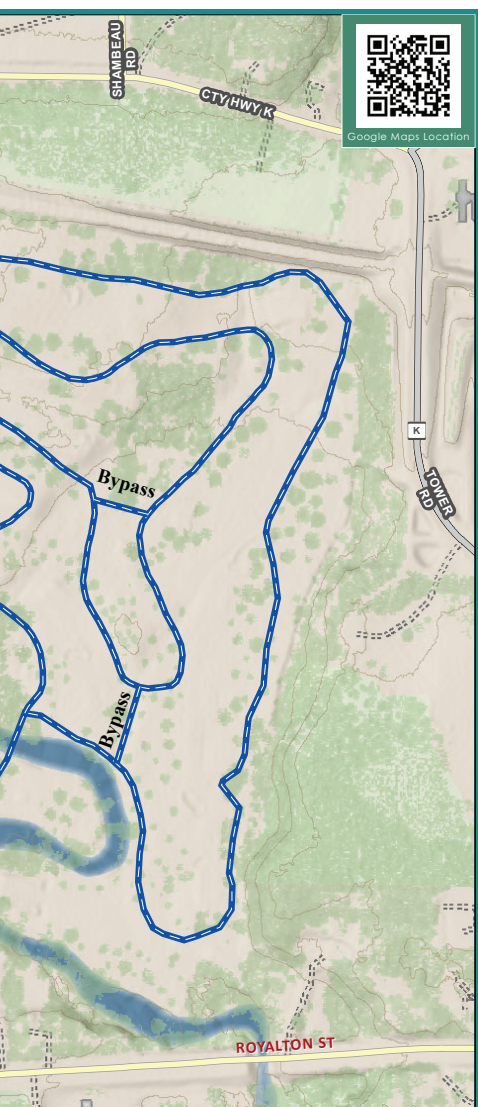
Distance: Two loops with a total distance of 3.2 miles

Surface: Gradually rolling terrain weaving between the tees, greens, and fairways of the golf course at the Waupaca Country Club. Groomed for fatbiking, cross country skiing (classic & skate) and snowshoeing.

All users must remain on groomed trail only!

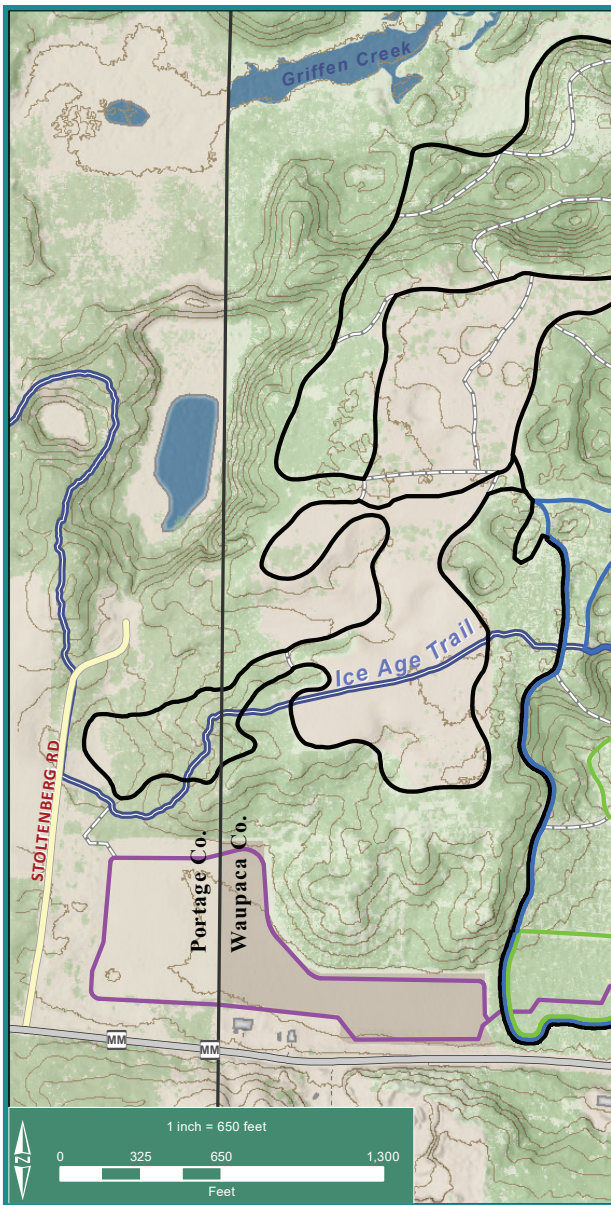
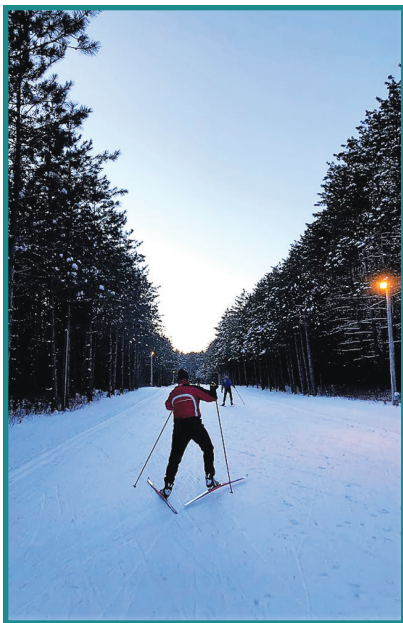
Difficulty: Easy/Moderate

Parking & Access: 1330 Ware Street, Waupaca



Fee: A winter trail pass is required for all users. Self-registration is available at the trailhead at 1330 Ware Street. Season passes are available from Waupaca County Parks & Recreation Department (715)258-6243

Visit <https://tinyurl.com/z4cljpk>



IOLA WINTER SPORTS CLUB 2

The trails are groomed for both skating and classic skiing. Skijoring is also available.

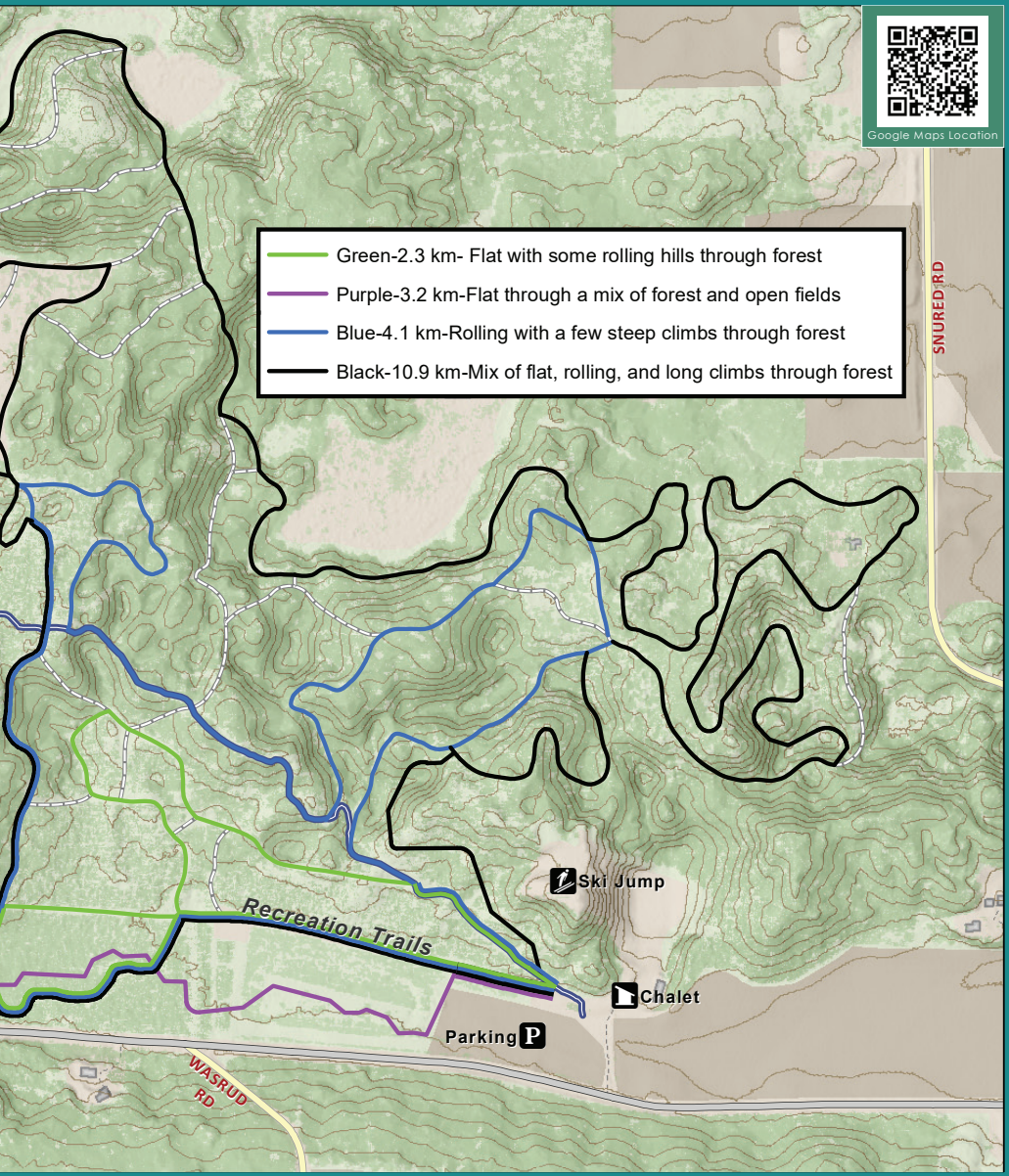
Distance: 12 miles

Difficulty: Easy to difficult.

Lights: 4 miles of lit trails for night skiing.



Google Maps Location



- Green-2.3 km- Flat with some rolling hills through forest
- Purple-3.2 km-Flat through a mix of forest and open fields
- Blue-4.1 km-Rolling with a few steep climbs through forest
- Black-10.9 km-Mix of flat, rolling, and long climbs through forest

Open: The Chalet and rental room are staffed on weekends. Weekdays the trails are open to members and self-serve to others.

Fees: 4 and under are free. A trail fee is required for all other users. Self registration is available.

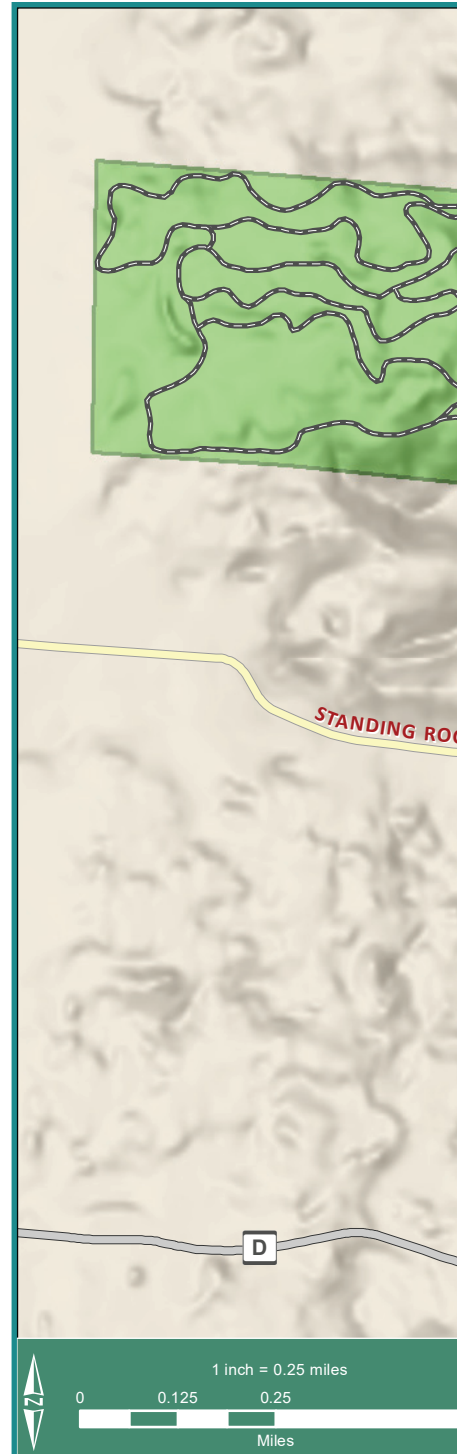
Questions: Call (715)445-3411 for trail conditions or additional information.

Visit
www.iolawintersportsclub.org
and Iola Winter Sports Club
on Facebook

STANDING ROCKS COUNTY PARK

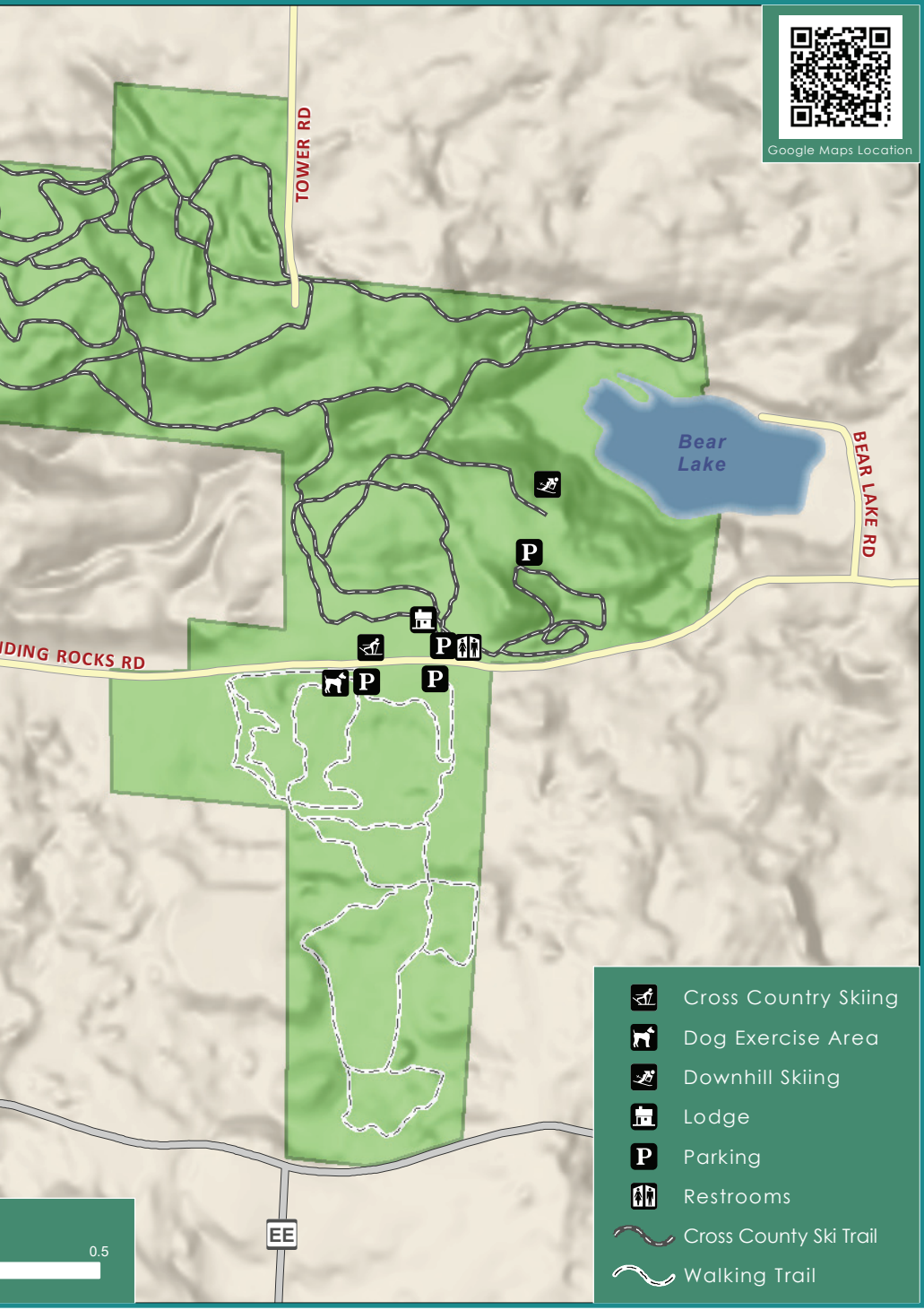
6

Cross-country ski trails are open on a daily basis throughout the snow season. There are approximately 15km (10 mi) of trails. The trail system also features a lighted 700 meter loop with manmade snow. About 75% of the trails are rated as intermediate or expert trails because of the many hills and distances. Trails are groomed for both diagonal stride and skate skiing. The Behnke Olson Outdoor Recreation Center (lodge) is open on weekdays from 11 a.m.-4:30 p.m. and on weekends from 8:30 a.m.-4:30 p.m. The center is located at 7782 Standing Rocks Rd, Stevens Point, WI 54482.

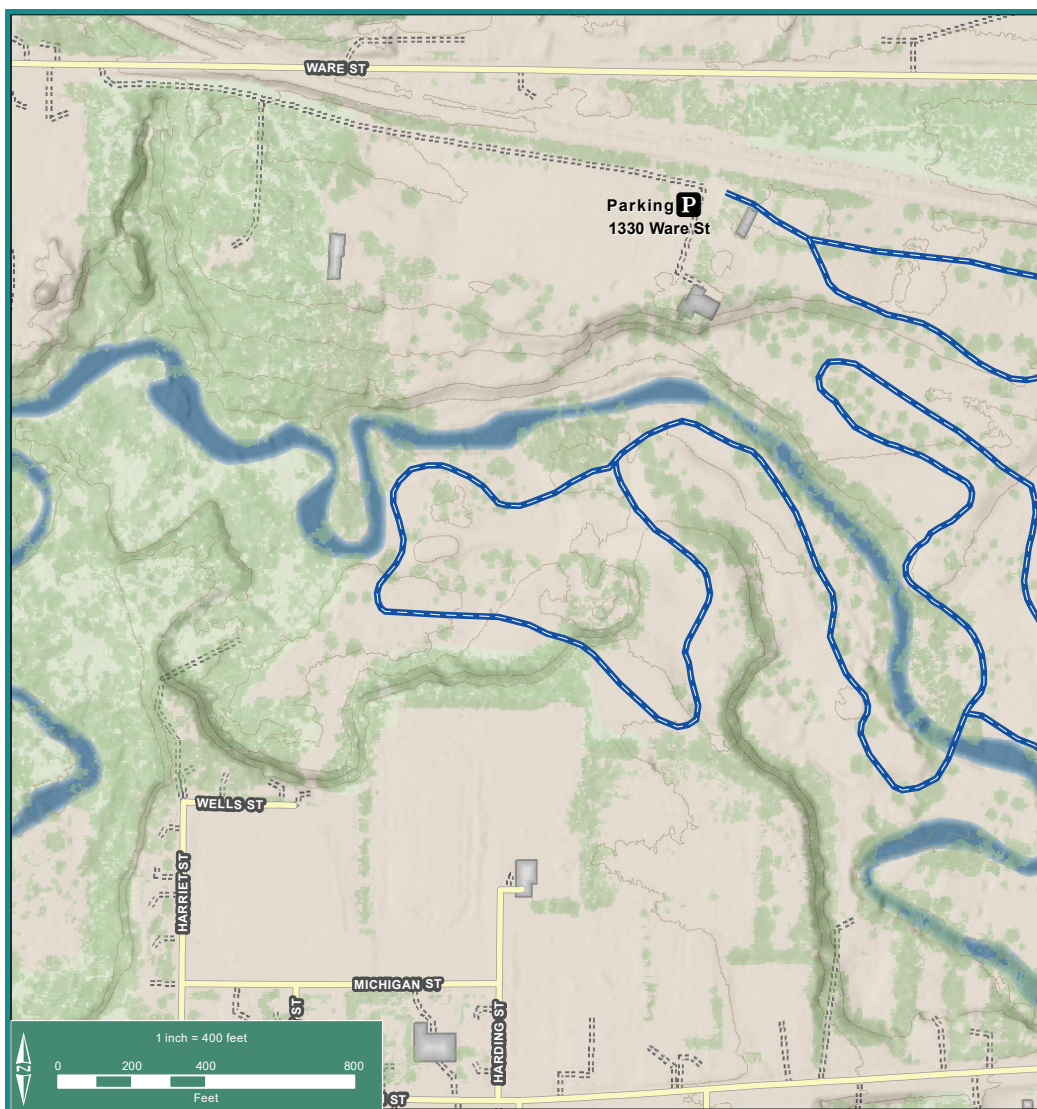




Google Maps Location



- Cross Country Skiing
- Dog Exercise Area
- Downhill Skiing
- Lodge
- Parking
- Restrooms
- Cross County Ski Trail
- Walking Trail



WAUPACA COUNTRY CLUB / WINTER REC. TRAIL

12

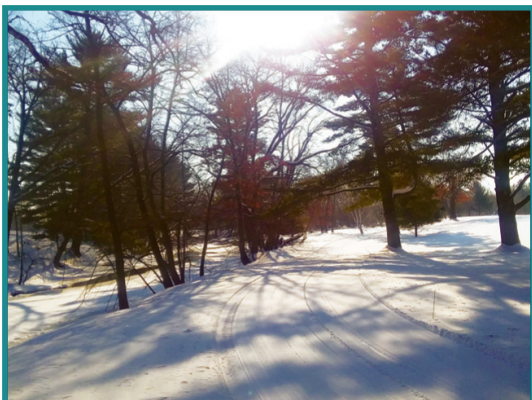
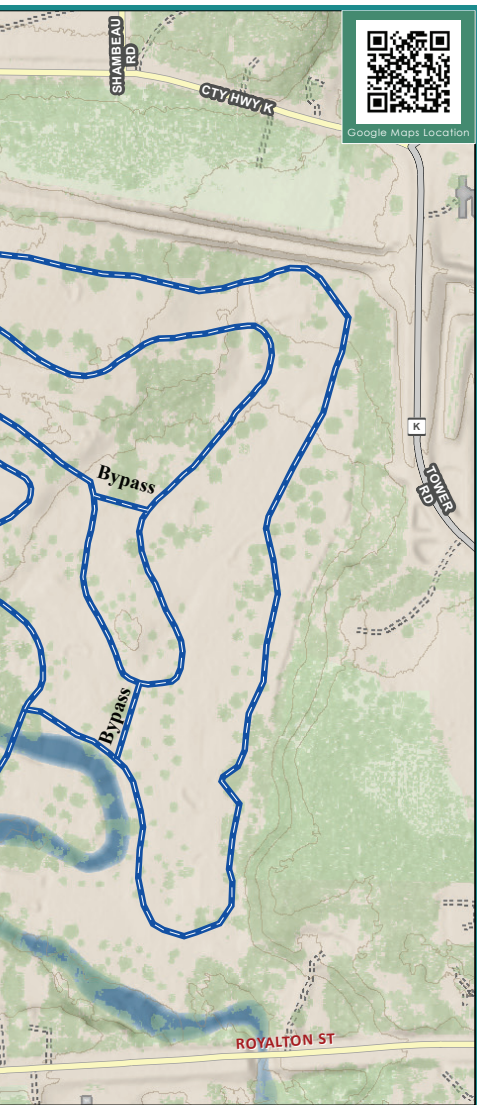
Distance: Two loops with a total distance of 3.2 miles

Surface: Gradually rolling terrain weaving between the tees, greens, and fairways of the golf course at the Waupaca Country Club. Groomed for fatbiking, cross country skiing (classic & skate) and snowshoeing.

All users must remain on groomed trail only!

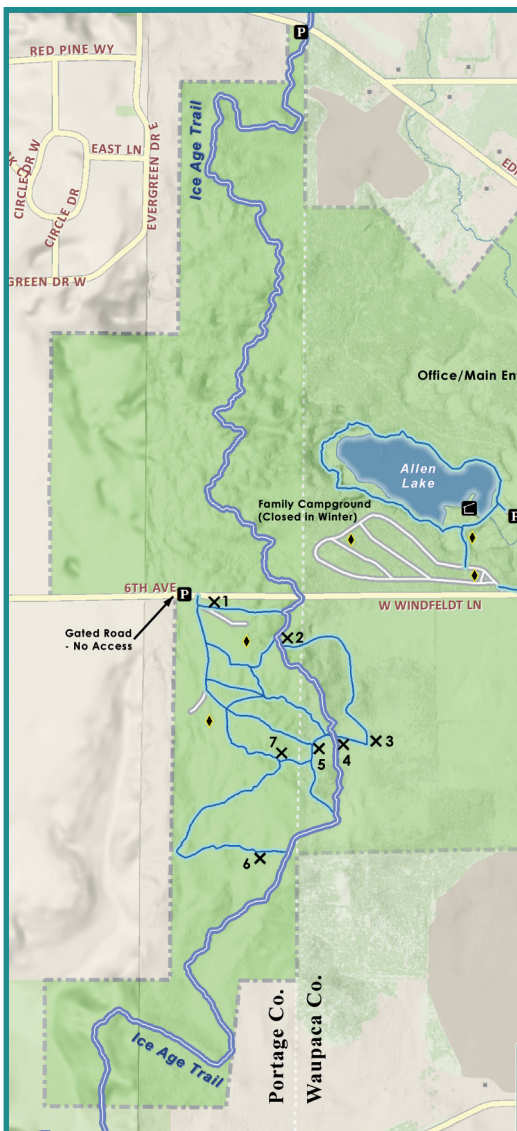
Difficulty: Easy/Moderate

Parking & Access: 1330 Ware Street, Waupaca



CROSS COUNTRY SKIING - SKATE

Fee: A winter trail pass is required for all users. Self-registration is available at the trailhead at 1330 Ware Street. Season passes are available from Waupaca County Parks & Recreation Department (715)258-6243
Visit <https://tinyurl.com/z4cljpk>



HARTMAN CREEK STATE PARK

14

Distance: Approximate 5.9 miles. There are three areas in the park with snowshoe trail. Starting at the easternmost area and moving West; Middle Lake/Hartman Lake segments 2.7 miles, Allen Lake/Deer Path Trail segment 1.0 mile, South of W. Windfeldt Lane segments 2.2 miles.

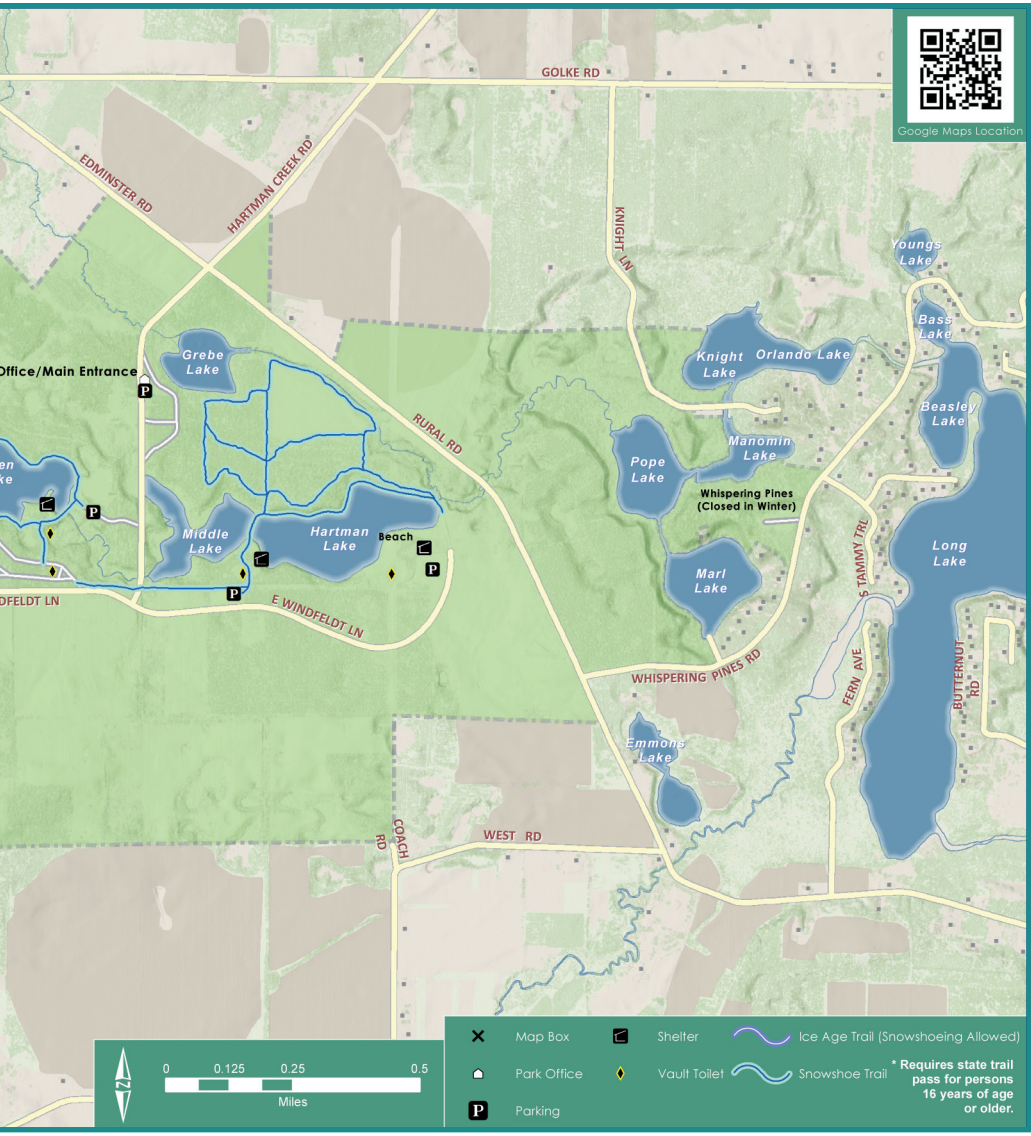
Difficulty: Easy to Moderate

Surface: Ungroomed trail with a wide corridor and rolling terrain.

Parking and Access: Parking is available in multiple locations within the park.



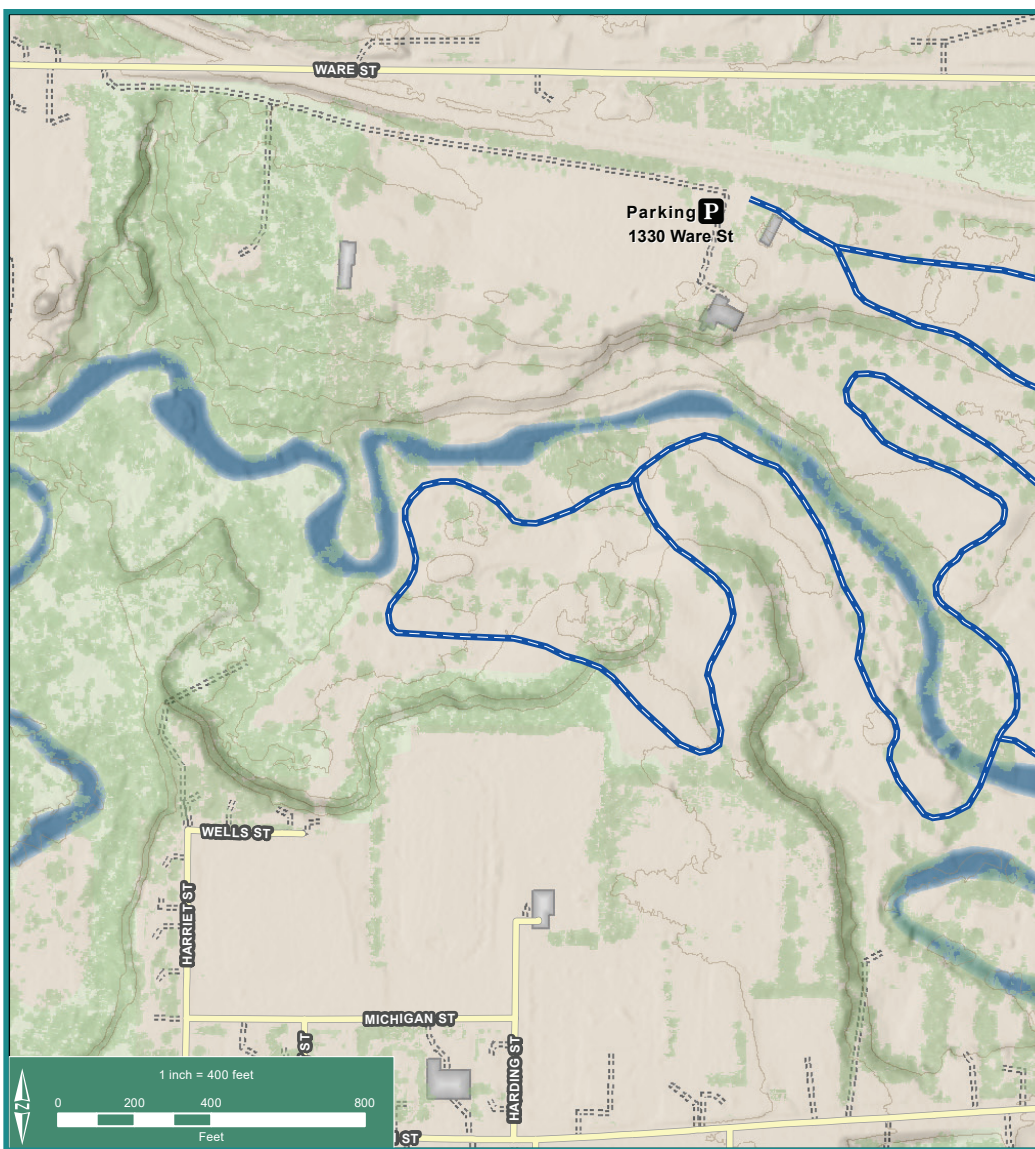
Google Maps Location



There are two parking lots located off of W. Windfeldt Lane to access Middle Lake /Hartman Lake trail segments, and the trail segments south of W. Windfeldt Lane. There is one parking lot serving the Allen Lake/Deer Path Trail segment located off the main entrance road.

Fees: A state park admission fee is required to enter the park. Questions: Contact Hartman Creek State Park at (715)258-2372. Office hours are limited during the winter months.

Visit <https://tinyurl.com/z6o67dd>



WAUPACA COUNTRY CLUB / WINTER REC. TRAIL

12

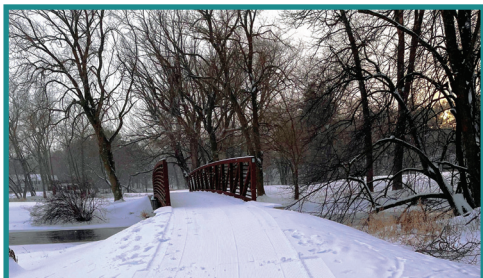
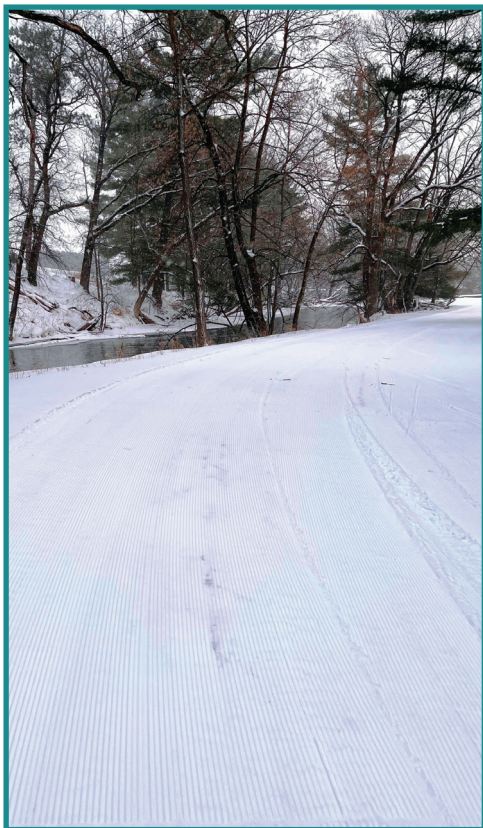
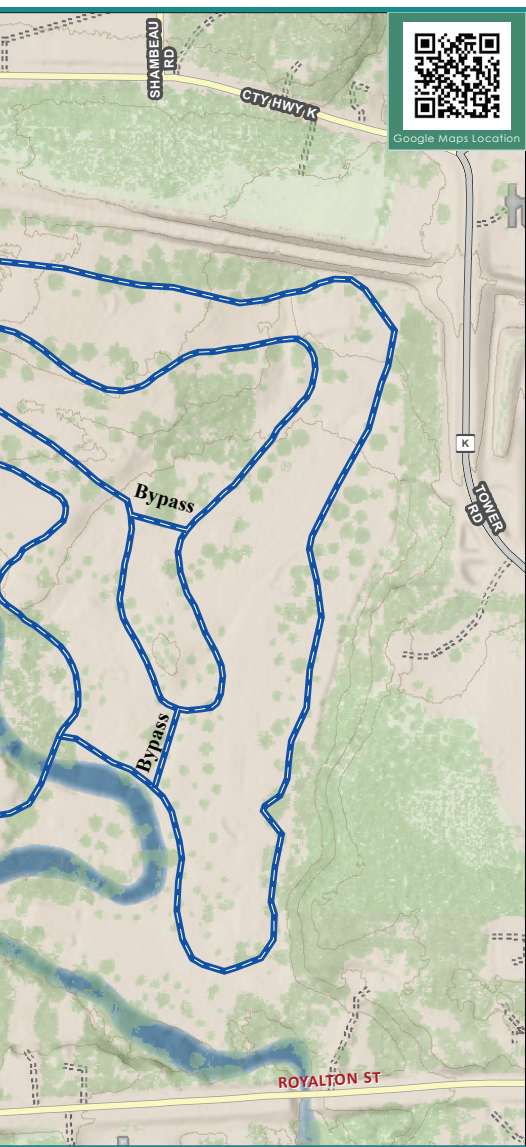
Distance: Two loops with a total distance of 3.2 miles

Surface: Gradually rolling terrain weaving between the tees, greens, and fairways of the golf course at the Waupaca Country Club. Groomed for fatbiking, cross country skiing (classic & skate) and snowshoeing.

All users must remain on groomed trail only!

Difficulty: Easy/Moderate

Parking & Access: 1330 Ware Street, Waupaca



SNOWSHOEING

Fee: A winter trail pass is required for all users. Self-registration is available at the trailhead at 1330 Ware Street. Season passes are available from Waupaca County Parks & Recreation Department (715)258-6243

Visit <https://tinyurl.com/z4cljpk>

RIVER RIDGE TRAIL - SWAN PARK

10

Distance: 2.3 miles

Surface: Groomed for winter use. Trail follows summer hiking and biking trail.

Difficulty: Easy

Parking & Access: Available at Swan Park (909 Brainard Drive) in Waupaca

Fees: None

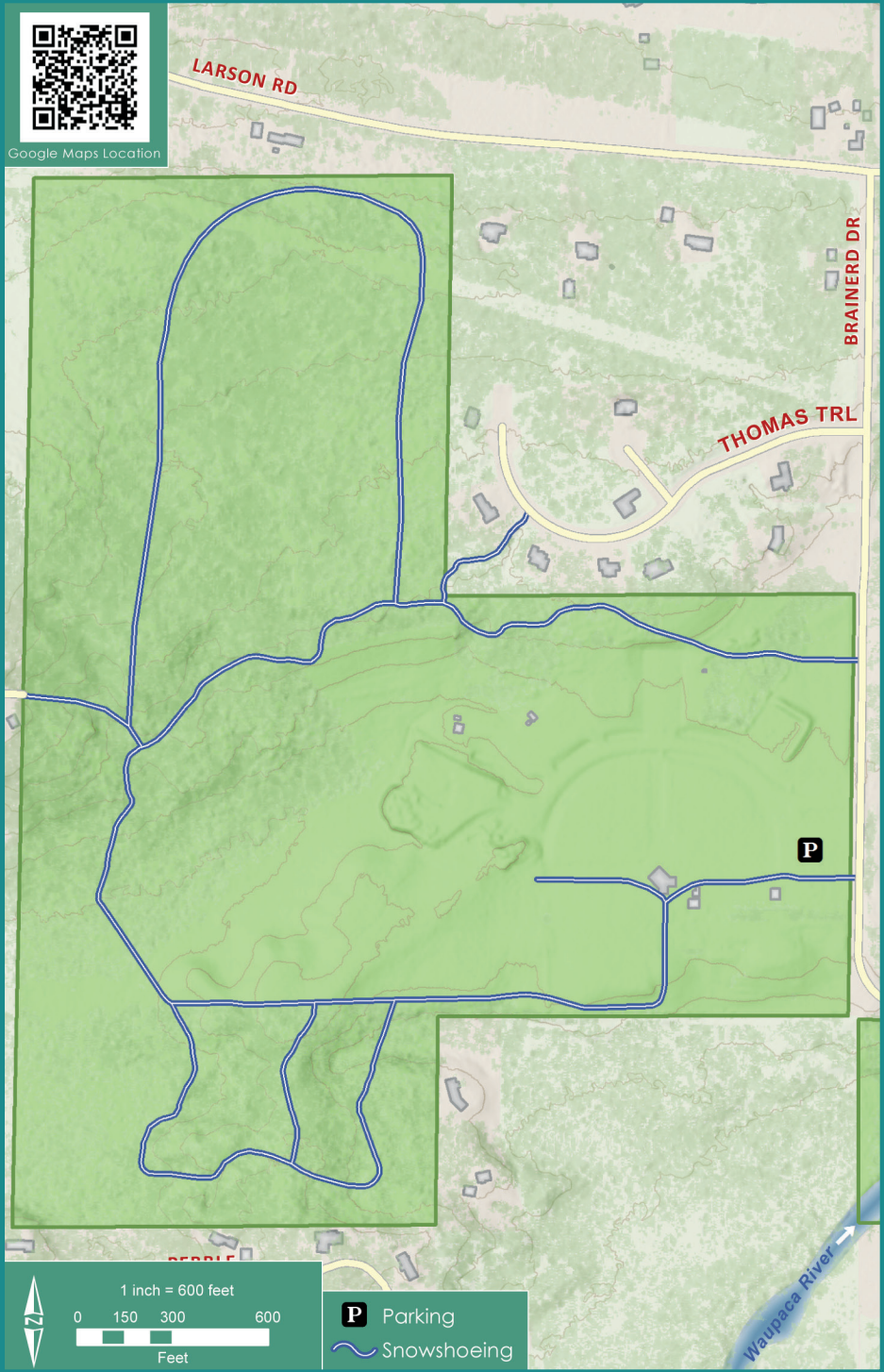
Questions: City of Waupaca Parks & Recreation Department, (715)258-4435. Those interested in volunteering to help with the trail and park can contact the City of Waupaca Parks & Recreation Department.

Visit www.cityofwaupaca.org/parksrec/





Google Maps Location





JORGENS PARK

4

Consisting of about forty acres of rolling fields, meadows, wooded-timber, and wetland areas—this property encompassing the northern and eastern shores of Silver Lake has been developed into Jorgens Park and Preserve and Gunny's Hiking Trail. These facilities include, picnic, hiking, and fishing areas—while preserving the natural beauty and serenity of this property.

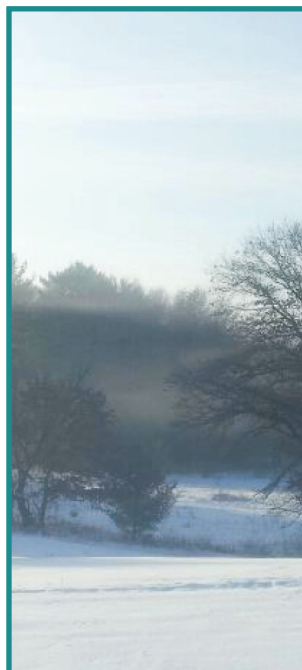
Amenities: Portable Toilet available year round. The community of Scandinavia has a charming downtown with a bakery, coffee shop, and multiple dining and shopping establishments.

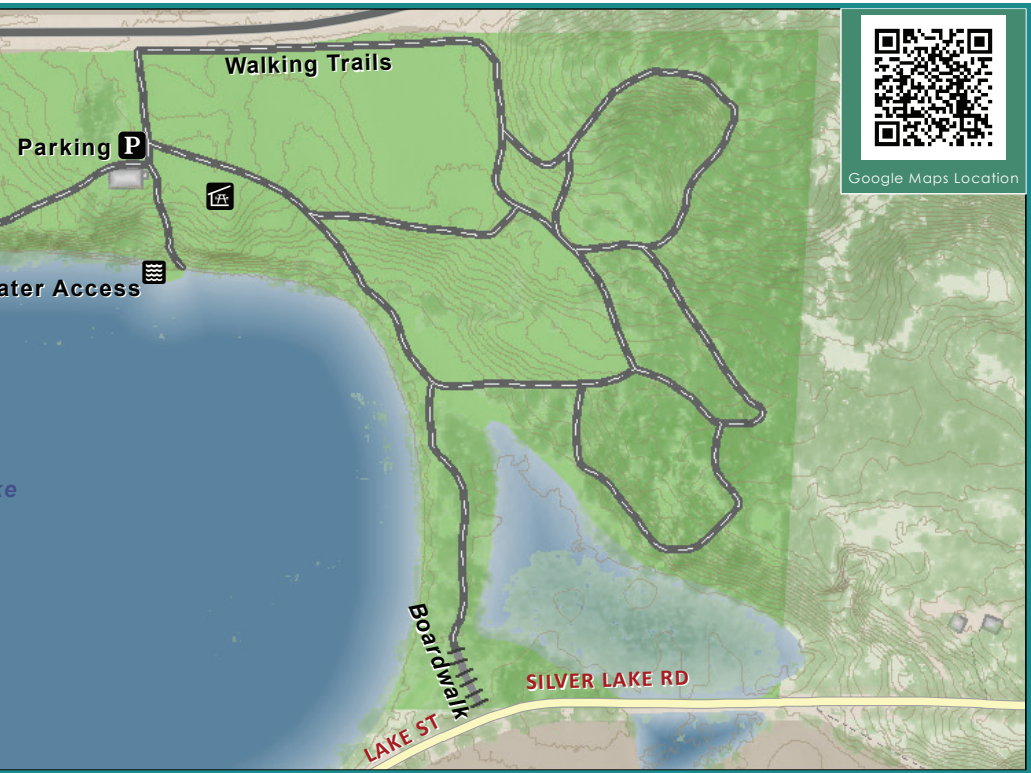
Water: Silver Lake is 71 acres with a maximum depth of 17 feet.

Hiking: Approx. 2 miles of trails throughout the wooded/hilly property – a boardwalk crosses the lower wetland area.

Notes: Hiking, biking, snowshoeing and cross-country skiing welcome.

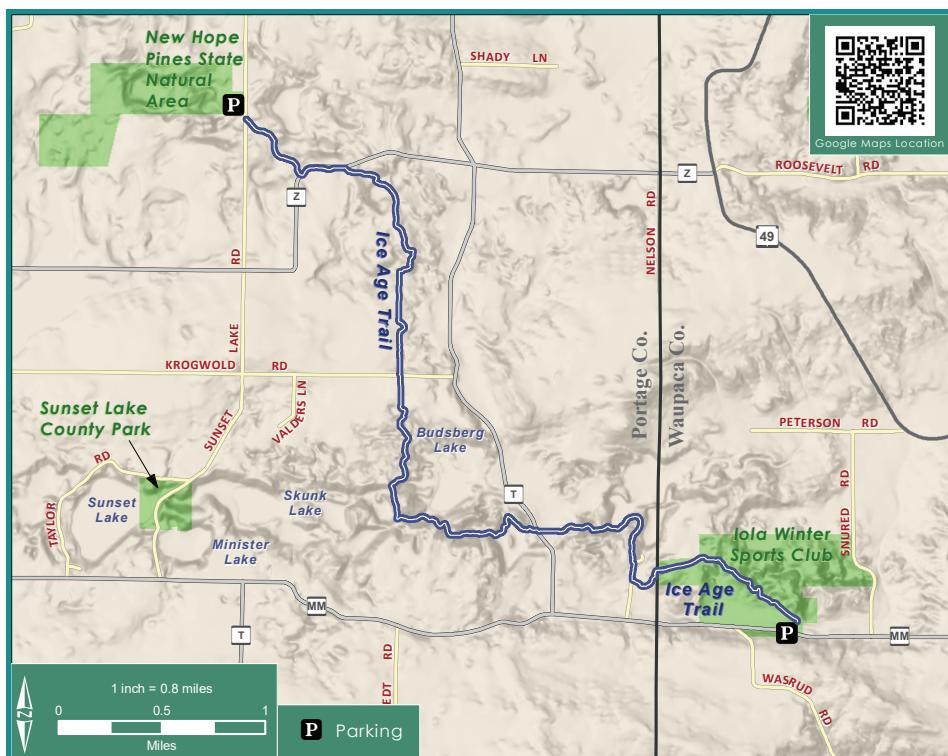
Visit [Facebook.com/JorgensPark](https://www.facebook.com/JorgensPark)





SNOWSHOEING





ICE AGE TRAIL

15

Distance: 24.2 miles represented.

Starting at the southernmost segment and moving North; South of 2nd Ave is Murry Creek Loop (2.7 miles), Emmons Creek segment (2.6 miles), Hartman Creek segment (4.3 miles), Waupaca River segment (7.25 miles), Skunk & Foster Natural Area (4.3 miles), and New Hope-Iola Ski Hill segment (5.6 miles).

Parking & Access: Starting South at the southernmost segment and moving North; trail access exists at 2nd Ave., Stratton Lake Rd., Emmons Creek Rd., within Hartman Creek State Park, Edminister Rd, Hwy. 54, Foley Rd., Skunk & Foster Lake State Natural Area, and the Iola Winter Sports Club.

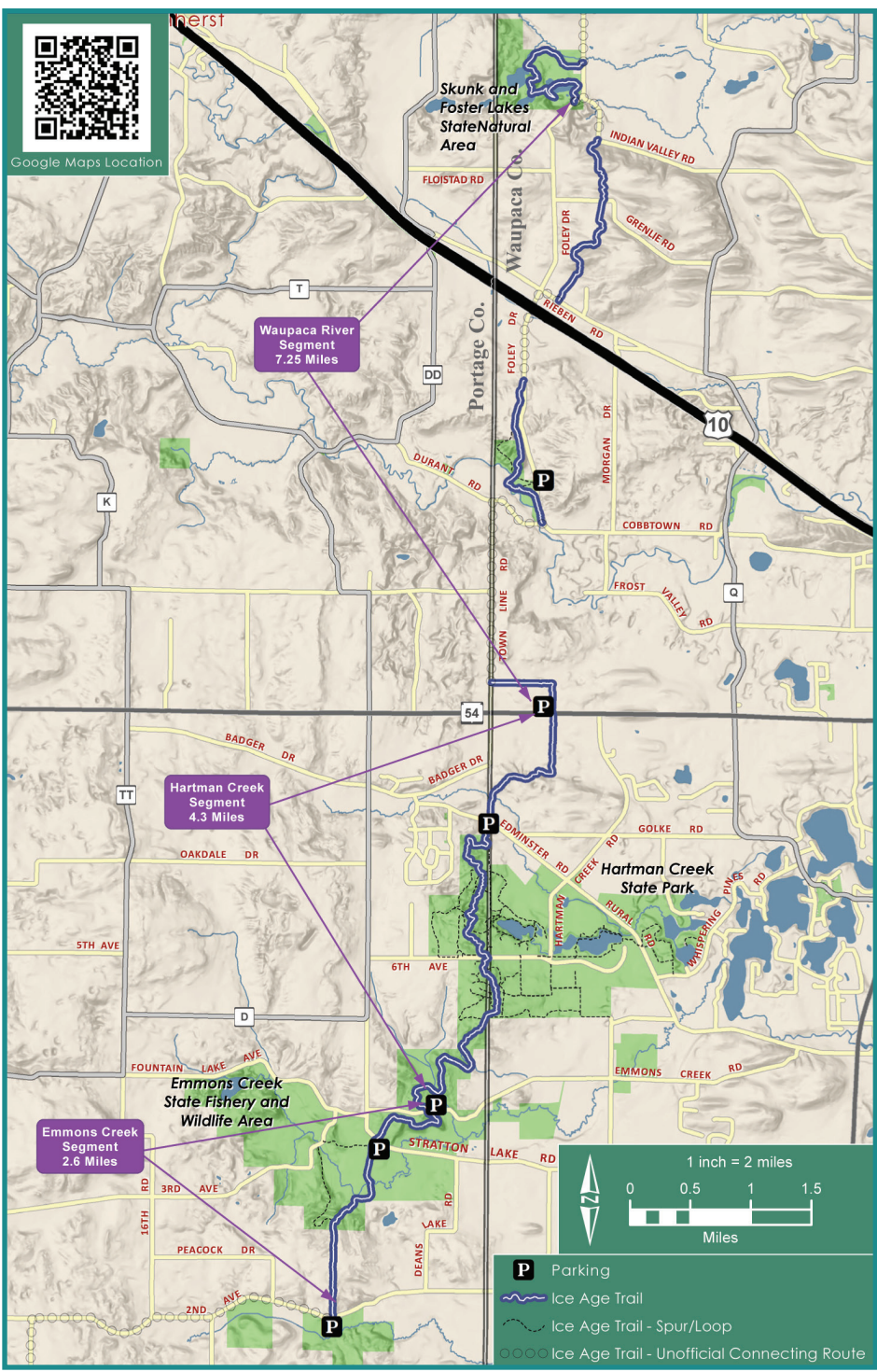
Fees: None

Visit www.iceagetrail.org





Google Maps Location





WAUPACA
CHAIN O' LAKES



*Tag us in your
adventures
on social media*
#wearewaupaca