

The best of all seasons!



DISCOVER

WOOD COUNTY 2024

ATTRACTIONS



PARKS & RECREATION



EVENTS & FESTIVALS



YOUR PLACE TO PLAY

Slots | Dining | Bar | C-Store | Shuttle | Valet



Discover the excitement at Ho-Chunk Gaming Nekoosa with 400+ slot machines, a full-service bar, and dining at the Swiftwater lounge. Elevate your experience with the Rewards Club offering exclusive perks and special Veteran promotions. Enjoy RV parking, shuttle service, and Whitetail Crossing convenience. Join us today for outstanding service and unforgettable moments!

HO-CHUNK GAMING
NEKOOSA

949 CTY RD G, NEKOOSA, WI 54457 | 800.782.4560



ho-chunggaming.com/nekoosa



A Tale of Two WATER PARKS

Wood County is home to two large aquatic complexes – with a Wisconsin Rapids facility completed in 2020 and the Marshfield facility completed in July 2021.

The Wisconsin Rapids Recreation Complex features a skate park, new playground equipment, a splash pad with night illumination, an outdoor shelter, tennis court, pickleball courts, and an aquatics park.

The aquatics park has three pools – a tot pool with two slides, spray features, and a lazy river; a leisure pool with basketball hoops, water walk, a lazy river with rapids action, tube water slide, and a body water slide; and a recreation pool with basketball hoops, lap swimming, zip line, diving board, and climbing wall.

The Vandehey Waters Aquatic Center has a positive economic impact in Marshfield, especially at the south end of town where it joined Wildwood Park & Zoo and several ice cream shops.

The new center includes two tube slides, two diving boards, a climbing wall, basketball hoops, kid’s play structure, a current channel, and lap lanes.

Both complexes have concessions, shelters, and various amenities.



DISCOVER WOOD COUNTY

The best of all seasons

is published by Multi Media Channels, LLC.



PO Box 408
Waupaca WI 54981
Hours: Monday-Friday 8am-5pm



© Copyright Multi Media Channels LLC 2024. All Rights Reserved. No part of this publication or any of its contents may be reproduced, copied, modified, or adapted without the prior written consent of Multi Media Channels LLC.

DISCOVER Contents

ARPIN.....	4	PORT EDWARDS.....	20
AUBURNDALE.....	6	RUDOLPH.....	22
GRAND RAPIDS/KELLNER.....	8	VESPER.....	24
MARSHFIELD.....	10	WISCONSIN RAPIDS.....	26
Central Wisconsin State Fair.....	12	Events & Festivals.....	28
Events & Festivals.....	12	McMillan Memorial Library.....	26
Hub City Days Car & Bike Show...	13	Parks & Recreation Dept.....	26
Marshfield Wildwood Zoo.....	14	Water Ski Show Championships ...	29
Parks & Recreation Dept.....	14	Wisconsin Rapids Rafters.....	28
Wenzel Family Plaza.....	14	Wisconsin Rapids Riverkings...	28
NEKOOSA.....	16	WOOD COUNTY LIBRARIES.....	28
Pumpkin Fest.....	17	WOOD COUNTY PARKS.....	9
PITTSVILLE.....	19		

To view this publication online, visit wrcitytimes.com and click on the Discover Wood County ad



COVER PHOTOS: Glacial Lake Cranberries, Performing Arts Center of Wisconsin Rapids, Wisconsin State Firefighters Memorial, Blossom Festival, Central Wisconsin Cultural Center, Lake Wazeecha

DISCOVER

Arpin



Christmas in Kandy Kane Park

An annual nighttime holiday parade is set for the second Saturday in December. Following the parade, the lights come on in the park and Santa makes an appearance, to visit with the kids and hear their Christmas wishes. For more information follow Friends of Kandy Kane Park on Facebook.

Arpin Truck & Tractor Pull

The annual Arpin Truck & Tractor pull is held the first weekend in August. ATV's, garden tractors, trucks and tractors compete. On Friday evening, modified and stock ATV's and garden tractors compete. Saturday is the main competition with truck pulling weigh-in and registration. Sunday's events begin with a parade on Main Street. The tractor pull starts at 1 p.m. Sunday The Arpin Truck & Tractor Pull is held in Arpin's Kandy Kane Park and is sponsored by the Arpin Advancement Association.



Newman's 1st Street Miniature Golf & Ice Cream

2811 1st Street South, Wisconsin Rapids (near Airport)
715-421-1180

Family Friendly Prices!

**Open Mother's Day Weekend thru Labor Day
 Enjoy Soft Serve Treats!**



Opening May 11th (hours thru June 3rd)

Mon-Fri School Days 4 pm - 8 pm
 • Sat 10 am - 8 pm • Sunday 1 pm - 8 pm
 Memorial Day 10 am - 8 pm

Summer hours starting June 4th:
 Mon-Sat 10 am - 9 pm • Sunday 1 pm - 9 pm

- FAMILY OWNED AND OPERATED -



Softball Tournament

The Arpin Lions sponsor an annual Softball Tournament on Labor Day Weekend, with games beginning Friday night and continuing thru Labor Day.



ARTS COUNCIL

Your Performing Arts Connection

1040 8TH STREET SOUTH, SUITE 101, WISCONSIN RAPIDS

OFFICE HOURS ARE 10:00-2:30 MONDAY – THURSDAY

WWW.SAVORTHEARTS.COM | 715.424.2787

**CHECK OUT OUR
 2024/2025
 PERFORMANCE
 SEASON ON OUR
 WEBSITE!**

Cool vibes, hot entertainment!



Touching Lives and Securing Futures since 1883.

Family, future, quality of life. These are values we all share. Together we can celebrate the good things in life and continue to make a positive impact on the lives of others and our community.

Scott S. Paterick,
FICF, LUTCF, ChFC®, CLU®

P.O. Box 422

Wisconsin Rapids, WI 54495

B 715-424-1873,

scott.s.paterick@mwarep.org

reps.modernwoodmen.org/spaterick

Modern Woodmen

FRATERNAL FINANCIAL



Life insurance | Retirement planning
Financial services | Member benefits

SARATOGA SOLAR PROJECT

PROUDLY SOURCED WISCONSIN SUNSHINE



 Saratoga Solar Project | 715.204.3148 | SaratogaSolarProject.com

SAR-PH1768-03082024

DISCOVER

Auburndale

Welcome To The
AUBURDALE MUSIC FEST

Auburndale Music Fest 2024

Three days of music, games and rides, softball and volleyball tournaments, plenty of food and fun for all! This event is sponsored by the Auburndale Park Association and is held at the Auburndale Village Park.

The 2024 dates for the Auburndale Music Fest are June 21-23. Events will start Friday evening with softball and volleyball tournaments, old car cruise and fireworks at dusk. Live music will start late in the afternoon and go until midnight featuring some of the best variety of music in the area. Saturday festivities will start early with a dairy breakfast at 7 a.m., sponsored by the FFA Alumni, at the park shelter house. A car show will begin at 8 a.m. Other events are scheduled throughout the day, check the website for further info. Live music will again start late in the afternoon and go until midnight featuring some of the best variety of music in the area. There will be over 25 craft sales, kid's games and rides and plenty of food throughout the weekend. Sunday's events include a parade down main street at 11 a.m., championship softball and volleyball games, craft sales, kids rides and games, a Chicken Dinner which starts at 11 a.m. and live music from noon until 3 p.m. Free admission all day, every day. For more information, go to www.auburndaleparkassociation.org.



Style

PAUL GRÖSS
JEWELERS
Wisconsin Rapids





A Place You Can Get Lost In... And Enjoy It!

ANTIQUE MALL / CONSIGNMENT SHOP / SPORTING GOODS



ULTIMATE HUNTING & FISHING SPORTS SHOP

HOME DÉCOR, JEWELRY, CRAFTS & COLLECTIBLES

- **New/Used Guns**
- **Ammo • Furniture**
- **Antiques**
- **Unique Gifts**

**MONTHLY SALES
UP TO
75% OFF**

**Gift
Certificates
Available!**

*A Great
Shopping
Experience For
Everyone!*

**TUES-FRI - 9AM-6PM
SAT - 9AM-5PM
SUN - 11AM-5PM
CLOSED MONDAYS**

**264 WEST GRAND AVE • WISCONSIN RAPIDS • 715.424.1111
THETRADINGPOSTLLC.COM • FACEBOOK.COM/TRADINGPOSTLLC**

248305

DISCOVER

Grand Rapids/Kellner

Grand Rapids is the third largest community in Wood County, and one of the safest towns in Wisconsin. Home to Lake Wazeecha and South Wood County Park which offers hiking, bicycling, fishing swimming, disc golf, picnics, camping, and boating.



Kellner Cornfest 2024

Always the 3rd Weekend in August. Come join in the fun with a parade, flea market, games, food vendors, and music in beautiful downtown Kellner.



**KELLNER
CORN FEST**

PARKS in Wood County

For more information on the parks in Wood County, visit www.woodcountywi.gov/departments/parks/

Dexter Park and Lake Dexter

Nepco Lake County Park

North Wood County Park

Powers Bluff Park and Winter Recreation Area

Richfield 360 Acres

Wisconsin State Firefighters Memorial

www.wsfm.org/Memorial-Park/

South Wood County Park Lake Wazeecha

Wood County ATV Area

Wood County Rifle Range

Snowmobile Trails

VOTED TOP 10 FISH FRY IN WISCONSIN!



#1 IN WOOD COUNTY
#1 IN WISCONSIN RAPIDS
SINCE 2001!

1204 80th Street S, Wisconsin Rapids,
WI 54494

715-423-8884

KELLNER INTERNATIONAL



BAR & GRILL

Kellner, WI

359600



CHAT-R-BOX CATERING

Veteran Owned and Operated
 Heated and Refrigerated Delivery Trucks
 Call Kathi to schedule your next event
 (715) 570-0285
 3821 80th Street South, Kellner, WI
<http://www.chatrboxcatering.com>



THE KELLNER HOUSE

Vacation Rental
 Located on the ATV/UTV Trails
 3911 80th Street South
 In Beautiful Downtown Kellner
 4 miles East of Wisconsin Rapids
 Call Kathi (715) 570-0285
<http://www.thekellnerhouse.com>



KELLNER CAFE

3821 80th St S - Downtown Kellner
 (715) 712-3393
 Cafe Hours Monday Closed
 Tues, Wed, Thurs 8am - 2pm
 Friday 8am-8pm Fish Fry Starts at noon
 Sat 8am-2pm
 Sunday Breakfast Buffet 9am-noon
 Dine In and Carry Out



DISCOVER

Marshfield



From its early days as a Hub City, when railroad traffic crisscrossed the state, Marshfield has become a city of diverse economic activities. Marshfield has a long medical tradition going back to 1916 when six doctors formed the Marshfield Clinic. This has evolved into a world-class medical facility serving all of northern Wisconsin. Marshfield is also home to Mid-State Technical College and a two-year campus of the University of Wisconsin. From its early days, Marshfield was a city guided by a progressive vision and it continues to be forward thinking.

POINTS OF Interest

Chestnut Avenue Center for the Arts

Marshfield's center for performing arts, literary arts and visual arts. The Center is located in a historic church building at the corner of 2nd and Chestnut Avenue, downtown Marshfield.

Helen Connor Laird Fine Arts Building

Home to the Helen Connor Laird Theater, Gallery 450 and the UW Box Office. Events are held at the Helen Connor Laird Theater including, concerts, productions, films and lectures. Check their website for upcoming events marshfield.uwc.edu/campus/arts.

Marshfield Motor Speedway

Marshfield Motor Speedway brings high-speed asphalt racing to central Wisconsin. The half-mile oval track features Super Late Model action on Saturday nights from late April through September.



World's Largest Round Barn

The round barn was built in 1916. The barn continues to house exhibitors' animals at the fair every year. It is also used throughout the year for a variety of community events.

AREAS FOR Recreation

Tree-lined streets offer shade in the summer, fragrant blossoms in the spring and colorful displays in the fall. Expanding networks of bicycle and walking trails traverse the city and parks offer abundant recreational opportunities. Feeding the ducks at Wildwood Park and Zoo is a favorite activity for all ages. Ball diamonds, tennis courts and swimming pools encourage activity and the Marshfield Area YMCA offers many sessions for members and non-members. The Continuing Education Department of the UW-Marshfield/Wood County and the Marshfield Area Parks and Recreation Department provide classes and activities for toddlers to seniors.

JuRustic Park

JuRustic Park, M222 Sugarbush Lane, is a display of ancient extinct creatures that inhabited the nearby McMillan Marsh during the Iron Age. Exhibitions range from small six-inch spiders and mosquitoes up to 45-foot, 4,000-pound flying dragons.

Open May through October 10 a.m. to 4:30 p.m. (4 p.m. after Labor Day). Call 715-387-1653 during other months.



Photo courtesy of Jurustic.com

New Visions Gallery

Exhibits change every six to eight weeks. Located in the lobby of Marshfield Clinic, New Visions Gallery features art from regional, national and international artists. The gallery also maintains the Robert and Barbara Bromberg Collection.

UW-Marshfield/Wood County Arboretum

The trails that wind through the 20-acre arboretum and the south and west ends of the UW-Marshfield/Wood County campus are open to the public for walking, cross-country skiing and nature study.

Upham Mansion

The Upham Mansion was built in 1880 by former Wisconsin Governor William Henry Upham. The North Wood County Historical Society makes its home in this restored mid-Victorian mansion, which contains many of the Upham family's original furnishings and features monthly exhibits. A visitors' favorite is the Pie and Ice Cream Social held each year on the grounds of Upham Mansion as part of Marshfield's Dairyfest celebration in June. Upham Mansion is open Wednesdays and Saturdays from 1:30 p.m. to 4 p.m.

Wildwood Park & Zoo

Hosts a variety of animals and birds from North America. Featured exhibits include mountain lions, timber wolf, elk, bison, whitetail deer, bald eagles and Kodiak bears.

Cranberry Blossom Festival

June 20-23, 2024

Four Days of Family-Friendly Fun!

Carnival - Arts & Crafts - Music - & More!



www.blossomfest.com  @BlossomFest

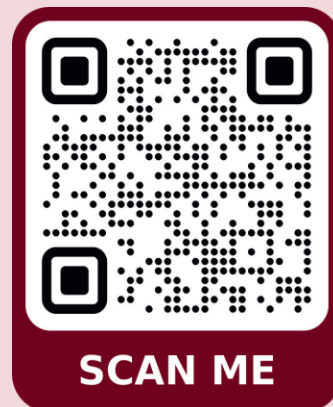
Adventure awaits in the Wisconsin Rapids Area

- FIND FUN THINGS TO SEE AND DO
- ABUNDANT RECREATION
- VARIETY OF AFFORDABLE LODGING
- DELICIOUS LOCAL FLAVOR
- UNIQUE SHOPS & ATTRACTIONS



VISIT WISCONSIN RAPIDS

www.VisitWisRapids.com





Central Wisconsin State Fair Plans 2024 Season

The Central Wisconsin State Fair in Marshfield emphasizes the region's unique business and the uniting of family, friends and community. Although the fair is set in Marshfield, it draws people from throughout the county and beyond. With carnival rides, a mouth-watering array of "fair food," and entertainment for everyone in the family, the Central Wisconsin State Fair has it all – animals, kids, music, performers and exhibits from many individuals, businesses and organizations.

The Junior Fair 4-H exhibitors and fair entries from exhibitors of all ages continue to evoke the sights and sounds of the traditional county fair. We celebrate the harvest, enjoy a good-spirited competition for ribbons and admire the handiwork of children and adults. As always, in addition to the traditional favorites, many new entertainments and activities are being planned for the coming year.

Popular entertainers perform each night in the grandstand, as fair-goers thrill to their favorite sounds, whether country or rock. At press time, the line-up for 2023 had not been finalized, but the fair's website will list the entertainment schedules as they become available.

The Central Wisconsin State Fair continues to pay tribute to its agricultural roots even as it grows and serves new audiences. The Central Wisconsin State Fair begins on Tuesday, August 20 and continues through Sunday, August 25.

Be sure to stay up to date on entertainment and event schedules, go to the Central Wisconsin State Fair website www.centralwisconsinstatefair.com/ or follow them on Facebook.

MARSHFIELD EVENTS & FESTIVALS

For complete and detailed listings of all Marshfield area events, visit the website of Visit Marshfield at visitmarshfield.com or Main Street Marshfield, mainstreetmarshfield.com

ANNUAL GEM, MINERAL, FOSSIL & JEWELRY SHOW

May 4-5 • 10 a.m. - 5 p.m.
Marshfield High School Fieldhouse

DAIRYFEST 2024

May 31 - June 1
Marshfield's salute to the dairy industry, with fun for all. Mayor's breakfast, picnic in the park, parade, carnival, 125 arts and crafts vendors, food, beer garden, entertainment. Arts and crafts booths at the fairgrounds.

ZOOFEET

June • 11 a.m. - 2 p.m.
Wildwood Park and Zoo
Come and join us for music and fun with the zoo critters! See website for full details, ci.marshfield.wi.us/visitors/wildwood_park_and_zoo/

FABULOUS FOURTH OF JULY CELEBRATION

July 4 • Marshfield Fairgrounds Park
Family friendly activities beginning at 4 p.m., food, inflatable fun and a children's entertainer. Fireworks at 10 p.m. Sponsored by Festival Foods.

HUB CITY DAYS

July 25-27 • Downtown Marshfield
mainstreetmarshfield.com/events
Join us for a weekend of fun! Events include Hub City Days Duathlon, Food & Craft Vendors, Brew Fest, Car Show, Beer Garden, Hub City Hoops 3 on 3 Youth Basketball Tournament, and a Street Dance featuring a live band.

CENTRAL WISCONSIN STATE FAIR

August 20-25
centralwisconsinstatefair.com
The Central Wisconsin State Fair in Marshfield will include a great new musical lineup and popular attractions.

FALL KICKOFF IN MARSHFIELD

TBD
Oak Avenue Community Center
Over 50 vendors and crafters attending this family-friendly event.

32nd ANNUAL MAPLE FALL FEST

September 14-15 • Wildwood Park
Maple Fall Fest is known as "the" place to find some of the best handmade art and craft items in the Midwest, with over 150 vendors. Add in Amish specialties, a wonderful assortment of food vendors, our famous potato and traditional pancake breakfast, Kid's Zone, Maple Village, Beer Garden, entertainment throughout the weekend, a Bike Tour, and much more ... You won't want to be anywhere else over the weekend!

OKTOBERFEST AT THE PLAZA

TBD
Features live music, food, and of course hand-crafted Oktoberfest micro brews from Blue Heron Brewpub!

KEEP - KIWANIS ENORMOUS EQUIPMENT PLAYGROUND

Saturday, October 5 • 10 a.m. - 4 p.m.
Marshfield Fairgrounds Park
Activities for little hands to create and take home, explore heavy equipment, farm equipment and vehicles brought in by local businesses. Food, beverages & souvenirs available.

HALLOWEEN: FALL BEER WALK

October 26 • 5-8 p.m.
Downtown Marshfield
Sample seasonal beers and shop your pumpkin spice-lovin' heart out as you enjoy the autumn atmosphere in Downtown Marshfield.

MAIN STREET HOLIDAY PARADE

November 21 • Downtown Marshfield
Come catch the spirit of the holidays and join us for our annual holiday parade. The parade starts at 6:30 p.m. and goes from 2nd Street to 9th Street. Join us afterwards for cookies, hot cocoa and SANTA at the Holiday Inn!

ROTARY WINTER WONDERLAND

November 22-December 31
Daily 5-9 p.m.
When it's time to break out the holiday spirit, it's time to head over to Rotary Winter Wonderland at Marshfield's Wildwood Park & Zoo. From Nov. 24 through the end of December the Zoo glows and twinkles with over one million LED lights, featuring animated, walk-and-drive-through displays, Santa's Village, Nativity Scenes, holiday music and much more.

Marshfield hosts Hub City Days Car & Bike Show

The Hub City Days Car & Bike Show takes place in Marshfield's Downtown on Central Avenue each year. The Hub City Days Car Show spans over 10 city blocks, features over 500 car/bike entries, a live DJ, kids games, tons of door prizes, free t-shirts for veterans, veteran appreciation raffle, kids-only raffle, and one featured exhibit.

Registration is typically free with a suggested donation of a non-perishable food item to benefit the United Way programs. Car show entries can look forward to more than 80 trophies and bonus awards announced at the end of the show.



Checking out what's under the hood during Hub City Days.
Hub City Times photo



*South Wood County
Historical Museum*



swch-museum.com

540 3rd Street South Wisconsin Rapids, WI 54494 • 715-423-1580

Exhibition Season -
April 2nd - September 1st

Traveling Displays

"Wisconsin's John Muir"
April 2 - May 30

"Journey Stories"
June 2 - July 31

"World War I and America"
August 1 - 29

Events

Ice Cream Social:
June 22nd from 1-3 pm

Christmas Tree Walk:
First two weekends of December

359725



HOME & TOWN PHARMACY and *Boutique* More than Just a Pharmacy

Gift Shop & Boutique • Home Décor • Natural Products • Seasonal Items



1000 E. Riverview Expressway, Suite 150
Wisconsin Rapids, WI
Monday - Friday 9-6 • Saturday 9 - 1
715-712-0870

357837

Marshfield Wildwood Zoo

608 W. 17th Street, Marshfield

Wildwood Zoo is believed to have been established unofficially sometime after 1904. It began when some utility workers began to care for two black bears. In 1910, before a zookeeper was hired, it became the Mayor's job to care for the animals at the zoo. In 1923, Wildwood Park got its name and the zoo was officially dedicated on July 27, 1930.



"Kodiak Bears" Munsey & Boda

WILDWOOD ZOO HOURS

April 1 - Memorial Day: Daily 7:30 a.m.-6 p.m.
Memorial Day - Labor Day: Daily 7:30 a.m.-7:30 p.m.
Labor Day - October 31: Daily 7:30 a.m.-6 p.m.
November 1 - March 31: Daily 7:30 a.m.-2:30 p.m.

For more info, visit: ci.marshfield.wi.us/visitors/wildwood_park_and_zoo/

The Zoo is closed on Easter, Thanksgiving, Christmas Eve, Christmas Day & New Year's Day.

WENZEL FAMILY PLAZA

www.facebook.com/wenzelfamilyplaza

The Wenzel Family Plaza is a year round community square and event hub in the heart of Marshfield. Many generous private sponsors have made this space possible in partnership with public visioning and research on similar public spaces in Wisconsin and beyond.

Summer of 2018 marked the first round of programming in the space, with people of all ages making use of the area's picnic tables, benches, and water feature when concerts and festivities were not in play.

Programming the plaza is an important goal of the Wenzel Family Plaza Committee, which is made up of contributors from the City of Marshfield, Marshfield Convention and Visitors Bureau, Main Street Marshfield, MACCI, and Chestnut Center for the Arts. With the assistance of a new plaza coordinator, we look forward to seeing this beloved destination filled with activity and events for all, year-round.



MARSHFIELD PARKS AND RECREATION DEPARTMENT

Enjoy the beauty of nature in all seasons, courtesy of the Marshfield Parks and Recreation Department. In addition to the 18 city parks and recreation areas, there are numerous walking and bicycle trails, with several park and fairground buildings and shelters that may be rented for private parties and receptions. To ask about any date or facility, call 715-384-4642, extension 0.



INSIDE or OUTSIDE Your Home!...

Sternweis & Sons

MARSHFIELD, WI

BLOCK DIVISION **715-384-4870** 400 E. Arnold
 REDI-MIX **715-384-8995** 11397 Wren Rd.

SINCE 1972

We provide you with a LOT more than concrete!

OUTSIDE:



FIRE UP THE GOOD LIFE WITH A CHICAGO BRICK OVEN

- ★ Poured Concrete
- ★ Landscaping Paving Block
- ★ Retaining Walls
- ★ Exterior Brick
- ★ Landscaping Stones
- ★ Silica Sand
- ★ Concrete Block
- ★ Pre-Mixed or Bag Cement
- ★ Manufactured Stone
- ★ Concrete Sealers & Patches
- ★ Chimney Supplies
- ★ Retaining Walls & Timbers
- ★ Concrete Pumping Services
- ★ Do it Yourself Outdoor Kits

INSIDE:

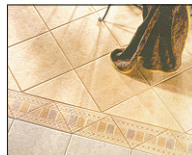


CERAMIC FLOOR & WALL TILE

Advertised products are available at our Block Division.

KOZY HEAT™
 wood & gas fireplace systems

- Stone & Brick Veneer
- Quick to install
- Economical



357059



Kiwanis Enormous Equipment Playground

SATURDAY, OCTOBER 5, 2024 • 10:00 am-4:00 pm

Marshfield Fairgrounds Park
513 East 17th Street, Marshfield

RAIN OR SHINE!

Why Would I Want to Go?

- **Indoors:** Activities for little hands to create and take home
- **Outdoors:** Explore heavy equipment, farm equipment and vehicles brought in by local businesses
- Food, Beverages & Souvenirs Available
- Free Parking

Admission \$6 for ages 13 & up \$3 for ages 1-12




Kiwanis

KIWANIS CLUB OF MARSHFIELD

Visit facebook page:
Kiwanis Club of Marshfield

Proceeds from KEEP Event will benefit children's programs in the Marshfield Area.

357060



The Sports Den has been serving Marshfield since 1975!

We offer quality products and service in bicycles, cross country and downhill skis, snowshoes, snowboards, swimming, skateboards, and carry a large selection of outdoor clothing. The Sports Den is also Central Wisconsin's E-bike headquarters with E-bikes from Specialized, Electra, Haro and Trek on the sales floor at all times!

Bicycles
Apparel, Accessories and Parts

Disc Golf
Skateboards

Snow Sports - Clothing, Skis, Snowboards, Bindings, Boots, Poles, Helmets, Goggles

Exercise Equipment

Sports Den bike service

When you bring your bicycle to us for maintenance or repair, our friendly, professionally trained technicians will assess your bike's needs and provide you with a free, no-obligation estimate. Whether your bike is in need of a minor adjustment or a major overhaul, we promise that your ride is in good hands.

📍 **1202 S Central Ave, Marshfield, WI 54449**
📞 **(715) 384-8313** 🌐 **thesportsden.net**

335659

QUALITY PRINTING

"Getting Your Words Out"



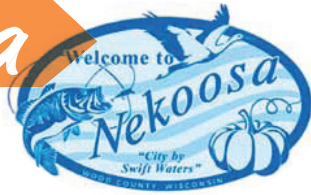
www.wamink.com
Apparel for the hero in you!

3515 8th Street South | Wisconsin Rapids WI 54494

715.423.7440

www.qpprinting.com

design · print · apparel · and more!



The City of Nekoosa is a small residential community with a strong sense of place. What began as a fur trapping and trading community evolved into sawmills and then paper mills. The river continues to play an important role in the lives of Nekoosa's residents and visitors. Nekoosa is the "northern gateway" to two of the state's largest bodies of water, Petenwell Flowage and Castle Rock Flowage. A boat landing on the south side of Nekoosa, on Point Basse Avenue, offers easy access for fishing and boating. Scenic Riverside Park, near Nekoosa's business quarter, is home to several large events including Walleye Days in the spring. Be sure to mark your calendars and come enjoy the famous GIANT Pumpkin Fest in the fall at the Nekoosa Business Park.



Walleye Days

Area anglers are invited to compete for cash and prizes. The Nekoosa Area Business Association, Inc., Walleye Days Committee will sponsor the Annual Walleye Days Fishing Contest March 23 - April 14. The Wisconsin River has produced many trophy-sized walleyes since this annual contest began and sizes were recorded.

Participants are encouraged to "catch and release." All fish must be caught on the Wisconsin River, between the Nekoosa Dam and the Petenwell Dam and must be alive when registered.

There are no entry fees except for the Jim Freeman Memorial Charity Challenge on April 13, at the Jim Freeman Boat Landing, by the Nekoosa Municipal Building. You can purchase raffle tickets and buttons at various Nekoosa businesses.

The Kids Contest is April 14 at Jim Freeman Boat Landing and is open to boys and girls. Good luck and great fishing!

For more information, call 715-302-0345 or find them on Facebook.

Nekoosa Area Easter Event

Saturday before Easter weekend

Join the Nekoosa Easter extravaganza for Breakfast with the Bunny, Easter Craft, Arts & More Show, Bunny 5k Run and Egg Hunt. Have a lovely breakfast with the Easter Bunny from 8:30 a.m. – 10:30 a.m. at the Retirement Community of Nekoosa. Bring your camera to take photos to remember with the Easter Bunny. Get hoppin' during the Bunny Run 5K Run/Walk. Start the journey at Goodfella's Pizza head down the bike path towards ERCO Worldwide and back the same route. Get your Easter and spring decor at the Arts, Crafts & More Show. Can't miss the traditional Easter Egg Hunt at Alexander Middle School. Easter Egg Hunt age groups include 4 and under, 5 to 7, and 8 to 10 years old. The Retirement Community of Nekoosa residents generously fill over 3,000 eggs between each age group.

Find the Nekoosa Area Spring Easter Event 2023 on Facebook.

Pioneer Festival

2nd weekend in June

The Point Basse Pioneer Festival is the premier event at Historic Point Basse. The 2-day event is open to the public and takes place the second full weekend in June. Visit the site and participate in the activities of the day. Enjoy the demonstration of period crafts, eat period foods, enjoy period entertainment. The festival offers fun for the whole family. Enactments, walking tours, music, ethnic dancing. Be a judge in the Iron Chef cooking contest. Purchase a bowl for \$5.00 and then sample each chef's entry. Judge which one is the best and then take the bowl home as a souvenir. Saturday, 10 am to 5 pm, Sunday, 10 am to 4 pm. Adults \$5; Students \$2; Pre-schoolers are free. Historic Point Basse, 300 Wakely Road, Nekoosa. For further information call 715-459-1722. For a complete calendar of events, go to www.historicpointbasse.com



Rendezvous in the Park ~Dinner by the River~

June 19 • July 17 • August 21

Rendezvous with us at the Riverside Park in Nekoosa! Make it your casual business meeting spot, family summer get together, or a dinner date next to the beautiful Wisconsin River. This event takes place the third Wednesday of June, July, and August from 5:30 to 7:30 p.m.

Nekoosa Hometown Family Christmas

First Saturday in December

A great holiday event to kick off the season! Entertainment includes breakfast with Santa, kids story time, cookie decorating, horse drawn wagon rides, holiday arts and crafts, Nekoosa Fire and Ambulance Department open house, holiday parade, and fireworks. For more information, visit cityofnekoosa.org/event/nekoosa-hometown-christmas.

Nekoosa GIANT Pumpkin Fest

All pumpkins great and small are welcome at the October 2024 GIANT Pumpkin Fest, but it's the GIANT pumpkins that get all the attention. Growers from across the Midwest travel to Nekoosa to weigh their giant pumpkins for prizes and to be eligible for international competition. Weigh-ins for other fall produce, too, including squash, tomatoes, long gourds, cantaloupe and watermelons.

A craft show, flea and farmers' market, antique tractor show, car show and free children's games round out the event. Other popular features include the GIANT pumpkin drop and great pumpkin bake-off.

The annual Nekoosa GIANT Pumpkin Fest takes place on the first full weekend in October at Riverside Park in Nekoosa, Wisconsin. The park is located on Highway 73 along the beautiful Wisconsin River. There is an admission fee. For more information on this year's festival, visit nekoosagiantpumpkinfest.com.



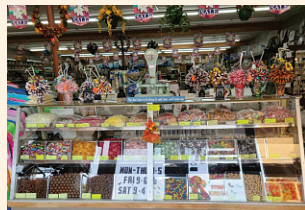
Nekoosa

Phone (715) 886-5500

357870



ONE of the LAST TRUE WI DIMESTORES!



- Toys • Keys • Housewares
- Seasonal Items
- Kitchen Spices and Much More!

Find us at beaversvariety.com

410 Market Street, Nekoosa WI • 715-886-4371

312045

BADGER MARINE

SALES — SERVICE — PARTS

- COMPLETE MARINE SERVICES
- MERCURY OUTBOARD
- VIAGGIO & FLAGSHIP PONTOONS
- LUND ALUMINUM BOATS
- SHORE STATION & HOISTS
- TRAILERS
- SAFETY GEAR
- ACCESSORIES
- WATER SPORTS & MORE

Large Selection of High Quality Tractors and Mowers!

715 Hwy. 73 Nekoosa

(715) 886-3308

www.badgermarine.com



357885

Stop in and see us today!





For
Nekoosa

**Nekoosa Easter Egg Hunt
& 5K Run/Walk**

The Saturday before Easter Weekend



Nekoosa Walleye Days

Contest begins in March
and runs into April



Summer Civic Picnic

Last Saturday in June



**Nekoosa Hometown
Christmas**

Events every weekend in December

Riverside Lights, Santa Visits & Craft Show



Visit www.fornekoosa.org for more details

DISCOVER

Pittsville



Pittsville is located midway between Marshfield and Wisconsin Rapids on Highway 80. Lake Dexter, just south of Pittsville, welcomes visitors for camping, fishing, boating, swimming and picnics.

AREAS FOR Recreation

Riverside Park, one block west of the business district, meanders along the Yellow River and provides shelters for gatherings and celebrations. The park's improvements include a playground area, baseball diamonds and tennis/ basketball court.

4th of July Celebration

On July 4, the Pittsville Annual Community 4th of July Celebration, sponsored by the Pittsville Lions Club and the Pittsville Legion, includes a parade, mammoth fireworks display, carnival rides and games for kids, food stands and a beer garden.

Pittsville Area Foundation for the Arts

Pittsville's Performing Arts Center, located at the high school, is home to school and community performances as well as professional entertainments. Visit their website for more information. www.pittsville-performing-arts.org



Splash of Red Cranberry Tours

2024 tours are held in September and October. Call 715-884-6412 for updated dates available.

The Pittsville High School FFA sponsors Splash of Red Cranberry Tours in the fall. The FFA /FFA Alumni are giving cranberry tours to help pay for student scholarships, trips and other member activities.

Tours meet at the Pittsville School Auditorium at 9:15 a.m. Tours will include; touring a current marsh under construction, new beds not yet in production, producing beds with the tourists given the opportunity to pick fresh fruit from the vine, as well as observing the harvest, testing, cleaning and freezing of the berries.

The cost of the tour is \$25 per person. School tours are also available for a discounted price (this does not include the lunch option). All tours include a cranberry treat, juice, and fresh cranberries for each guest to take home. Reservations are a must to let the FFA know how many are coming. Please call 715-884-6412.

Visit sites.google.com/pittsville.k12.wi.us/cranscience



Pittsville Area Historical Society

The Pittsville Area Historical Society owns and operates a museum at 8256 Monroe Street. Built in 1899, it was originally a Methodist church. The museum property also includes Scranton School, restored to look as it did in the mid 1940s. The school hosts area 3rd and 4th graders every year for "A Day at Scranton School."

Flower gardens and landscaping are maintained by Wood County Master Gardener Volunteers. Museum volunteers are restoring the Powwow ticket booth to be filled with displays about the Pittsville Powwow and Riverside Park. The steeple from St. Joachim's will be restored as a gazebo.

The museum is open most Thursdays from May through September, 9 a.m.-noon and 1-3 p.m. Thursdays are work days for society members. The museum is also open the last Sunday of May, through September from 11 a.m.-3 p.m. and by appointment. For more information, visit www.pittsvilleareahistoricalociety.org

CHIPS HAMBURGERS

1330 West Grand Ave., WIS. RAPIDS
 "Home of the Champ" Charbroiled Burgers, Golden French Fries
 Open 10:30 am daily

DISCOVER

Port Edwards



The settlement that became Port Edwards was originally called French Town. The town's founder, John Edwards, had the vision to dam the Wisconsin River to supply power for a sawmill. The original dam was completed in 1840 and the surrounding pine forests were fed into the sawmills for white pine lumber. At the beginning of the 1900's, the lumber mill was converted to a newsprint paper mill. Today, Port Edwards thrives on the preservation of the area's history, its beauty and an abundance of recreational opportunities. Port Edwards is the perfect place to stop for a picnic or snack while biking between Wisconsin Rapids and Nekoosa along the Wisconsin River.

AREAS FOR Recreation

Riverside Park, one block west of the business district, meanders along the Yellow River and provides shelters for gatherings and celebrations. The park's improvements include a playground area, baseball diamonds and tennis/ basketball court.

The Alexander House

A center for art and history, the Alexander House is a combination art gallery and historical museum. A meeting room is available at no charge for local non-profit organizations.



1131 Wisconsin River Drive, Port Edwards.

Open Tuesday, Thursday and Sunday, 1-4 p.m. No charge.

www.alexanderhouseonline.org.

Port Edwards Village-Wide Garage Sale May 2024

Annual village-wide garage sale from 8 a.m. - 3 p.m.

Visit www.facebook.com/villagewidegaragesaleport



The Alexander House Center for Art and History is located on the banks of the beautiful Wisconsin River in Port Edwards, Wisconsin.



**1131 Wisconsin River Drive, Port Edwards WI
715-887-3442**

Open 1:00-4:00pm on Sunday,
Tuesday & Thursday, or by appointment.

Admission is FREE

Find us on Facebook at Alexander House Center for Art and History or visit our website www.alexanderhouseonline.org

262292

Nekoosa Port Edwards State Bank



est. 1913

WWW.NPESB.BANK
(715) 886-3104

307957

Member
FDIC





SERVING BREAKFAST & LUNCH

YOUR NEIGHBORHOOD DINER

OPEN

TUESDAY - SUNDAY: 7AM - 2PM

SERVING DELICIOUS FISH FRY ON FRIDAYS FROM 11AM - 8PM

SERVICES

- DINE IN
- TAKE OUT
- GROUP CATERING
- BANQUET/COMMUNITY ROOM

221 MARKET AVENUE
PORT EDWARDS, WI 54469

715.887.2233

@ELCAFEDINER

MENU ITEMS

- OMELETTES
- SKILLETES
- BISCUITS & GRAVY
- AVOCADO TOAST
- SANDWICHES
- MELTS
- BURGERS
- WRAPS
- SALADS
- APPETIZERS
- SOUPS
- HOMEMADE PIES
- DESSERTS & CINNAMON ROLLS
- + MUCH MORE!

EL CAFE'
OFFERING
BREAKFAST
ENTREES
YOU WON'T FIND
ANYWHERE
ELSE!

DISCOVER

Rudolph

Rudolph, seven miles north of Wisconsin Rapids, at the intersection of State Highway 13/34 and County Highway C, was the second town established in Wood County. Rudolph the Red-Nosed Reindeer welcomes visitors to Rudolph throughout the year, but the town of Rudolph was actually named after the son of an early settler, Rudolph Hecox.



AREAS FOR Recreation

Baseball diamonds attract participants throughout the summer months and the Rudolph Community Park offers a shelter with running water and electricity. A skating pond invites skaters during the winter months and a sign to "Follow the Yellow Brick Road" draws walkers to the nature trail in all seasons.

Annual Rudolph Old Tractor Club Show Second Saturday in August

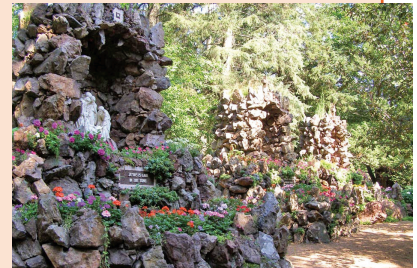
Rudolph Community Park. Free registration, beginning at 7 a.m., show from 9 a.m. to 6 p.m. The day's events include a tractor parade, dyno to determine a tractor's horsepower, threshing demonstration, swap meet. Antique garden tractor, snowmobile and hit and miss engine displays. Petting zoo and barrel rides for kids. Tractor competition and games, raffles, food. Free admission. For more information email rudolphtractorclub@gmail.com

Rudolph's Country Christmas First Saturday in December

A family Christmas festival. Activities include children's games, a petting zoo, horse-drawn wagon rides, train rides, visits with live reindeer and a craft sale. Be sure to look for the yearly commemorative post card. A special one-day, hand-stamped pictorial postal cancellation from the U.S. Postal Service will be available from 9 a.m. to 4 p.m. The day concludes with a children's musical entertainment program, followed by a lighted Christmas parade down Main Street at 5:15 p.m. For more information, go to www.rudolphcountrychristmas.org

Grotto Gardens and Wonder Cave On the grounds of St. Philip's Parish

Constructed of native stone, the Grotto Gardens are bright with flowers during the summer months. Paths meander over five acres and a picnic area invites relaxation and reflection. Religious and patriotic scenes are set among the stones, plants and trees. The gift shop and Wonder Cave are open Memorial Day thru Sept. 30: 11 a.m.-4 p.m. and Oct 1-31: 11 a.m.-3 p.m. There is no charge to visit the Grotto Gardens. There is a nominal fee to tour the Wonder Cave.



Visit www.rudolphgrotto.org for more information.



VISIT OUR GALLERY

2024-25 EXHIBIT SCHEDULE - FREE ADMISSION

CELEBRATE RED // APR 16 - JUN 22, 2024

AUTHENTIC NATIVE AMERICAN ART & CULTURE // JUL 9 - AUG 22, 2024

UNEXPECTED: ART FROM FOUND OBJECTS // SEPT 10 - OCT 17, 2024

HOLIDAY GIFTS & ART FAIR // NOV 7 - DEC 19, 2024*

ARTISTS INVITATIONAL // JAN - MAR 2025

TAKE AN ART CLASS

IN 2023, WE OFFERED 70+ CLASSES!

WE'RE ALWAYS ADDING NEW OPPORTUNITIES TO OUR WEBSITE



OTHER OFFERINGS

OPEN POTTERY STUDIO, ARTIST GIFT SHOP,
MUSIC & LESSONS + SPECIAL EVENTS

CULTURALCENTERARTS.COM | 715-421-4598



2651 8TH STREET SOUTH | WISCONSIN RAPIDS, WI 54494

GIFT SHOP & GALLERY HOURS // TUESDAY - THURSDAY 10A-5P OR BY APPOINTMENT

*During our Holiday Gifts & Art Fair, open Saturdays 9A-1P

Melody Gardens Restaurant

Carry-outs
Available

Open at 6am daily
Breakfast, Lunch & Dinner
with a homemade touch!



We Make
Our Own Ice
Cream!

and Skateland



Call for Roller Skating Hours

1200 S. Oak Ave. Marshfield • 715-384-3326

www.melodygardensmarshfield.com

356799



~ Home Of ~
**Rudolph the Red Nose
 Reindeer, Rudolph
 Grotto and Wonder
 Cave, and Rudolph
 Country Christmas**



PO Box 185 • Hwy. 13/34 Rudolph, Wisconsin 54475
 715-435-3144
 Mon-Fri 8am - 5pm • Saturday 8am - 4pm

358821



**Truck • Cars
 Farm Equipment
 Repair
 Tire Sales & Service**
 Call **715-435-3331**



Truck & Auto

6948 Highway 34 • Rudolph
 Open: Mon.-Fri. 8 AM to 5 PM

358818

Al's
AUTO GLASS LLC

*Locally owned and operated.
 Repair and Replacement.*

 Find us on Facebook **715-572-2046**

358815

PATSY'S

1667 Main St., Rudolph
 715-435-4100

Let the Good Times Roll!

357921

little sprouts
 learning garden

**Licensed Childcare Center
 Open Year Round**

6:30 am - 5:30 pm
 Ages 1 year to 12 years
 Accepting WI Shares

6918 Knowledge Ave – Rudolph • **715-435-4747**

358823

**STEINLE
 STORAGE**



715-340-3552

Unit Sizes:
 10x20
 10x25
 10x30

6763 Hwy 34, Rudolph

358817

357914

DISCOVER

Vesper

Vesper lies between Wisconsin Rapids and Marshfield on Highway 186. Vesper has a village recreation park that unveils its secrets beyond the softball diamonds, tennis courts and volleyball courts. Bring your lunch, a good book or your camera to the well-kept garden area. Rest in the gazebo or venture across the quaint covered bridge over a small, babbling stream. The gardens are designed and maintained by the Wood County Master Gardener Volunteers. A walking path keeps close to the park boundaries and meanders through shady and sunny areas. A rustic path follows the old railroad bed. Water and bathroom facilities are available at the park along with a covered shelter with tables.



Lester Public Library of Vesper

The Lester Public Library of Vesper is a valuable community asset. The library director, staff and volunteers host a variety of programs for all ages. Visit the library for more information about frequent programming on a variety of topics.

The library offers an array of books, magazines, DVDs and public computers. A small meeting room is available for public use. Contact the Lester Public Library of Vesper, 715-569-4669 or email vespl@tds.net. Library hours are Monday and Tuesday 10 a.m. - 5 p.m.; Wednesday and Thursday 2-7 p.m.; Friday and Saturday 9 a.m. - noon; and closed Sundays. Visit vesperlibrary.org for more information.

Library Gardens

Designed and maintained by Wood County Master Gardener Volunteers. Four season gardens available for your viewing anytime. Programs on garden-related subjects are held at the library during the year. Contact the library for a schedule.



THE TOOL SHED
Tools • Tools • Tools

**Since 1981,
Our Reputation is to
find any special tool you
can't find anywhere else!**

We carry a large selection of power tools and accessories at great prices everyday!

Gift Certificates Also Available

Hrs:
Monday - Friday • 8 A.M. To 6 P.M.;
Saturday • 8 A.M. To 5 P.M.

927 Huntington Avenue,
Wisconsin Rapids, WI 54494
Phone (715) 423-5333
toolshed@charter.net

MAKITA - MILWAUKEE - CP - IR - BLACK & DECKER

HEARTLAND EQUESTRIAN CENTER
7510 Deer Rd, Custer, Wisconsin 54423

**FREE HORSE MANURE
WE LOAD - YOU HAUL**

**For Information
Contact -
Mark Long at
715-323-3666
Mark@heartlandec.com
Boarding Starts at \$375**

**Check Out
our Upcoming
Events**

RENT OUR LARGE FACILITY FOR YOUR NEXT EVENT!



2023-2024 MIDWEST WEST DIVISION CHAMPIONS



Riverkings GM/Head Coach, Paul Pechmann, had his eye on Nationals from day one. Under Coach Pechmann's direction the Riverkings finished the 2023-2024 regular season 34-7-7 and a Midwest West Division Title! The team has won the first and second round of the playoffs and have punched their ticket to the National Championships in Utica, NY!

In his inaugural season, Coach Pechmann built a winning program with all new players. This season is filled with a dozen returners from the 2022-2023 season, a new Assistant Coach and new players from Hungary, Czech Republic, Italy, England and Canada.

Coach Pechmann is an advocate for the community - you will find his players working with various charities and community programs throughout the year. He is also very successful in developing young men into leaders. Last season's successes included eight players receiving offers to advance to higher levels including NCAA D3, ACHA D1 colleges and Pro leagues in Europe. This year the Riverkings already have five players with multiple offers to play NCAA, ACHA and Pro in Europe along with guys being offered opportunities to play higher level Jrs next season.



**GM/Head Coach
Paul Pechmann**



3/9/2025

DISCOVER

Wisconsin Rapids

Wisconsin Rapids, the county seat of Wood County, is a consolidation of the two early towns of Grand Rapids and Centralia, the former lying on the east side of the Wisconsin River, the latter on the west. The Indians gave to this place along the river the name of “Ah-dah-wa-gam,” meaning the “two-sided rapids,” as the rapids here were divided by a great boulder. Wisconsin Rapids today offers a Midwestern charm and atmosphere while providing access to modern infrastructure and technology, abundant educational and cultural opportunities, a mix of retail establishments and restaurants and a stable business environment.



Central Wisconsin Cultural Center

Promotes regional arts activities, housing gallery exhibitions, lectures and classes. A pottery studio, piano lessons and workshops on writing, digital photography and watercolor painting are just some of the previous offerings. All gallery art exhibit receptions are free and open to the public.

Wisconsin Rapids Community Theatre

For over 30 years, WRCT has put on children’s productions, special theatrical productions, Broadway-type shows and workshops. Current performances are listed on the website, www.wrctheatre.org

AREAS FOR Recreation

The Wisconsin River plays an important role in the recreation of area residents and tourists. Boating, fishing, or a simple walk along the riverbank contributes to a much-needed connection with nature. Many lakes and thousands of acres of public land provide additional opportunities for outdoor recreation. The area offers abundant fishing and hunting opportunities in all seasons. Winter recreation possibilities include ice fishing, cross country ski trails, snowmobile trails and ice skating rinks. In the summer months, public golf courses continue to draw enthusiasts and growing miles of bicycle trails furnish safe routes for bicyclists. Many parks scattered throughout the city offer playgrounds, picnic areas, tennis courts, ball diamonds and swimming.

Performing Arts Center of Wisconsin Rapids

The Performing Arts Center, or PAC, on the Lincoln High School Campus, hosts a variety of performing arts events, including many professional productions. For a current schedule, go to www.wrps.org/community/pachome.cfm



Rapids Municipal Zoo & Petting Zoo

The Wisconsin Rapids Municipal Zoo is a small zoo with an interactive petting area, beautiful gardens, picnic area and playground. An enclosed building is available for the zoo and to rent for private parties. Open Tuesday through Sunday 10 a.m. to 6 p.m., Memorial Day through the end of August. No charge.

Arts Council of South Wood County

Arts Council of South Wood County was organized in 1976 as a nonprofit corporation to provide a variety of professional performing art forms for residents of all ages. The Arts Council also provides Arts in Education programs which enrich the lives of area students through performances, workshops and master classes with professional artists. Through individual contributions and corporate sponsors, the Arts Council is able to provide high quality programming and culturally diverse presentations. Visit savorthearts.com for upcoming events.

South Wood County Historical Museum

Permanent exhibits at the riverbank mansion of banker Isaac Witter feature the creations of Wisconsin Rapids native Grim Natwick (animator of Betty Boop and Snow White) and the history of cranberry growing in central Wisconsin. Open Memorial Day weekend through Labor Day on Tuesday, Wednesday, Thursday and Sunday from 1 p.m. to 4 p.m. www.swch-museum.com, 715-423-1580.



@ Ida's Sports Bar and Grill

@idassportsbar

1981 Lincoln Street, Wisconsin Rapids, WI 54494

(715) 421-2063

www.idassportsbarandgrill.com

359237

HOME RUNS, HOMETOWN PRIDE!



Join our summer collegiate baseball team for 36 action-packed home games filled with Major League Baseball talent, sizzling excitement, and unforgettable moments.



Our ballpark is more than just a field; it's a place where family fun meets heart-pounding action, with exciting promotions every night to keep you on the edge of your seat.



Visit Raftersbaseball.com to find out more Information!

LIBRARIES in Wood County

Wood County's residents are well served by six libraries.
For current hours, visit library websites.

ARPIN

LESTER PUBLIC LIBRARY OF ARPIN

8091 County E, Arpin
715-652-2273 • arpinpl.org
Hours: Mon. and Thurs. 3 - 7, Tues. 9 - 5, Wed. and Sat. 9 - 12, Fri. 9 - 5
Book club discussion group meets the 4th Monday of the month at 5:30 p.m.
Children's Story Hour held Wednesday morning at 10:30 unless noted.

MARSHFIELD EVERETT ROEHL MARSHFIELD PUBLIC LIBRARY

105 S Maple Avenue, Marshfield
715-387-8494
marshfieldlibrary.org
Hours: Mon.-Thurs. 9-8, Fri. 9-6, Sat. 9-5, Sun 1-5
Summer hours:
Mon. through Fri. 9-8, Sat. 9-5

NEKOOSA CHARLES AND JOANN LESTER LIBRARY

100 Park Street, Nekoosa
715-886-7879
nekoosalibrary.com
Hours: Mon. through Thurs. 9-7, Fri. 9-5, Sat. 9-12

PITTSVILLE

PITTSVILLE COMMUNITY LIBRARY

5291 Third Avenue, Pittsville
715-884-6500
pittsvillelibrary.org
Hours: Mon. 2-7, Tue. 9-5, Wed. & Thurs. 12-5, Fri. & Sat. 9-12

VESPER

LESTER PUBLIC LIBRARY OF VESPER

6550 Virginia Street, Vesper
715-569-4669 • vesperlibrary.org
Hours: Mon. and Tues. 10-5, Wed. 2-7, Thurs. 2-7, Fri. & Sat. 9-12
Book Club meets the 3rd Monday of the month at 6 p.m.
Handcrafts group with knitting, crocheting and other crafts meets Tuesdays at 1 p.m.
Storytime is on Tuesdays at 10:30 a.m.

WISCONSIN RAPIDS MCMILLAN LIBRARY

490 East Grand Avenue,
Wisconsin Rapids
715-422-5136
mcmillanlibrary.org
Hours: Mon. through Thurs. 9-8, Fri. 9-6, Sat. 9-5

WISCONSIN RAPIDS EVENTS & FESTIVALS

For complete and detailed listings of all area events, visit the website of the Wisconsin Rapids Area Convention and Visitors Bureau, visitwisrapids.com. Community organizations may access the website to list their special events.

A TOAST TO GREAT FUTURES BEER & WINE TASTING

TBD

Enjoy an evening of wine & beer sampling, appetizers, raffle baskets, and 50/50 raffles. Bullseye Golf Club, 2800 Ridgewood Trail, Wisconsin Rapids.

LUNCH BY THE RIVER

Thursdays, 11:30 a.m. to 1 p.m.

June through August

Lunch and entertainment on the banks of the Wisconsin River. Veterans Memorial Park. Each week is sponsored by a different business. Visit www.wisconsinrapidschamber.com/signature-events for more information

HISTORIC POINT BASSE PIONEER FESTIVAL

June 8-9

www.historicpointbasse.com
Visit the site and participate in the activities of the day. Enjoy the demonstration of period crafts, eat period foods and enjoy period entertainment under the big top. The festival offers fun for the whole family. Enactments, walking tours, music, ethnic dancing.

CRANBERRY BLOSSOM FESTIVAL

June 13-16

The festival is filled with "berry" fun events including, live music, a parade, arts and crafts, a carnival and of course culinary treats featuring Wisconsin's #1 fruit crop, the cranberry! check out the events schedule at www.blossomfest.com

WISCONSIN STATE SHOOT

July 9-14

Presented by Wisconsin
Trapshooting Association
www.witrapshooters.com

ANNUAL WISCONSIN STATE WATER SKI SHOW TOURNAMENT

July 18-21

Annual competition showcases Wisconsin's best water ski teams. South Wood County Park, Lake Wazeecha - Red Beach.
www.aquaskiers.org/wi-state

DOWNTOWN "GRAND" AFFAIR

September 8

www.wisconsinrapidschamber.com
Wisconsin Rapids celebrates the gorgeous autumn season with music, food, children's activities and more! All types of vendors are accepted including: arts and crafts, antiques, food and farm market produce.

REKINDLE THE SPIRIT

November 27

www.wisconsinrapidschamber.com
Rekindle your holiday spirit with us the day before Thanksgiving. Be part of the buy local, holiday parade celebration. Festivities include: Parade, Cookies & Cocoa at Locals on 1st, and Lighting of the Holiday Lights in Veterans' Park in Wisconsin Rapids.

WE CUSTOM MAKE YOUR IDEAS

We Install Zippers on all Your Summer Gear!



ALSO OFFERING:

- Custom Made Boat Covers
- Custom Boat Seat Covers
- Bimini Tops
- Replace Worn Boat Seats

Mid-State Upholstery & Canvas, Inc.

830 Whitrock Ave • Wisconsin Rapids

715-421-2182

357950

Wisconsin Rapids Rafter

The Wisconsin Rapids Rafter is a baseball team based in Wisconsin Rapids, Wisconsin that plays in the Northwoods League, a collegiate summer baseball league. The Rafter play home games at historic Witter Field. Visit northwoodsleague.com/wisconsin-rafter/ for the 2024 schedule.

Wisconsin Rapids Riverkings

The Wisconsin Rapids Riverkings is a Junior Hockey Team within the U.S. Premier Hockey League. Come watch the Riverkings heat up the ice at the South Wood County Recreation Center! Visit riverkingshockey.com for 2024/2025 schedule.

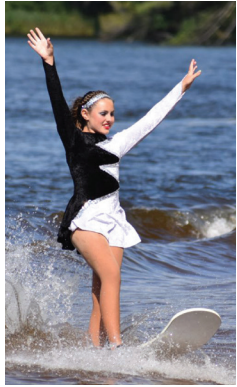
Wisconsin Rapids is host to state water ski show championships

Each year in July, the Wisconsin Rapids Aqua Skiers Show Team hosts the annual Wisconsin State Water Ski Show Championships, at Red Sands Beach Lake Wazeecha, South Wood County Park.

For over five decades, water ski teams from around the state entertain the crowd as they showcase their best acts on and off the water. Teams compete in three different divisions.

Individual competition from around the state of Wisconsin features swivel, freestyle jump, team jump, and strap doubles competition.

For more information, visit aquaskiers.org/wi-state.



Come out and try our NEW Summer Menu

Enjoy our
Band Lineup on
our Beautiful Patio
right on the
Wisconsin River!



1259 Anchor Landing,
Wisconsin Rapids, WI 54494 
715-423-0010 • anchorbaybarandgrill.com

357835



R|R RUSTIC REDEFINED BOUTIQUE



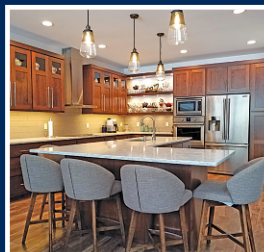
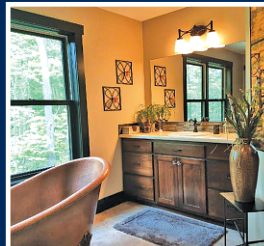
A Unique Boutique Shopping Experience
 4021 8th Street South, Wisconsin Rapids, WI
 715-712-3488 



**4110 Plover Road
 Wisconsin Rapids
 WI 54494**

715-423-9650
www.ckandc.net 

**SHOWROOM
 HOURS:**
 Mon-Thurs: 8am-4:30pm
 Friday: 8am-4pm





Better begins with
caring for one another.

Better begins at Aspirus Health.

All good things start by reaching out to each other with real care and compassion. At Aspirus Health, this is how health and healing begin.



Find an Aspirus provider.
call 800.847.4707
visit [aspirus.org](https://www.aspirus.org)



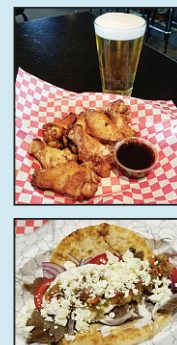
1497 Alpine Drive, Nekoosa WI 54457
715-325-9898 • hoozelsatthelakes.com



**HOOZEL
ON
OVER!**

Mention
this ad and
enjoy one
\$1 domestic
pint on us!

2 GREAT LOCATIONS 



4010 Plover Road, Wis. Rapids WI 54494
715-423-6131 • hoozelsbar.com