

SUMMER FUN BOOK

YOUR GUIDE TO ALL EVENTS & HAPPENINGS
UNDER THE SUN! COVERING THE WAUSAU
AREA & SURROUNDING COMMUNITIES!

2024

A supplement to
CITY
pages

380825.1.pdf

The file is missing!

378187.1.pdf

The file is missing!



PHOTO: COURTESY SHERYL DICKMAN

TASTE OF SUMMER

As I get older, it seems like the seasons are here and gone in lightning speed. Even winter barely felt like it ever showed up (mostly because it hardly did).

Part of the reason I love living here is because of the changing seasons. I embrace them. But spring is my least favorite. People are surprised about that, but it's the time of year when most of my outdoor activities are either suspended or at the most difficult. If I do take Abby for a hike, she'll come back soaked in mud (she hasn't yet met a mud-hole she didn't want to get to know better).

This year, we essentially had an extended spring. I didn't love it. But that just means the summer weather feels that much nicer, as the mountain bike trails open and another season of fun is upon us. As I type this in early May (we work far ahead!) I am about to head out on a group paddle followed by a fish fry. Whether it's group outings or organized events, a summer of fun is upon us.

Get out there and enjoy it.

- BC

CHAR GRILLHOUSE

203 JEFFERSON ST. WAUSAU, WI | 715.848.2900

RESERVE A TABLE TODAY ON OPENTABLE! GIFT CARDS AVAILABLE!



Join us for a culinary journey right here in the heart of downtown Wausau and experience the warmth of our hospitality paired with the finest ingredients.

Whether you're craving a leisurely lunch or a memorable dinner with friends and family, CHAR Grillhouse promises an unforgettable dining experience with our new summer menu.

Follow us to keep up to date with all the specials and new drinks!



CHARGRILLHOUSEWAUSAU

3/20/23



MOSINEE
BREWING COMPANY



Welcome to Central Wisconsin's Finest Craft Brewery



Transforming the brewery and taproom experience, we're creating an attraction to central Wisconsin and you can't get more central than Mosinee!



Our comfortable and sophisticated venue includes a brewery, tap room, and event space for meetings, parties and entertainment.



We invite you to come, relax and enjoy! Join us for weekly music, Trivia Wednesdays and more!

Upcoming Live Entertainment • All Shows 7pm-10pm

MAY 2024

May 10, Fri.	Foxfire Affair
May 11, Sat.	Brewery Comedy Tour
May 18, Sat.	Andy Braun
May 23, Thur.	Brewery Comedy Tour
May 24, Fri.	Jerry Schmitt Band
May 25, Sat.	Cody James

JUNE 2024

June 1, Sat.	Aaron Lee Kaplan
June 6, Thur.	Brewery Comedy Tour
June 8, Sat.	Ira Deboer
June 15, Sat.	Brewery Comedy Tour
June 22, Sat.	John Greiner and friends

JULY 2024

July 6, Sat.	Brady James
July 13, Sat.	Cody James
July 20, Sat.	John Greiner
	(15pc Swing Band)
July 26, Fri.	Jerry Schmitt Band

CHECK OUR FACEBOOK PAGE FOR UPDATED EVENTS

MOSINEE BREWING COMPANY

401 Fourth Street, Mosinee, WI 54455 | 715-693-2739

• Monday 4pm - 9pm • Tuesday 4pm - 9pm • Wednesday 4pm - 10pm • Thursday 4pm - 10pm
• Friday 2pm - 10pm • Saturday 12pm - 10pm • Sunday 12pm - 7pm

373747

CONTENTS

Intro..... 3
 Farmers Markets 6
 Swimming Holes 10
 Boat Landings..... 12
 Public Campgrounds 14
 Disc Golf Courses 16
 Happy Trails..... 18
 Golf Course 20
 Skateboard and BMX Parks 22
 For the Dogs..... 24
 Berry Farms..... 26
 Tennis/Pickleball Courts 28
 Get the Gear..... 30
 Food Trucks 32
 Grandfather Falls 34
 Summer Must List..... 38
 Kids Calendar 62
 Summer Fun Calendar 70
 Five Paddle Spots in the Wausau Area..... 104
 Road Trip Ideas: Marinette County Waterfalls..... 108
 Advertisers Index..... 110

380857.1.pdf
 The file is missing!

STAFF

CITY pages™

City Pages is a locally owned news and entertainment paper published every Thursday by Multi Media Channels LLC, PO BOX 408 Wausau, WI 54981. City Pages is available free for its intended use—to read. © Copyright Multi Media Channels LLC 2024. All Rights Reserved. No part of this publication or any of its contents may be reproduced, copied, modified or adapted without the prior written consent of Multi Media Channels LLC.



Postal 325 North First Avenue,
 Suite 1, Wausau 54401
 Office 715-845-5171 • Fax 715-842-5989
 Website thecitypages.com
 Office hours ... Monday through Friday 9am-4:30pm
 Subscriptions \$85 per year

PUBLISHER
 Patrick J. Wood, publisher@mmclocal.com

GENERAL MANAGER
 Tim Schreiber, tschreiber@mmclocal.com

EDITOR
 B.C. Kowalski, brian.kowalski@mmclocal.com

FRONT OFFICE MANAGER
 Julie Gabler, jgabler@mmclocal.com

CUSTOMER SERVICE/SALES & MARKETING SUPPORT
 Linda Weltzin, Linda.Weltzin@mmclocal.com
 Dawn Ricklefs, dricklefs@mmclocal.com

MARKETING & SALES CONSULTANT
 Paul Bahr, pbahr@mmclocal.com

EDITORIAL SUPPORT
 Evan J. Pretzer

GRAPHIC DESIGN
 Cody Popp





FARMERS MARKETS

Most run through October. All season long find locally grown eggs and meat, honey, maple syrup, flowers and baked goods. Vegetables and fruits arrive as they're ready. If you're wondering about when a specific veggie will show up, ask the farmers.

General guide to when you'll start seeing common veggies

June: Greens, lettuce, peas, rhubarb, asparagus, strawberries

Early- and mid-summer: Onions, beans, zucchini, cucumbers, blueberries, tomatoes

Mid- to late-summer: Eggplant, potatoes, carrots, cabbage, broccoli, garlic, corn, melons

Late-summer and fall: Apples, pumpkins, squash

WAUSAU AREA

Wausau Farmers Market Wednesdays & Saturdays 7 am-until sold out, first Saturday in May thru late fall; River Dr., Wausau. Run by local farmers, bakers, roasters, beekeepers. On Facebook, FarmersMarketofWausau.com, 715-575-1880

Big Bull Falls Farm Market Saturdays 8 am-noon, May thru end of October. 388 River Dr. (parking lot of former VFW, next to the Wausau Farmers Market). On Facebook. 715-572-5225

Weston Farmers Market Tuesdays & Saturdays 8 am-2 pm or sold out. May 4 – Oct. 26. Corner of Schofield Ave. and Camp Phillips Road (next to Dunkin' Donuts). 715-359-6114

Aspirus Farmers Market Thursdays 9 am-3 pm or until sold out, June 20–Sept. 19. Parking lot in front of Aspirus Corporate Office, 2200 Westwood Dr., Wausau. 715-843-1217 or tara.draeger@aspirus.org

Mosinee Farmer's Fresh Market Mondays 11 am -sold out (3-4 pm typically), June 3– Oct. 28, at River Park. Food trucks from 11 am-1 pm. Presented by Mosinee Chamber of Commerce. Mosineechamber.org, 715-693-4330

Kronenwetter Farmers Market Sundays 9 am-2 pm, June 9–Oct. 20, at Buska Park. Live music, food vendors. kronenwetter.org or 715-693-4200, ext. 113

MERRILL, TOMAHAWK, ANTIGO

Merrill Area Farmers Market Every Wednesday & Saturday from 7:30-12. Season begins the third weekend in May - End of October, weather permitting. Normal Park. New vendors accepted, please reach out to Jenna on Facebook at Merrill Farmers Market or by email jennapodgorski09@gmail.com

1764 Farmers Market Fridays 10 am-5 pm, Saturdays 7:30 am — 2 pm. N1738 Highway 17, Merrill. Local growers and producers. www.1764farmersmarket.com. On Facebook.

Tomahawk Farm & Flea Market Saturdays 8 am -2 pm, May thru October. Seasonal produce, pet treats, maple and flavored syrups, canned goods, and flea market finds. New location this year, 79 Homestead Dr. at Qualheim's TruValue. On Facebook.

Tomahawk Main Street Farmers Market Tuesdays 11-3 pm, June thru early October, at North Third Street. Locally grown produce, canned goods, plants and flowers, jellies, jams, baked goods, honey, maple syrup, and more. 715-453-1090 and on Facebook. Tomahawkmainstreet.org. director@tomahawkmainstreet.org

Antigo Farmers Market Saturdays 8 am-noon, June – September. Heinen Pavilion at Peaceful Valley Park, 420 Field St. Antigofarmersmarket.com, 715-219-0579 or 715-216-1846 and on Facebook.



THE RIVER VALLEY JAZZ SOCIETY PRESENTS

JAZZ ON THE RIVER

FREE SUNDAY EVENING JAZZ CONCERTS

HELD 5 P.M. TO 7 P.M. AT KICKBUSCH PLAZA, WAUSAU (JUST WEST OF THE MARATHON COUNTY PUBLIC LIBRARY HEADQUARTERS)

- **JULY 14,**
TIM BUCHHOLZ QUINTET
- **JULY 21,**
DADDIO
- **JULY 28,**
THE BOB KASE JAZZ QUINTET
- **AUGUST 4,**
ZIJİ
- **AUGUST 11,**
JANET PLANET
- **AUGUST 18,**
THE JEFF ERICKSON QUARTET



SPONSORS



Clyde F. Schlueter
Foundation Fund

Dudley Foundation



WWW.RIVERVALLEYJAZZ.ORG

376185

STEVENS POINT, WISCONSIN RAPIDS

Stevens Point Farmers' Market Mon.-Sat. 6:30 am – 5 pm. May thru October. Saturday is the biggest day. Weekday vendors make their own hours. Located at Mathias Mitchell Public Square downtown. Stevenspointfarmersmarket.com and “Stevens Point Summer Farmers Market” on Facebook

Indoor Market on Strongs Runs year-round. Wed. 9-4, Fri. 9-4, Sat. 9 am-2 pm. 1332 Strongs Ave., Stevens Point. TheMarketOnStrongs.com, 715-340-1295

Wisconsin Rapids Downtown Farmers Market Thursdays & Saturdays 8 am-2 pm, June 13 – Oct. 12. Located along the river on First Ave. S. [Wisconsin Rapids Downtown Farmers Market on Facebook](https://www.facebook.com/WisconsinRapidsDowntownFarmersMarket)

WESTERN MARATHON CO., MEDFORD

Stratford Farmers Market Wednesdays 4-7 pm, June thru September. Ground Up Coffee Shop, 212900 Legion St Stratford. On Facebook

Abbotsford Farmers Market Tuesdays 11 am-3 pm, May – October Corner Hwy. 13 & 29, next to Holiday Gas Station. Farm fresh vegetables, seasonal fruit, jams, canned products, baked goods. 715-615-1333

Marshfield Festival Foods Saturdays & Sundays 8 am-1 pm, Memorial Day Weekend to late fall. Parking lot at 1613 N. Central Ave. Locally grown products only. 715-384-8866

Main Street Marshfield Downtown Farmers Market Every Tuesday 8 am-1 pm, June – October. Pick ‘N Save parking lot. Local produce, flowers, baked goods, crafts. MainStreetMarshfield.com

Medford Farmers Market Saturdays 8 am-noon at Taylor County Fairgrounds and Tuesdays 1-5 pm at Whelen St. across from the post office. Open thru October. 715-748-3960 and on FB

NORTHWOODS

Hodag Farmers Market Saturdays 8 am-1 pm through mid-October at Rhinelander Pioneer Park. Fresh fruits, vegetables, meats, flowers, seasonals. 715-617-7903, hodagfarmersmarket.com

Eagle River Wednesdays 8:30 am-1 pm, Sundays 10 am-2 pm, thru early October. Hwy 45, north of the bridge. Produce, honey, jams, crafts. eagleriverfarmersmarket.com, 715-477-0645

Minocqua Fridays 8 am-1 pm, mid-May through mid-October. 408 E Chicago Street (Next to the Minocqua Police Department. MinocquaFarmersMarket.com.



FARMERS MARKETS

We have all the

EXTRAS *to make your picnic great!*



238985



Extra Fresh

Our oven-fresh bakery is made from the “freshest ingredients” just like you’d use at home if you had time.

Extra Quality

We carry only certified Agnus beef, Gold’n Plump poultry and Smithfield Prime Pork... so stop by our meat counter, then fire up the grill and get ready to savor the flavor of “simply the best you can buy!”

Extra Delicious

Need a picnic in a hurry? No problem. Stop by our deli and pick up some delicious fried chicken, potato salad or slaw. Whether it’s a picnic for two or a family reunion, we’ve got all the fixin’s for a great celebration.

Extra Variety

From apples to zucchini you’ll find a great variety of fresh summertime fruits and vegetables at Crossroads County Market.



Fresh. Easy. Traditions.

220 S. 18th Ave. • Wausau, WI
715-845-8846

SWIMMING HOLES

A BREAKDOWN OF ALL THE SUMMER SWIMMING POOLS AND WATERING HOLES IN THE AREA.

WESTON AQUATIC CENTER

5815 Alta Verde Street (next to Kennedy Park)
Open daily starting June 1: Mon.-Sat. 11 am-7 pm, Sun. 1-7 pm.
Admission \$5 youth and adult, \$2 senior (62+), \$1 under 1, \$2 after 5 pm all ages. Buy annual passes through the portal on the aquatic center's website, www.westonwi.gov/236/Aquatic-Center

WAUSAU CITY POOLS

Memorial Pool

505 Memorial Park Road

Kaiser Pool

900 E. Bridge Street

Schulenberg

1533 Summit Drive

Open daily: Sun-Thurs 12:30 pm-7 pm; Fri-Sat 12:30-7:50 pm
Admission: \$4 youth, \$5 adults, \$2 seniors, half price after 6 pm. No open swim Memorial on Mondays; Schulenberg on Tuesdays; Kaiser on Wednesdays

Splash pad at Marathon Park

1201 Stewart Ave, Wausau, WI 54401
Open daily: Noon- 6pm (closes Aug. 3-8 for the fair)
Admission: \$1.25 (under 1 is free)

Rothschild-Schofield Aquatic Center

1004 Park St., Rothschild (next to Pavilion)
Open daily: Monday through Saturday 11 am-7 pm; 1-7 pm Sundays.
Admission: \$5, \$2 price after 5 pm. Free 2 and under, and 62 and over.

Bierman Family Aquatic Center

Located at the Merrill Area Recreation Complex.
Open daily: noon-7 pm
Admission: \$4 daily, \$2 non-swimmer, 62+, military.

Donald Copps Municipal Pool & Waterslide Complex

Located at Sims and Michigan Ave., Stevens Point
Open daily starting June 1: Hour lap swims 8 am and noon Mon.-Fri.; open swim sessions 1-4 and 5-8 daily.
Admission: \$4, \$5 non-resident, 3 and under free. Season passes available.

PARKS AND BEACHES

No lifeguards at these locations. Some don't even have sanctioned swim areas but are frequented by locals for the nice waters.



Tiki Beach Bar & Grill, a private beach on Lake DuBay of the bar/restaurant, is one of the most popular water spots in central Wisconsin, with a large sand area, lawn, beach games, kayak rentals, docks, and concerts on Thursdays and on the weekends through summer; see our summer fun calendar for event listings. Must be 21, or accompanied by adult guardian



Mission Lake Park Take Hwy. 153 east of Mosinee to Hwy. Y, then north to Mission Lake Road • Considered the best swimming spot in the area, with spacious beach on natural lake, shelters, boat landing, volleyball, playground and restrooms

Sunny Vale Park West side of Wausau, just south of 72nd Ave. interchange on Hwy. 29 • Sand beach on Sunny Vale Lake, with shelters, restrooms, picnic areas, hiking trail and fishing pier.

Big Eau Pleine Park West of Mosinee off Hwy. 153 to Eau Pleine Park Road. Turn south, go about 3 miles • Sand beach, boat landings, shelters, horseshoe pits, playground. Hiking & biking trails, also for horseback riding. Restrooms, lots of parking, open shelters, scattered picnic tables

Dells Of The Eau Claire Park Take Hwy. 52 east of Wausau 17 miles, right on Hwy. Y, 2 miles •

Scenic river gorge of rock formations. Swimming beach and rapids (do not swim or jump in the rapids). Picnic tables, shelters, horseshoe pits, playground, restrooms, changing rooms, trails

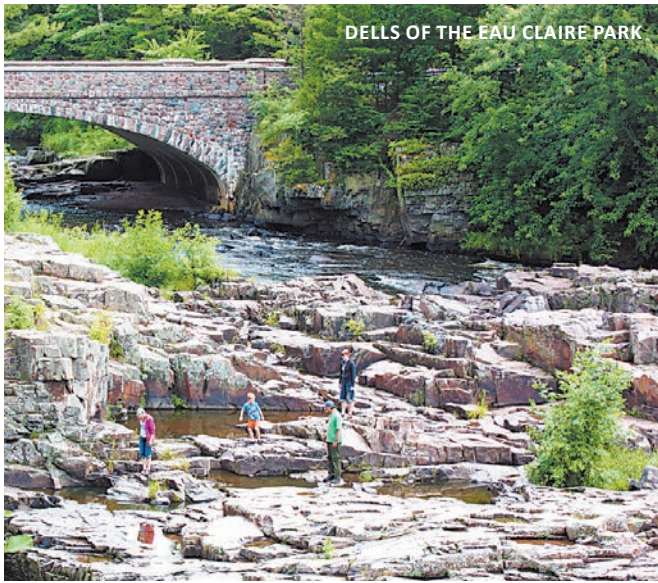
Rib Falls From Wausau, Hwy. 29 west 13 miles, north on Hwy. S for 2 miles. Northwest of Marathon City • No beach or designated swim areas, but clear water with rustic, rock-gravel shore in shallows below falls, sand bottom river shores above. Hiking trails, fishing, vault toilets, picnic area, playground and shelter.

Voelz Memorial Park On Wilson Lake, east of Marathon County just inside Shawano County. Hwy. 29 east to Nightingale Road. Park entrance at corner of Nightingale and Oak • Fishing pier, small boat landing, playground, picnic tables, shelter, rustic trail, restrooms, small beach area

Council Grounds State Park 2 miles northwest of Merrill off Hwy. 107 • Large beach and rock outcroppings along the Wisconsin River. Picnic shelter, shore & pier fishing, restrooms, biking & hiking paths. Canoe rentals. Park sticker required.

Otter Lake About 15 miles northeast of Merrill, take Hwy. S east off Hwy. 51, then to Stevenson Road, follow signs • Off the beaten path, but worth the effort. Clear lake with swimming beach, natural trails, rustic camping, picnic area, boat landing, toilets. Non-motorized boats only

Tug Lake Recreation Area 5 miles north of Merrill on Hwy. K to Tug Lake Road • 2-acre park with beach, boat landing, picnic shelter with electricity, playground, outhouses and fishing.



DELLS OF THE EAU CLAIRE PARK

- Lake Emily Park** 3968 Park Dr., Amherst Junction • 143-acre park with beach, two picnic lodges, boat ramp, fishing, playground, showers, nature trail, volleyball court and baseball field
- Bukolt Park** On Wisconsin River north of downtown Stevens Point at the end of Bukolt Avenue • Beach, bathhouse, lodge, picnic area, horseshoe pits, boat ramp and docking area, restrooms, playground, lighted baseball diamond, volleyball court, skateboard park. Access to Green Circle Trail.
- Iverson Park** 4201 Hwy. 66 (Main St.), Stevens Point • On the beautiful, clean Plover River. Picnic area, playground, shelter, restrooms, swimming beach, lodges, nature trails. Access to the Green Circle Trail.
- Mead Park** On Wisconsin River in Stevens Point, corner of West Clark and Whitney streets • Small swimming beach, restrooms, picnic area, disc golf, tennis courts, volleyball court, horseshoe pits, lighted baseball diamond, shelter, dock, playground for kids of all abilities
- Lake Pacawa Park** 1831 Maple Dr., behind Menards, Plover • 35 acre park with beach area, picnic area, playground, restrooms, shelter, Babe Ruth ball diamond, two soccer fields. Non-motorized watercraft
- Jordan Park** 5800 Jordan Road, 2 miles northeast of Stevens Point • 271-acre park with swimming beach, open pavilion, picnic area, boat ramp, nature center, trail, volleyball court, horseshoe pits, playground, baseball field and lodges
- Sunset Lake Park** Sunset Lake Road, about 15 miles east of Stevens Point. Hwy. 10 to Hwy. 161, north on Hwy. A, then east on MM • 61-acre lake is high-quality swimming water with boat landing and fishing. Picnic area, beach, grills, toilets, playground.
- Lake Helen Park** 3.5 miles east of Rosholt • Beach, boat landing, restrooms, playground, picnic/shelter, volleyball court, horseshoe pits

DuBay Park 13 miles northwest of Stevens Point. Off Hwy. 51 take Hwy. 34, then south 7 miles to Hwy. E, east to park • 51-acre park with beach, shower buildings, large picnic area, lodge, fishing, boat ramp, playground, volleyball court, horseshoe pits and baseball field

Collins Park 3 miles southwest of Rosholt, 2711 Hwy. I • 21-acre wooded park with small swimming beach, boat ramp, showers, fishing, horseshoe pits, volleyball, playground

LIVE MUSIC • RIVER HISTORY • FOOD & BREWS

LOG JAM Festival

AUGUST 9-11 2024

BROUGHT TO YOU BY

DOWNTOWN RIVER PARK • MOSINEE, WI • FREE ADMISSION

BOAT LANDINGS

With so many miles of shoreline in central Wisconsin, this is not an all-inclusive list. Many localities and private businesses maintain small, lesser-known access points. Most launches listed here are suitable for motorboats, but a few are limited to canoes, kayaks and paddleboards, as noted.

Some boat landings may have a fee. City of Wausau and Marathon County Parks have an annual sticker fee of \$30 or \$6 for a daily pass. Details at co.marathon.wi.us



MARATHON COUNTY

Wisconsin River and Flowages

Listed from north to south (downstream)

Village of Maine Kayak Launch, located at east end of Playground Lane near shoreline Dr.

Wisconsin River Forest Unit, north of Brokaw (Wisconsin River) Unimproved landing just east of Hwy. W, on end of Pine Bluff Road.

Brokaw (Wisconsin River) Unimproved but well used by paddlers and anglers. In the middle of Brokaw, take Fourth Street and follow the rough road down to the river.

Gilbert Park (Wisconsin River) N. Sixth Street, Wausau.

Wausau Canoe/Kayak Launch (Wisconsin River) On the River's Edge Trail, just north of the Bridge Street bridge. Access from E. Wausau Avenue to N. River Drive. A handicapped-accessible launch for all ages and abilities.

Schofield Park (Wisconsin River) E. Randolph Street, Wausau, near Marathon Electric.

Oak Island (Wisconsin River, below Wausau dam) River Drive, just north of Thomas Street, near downtown Wausau. There is also a small kayak slip along the River's Edge Trail, between this park and the whitewater course just upstream.

Memorial Park (Lake Wausau) South of Grand Avenue, off Sturgeon Eddy, Wausau.

D.C. Everest Park (Lake Wausau) South end of Third Avenue, Wausau.

Nueske's at Gulliver's Landing (Lake Wausau), also easy access to Big Rib River. In front of the restaurant, on the west side of the 17th Ave./Hwy. N bridge.

Rookery View Park (Lake Wausau) On the opposite side of the bridge as Gulliver's. Carry in canoe and kayak access

Bluegill Bay (Lake Wausau) East on Cloverland Lane, Rib Mountain.

Schofield Dam Upper (Eau Claire River) Just off Grand Avenue. Boat landing above dam.

Schofield Dam Lower (Eau Claire River), Just off Grand Avenue. Boat landing below dam.

Kort Street (Wisconsin River) End of Kort Street, a few blocks down from St. Therese Church, and just upstream from the Rothschild Pavilion.

Domtar Company (Wisconsin River) End of Sunrise Drive, Rib Mountain. Entry just below the dam.



Half Moon Lake (Wisconsin River flowage). Near Pinewood Supper Club and Moonlight Landing restaurants, off Hwy. KK, Town of Mosinee

Mosinee River Park (Wisconsin River Mosinee flowage). Just off Main Street near downtown.

Canoe Portage Park (Wisconsin River), Mosinee, off River Road on east side of river

Chuck's Boat Landing, Mosinee (Wisconsin River, below Mosinee dam). End of Fremont St, off Third Street.

Big Eau Pleine Park Off Hwy. 153, 10 miles southwest of Mosinee • Three boat landings on this peninsula, each at the end of the roads going through the large park.

Big Eau Pleine Reservoir Two landings just off Hwy. O, on either side of the bridge. A Lower Reservoir landing gives access to the Wisconsin River and Lake Dubay area below the dam, on Dam Road.

EAU CLAIRE RIVER AND NEARBY LAKES

Eau Claire River Conservancy Wausau, at the end of E. Kent Street near East Bay Athletic Complex fields. Canoe/kayak access on river/flowage, on undeveloped city-owned land.

Weston Eau Claire River Trail Canoe/kayak access at several points, but the main, most developed launches are at the Ross Avenue bridge, and the Silver Creek Farm Memorial Access just north of Schofield Ave. on Hwy. J and Callon Ave. Other rough access points include on Ringle Avenue just east of Weston, and on Club House Road (north of Ringle Avenue) and others. Details at westonwi.gov

Mission Lake Park South of Hatley off Hwy. Y

Pike Lake South of Hatley off Hwy. Y, east on Mission Lake Road

LINCOLN COUNTY

Map of all county boat landings (and other recreational opportunities) available by calling 715-539-1034, or go to co.lincoln.wi.us, under Forestry, Land & Parks department. Merrill Parks and Recreation office at 715-536-7313, merrillparkandrec.com

Tug Lake 8 miles north of Merrill on Hwy. K to Tug Lake Road, then west 1/2 mile

Camp New Wood County Park 8 miles northwest of Merrill on Hwy. 107 along Wisconsin River

JOIN OUR TEAM

Where dedication and passion are appreciated.
Our employees matter at Marathon Cheese.



- Climate Controlled Environment
- Advancement Opportunities
- Great Benefit Package
- Paid Vacation
- Employee Appreciation Events
- Company Match 401(K)



<https://www.mcheese.com/join-our-team>



MARATHON
CHEESE CORPORATION

Council Grounds State Park (Wisconsin River) Two landings, one above the dam on Lake Alexander flowage (take Forest Drive), the other below the dam near trails and campground area. Find the park off Hwy. 107, 2 miles northwest of Merrill

Lake Alexander (Wisconsin River flowage above dam) North of Merrill. Western shore on Sunset Drive, north of Hwy. 64.

Otter Lake About 15 miles northeast of Merrill, take Hwy. S east off Hwy. 51, then to Stevenson Road, follow signs. Non-motorized boats only

Ott's Park Located on west side of Merrill on Wisconsin River on north end of Foster Street

Prairie Trails Park Located near corner of Hwy G and K along Prairie River with 2 canoe landings

Riverside Park Located in Merrill off S. Center Ave. along Wisconsin River

Underdown Recreation Area North of Merrill off Copper Lake Road, 8 formal boat landings with many informal access points to water

PORTAGE COUNTY

Stevens Point Parks and Rec. Dept. at 715-346-1531 and Portage County at 715-346-1433

Bukolt Park North of downtown Stevens Point, on Bukolt Avenue

Pfiffner Pioneer Park Downtown Stevens Point, on Crosby Avenue

Lake Dubai landing River Lane, just west of Hwy. 34

Lake Dubai Park Hwy. E, Off Hwy. 34, between Wausau and Stevens Point

Lake Emily Hwy. 10 east, 1 mile west of Amherst Junction

Collins (Lake) Park Hwy. 66 east of Stevens Point 16 miles, right on HWY I for 1 mile, left into the park

Consolidated Park 1/2 mile south of Stevens Point, adjacent to Wis. River

Jordan Park (Plover River, Jordan Pond) Hwy. 66 northeast of Stevens Point 6 miles. Left on Hwy. Y, then first left

Lake Helen Park 3.5 miles east of Rosholt on Lake Helen Road

Meyers Lake Boat Landing Lake Meyers Rd., 1 mile east of Amherst Junction

Peterson Park Tree Lake Rd., 5 miles north of Rosholt

Sunset Lake Park Sunset Lake Road, about 15 miles east of Stevens Point. Hwy. 10 to Hwy. 161, north on Hwy. A, then east (right) on MM Park

PUBLIC CAMPGROUNDS

Details of nearby sites, plus general information on state and national forest camping nearby. For private campgrounds, check the chamber of commerce in the area that piques your interest.

MARATHON COUNTY

The Wausau/Marathon Co. Park Dept. accepts campsite reservations for Big Eau Pleine Park, Dells of the Eau Claire Park and Marathon Park. Some sites may be reserved and require a 2-night minimum stay, others available on a first come, first served basis. Marathon County implemented a new cloud-based registration system this year to make for an easy reservation process • Reservations: On weekdays 8 am–4:30 pm call 715-261-1566, or visit 212 River Dr., Wausau; or online at co.marathon.wi.us/parks • Visitors may not bring firewood into parks, forests or campgrounds. Firewood available at sites for \$6 per bundle, or gathered on-site.

Dells of the Eau Claire Park East of Wausau 15 miles (take Hwy. 52 or Hwy. Z) on Hwy. Y • Sites: 28 total, 25 with electricity (family campground) • Fees: \$20 w/electricity, \$17 without • Group camping (no electricity) \$120 for 1–25 people, \$165 for 26+ • Located near scenic Eau Claire River Dells, Ice Age Trail and beach area

Big Eau Pleine Park Southwest of Wausau 18 miles (or 10 miles southwest of Mosinee). Take Hwy. 153 west about 5 miles out of Mosinee to Eau Pleine Park Road, turn south, go about 3.5 miles • Sites: 106 total • Fees: \$20 w/electricity, \$17 without; lake view sites \$22 for west unit w/electricity, \$19 south unit without. Sanitary dump \$7 per use • Group rates: \$135 for 1–25 people, \$185 for 26+ • Many miles of walking, biking and horseback trails, disc golf, beach & boat



landing, handicap site available. Majority of park undeveloped

Marathon Park Stewart Avenue, Wausau • Sites: 28 total, 24 w/electricity • Fees: \$25 w/electricity, \$20 without. Sanitary dump \$7 per use • Near downtown, electricity, showers, grills, playgrounds and Marathon Junction Concession. No campfires allowed

Marathon County Forests camping in undesignated recreation areas allowed on individual permit basis for \$15, which is valid

for up to 14 consecutive nights of camping. For permit contact Parks, Recreation, and Forestry Administrative Office at 715-261-1550.

PORTAGE COUNTY

Campgrounds have on-site firewood and ice. Daily fee includes \$6 charge for electricity. For more information, contact the Portage Co. Park Dept., 715-346-1433. Online reservations at co.portage.wi.us/parks.

Collins (Lake) Park Rosholt. Take Hwy. 66 east of Stevens Point 16 miles, right on Hwy. I. Go 1 mile, left into park • Sites: 28 • Fees: \$8 reservation fee, \$24 daily • Beach, boat ramp, toilets, showers, playground, handicap and traveling biker sites available

Dubay Park Northwest of Stevens Point 13 miles, off Hwy. 10 • Sites: 31 • Fees: \$8 reservation fee, \$24 daily • Beach, boat ramp, playground, picnic lodge, baseball field, toilets, showers, handicap site available

Jordan Park Hwy. 66 northeast of Stevens Point 6 miles. Left on Hwy. Y, then first left • Sites: 22 improved sites, 3 walk-in sites • Fees: \$8 reservation fee, \$24 daily • Three canoe/walk-in sites (no electric), toilets, showers, beach, playground, baseball field and trail, handicap site available

Lake Emily Park Amherst Junction. Hwy. 10 about 8 miles east of Stevens Point, right on Lake Drive • Sites: 67 • Fees: \$8 reservation fee; camping fee \$24 • Beach, boat ramp, toilets, showers, playground, baseball field, handicap site available

Hartman Creek State Park On Hwy. 54, 20 miles southeast of Stevens Point • Sites: 103 • Fees: \$7.75 reservation fee. Camping starts at \$18 nightly for state residents, \$23 out-of-state. Vehicle sticker required: \$28 annually (in-state), \$8 daily • Showers, flush toilets, hiking, horse riding and biking trails (including 8 miles of single-track). Seven lakes, sandy swimming beach, picnic areas, nature center. Teepee rental available. dnr.wi.gov, or wisconsin.goingtocamp.com.

LINCOLN COUNTY

For maps, reservations and more information, contact the Lincoln Co. Forestry Dept. at 715-539-1034 or co.lincoln.wi.us, under Forestry, Land & Parks department. Do not bring in firewood from more than 10 miles from the campground.

Otter Lake Southeast of Tomahawk. Take Hwy. 51 15 miles past Merrill, then Hwy. S east 4 miles to Stevenson, follow signs • Sites: 25 primitive campsites. First come, first served • Fees: \$15/night • Beach, nature trail around lake, boat landing (non-motorized only), picnic area, toilets

Camp New Wood County Park On Wisconsin River. Take Hwy. 107 northwest of Merrill 10 miles • Sites: 7 primitive, non-reservable • Fees: \$15/night • Entrance to Ice Age Trail, water pump, playground, primitive bathrooms, boat landing, two shelters

Lincoln County Forest System covers more than 100,000 acres. Camping is not allowed at High Lake, Fox Lake, Moraine Lake, Henson Lake or Kordick Lake • Fees: Free for no more than 14 days. Call to let them know you're there, as some places are remote • Camping, mountain biking, hiking, fishing. Maps available

Underdown Recreation Area In the southern part of the Harrison Hills Forest Unit, 13 miles north of Merrill. Take Hwy. K north of Merrill to H, then east to Copper Lake Road • Sites: 11 primitive campsites large enough to accommodate trucks with horse trailers • Fees: \$5 daily user, or summer/fall season passes \$15 at the Forestry office. No pass required for children under 16. Camping \$15 per night • On the Ice Age Trail with several kettle lakes, boat landing, lots of trails for horseback, mountain bike & hiking trails, toilets and water pump

Council Grounds State Park Hwy. 107, 2 miles northwest of Merrill • Sites: 52 family sites • Fee: \$7.75 reservation fee. Camping costs start at \$15 nightly for state residents, \$20 out-of-state. State park vehicle sticker required: \$28 annually (in-state), \$8 daily • Showers, flush toilets, boat landing and hiking area on scenic shores of Wisconsin River. Outdoor group camp available on three sites that can accommodate up to 32 people. Minimum stay of two nights. Same day and advance reservations. 1-888-947-2757, dnr.wi.gov or wisconsin.goingtocamp.com

NORTHERN HIGHLAND AMERICAN LEGION STATE FOREST

White sand beaches, fishing lakes, quiet lakes, bike trails and hundreds of family-friendly camping sites just north of Minocqua in this 236,000-acre system.

General information: dnr.wi.gov/topic/stateforests
Maps, details, reservations: wisconsin.goingtocamp.com.

CHEQUAMEGON-NICOLET NATIONAL FOREST

Many areas are within a 90-minute drive of Wausau. The sprawling Chequamegon-Nicolet National Forest in Wisconsin has more than 900 sites across 47 campgrounds, plus hundreds of other individual sites. Good details on campsites and specific areas at fs.usda.gov/cnnf. Click on "Recreation" for a listing of sites and their surroundings, divided by district. There are directions and helpful descriptions of the campsites, but first-time visitors need a map. For other information and to order maps, contact the U.S. Forest Service's Rhinelander office at 500 Hanson Lake Road, Rhinelander. 715-362-1300.

382158.1.pdf

The file is missing!

DISC GOLF COURSES

Go anytime or join a league. We found a couple of new listings to add this year. See the Facebook group [Wausau Area Disc Golf Enthusiasts](#)

WAUSAU AND MERRILL AREAS

Memorial Park 500 Memorial Park Rd., Wausau. 9 hole, water in play, lightly wooded, mostly flat

Northcentral Tech College 1000 W. Campus Dr, Wausau. 18 hole, mostly flat and lightly wooded

Big Eau Pleine Park 3301 Eau Pleine Park Rd., Mosinee. 18 holes, multiple tees and pin positions. Mostly flat, wooded. No fee but donations are encouraged.

Yellow Banks 3903 Northwestern Ave., Weston. 9 holes, water in play on a few. Moderately hilly and mostly wooded



- Horrace Mann** 3101 N 13th St, Wausau. 9 holes. Flat, on school grounds
- John Muir** 1400 Stewart Avenue. 9 holes, on school grounds
- Wausau East** 2607 N. 18th St, Wausau. 9 holes. Flat, on school grounds
- Liberty Park** 223978 Lakeshore Dr., Rib Mountain 9 holes.
- Riverside Park** 1700 O'Day St., Merrill. 12 holes (three are new), plus ADA holes, water in play. Mostly flat, moderately wooded
- Stange Park** 209 West 3rd Street, Merrill. 6 holes
- Kitchenette Park** 211 West 1st Street, Merrill. 3 holes
- Nokomis Community Park** Cougar Ln., Tomahawk. 18 hole. Mostly flat, lightly wooded

STEVENS POINT, MARSHFIELD, WISCONSIN RAPIDS AREAS

- Yulga Course** 1301 Wojcik Memorial Dr., Stevens Point. 18 hole, multiple tees and pin positions. Mostly flat, moderately wooded
- McDill Pond Course** 3899 Patch St., Stevens Point. 9 holes. Moderately hilly, wooded (Course is currently being worked on, but workers are hoping to have it open this year.)
- Mead Park** 1201 W. Whitney St., Stevens Point. 9 holes, water in play. Mostly flat, lightly wooded
- Bluebird** 3966 Bluebird Drive, Plover. 9 holes. Fairly open and flat, with some trees.
- Stockton Park** 3333 Custer Rd, Stockton. 9 holes. Mostly wooded, short holes.
- Standing Rocks** 7782 Standing Rocks, Amherst. Three loops: 12-hole west, 9-hole middle, and 12-hole east. Moderately hilly, heavily wooded. \$60 family season pass, \$30 individual; \$4 daily
- South Wood County Park** 6411 South Park Rd., Wisconsin Rapids. 12 holes, water in play on a few. Mostly flat and wooded
- North Wood County Park** 7500 Park Lane, Arpin. 18 holes, multiple tees. Mostly flat, wooded. Fees: \$4 daily, \$20 annual, \$40 family, \$2 camper.
- Braem Park** 905 N. Cedar Ave., Marshfield. 18 holes, multiple pin placements. Mostly flat and heavily wooded
- Wildwood Park** 1800 S. Roddis Ave., Marshfield. 9 holes. Mostly flat and moderately wooded
- Robinson Park** 1150 17th St. N., Wisconsin Rapids. 9 holes. Mostly flat, lightly wooded

Marathon County Child Development Agency, Inc

Enrolling NOW for Fall 2024!

We are a free preschool for children aged 3-5 in Wausau, DCE, and Mosinee area school districts for income-eligible children and their families.

Please call: 715-845-2947 or email us at mccdahsinfo@gmail.com to get more information.

Visit our website at: www.mccdahs.org





380522.1.pdf

The file is missing!

HAPPY TRAILS

For hiking, biking, or just dorking around in the wild, central Wisconsin has miles of paths for any fitness level. Here are some of the more interesting ones to check out.

EAU CLAIRE RIVER TRAIL, WESTON

Explore some of the area's most beautiful woods, river shoreline, wildflower meadows and small boardwalk bridges over streams and river channels. Because the paths are mostly flat with gentle slopes, this is a good choice for families. Two blocks away, on Ryan Street, you'll connect with the Mountain Bay Trail. Tips: Best parking is on Ryan Street, just north of Schofield Avenue. There's also limited parking at the east end of Thomas Avenue for access to the mid-point of this trail.

NINE MILE FOREST RECREATION AREA

Miles of mountain biking through one of the county's most popular forest units. Beginner to expert single-track mountain biking trails. \$5 day pass, \$30 summer season pass. Hiking and running allowed on ski trails in summer. Take Highway NN to Red Bud Road.

CEDAR CREEK TRAIL, ROTHSCHILD

Easily the most scenic and pleasant ride in the area, this winding trail offers close views of Wisconsin River. Pedal through forests, meadows and a red covered railroad bridge perfect for pictures. Tips: The best place to start is behind Stoney Creek Inn, or at the bike/ped bridge that crosses the Wisconsin River. The path starts and ends at Military Road, two blocks from the River Street Park. There, you'll also find the bridge crossing the river. Park at the River Street Park next to the bridge, or in the south end of the Cedar Creek Mall parking lot.

RINGLE TRAILS

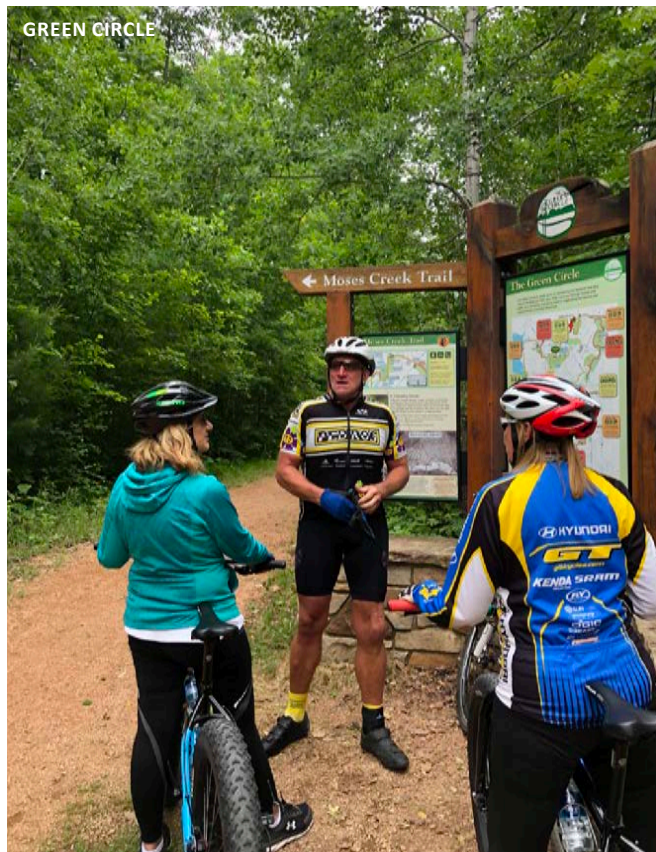
Located near the Marathon County landfill outside of Hatley. Smooth areas for beginning mountain bikers, but also some jumps, gaps and banks for more experienced riders. There's also a skills track with progressively harder obstacles and some skills obstacles in the parking lot. Mostly designed by professional builder FlowTrack Mountain Bike Trails. New trails being added all the time. Access the trailhead off Hwy. 29, at the big sign for the landfill.

SYLVAN HILL

Sylvan Hill North side of Wausau near Tribue Golf Course. Downhill mountain biking trails with a skill area and pump track at the top. The route is essentially one main easy loop with five jump lines that get progressively more difficult. Don't take these trails lightly - the harder ones are definitely for more expert riders. Access parking lot at the end of Coates Lane behind Wausau East High School. Donations are encouraged.

UNDERDOWN RECREATIONAL AREA

Lincoln County, about 25 miles north of Merrill. Find miles and miles of winding wilderness trails (including an Ice Age Trail segment). Volunteers this spring completed a boardwalk to create a full loop trail around Underdown Lake forests and past many lakes. Follow Hwy K about 11 miles north of Merrill, turn east on Copper Lake Avenue. There's also roadside parking on the park's southwest area just off Horn Lake Road.



BIG EAU PLEINE PARK

West of Mosinee, 18 miles southwest of Wausau. Hwy. 153 west from Mosinee to Eau Pleine Park Road. Turn south and go 3.5 miles • A developed wilderness trail system provides nine miles of shoreline and forest access paths on this peninsula in the flowage. Good family hiking and biking, as the trails take you through a couple of picnic and beach areas. Wilderness, kind of, but not remote, with a main road that goes straight through the middle of the park. Plenty of space for a full day's outing.

TRILLIUM TRAIL

Rib Mountain. Off of Highway N, just west of SAFER Fire Station • This new trail allows for some great bike riding or running around the Rib Mountain area. Traverses on and off of Trillium Lane in Rib Mountain, connects to Fox Glove Road, allowing one to avoid a busier road and the big hill on Fox Glove. Connects with Azalea Road, which leads to the bike bridge to Rothschild and the Cedar Creek Trail. Parking either at the base of Rib Mountain or at Doeppke park and using the off street path to get to Trillium is a good option.



BUS. 51 BIKE TRAIL (NEW TRAIL)

Kronenwetter. Starts at Happy Hollow Road and extends to Flanner Road, allowing a smooth ride from the Kronenwetter to Mosinee. Get there via the bike route leading from the Cedar Creek trail in Rothschild, which itself can be accessed from Rib Mountain via the Trillium Trail.

OTTER LAKE

Lincoln County, east of Tomahawk. About 15 miles north of Merrill, take Hwy. 5 east off Hwy. 51, then to Stevenson Road, follow signs • This part of the county's forest system is found in the Harrison Hills area. The lake itself is beautifully clear with a beach perfect for swimming, plenty of natural trails and rustic camping nearby.

NOTE: It's too small for a separate listing, but there is a new little trail along Old Grand Avenue in Rothschild from the intersection with Kort Street to the intersection with Grand Avenue.



380067.1.pdf

The file is missing!



GOLF COURSES

It's not just about the game. Many sport historic clubhouses and restaurants full of Wisconsin character. Explore with this list of courses within about an hour's drive of Wausau.

18 HOLES

Bass Lake Country Club W10650 Bass Lake Road, Deerbrook. North of Antigo 18 miles, off Hwy. 45 • 715-623-6196, golfbasslake.com • Driving range, pro shop, restaurants. Par 71

Bullseye Golf Club 2800 Ridgewood Trail, Wisconsin Rapids • 715-423-2230 or 715-423-2225, bullseyegolfclub.com • Pro shop, banquet hall. Par 72

Eagle River Golf Course 457 E. McKinley St., Eagle River. Hwy. 45, past bridge • 715-479-8111, eaglerivergolfcourse.com • Driving range, pro shop, restaurant. Par 71

Foxfire Golf Club at Par 4 Resort 201 Foxfire Drive, Waupaca • 715-256-1700, par4resort.com • Pro shop, indoor golf simulator, restaurant. Par 70

Glacier Wood Golf Club 604 Water St., Iola • 715-445-3831, glacierwoodiola.com • Driving range, pro shop, restaurant. Par 71

Greenwood Hills Country Club (private) 2002 Poplar Lane, Wausau • 715-848-2204 golf shop, 715-848-2204 clubhouse, greenwoodhillsc.com • Pro shop, PGA pro, pool, fitness area, restaurant & bar, event and banquet space. Par 72

Indianhead Golf Course 966 Indianhead Drive, Mosinee. Hwy. 153 west, toward Industrial Park • 715-693-6066, indianheadgolfcourse.com • Driving range, pro shop, PGA pro, restaurant, banquet facilities. Par 72

Inshalla Country Club N11060 Clear Lake Road, 2 miles north of Tomahawk off Hwy U • 715-453-3130, inshallacc.com • Driving range, pro shop, restaurant and banquet hall. Par 70

Lake Arrowhead Golf Club 1195 Apache Lane, Nekoosa • 715-325-2929, lakearrowheadgolf.com • Golf pro, pro shop, driving ranges, restaurant, two 18-hole courses in lake setting. Par 72

Marshfield Country Club 11426 Wren Road, 2 miles west of Marshfield on Hwy. H • 715-384-4409, golfmcc.com • Driving range, restaurant. Par 70

Merrill Golf Club 1604 O'Day St., Merrill • 715-536-2529, merrillgolfclub.com • PGA on staff, pro shop, banquet facility. Par 72

Minocqua Country Club (private) 9299 Country Club Road, Minocqua • 715-356-5216, minocquacountryclub.com • Pro shop, PGA on staff, restaurant. Par 72

Nicolet Country Club 5245 Fairway Court. West of Laona 1 mile on Hwy. 8 • 715-674-4780, nicoletcountryclub.com • Driving range, pro shop, bar & grill. Par 67

Northwood Golf Course 3131 Golf Course Road. 2 miles west of Rhinelander on Hwy. 8 • 715-282-6565, northwoodgolfclub.com • Driving range, pro shop, restaurant. Par 72

Pine Hills Golf Course opening when North Star Casino Resort can open • N9499 Pine Hills Drive, Gresham • 715-787-3778, pinehillsgolf.net • Driving range, restaurant, event space. Par 72

Pine Valley 229691 N. 136th Ave., Marathon. Take Hwy. O exit off Hwy. 29 • 715-443-2848, golfpinevalley.net • Driving range, Pro shop, bar, snack bar. Par 71

Pinewood Country Club 9000 Pinewood Valley Road, 20 miles north of Tomahawk, in Harshaw • 715-282-5500, pinewoodcc.com • Driving range, pro shop, PGA pro on staff. Par 72

Ridges Golf Course 2311 Griffith Ave., Wisconsin Rapids • 715-424-3204, ridgesgolfcourse.com • Driving range, pro shop, banquet facility. Par 72

RiverEdge Golf Club 10191 Mill Creek Dr., Marshfield • 715-676-3900, riveredgegolfcourse.com • Driving range, pro shop. Par 72

Sand Valley Golf Resort 1697 Leopold Way, Nekoosa • 888-398-8671, sandvalley.com • Two 18-hole courses (par 72 & 73) and 17-hole short course (par 51). Pro Shop, restaurant, bar.

St. Germain Golf Club 9041 Hwy. 70, 3 miles west of St. Germain • 715-542-2614, stgermaingolf.com • Driving range, pro shop, snack shop. Par 72

SentryWorld Golf Course 601 North Michigan Ave., Stevens Point • 715-345-1600, sentryworld.com • PGA on staff, driving range, pro shop, restaurants, year-round indoor practice facility. Par 72

Stevens Point Country Club (private) 1628 Country Club Dr., Stevens Point • 715-345-8900, stevenspointcountryclub.com • Driving range, swimming pool, tennis-pickleball courts, pro shop, PGA on staff restaurant and banquet facilities. Par 72

Timber Ridge Golf Club 10030 Timber Ridge Road. Just west of Hwy. 51, 4 miles south of Minocqua • 715-356-9502, timberidgegolfclub.com • Driving range, PGA pro, pro shop, restaurant. Par 72

Trapp River 243124 Hwy. WW, 10 minutes north of Wausau • 715-675-3044, golfinwausau.com • Driving range, PGA pro, pro shop. Par 72

Trout Lake Golf Club 3800 Hwy. 51, Arbor Vitae • 715-385-2189, troutlakegolf.com • Driving range, pro shop, PGA pro. Par 72

Wausau Country Club (private) 208 Country Club Road, Schofield • 715-359-6161, wausaucountryclub.com • PGA pro, driving range, pro shop, pool, restaurant, and banquet facilities. Par 71

Wisconsin River Golf Club 705 W. River Dr., Stevens Point • 715-344-9152, golfteriver.com • Driving range, pro shop, restaurant. Par 72

9 HOLES

Big Stone Golf Course 847 Golf Course Loop Road, Three Lakes. Hwy. 45 north to Hwy. 32, then east • 715-546-2100, bigstonegolfcourse.com • Pro shop, snack bar. Par 35

Black River Golf Club W5205 Hwy. O, Medford • 715-748-5520, blackrivergolf.com • Driving range, bar. Par 35

Club X to C W890 Hwy. C, Gleason • 715-536-1546, ClubXtoC.com • Pro shop, restaurant & bar. Par 33

Crane Meadows Golf Course 8103 Weston Ave. Weston • 715-355-1264, golfcranemeadows.com • Driving range. Par 36

Edgewater Country Club N10369 Echo Valley Road, Tomahawk. Exit 231 off Hwy. 51, 1 mile east • 715-453-3320, edgewaterccgolf.com • Driving range, pro shop, restaurant. Par 36

Hidden Waters Golf Course E4480 Hwy. 22-54, Waupaca • 715-258-5054, GolfHiddenWaters.com • Driving range, banquet hall. Par 36

Homestead Golf Course 3372 Hwy. 73 N., Wisconsin Rapids • 715-423-7577 • Pro shop, bar. Par 34 On Facebook

Maple Hills Golf Course N6621 Cardinal Lane, East of Wittenberg, exit 198 off Hwy. 29 • 715-253-2448, maplehillsgolfcourse.com • Restaurant & bar. Par 36

19th Hole Golf Course 9067 Hwy. 70 West, 3 miles west of St. Germain • 715-542-4042, 19thholesportsbar.com • Charming, small course with bar & grill, games room, 18-hole mini golf. Par 27

Quig's Maplewood Golf Course N9240 Hwy. 55, Pickerel. Northeast of Antigo take Hwy. A, then north on Hwy. 55 • 715-484-4653, Maplewoodgolfcourse.com and on Facebook • Driving range, pro shop, bar & grill. Par 36

Plum Lake Golf Club 3160 Clubhouse Road, Sayner • 715-542-2598, Plumlakegolf.com • Pro shop, driving range, historic clubhouse. Par 36

Rib Mountain Golf Course 3607 N. Mountain Road • 715-845-5570 • Restaurant and bar at Carmelo's, driving range. Par 32

X to C's Riverview Golf Course W11817 Highland Road, west of Antigo 4 miles on Hwy. 64 • 715-623-2663 clubxtoc.com • Practice facility, pro shop, snack bar. Par 36

Rhineland Country Club (private) 1699 Eagle St., Rhineland • 715-365-3200, rhinelandercountryclub.com • Golf pro, pro shop, restaurant. Par 36

Tee-Hi Golf Club 580 Tee-Hi Place, Medford • 715-748-3990, TeeHiGolfcourse.com • Pro shop, snack shop. Par 31

Tribute Golf Course 1001 Golf Club Road, Wausau • 715-675-3663, golfinwausau.com • Bunkers restaurant on site. Par 34

Tri-City Golf Course 3010 Golf Course Road, Wisconsin Rapids • 715-423-1380, tricitygolfcourse.com • Driving range, pro shop, bar & grill. Par 34

Amazing views, carved from rolling hills lined with beautiful trees and native grasses...this is what you will soon realize and what our members already know:

GREENWOOD HILLS CC IS MORE THAN JUST A GOLF COURSE.

We offer our members and their guests great course conditions and more playing options than any course in the area. Whether you are new to golf or a skilled, low- handicap player, we have a set of tees to fit your game.

We offer a wide variety of amenities including pickleball courts, fitness center, driving range, pool, hot tub, kid's wading pool, member only dining, practice greens, reduced or waived room fees, locker and club storage!!

Memberships accommodate individuals, families and corporate accounts. Don't forget about our social memberships!

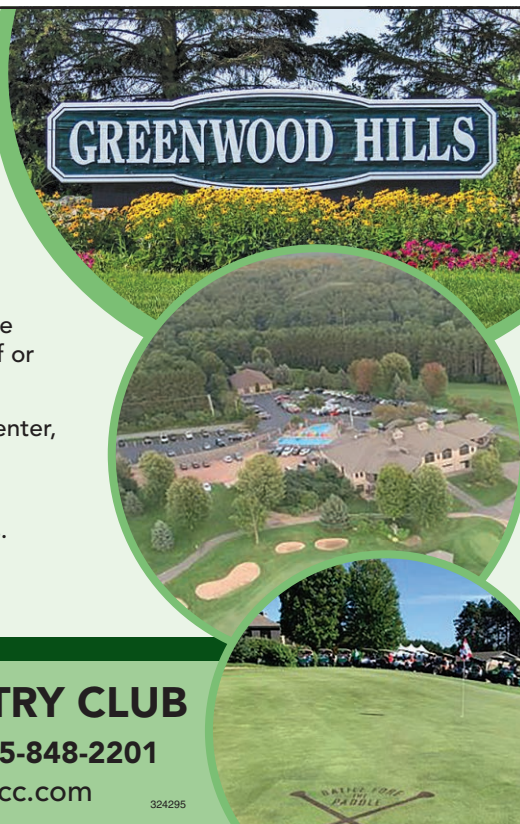


GREENWOOD HILLS COUNTRY CLUB

2002 Poplar Lane, Wausau, WI 54403 • 715-848-2201

Find us on or visit www.greenwoodhillsc.com

324295



Serving from our Italian and American menu

**Nightly Specials
New Updated
Menu!**

Carmela's
ITALIAN RESTAURANT

Dining Room & Lounge

The Rib Mountain Golf Course
& Driving Range

Located in
the Clubhouse
at the Rib Mountain
Golf Course & Driving Range

149841 Cty Rd NN
(715) 845-5570
At the foot of Granite Peak's
Ski Area

10-Time Passes
\$130 regular
\$110 jr. & sr.

Open Year Round
Closed Mondays & Holidays

362019

SKATEBOARD & BMX PARKS

- Oak Island Park**, Wausau 500 River Dr., just north of Thomas St. • Open (will be renovated in 2024, and may be closed at times during the summer)
- Kennedy Park**, Weston 6002 Alderson St. 8,000-square-foot skate and BMX park. Open dawn to dusk. Safety gear recommended. 715-359-9988
- Mosinee Skate Park** 701 11th St., Recreation Center Park • Open dawn–10 pm for skateboards, in-line skates. 715-693-2275
- Bukolt Park**, Stevens Point Bukolt Ave., across from boat launch • Open daily dawn to dusk. For BMX bikes without pegs, in-line skates. 715-346-1531
- Marshfield Skatepark** 905 N. Cedar Ave. at Braem Park • Open 8 am–10 pm. For ages 6+ on rollerblades, skateboards & BMX bikes. Helmets & pads strongly recommended. Lights from 8:30-10 pm. 715-384-4642
- Prairie River Skate Park**, Merrill 101 W First St., corner of Hwy. 64 and Polk St. • Open daily dawn to dusk. Lighted facility. 715-536-7313
- Funtime Skate Center**, 1307 E Main Street, Merrill • year-round indoor skate park and lounge, private business. Open afternoon/evening hours Mon, Wed, Fri-Sat.
- Witter Field**, Wisconsin Rapids At 8th and Chestnut Streets • Open 7 am–11 pm for skateboarding, aggressive in-line skating, BMX bikes. Helmets, safety gear recommended. Lighted. 715-421-8240
- Woyak Sports Complex**, Plover 2381 Cedar Dr., behind Boys & Girls Club • Open 9 am–10 pm. In-line skate, roller skates, skateboard & BMX. Helmets, wrist guards, & knee pads recommended. 715-345-5257.



376266.1.pdf

The file is missing!

FOR THE DOGS

PLACES ALL ABOUT THEM

Weston Dog Park Adjacent to Kellyland Park, north of Schofield Ave., off Fuller Street at 6100 Rogan Lane • 40 fenced acres, mowed paths ideal for both master and friend. Pet watering station, agility course, dog training and exercise area and waste bag dispensers. Dogs must be leashed going to and from the park, but off-leash within this and any dog park. Clean up messes. Dogs must be licensed, vaccinated, have identification tags. No dogs under 4 months, aggressive, ill or in heat. Open daily 6 am–11 pm. 715-359-9988.

Kronenwetter Bark Park 2350 Sunny Meadow Dr., within Friendship Park • Dogs must be licensed, vaccinated and good-tempered. Fenced, no separate small dog area. Bring water and clean up after your dog. Parking off of Kowalski Road. Open daily 7 am–10 pm. 715-693-4200.

Two Hearts Dog Park 224 Fourth St., Wausau. 1.2 acres, fenced area and separate small dog area for all dogs up to 25 pounds. Benches, waste bags, small dog area, drinking fountain, agility equipment and shelter. Open 6 am-11 pm.

Sandy's Bark Park, Rib Mountain 151221 Baltimore Lane, Wausau. Dogs must be licensed, vaccinated and neutered/spayed. No more than three dogs per person. 6 acres of field, granite path and wetland with fenced perimeter for off-leash play. Features water filler and dog waste stations. Clean up after your dog. Open dawn to dusk. ribmountainwi.gov

Point Dog Park 601 Mason St., Stevens Point. Dogs must be licensed, vaccinated, healthy. About 30 acres, with fenced-in area. Waste bag dispensers, garbage containers, benches. Dogs must be accompanied by a person age 14+ and must be leashed outside fenced area. Open daily 6 am–11 pm. 715-341-1136, stevenspoint.com

Standing Rocks Park dog exercise area East of Stevens Point 7 miles, between Custer Road and Bear Lake Road • Large fenced-in area with mowed trails. \$5 per dog daily, \$40 season; \$85 season for three dogs. 715-346-1433, co.portage.wi.us



Merrill Dog Park In the Merrill Area Recreation Complex, 1100 Marc Dr. • New 2.5-acre off-leash area, with separate spaces for small and large dogs. Limit three dogs per person. Dogs must be leashed when entering and exiting the facility. Fill holes created by dogs. No food or glass. No aggressive, sick or unlicensed dogs. \$2 donation. Open daily dawn–dusk. 715-536-7313.

Paws 'N Play Dog Park Corner of Peach Ave and 21st St., Marshfield • Several acres at the fairground. No aggressive dogs or dogs in heat. Must be licensed, immunized and kept on a leash until inside the park. Pick up all waste, fill any holes created by dog. No human food or glass, no puppies under 4 months or children under 8 years. Donations welcome. Open every day, except during fair. On Facebook

Room to Zoom Dog Park, 2550 Saratoga Street, Wisconsin Rapids • Opened in 2023, with 10 acres, small and large dog areas, paved parking lot. Pup water coming in 2024.



FX
ing & Recycling Co. LLC
675-0680

107 EVEREST AVE., BROKAW, WI
M-F 7:30 AM - 3:30 PM
FOR JUNK VEHICLES
ALL OTHER METALS ACCEPTED
UNTIL 3:45 PM

***** WE BUY COPPER *****

UNPREPARED STEEL
SHEET IRON
ALUMINUM CANS

NO TITLE NEEDED

COMPLETE JUNK VEHICLES

MUST BE LIEN FREE

- Junk Vehicles
- Unprepared Steel
- Sheet Iron
- Aluminum Cans
- Copper

*MUST HAVE CATALYTIC CI



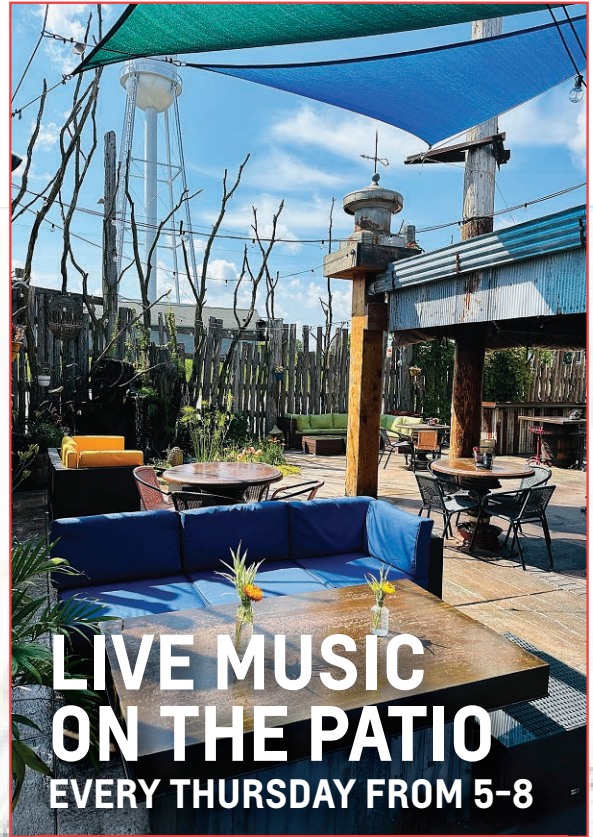
DIANE'S SOFT SERVE

OPEN
7 DAYS A WEEK

415 US Hwy 45, Birnamwood
715-449-3397



VOTED CENTRAL WISCONSIN'S #1 OUTDOOR DINING SPACE



**LIVE MUSIC
ON THE PATIO**
EVERY THURSDAY FROM 5-8



A STATE OF FOOD & DRINK.

 1239 SCHOFIELD AVE  WWW.SCONNIS.COM  715-241-7665

371897



BERRY FARMS

our guide to pick-your-own strawberry, blueberry and raspberry farms across central Wisconsin. Most also offer pre-picked. Strawberry season generally starts mid- to late-June and runs for only a few weeks. Raspberry and blueberry season begins in mid-July. Always call ahead of conditions. Berry patches sometimes get picked over and need a day or two for ripening.

Tip: Northern fields tend to ripen a few days later than those to the south. So if a Stevens Point-area berry patch is done for the season, you might still find some around Merrill and Antigo.

WAUSAU, MERRILL, MOSINEE AREAS

Engelberry Farm, Merrill 3 miles north of Merrill on Hwy. 107, just past Council Grounds State Park • Pick-your-own and fresh-picked strawberries for pickup. Weather and supply permitting. Call 715-536-9091 for picking times mid-June to mid-July or check our facebook page.

Gering's Garden Blueberry Farm, Mosinee 134144 Hwy. C • Pick-your-own and fresh-picked blueberries. 715-457-3010 • Check our facebook page for hours.

Kamenick Farms, Marathon 224131 Hwy. B. 2 miles south of Marathon City at intersection of Hwy B and N, a mile east of Hwy. 107 • Pick-your-own and fresh-picked strawberries, raspberries, blueberries; pumpkins in fall. Open daily 7 am–7 pm. Call 715-443-2134 for conditions/updates and also check our facebook page.

Krautkramer's Berry Farm 1299 Krautkramer Rd. Marathon. Take Hwy. 29 west, then south on Hwy. 107 to Krautkramer Rd. • Pick your own strawberries. Call ahead for hours. Also pre-picked, can call for pickup. 715-443-6773. Check our page on facebook

Lakeview Berry Farm, Mosinee/Lake DuBay area 203121 Bergen Rd. Off Hwy. 51, take Hwy. 34 right for 4 miles to Cty Rd. C take a right for 4 miles to Bergen Rd. • Pick-your-own and fresh-picked blueberries, currants, gooseberries, raspberries (several varieties), and rhubarb. Closed Mondays. Call ahead or check Facebook for updates. 715-457-2704 Lakeviewberryfarm.com

Norrie Lake Berries, Birnamwood 183270 Jessup St. From Hwy 29 east to Hatley, take left on Hwy Y going north. Right on Hwy DD. Right on Norrie Road. Right on Derham St. Right on Jessup St. Located on east side of Norrie Lake • Pick your own or pre-picked raspberries. Check current hours and picking conditions at 715-370-4884. On Facebook

Stroik's Lake Du Bay Berry Farm, Mosinee area 154802 Hwy. C. Off Hwy. 51, take exit 175 to Knowlton, 3 miles east on C • Pick-your-own or fresh-picked strawberries, raspberries, and fresh-picked blueberries. Children must be supervised. Cash only, no checks or credit cards. Open 7am–6pm daily, call for availability at 715-693-3943. On Facebook and at stroiksberryfarm.weebly.com

Utech's Rainbow Farms, Merrill 3880 Rainbow Dr. Take Hwy. K north of Wausau 10 miles, then east on Rainbow Drive • Pick-your-own and fresh-picked organic blueberries and raspberries. Usually open daily 9-5pm during peak time, starting mid-July. Call ahead. 715-536-7271

STEVENS POINT, WISCONSIN RAPIDS AREAS

Arnold's Strawberries, Rudolph 343 Hwy. PP, east of Hwy. 34 • Pick-your-own strawberries from a farm owned by the same family for 100+ years. Open 6:30 am daily. 715-435-3322, arnoldsstrawberries.com, and on Facebook

Chet's Blueberry Farm, Custer Corner of Ninth Street and Hwy. J • Pick-your-own blueberries. Check Facebook or call ahead for picking times and days. 715-340-4989. Facebook: Chet's Blueberry Farm

Roehrborn's Berry Patch, Marshfield 10389 Pine Lane. 2 miles west of Marshfield on Hwy. H, south on Robin Road a half-mile to Pine Lane • Pick-your-own strawberries and fresh-picked at

Weber's farm store (9-1pm or until sold out) Open 7:30 am–12pm and 4–6 pm. Call for picking conditions and hours at 715-384-4847. Updates on Facebook.

380930.1.pdf

The file is missing!

TENNIS & PICKLEBALL COURTS



WAUSAU AREA

Alexander Airport Park 625 Lakeview Dr., near Wausau Municipal Airport, in city's southeast side • 2 courts, lighted, painted for pickleball (The courts are expected to undergo renovations this summer.)

Forest Park 3100 Ninth St., Wausau's northeast side • 2 courts, unlighted, also pickleball

Marathon Park 1201 Stewart Ave., Wausau, near the fairgrounds • 9 full pickleball courts, no tennis

Memorial Park 505 Memorial Park Rd., off Sturgeon Eddy Road, southeast side of Wausau • 2 courts, lighted, also pickleball

Oak Island 500 River Dr., Wausau, just north of E. Thomas St., near downtown • 6 courts, lighted

Pleasant View 1221 Sumner St., east of 10th St. on Wausau's east side • 2 courts, lighted

Riverview Park By Riverview Elementary School, Wausau's northeast side • 2 courts, unlighted

3M Park 405 Park Blvd., off S. Third Ave., on Wausau's near west side • 2 courts, unlighted, painted for pickleball

Wausau East High School 2607 N. 18th St., across from school entrance • 14 courts, unlighted

Wausau West High School 1200 W. Wausau Ave. • 10 courts, unlighted

South Mountain Elementary 5400 Bittersweet Rd., Rib Mountain • 2 courts, unlighted, painted for pickleball with portable nets

Liberty Park 223978 Lakeshore Dr., Rib Mountain. Hwy. N to Morning Glory Dr., to Lilac Lane and Lakeshore Dr. • 2 courts, unlighted

Rib Mountain Elementary 150801 Robin Lane • 2 courts, lighted

George Street Park East of Bus. Hwy. 51, in Rothschild, at Military Road and George St. • 1 court, unlighted

D.C. Everest Jr. High 1000 Machmueller St., Schofield • 6 courts, unlighted

D.C. Everest Sr. High 6500 Alderson St., Weston • 6 courts, lighted

Greenheck Field House (indoor) 6400 Alderson St., Weston • 2 courts can be set up by reservation at 715-359-6563

Friendship Park 2350 Sunny Meadow Dr., Kronenwetter • 2 courts, unlighted

Sunset Park 2390 Terrabonne Dr., Kronenwetter • 2 courts, unlighted

STEVENS POINT AREA

Ben Franklin Jr. High School 2000 Polk St., Stevens Point. Corner of Water and Polk streets • 6 courts, unlighted

Goerke Park 1.5 miles west of Hwy. 10 exit, Stevens Point • 6 courts, lighted, three painted for pickleball

Mead Park Corner of W. Clark (Hwy. 66) and W. Whitney, Stevens Point • 2 courts, lighted, painted for pickleball

SentryWorld Sports Center 601 N. Michigan Ave., Stevens Point • 6 indoor courts open to the public. Daily 9 am–5 pm. Pricing, details at sentryworld.com, 715-345-1600

Stevens Point Area Senior High 1201 N. Point Dr. • 8 courts, unlighted

Easlan-Weslan Park Between Post Rd. and Hoover Ave., Plover • 1 court, unlighted

Little Plover River Park 1501 Hoover Park (off Hoover Ave.), Plover • 2 courts, lighted

Woyak Sports Complex, Plover 2381 Cedar Dr., behind Boys & Girls Club • 2 courts, lighted. 715-345-5257

UW-Stevens Point 2100 Main St. • 8 unlighted outdoor courts in DeBot Tennis Center on Reserve St.

MERRILL

Merrill Senior High School 1201 N. Sales St. • 8 courts, lighted

Ott's Park 501 N. Foster St., at the end of Foster St. on Wisconsin River • 2 tennis courts, 6 pickleball courts, all lighted

374251.1.pdf

The file is missing!

GET THE GEAR

Don't own? No problem.
Here are the local places to rent kayaks, canoes, paddleboards and even camping equipment



RENT.FUN SELF-SERVICE KAYAK RENTALS

D.C. Everest Park, 1800 S. 3rd Avenue, Wausau
Kayak rentals cost \$20 per hour
Hours from 7 am-7 pm daily
Rentals are self-service through a machine located at the park and the Rent.Fun mobile app

DIVEPOINT SCUBA

Downtown Stevens Point, 715-344-3483
• Scuba equipment rentals

TIKI BEACH BAR & GRILL

1126 Hwy. DB, south of Mosinee on Lake Dubay. 715-341-2232, tikibeachllc.com. Open daily.
• Paddleboard and kayak rentals.

BAHAMAS LOUNGE

1766 Hwy. HH, northwest of Stevens Point, 715-295-0393
• Bar and restaurant on Wisconsin River offers kayak and canoe rentals.

SCHMEECKLE RESERVE, STEVENS POINT

Rentals through Visitor Center at 2419 North Point Dr. , 715-346-4992.
Friends members receive \$5 discount off. Price and item details at uwsp.edu (search Schmeeckle).

- Canoe or kayak on Lake Joanis: \$15 day, \$10 each additional boat
- Canoe, kayak, tandem kayak, and paddleboard packages start at \$25-\$30 day with discounts on additional boats
- Also available: Canoe trailers, dry packs, camping sleep pads, tents, and backpacks

COUNCIL GROUNDS STATE PARK

1.5 miles northwest of Merrill on Hwy. 107
Council Grounds rents some equipment. Call for information: 715-536-8773, dnr.wi.gov.

SUP THE RAPIDS

715-570-2989, suptherapidsllc.com
Located on the Wisconsin River in Wisconsin Rapids. Stand-up paddleboard classes, tours and lessons, as well as rentals. Deliver and pick-up from site of your choice within 15 miles of Wisconsin Rapids area.
• Stand-up paddleboard rental: \$20/hour, \$30 for 3 hours, \$50 for 8 hours, \$60 for 24 hours, \$150 for 3 days. Rentals include paddle and life jacket
• Classes start at \$20; Historic River Tours start at \$30

COASTERS CYCLE WORKS

715-224-3522, Tomahawk
Located in downtown Tomahawk. Free delivery within city limits.
Bicycle rental: \$20 first day, \$10 each additional day
Paddleboard rental: \$35 first day, \$25 each additional day
Kayak rental; \$30 first day, \$25 each additional day
Fat bikes and Ebikes: \$40 per day

380959.1.pdf

The file is missing!



MOSINEE BREWING



A TASTE OF JAMAICA

FOOD TRUCK LISTING

A Taste of Jamaica – Jerk chicken tacos, jerk chicken w/rice & peas, jerk barbecue wings, and oxtails and curry goat. Contact 413-328-1088, Facebook, Instagram and tastejamaicawi@gmail.com

C.O.W. – Beer battered deep fried cheese curds. A large variety of special sauces and our newest popular sauce is Dill Pickle ranch. Contact us at curdsofwisconsin@hotmail.com Facebook or 715-432-2011

Mosinee Brewing – All menu items made from scratch, no corners cut! Our specialty is our hand cut French fries! Contact bill@mosineebrewing.com and our Facebook page.

A Taste of Manila – Authentic, made-from-scratch Filipino cuisine BBQ grilled chicken and pork skewers, pork Lumpia rolls, Chicken Pancit Noodle and Garlic Fried Rice. Many gluten free options! Check out our full calendar and FOLLOW us on www.facebook.com/ATasteofManilaWausau



NATIONAL
FOOD TRUCK DAY
JUNE 28, 2024

Urban Street Bistro – Mobile restaurant and catering. A wide array of mouthwatering menu items. urbanstreetbistro@gmail.com and Facebook

Pizza Kiln – Specializing in wood fire pizza's Contact us on Facebook or gretchen@clayhouseonline.com

Mitch's Texas Taco's – Texas style tacos and chili served from the food truck, hot and fresh! Contact us on Facebook & Instagram

Yummy Thai – We serve fresh, authentic and high quality Thai food. Mainly located in the Merrill and Tomahawk area through the summer. Contact us on Facebook or bbcloverclub@gmail.com

Mergets Mouthwatering Mayhem – Mobile kitchen specializing in smoked meats Contact us on Facebook

Old Reliable – Variety of menu items all made from scratch! Contact us on Facebook & theoldreliable@gmail.com

Chef's C's Munchie Mobile – Will be trucking along all summer with all your favorite treats n' snacks. You can find us every Thursday at the Levitt Amp concert series and every Friday night at Central Waters in Amherst. Follow our Facebook page for updates on all of our stops and locations throughout the season! Interested in having the Munchie Mobile at your event? Email us at fatherfats945@gmail.com

Chang Best Eggrolls – Our egg rolls are made daily with the freshest ingredients and sauces. Try the best Hmong egg roll in the Wausau area. Also serving crab rangoon, and fried rice. Contact us on Facebook or changbesteggrolls@gmail.com

Hanuman Express – A food truck bringing authentic Thai cuisine and Thai inspired dishes to the street. Specialties include crispy fried pork, honey-garlic chicken and Thai curry. Catering is also available. Contact us on Facebook or hanumanmobilecatering.com

Palmetto Grill – Serving authentic southern soul food. Chicken wings, pork chops, fried cabbage, cornbread and much more. Menu will be changing throughout the summer Follow us on Facebook, Instagram and contact us at palmettogrillcs@gmail.com

382025.1.pdf
The file is missing!

C.O.W.
Curds Of Wisconsin

Fresh Beer Battered
Deep Fried Cheese Curds
curdsofwisconsin.com
curdsofwisconsin@hotmail.com

Bruce & Tara Bartus
Wausau WI, 54401
(715) 432-2011

261016

380525.1.pdf

The file is missing!

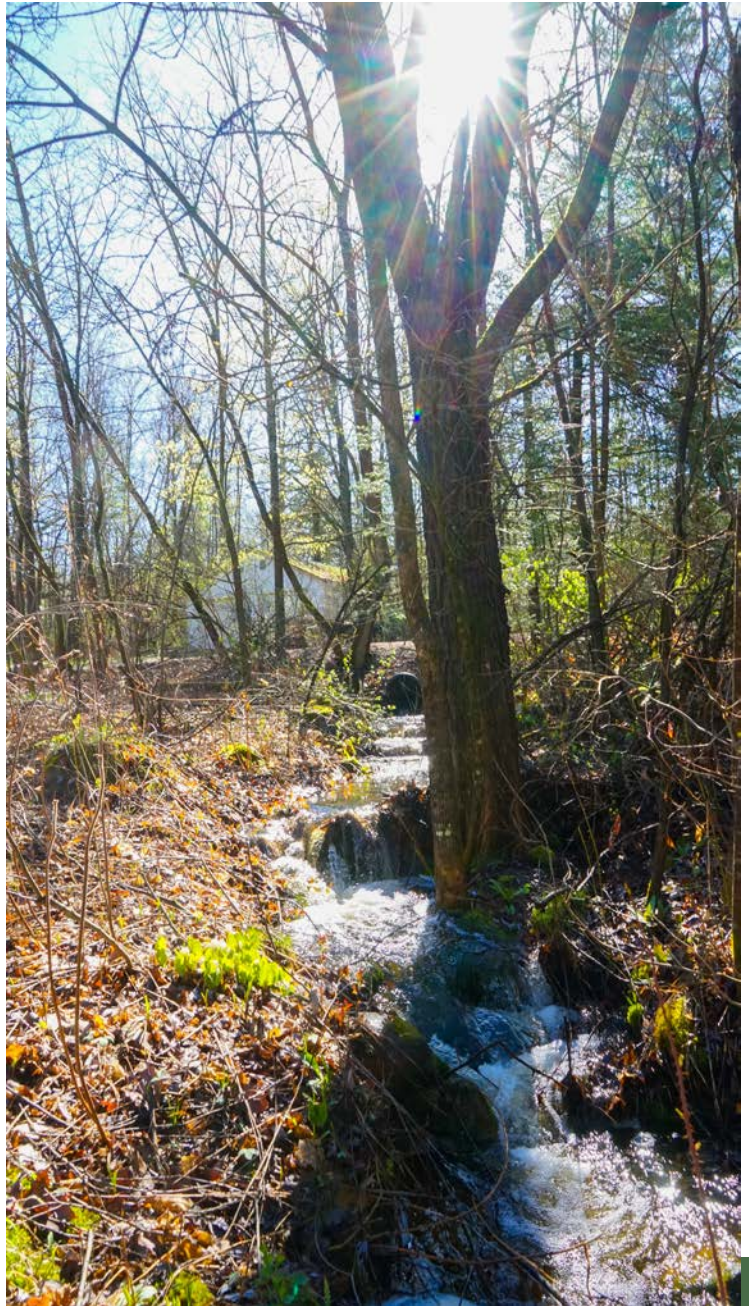
GRANDFATHER FALLS — A FUN DAY HIKE FULL OF SURPRISES

**By Andrea Larson,
Ironbull Executive Director**

I grew up less than an hour from Grandfather Falls, and I have to admit, I didn't know it even EXISTED until a couple of years ago. Ever since, it's been on my radar to check out. Unfortunately, it seemed just too far away to be a convenient quick outing, but at the same time not far enough away to justify a full-blown weekend of activities. The stars finally aligned after my husband suggested a family hike after he spent the prior evening and all morning filing taxes. Although he suggested a local staple, hiking "The Quarry" at Rib Mountain State Park, he was open to finally check out Grandfather Falls on the Ice Age Trail. This was perfectly in line with my recent bug of exploring long distance trails such as the Superior Hiking Trail, North Country Trail, and Ice Age Trail. (Little did he know that I had been listening to a podcast playlist on these topics!) With the in-between spring weather, all of the local mountain bike/fat bike and cross country ski trails are closed, making hiking one of the outdoor activities during the spring thaw / mud season.

DECISIONS, DECISIONS

As my husband knows, I love looped trails. Like other segments of the Ice Age Trail, the Turtle Rock Segment is also point-to-point; however, after examining various map layers in CalTopo, I determined we had several loop options. We could 1) hike the entire 5 mile segment together then I could run back on the road to the car to pick up the family, 2) cut off the final mile of the segment by bushwhacking north through the Lincoln County Forest to make a loop when we pass directly south of the trailhead (this was my vote and what we chose since it was the shortest overall distance and most adventurous!), or 3) walk back on an old logging trail on the USGS map. Since I didn't know the conditions of the



trails and if the old trail would even be passable, we decided to reserve our decision for when we were literally standing at the fork in the trail. Although I generally love to complete hikes, based on the topo maps it didn't appear that the final mile would be as exciting as bushwhacking. Luckily when we met our fork in the trail, the rest of the family agreed! I wasn't surprised after seeing the kids excitedly dig through their drawers for bushwhacking clothes like an excited dog uncovering a bone in the yard before we headed out. What are bushwhacking clothes? Pants that wouldn't collect burrs, jackets that we wouldn't mind tearing as we go through the brush and climb rocks, wool socks in case the bogs aren't fully frozen and our feet get wet, and dry-wicking layers for the blustery afternoon.

After spending time inside at the computer, I went outside for some fresh air and felt more compelled to go inside with the overcast skies



and cold temperatures (compared to days before with beautiful sunshine and warm temperatures!) I second guessed our intended afternoon outing. As the sun peeked out on our drive to the trailhead, I thought it may be a good day for a hike after all. The moment I opened the car door,

I was thankful I had packed warm gloves and layers, since the blustery winds would have otherwise made our hike unpleasant had we not prepared. On the flip side, had the temperatures been warmer, the trek through the bog wouldn't have been a viable option.



HERE TO HELP YOU MAKE THE MOST OF YOUR SUMMER WITH:

- Rewards Checking
- Fast, **LOCAL** loan decisions
- Unmatched service
- Convenient online & mobile banking
- Free ATMs
- Convenient Locations

STOP IN TO SEE WHY WE SAY **MEMBERSHIP MATTERS!**

**Membership eligibility is required*

Branches located in:

Mosinee, Kronenwetter, Marshfield, Wisconsin Rapids, Stevens Point

Follow Us On

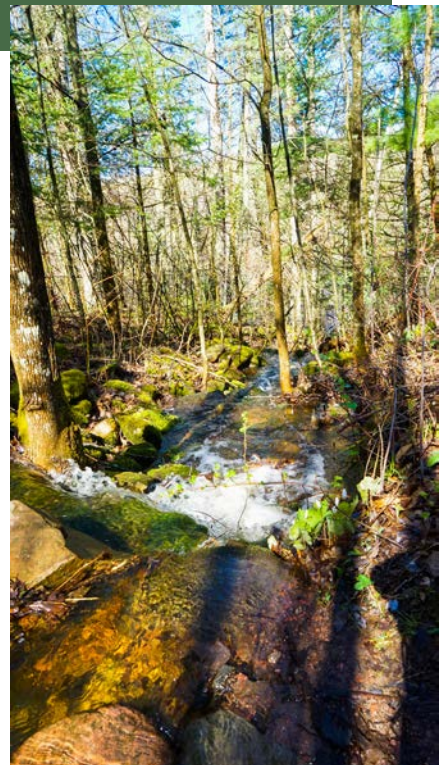
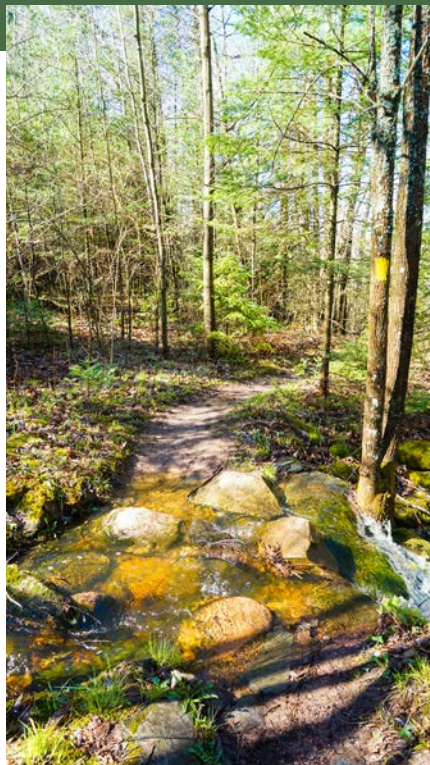


www.valleycommunities.org



Insured by NCUA





MULTI-FUNCTIONAL

I had printed out a USGS map so I'd not only be prepared with our route options (especially with lack of cell phone service), but could work on my navigation skills as we hiked. My husband also made the hike multi-functional by carrying a ruck sack with 25 pounds of weights loaded. I took my Fastpackher pack and gladly loaded luxuries such as spare shoes for my youngest, way more water than we needed, and heated gloves and handwarmers with the goal of getting in some (lightweight) rucking in preparations for future trail adventures such as adventure races, a possible FKT attempt on Wisconsin's North Country Trail, and Marji Gesick 200 run. I hoped to load up oodles of snacks but as soon as my daughters saw me loading up my pack, they all begged to carry packs of their own. With adventure racing season just around the corner, I agreed that it would be a good idea for them to wear their own packs since they will need to in races.

Between my mapreading, my husband's rucking, and my daughters' offtrail discoveries, our 5 year old had no trouble maintaining pace. In fact, it wasn't until we popped out of the woods from our 1/2 mile bushwhack through the bog that he dropped back. He staggered onto the trail having the proudest, most tired expression I've seen on his face. Yet he did not utter a single complaint on the hike, even as we stepped over logs, wove between brush, and tiptoed through semi-thawed marsh - all at the same time! Surprisingly, he didn't conk out on the drive home, but he had no complaints about an early bedtime!

MANAGING EXPECTATIONS

On the drive to the trailhead, I explained to the kids that I had never been here and had no idea what to expect. I was glad the second we stepped on the trail that I had primed them. Despite examining several layers of maps, none of them include snowmobile trails specifically. Where we parked across the road on "Log Road" was certainly

not a road, but a snowmobile trail. We were all disappointed as we began strolling down the snowmobile trail rather than adventuring on singletrack (luckily it didn't last long!)

MANY DISCOVERIES!

Soon, we were paralleling an unnamed creek which would empty into the Wisconsin River and hiking on single-track. The kids seemed to be magnetised with all sorts of things pulling them off the trail. Although we frequently bushwhack, I felt bad telling them they needed to stay on the trail through the private properties, since we didn't want to compromise the relationship with the generous private property owners who allow the trail through their property! My oldest was drawn to any ice, constantly using sticks to break through the thin ice. I had never seen my middle child this excited about hiking; she climbed up every rock she could find, often towering over us. What a proud mom I was as she completely immersed herself in the adventure! And she can't wait to do her first adventure race!

After about a mile, we met up with the Wisconsin River. We stopped to take in the view (multiple times). There was no risk of losing the trail; often I could spot three or four blazes on trees! Despite it being early spring, the trail had few sticks on the trail, which made me wonder of the Northwoods Chapter of the Ice Age Alliance had recently maintained the trail.

GRANDFATHER FALLS DAM

I threw out a few fun facts that I had recently learned through the Great Pinery Heritage Waterway. Did you know that the Wisconsin River has more dams than any river in the world (26 hydroelectric dams), making it the hardest working river in the world? Be warned: Although Grandfather Falls drops 89 feet over the course of a mile, making it the biggest falls on the entire 420 mile Wisconsin River, I knew not to expect a towering waterfall, but rather a series of rapids. (For more history of Grandfather Falls check out a local historian's take here.)

When we reached the Wisconsin Public Service (WPS) dam, I gave the kids a quick lesson on conversion of energy (water/hydro to mechanical to electricity) that occur at a hydroelectric dam. With virtually no snowmelt, the river levels were low and the dam wasn't impressive, despite it generating more electricity on this river than any of the other 25 dams (totaling 101,692 megawatts which is enough to power almost 34,000 homes!). I found myself looking for ways to rock hop across the river where we'd occasionally see a car driving and a few people fishing, but the frigid waters were adequate to keep me off the rocks.

HEADING BACK

After a mile along the river, the kids had no problem making the climb away from the river where we turned back onto the snowmobile trail. We strolled back onto singletrack onto subtle landscape. At our attack point for our



bushwhack, we found an old logging road. Since it was in the general north direction we decided it would be drier and easier walking with only occasional downed trees compared to the constant downed trees in the woods. Once we felt we were weaving too far west, we stepped off trail for our final leg, roughly a 500 meter bushwhack. In my opinion, this extra obstacle kept the kids more engaged than had we continued meandering on Ice Age Trail. Nonetheless, I have hiking the next segment, Averill-Kelly Creek Wilderness Segment, on my radar!

MARVELING AT THE POWER OF THE BEAVER!

We all marveled at the power of the beaver as we hit the original Ice Age Trail that was currently rerouted due to flooding. Now, as we rejoined the snowmobile trail, we had a new appreciation for the flat, wide, and cleared trail back to the car that we had grumbled about earlier!

We had a mix of favorite parts of the hike - observing an eagle swooping for fish in the river, spotting fresh beaver stumps littering the trail, enjoying the vibrant green moss and ferns, and of course scrambling up rocks! For me, this hike encapsulates what sorts of discoveries can be just down the road! I'm so glad we ventured outside the comfort of our home, layered up, and

chose to take a completely new adventure, not knowing what we'd experience! Despite frequently camping at Council Grounds State Park, located just down the road, growing up, I was amazed at the gem I had missed, but thankful my kids discovered!

Andrea Larson is the executive director of IronBull and a contributor to City Pages.

SUMMER FUN
IN
AMHERST

★ **JUNE 28**
• **TRBA WINE WALK** •

SEPTEMBER 7
★ • **CELEBRATE AMHERST** •

TRBA
Tomorrow River
Business Association

★ **FIND MORE AT**
FACEBOOK.COM/TOMORROW
RIVERBUSINESSASSOCIATION
OR ONLINE AT
WWW.TRBA.FUN

300100

MUST LIST

CONCERTS ON THE SQUARE

JUNE 5-AUG. 28
400 BLOCK, WAUSAU

It's just not summer without the Concerts on the Square series! They're a great excuse to kick back in the middle of the week with your lawn chair, a cold brew and take in some tunes under a summer breeze. And, there will be plenty of food trucks on hand in case you get hungry. wausauevents.org

Shows run 6-8 pm rain or shine, and may move to White-water Music Hall through a new partnership if there is bad weather. No pets and no smoking. Buffet tables are prohibited because of space issues. Keep an eye on Wausau Events' Facebook pages for details or changes.



June 5: Hyde

June 12: The Hucksters

June 19: Brad Emanuel Band

June 26: Dig Deep

July 3: Open Tab

July 10: Rising Phoenix

July 17: Brass Differential

July 24: Johnny and the MoTones

July 31: Copper Box

Aug. 7: Mama Ginger

Aug. 14: Conscious Pilot

Aug. 28: Hip Pocket

378168.1.pdf

The file is missing!



Marathon Park | Wausau, WI

WISCONSIN VALLEY FAIR 2024

July 30-August 4



Tuesday
Night Ranger



Wednesday
LOCASH



Thursday
Gabby Barrett



Sunday Demo Derby
Friday and Saturday
PRCA Rodeo

Tickets and Admission

Season Admission: \$27/\$30 at the gate

Season Parking \$18

Unlimited Ride Voucher \$30/\$35 at the gate

Daily admission at the gate:

\$8 before 1 PM/\$12 after 1 PM

Children 10 and under are always free!



Visit us at wisconsinvalleyfair.com for more information

WAUSAU PRIDE

MUST LIST

JUNE 1

THE 400 BLOCK, WAUSAU

This annual event is becoming a summer mainstay, and keeps growing. Stop down to the 400 Block and show pride in who you are, or support your LGBTQ friends and neighbors. The 400 Block this day transcends into a rainbow flag extravaganza with multiple vendors and information booths (11:30 am-2:30 pm); a teen pride event at Whitewater Music Hall (1-4 pm) which includes a teen-only open mic and a family friendly drag show; and a big Wausau Pride at Night drag show at the Central Wisconsin Convention and Expo Center in Rothschild. The Wausau Pride at Night featured performer is Sapphira Cristal, who appeared on the 16th Season of RuPaul's Drag Race. Check out www.wausaupride.org for more details.



At Rural Virtual Academy we provide every family...

- Flexibility to school when it works for you
- Individualized approached for every child
- Freedom to choose your children's curriculum
- An education safe from bullying
- 100+ free in-person events to socialize & learn
- Over 1,000 high school courses to choose from
- A laptop for each student
- Reimbursement for internet access



888-801-2666

www.ruralvirtual.org

Call us or visit
our website to
learn more!

We provide all this
tuition-free because
we are a public
PreK-12 school!



SAY HELLO TO SUMMER!



EXPIRES 09/02/2024

Enjoy one free dillybar!

FREE

Present this voucher at the **Thomas St. Dairy Queen** in Wausau, WI to receive a complimentary dillybar
all available flavors
Limit one coupon per special, per customer, per day



EXPIRES 09/02/2024

Enjoy one free dillybar!

FREE

Present this voucher at the **Thomas St. Dairy Queen** in Wausau, WI to receive a complimentary dillybar
all available flavors
Limit one coupon per special, per customer, per day



EXPIRES 09/02/2024

Enjoy one free dillybar

FREE

Present this voucher at the **Thomas St. Dairy Queen** in Wausau, WI to receive a complimentary dillybar!
all available flavors
Limit one coupon per special, per customer, per day

DAIRY QUEEN

145 E THOMAS ST.
WAUSAU, WI 54401

Clay Corner Studio

CLASSES FOR ALL AGES!
WALK-IN FUN EVERYDAY!

CLAYCORNERSTUDIO.COM

JOIN THE FUN THIS SUMMER!

377916

MUST LIST



TASTE 'N GLOW

JULY 12-13
141678 STETTIN DRIVE, STETTIN

Well, it almost looked like for a while there that the annual Taste N' Glow festival wasn't going to happen this year. The two who started it after Wausau Events canceled the 2021 Balloon Glow and Rib Fest decided they were done. But the Taste N' Glow board had other ideas, and the festival is still on! The board says this year they plan on focusing on gourmet local food and of course the balloons we've all come to love. Plenty of parking or take the shuttle for service right to the front of the event. Full details weren't available as of press time. tasteandglow.com

Lisa's at Lakeside

Weekly Specials:

FRIDAY - FISH FRY
SATURDAY - PRIME RIB
SUNDAY - MORNING BREAKFAST
BROASTED CHICKEN
(STARTING AT 10:30AM)

RESTAURANT & BANQUET HALL
214857 Co. Y on Pike Lake • 715-446-3730
Paul & Lisa Wierzba
cookie4lw@gmail.com • LisasatLakeside.com

378911

SERVING YOU FOR 66 YEARS!

Sam's Pizza

"It's a Family Tradition"

Serving Pizzas The Way You Like Them Since 1958

DINE IN • CARRY OUT • PART BAKED
sampsizzaofwausau.com

715-842-3165
111 ELM WEST SIDE

715-355-5800
5811 BUS 51 SCHOFIELD

Voted **"BEST PIZZA"** 26 Years in a Row!

BEST OF...

Book your next party at Sam's Pizza in Schofield. Party rooms available.

CONCERT IN THE CLOUDS

**JUNE 29-AUG. 11
RIB MOUNTAIN AMPHITHEATER**

When I think of Rib Mountain, for the rest of my life I will always think of the late radio host Glen Moberg saying the phrase “High atop Rib Mountain...” This series, called Concert in the Clouds, is just that. The Rib Mountain amphitheater is a great place to chill out, take in some music and enjoy the beautiful scenery of the Wausau area from up above. This year’s lineup has some good ones: local country crooner Billy Bronsted, plus Sam and the Strays along with Andy Z and the Swinging Monkeys will grace the Rib Mountain venue. Concerts are free but a state park vehicle pass is required to park. ribmountain.org

Lineup

June 29: Billy Bronsted (6-8 pm)

July 20: Sam and the Strays (6-8 pm)

Aug. 11: Andy Z and the Swinging Monkeys (5-7 pm)



BILLY BRONSTED

JOIN OUR TEAM



Looking for full-time
Log/Pulp CDL Driver
must know log species

Grezenski Forest Products
Call 715-344-0878

<http://www.grezenskiforestproducts.com>

375310



**All of us at
Clean Slate
Coffee House
would like
to thank
the City Pages
Readers
and
our Loyal
Customers**



**FOR VOTING US
THE BEST COFFEEHOUSE/CAFÉ!**

We Appreciate Your Business!

Jen Fox – Owner
1027 E. Grand Ave., Rothschild
715.298.0394
cleanslatecoffeehouse@gmail.com

188277



PIZZA ON THE FARM THROUGH EARLY NOVEMBER STONE ACRES FARM, ATHENS

It's one of those things that is almost always on people's summer Must list: Pizza on the Farm nights at Stoney Acres. Watching the sun set on the horizon as it shines through the vines while sipping a glass of beer brewed right on site by expert brewmaster Josh Wright (The Pineapple IPA on tap as this goes to press is easily one of my top five favorite beers of all time, but don't you go drinking it all on me!) and the smell of wood-fired pizza fills your nostrils — well that's just about as good as summer gets. Plus, the farm also hosts live music, so check out stoney-acres.farm/pizza-on-the-farm for the whole lineup.

Alternatively, Pizza in the Orchard at Rock Ridge Orchard in Edgar is another great option for a Thursday night, also with live music. See Rock Ridge Orchard on Facebook for the full lineup of events and performers.

GREAT BREWS. GREAT FOOD. GREAT VIBES.

**PERFECTING THE
PUB EXPERIENCE
SINCE 1994.**

Whether you're looking for a classic German Pilsner & curds, or an Emerald Isle Stout & steak, we have tasty options for the entire crew. Swing by for a happy-hour pint or stay for a meal with friends whenever you're in need of a great time.

OPEN 7 DAYS A WEEK, M-F 11 A.M. TO CLOSE

BROWSE ALL OUR BEERS AND MENU AT GREATDANEPUB.COM



Great Dane Pub & Brewing Co. | 2305 Sherman St., Wausau | 715-845-3000

373765

MUST LIST



CHALKFEST

JUNE 22-23, 400 BLOCK, WAUSAU

When the City Pages offices were downtown, it was almost a required ritual to take a lunch-time walk to the 400 Block to check out the transformation of the space into a concrete gallery. Some of the pieces artists downtown create are truly incredible. (And it only lasts for a few days because they come along and spray it off - otherwise the chalk dust gets everywhere.) Chalkfest is back and kind of gets its own weekend now. Now you have no excuse to make your way downtown to check out the amazing creations our local talent pull off. For those of you who are aspiring artists, you can check out wausauevents.org for online registration (Cost is \$25). There are also children's chalkfest options. Wausauevents.org.



A lot's gonna change

You've got this!

Get the best start for you and your baby with a free personal nurse.

greatfamilywi.org



Nurse-Family Partnership

- CHIPPEWA COUNTY PUBLIC HEALTH
- DUNN COUNTY HEALTH DEPARTMENT
- EAU CLAIRE CITY-COUNTY HEALTH DEPARTMENT
- MARATHON COUNTY HEALTH DEPARTMENT

Western Wisconsin Nurse-Family Partnership Consortium | www.greatfamilywi.org

325164



UNCOMMON *pints*

Summer Music Series

EVERY THURSDAY • 6:30PM

Food Truck Will Be Open • If Raining, Music Will Be Indoors!

JUNE 6TH <i>Roger Lee</i>	JUNE 13TH <i>Open Tab</i>	JUNE 20TH <i>Tim Tesch</i>	JUNE 27TH <i>Heart Strings</i>
JULY 4TH <i>Closed</i>	JULY 11TH <i>Mattea Joy</i>	JULY 18TH <i>Foxfire Affair</i>	JULY 25TH <i>Aaron Lee Kaplan</i>
AUGUST 1ST <i>Bradley Sperger</i>	AUGUST 8TH <i>Brady James</i>	AUGUST 15TH <i>Mia & Jordan</i>	AUGUST 22ND <i>The Drivers</i>

UNCOMMON *pints*

27 Brown Blvd, Rothschild, WI 54474
(715) 298-1671
Follow us on

371219

JAZZ ON THE RIVER

JULY 9-AUG. 27

KICKBUSCH PLAZA, WAUSAU

Jazz is back! The River Valley Jazz Society started doing these shows prior to the pandemic, bringing some local and regional jazz greats to the Kickbusch Plaza behind the Marathon County Public Library. Stop in most Sunday evenings to enjoy a little jazz on the portable stage that's put out every year on the plaza, bring a picnic and some drinks, and enjoy jazz from musicians including the Sara Rifleman Trio, Bob Kase, Jeff Erickson and Daddio (the latter being a great name for a jazz group!). 5-7 pm. Free. There may be a rain location but it hasn't yet been determined. www.rivervalleyjazz.org

July 14: Tim Buchholz Quintet

July 21: Daddio

July 28: Bob Kase Quintet

Aug. 4: Ziji

Aug. 11: Janet Planet

Aug. 18: Jeff Erickson (Quartet)



JANET PLANET

EVENT IN BEVENT
JUNE 29 & 30, 2024
ST. LADISLAUS PARISH
Jct of Hwys 153 & Y

Music, Food, Refreshments, Games, Cherry Tree, Bounce House, Cash Raffles, Mini Raffles, ATV Raffle, Kountry Kafe, Train Rides, *Bingo Sunday at 12 noon in the Church Hall & Much More!*

Saturday - June 29
(grounds open at 5pm)
4:00pm Indoor Polka Mass with **Maroszek Bros.**

Music on the grounds
5:00pm - 8:00pm **Maroszek Bros.**
8:00pm - Midnight **Blame it on Waylon**

Sunday - June 30
10:10am Indoor Polka Mass with The New Generation

Music on the grounds
11:00am - 6:00pm **Alternating:**
The Jerry Schmitt Band - Country Music
The New Generation - Polka Music

Grilled Chicken Dinner starting at 11:00am in the tent next to the school



375568

381838.1.pdf
The file is missing!

LOGJAM

AUG. 9-11
RIVER PARK, MOSINEE

LogJam is one fascinating event. It combines some very old-school historical reenactment — folks dressed as and working as blacksmiths, pioneers and other early Wisconsin types, some of them truly acting in character, which is always a trip — with fun events that make it a little party in the middle of Mosinee. It's a great family event that also can be really fun for adults. logjamfestival.org



Friday night: Jerry Schmitt
Saturday afternoon: Handpicked Bluegrass
Saturday night: 49 Deluxe
Sunday: Balsam Road Ramblers

375978



SUNSETPOINT WINERY

201 Water St, Stevens Point WI, 54481

Enjoy our **Wines** by the glass, bottle, or try a tasting flight. We have summer wine slushies too!

» **Music & Fun Events!**
 Visit SunsetPointWinery.com
 and follow us on [Facebook](#) for up-to-date information.



Tours are on Saturdays at 3:30pm
 Call 715-544-1262 for reservations.

Open 7 days per week!

Mon-Tue: Noon to 8:00 pm
 Wed-Sat: Noon to 9:00 pm



381836.1.pdf

The file is missing!

LEVITT AMP

JUNE 6—AUG. 22
 PFIFFNER PIONEER PARK,
 STEVENS POINT

It seems like it wasn't that long ago that the Levitt Amp series took shape in Point — but it's now in its eighth season! These shows are worth the drive down to Point for, with a diverse line-up of musicians that bring a high caliber of talent to central Wisconsin. There's a good chance you'll see bands and acts that might be on the grammy stage one day. Returning to Point is Emmitt Smith, a rapper from Point who now lives in LA. The jazzy Alysha Brilla will have you grooving and Lone Pinon will have you longing for the southwest. Plus, check out the great Hmong musicians NewSONG and Michelle Elle, from Minnesota and Wisconsin respectively. Some of these groups have won Grammys, and others are likely on their way to such an award. And the best part — they're free! 6 pm, headlining bands start at 7 pm, and come at 5 pm for yoga. More information and even a Spotify playlist at www.createportagecounty.org/levittamp

382188.1.pdf
 The file is missing!



EMMITT JAMES

Lineup:

- June 6: Alysha Brilla
- June 13: Robert Lea
- June 20: Tedious and Brief
- June 27: Lil' Ed and the Blues Imperials
- July 11: Emmitt James
- July 18: Kommuna Lux
- July 25: Lone Pinon
- Aug. 1: Leon Timbo
- Aug. 8: Bassel and the Supernaturals
- Aug. 15 NewSONG and Michelle Elle
- Aug. 22: Chris Pierce



KOMMUNA LUX

380526.1.pdf

The file is missing!



Jamie Schlei Agency, LLC
Schofield, WI
(715) 359-2400

282150



KLEIN SCUBA

Dive into Adventure!

- Widest Selection of the Best Scuba Equipment Available
- Expert Advice from PADI Certified Professionals
- Exciting Dive Travel All Over the World
- PADI Courses for all skill levels from the best PADI Instructors
- Equipment Servicing and Repairs from our Factory Trained Certified Technicians



2210 N 14th Ave, Wausau
(715) 675-6722
KleinScuba.com



373784

VIBIN IN THE PINES

**AUG. 15-18 | ROSHOLT FAIR-
GROUNDS, ROSHOLT**

When it comes to bluegrass, there's kind of a tradition there that you camp out to watch your favorite bands. And what a perfect spot to do it, at Vibin in the Pines! This music festival has a huge lineup planned this year, not least of which includes Adam Greuel and the Space Burritos, not to mention Bill Bronsted Trio, Soul Symmetry, Hemlock Chaser and more. Plus, camping is only \$5 per night. Weekend passes \$115. vibinpines.com

378180.1.pdf

The file is missing!



WINGS OVER WAUSAU

JUNE 21-22
WAUSAU MUNICIPAL AIRPORT

The Balloon Rally and Rib Fest was one of the biggest events in Wausau and it took place right at the Wausau Municipal Airport. That event was replaced with the Taste N' Glow Balloon Fest in the town of Stettin, so now Wausau Events started a new event: Wings over

Wausau. A professional airshow on both days is buttressed by fireworks at night for the event in the Southeast Side neighborhood. Plus a car show, drone demos, kids activities and much more. \$5 per day. Gates open at 4 pm Friday, and 11 am Saturday. (But with a Run the Runway run at 8 am.) www.wausauevents.org for more details.

CENTERSTAGE
At The Grand!
STAGE, SCREEN & IN-BETWEEN

SEPTEMBER 26th, 27th & 28th
7:00 PM
THE GRAND THEATER
FREE ADMISSION!

Directed by Joel Freiberg
 Choreography by Jeff & Missy Kolbeck

WWW.CENTERSTAGELIVE.ORG

375919

TAQUERIA EL ZEBAS

Freshly handmade Sopes, Gorditas, Huaraches & More!

OPEN 7 DAYS A WEEK:
Mon-Sat 11am-8pm · Sun 11am-6pm
316 Sherman St., Wausau
715-841-0105 ·

375929

RIVERFRONT RENDEZVOUS

JULY 4-6
PIFFNER PIONEER PARK,
STEVENS POINT

There's something about kicking back in a lounge chair just off of downtown Stevens Point, an extra day off ahead because of the Fourth of July weekend, and listening to a lineup of great bands right next to the Wisconsin River. Riverfront Rendezvous is a big deal in Stevens Point, and for good reason — the event combines food vendors, bands ranging from local acts to national ones, lumberjack games, and even poetry readings one year. See the full schedule at <https://stevenspoint.com/409/Riverfront-Rendezvous>

Lineup:

Thursday

Big Oil, Rhythm Playboys, Barefoot Americans, Wheelhouse, Miss Myra and the Moonshiners, Copper Box, and Spin Doctors.

Friday

River Cities Jazz, Boogie and the Yo Yoz,



Non-Serio (Polish Choir), Pat McCurdy, and Horseshoes and Hand Grenades.

Saturday

Improv Comedy; John Dietz and the Twin Lakes Trio; Boo Bradley; Rebel Grace; Adrian & Meredith; Gin, Chocolate, and Bottle Rockets; Reverend Peyton's Big Damn Band.

381344.1.pdf
 The file is missing!

TRI-CITY RESTAURANT

Daily Specials
 With Choice of 2 Home-Cooked Soups

Breakfast Specials
 Monday-Saturday • 6am-11pm
 Starting at \$7.99
 Featuring
 Homemade Potato Pancakes (every day, any time)





Always Fresh Ground Coffee

Friday Fish Fry Served 10am to 9pm Featuring Icelandic Cod

Now Over 20 Choices of Homemade Pies

Visit our website tricityfamilyrestaurant.com
 Online Ordering Available!

☎ 715-359-9596
 📍 525 Grand Ave., Schofield
 Follow us on



HMONG WAUSAU FESTIVAL

JULY 27-28
PEOPLE'S SPORTS COMPLEX, WAUSAU

It started out as a sports festival, and now it's grown to one of the largest celebrations of Hmong culture around. Sports still play a central role here, with flag football, soccer and volleyball taking place on the sports

complex fields, but there are also dance performances, speeches, plenty of food vendors and other kinds of shopping. Plus there is typically a pretty epic fireworks display in the evening. People travel really far to check out this event, and Wausau area residents are lucky enough to have it right in our backyard. Check out hmongwausaufestival.org for ticket information.

HAROLD SCHAUER WITH EUROPEAN EXTRAVAGANZA BRASS BAND

Providing authentic music from our homelands written by historic European composers of the era.

CALL US FOR YOUR SPECIAL FESTIVAL, CELEBRATION OR COMMUNITY EVENT!




Check us out at Willow Springs Gardens June 30, 2024

Call for more information and to check available dates. **715-443-3309**

372812



Pet Friendly Apartments
 Throughout the Greater Wausau Area

Find your home today!
LiveSCS.com



SCS PROPERTY MANAGEMENT
S.C. SWIDERSKI LLC

375303



3266 Campsite Drive
Stevens Point
715-344-8058

www.riversedgewisconsin.com

**Open to the public
Sunday -Friday
Only \$15 per person**

*Reach
Please*



**Outdoor
Axe Throwing
open 7 days
a week**



**Try Our Famous
Broasted Chicken**



**3368 Campsite Drive
Stevens Point
715-344-5990**

www.bullheadsbargrill.com



**LIVE MUSIC
EVERY SATURDAY**



Live Music

- May 25th Madison County
- May 30th Pink Houses
- June 6th Chris Kroeze
- June 8th Spark, Spark, Bang
- June 13th Rising Phoenix
- June 15th Northwoods Skitchers
- June 20th Ember
- June 22nd Bad Downs
- June 27th Knock Point
- June 29th BoomBoxx
- July 4th Spicy Tie
- July 6th Filthy Sinners
- July 11th Totally Neon
- July 13th Sonic Circus
- July 18th Best Practice
- July 20th Shotgun Jane
- July 25th Jerry Schmitt Band
- July 27th Gen X Jukebox
- August 1st Whiskey Ditch
- August 3rd Crankin Yankees
- August 8th Blame it on Waylon
- August 10th Inferred
- August 15th Still Reckless
- August 17th Copperboxx
- August 22nd Jordan Blanchard
- August 24th Stetsin and Lace
- August 29th Glam Band
- August 31st Boogie and the YoYoz



CENTRAL WISCONSIN'S PREMIERE DESTINATION ON ALL THINGS SUMMER

1126 County Road DB, Mosinee, WI, 54455 715-341-2232 www.tikibeachllc.com

380527.1.pdf
The file is missing!

MUST LIST



WISCONSIN VALLEY FAIR

**JULY 30-AUG 4
MARATHON PARK, WAUSAU**

A lot has changed with the Wisconsin Valley Fair. With major musical acts charging higher and higher fees, and lowered attendance, the fair shifted to offering other kinds of sports and entertainment. But it also includes two nights of rodeos, plus the fan-favorite demo derbies. Not to mention all the carnival rides, animal shows and general spectacle that the fair always brings.

All Grandstand events (except the Demolition Derby) are included with your gate admission. The gates will open at 4 pm to allow you to set lawn chairs or blankets. Free seating includes the Grandstand itself, the grass berms, and the area between the reserved seating and the grandstand itself.

Call the fair at 715.261.1539 or email info@wisconsinvalleyfair.com for more information, including about reserve tickets.

Grandstand entertainment schedule:

Tuesday, July 30: Night Ranger

Wednesday, July 31: LoCash

Thursday, Aug. 1: Gabby Barrett

Friday, Aug. 2: PRCA Rodeo

Saturday, Aug. 3: PRCA Rodeo

Sunday, Aug. 4: Demo Derby

INDEPENDENCE DAY CELEBRATION AND CAR SHOW

JUNE 30
WILLOW SPRINGS GARDENS, VILLAGE OF MAINE

OK, so it's not exactly on July 4, but Willow Springs' annual Independence Day Celebration and Car Show is always worth a trip with the fam. Check out the lineup of vintage cars, characters in costume, crafts and food for the kids and adults, a tractor parade at 2 pm, a stick pony rodeo and frankly the well-designed and beautiful grounds to check out.

The old round barn out behind the facilities is worth the trip alone. Stick around in the evening to make sure and check out the fire-works display, a cool way to spend the holiday out in the country. 10 am-10 pm.



377324

Tues – Fri: 9a-6p • Sat: 9a-3p
Closed Sun & Mon
108 S. 2nd Ave. • 715-907-7672
hannah@sugarspicecheesecakes.com

Everything to bake anything!

just for you

beaver.creek
bulk & natural foods
~The Country Store~

Locally made gifts!

GREEN APRON BAKERY CO.
Our Own Bakery
Fridays & Saturdays

Field-fresh Fruit
Order May-Sept.

Family Farm
Clover Meadows
Local organic
yoghurt & milk

Gift Certificates

Beaver Creek Preserves

Many locally-sourced items!
241128 Coriad Rd Athens WI 54411 715-257-7259
M-F: 8:30-5:30
Sat: 8:30-3:00

SOUTH BEACH

Up North
2024

18th Annual Chamber Music Festival

Saturday, July 27
6:00pm
UU Church: Mozart on the Move
featuring a student string quartet

Sunday, July 28
6:00pm
Wausau Conservatory of Music
Mendelssohn and Shostakovich
String Quartets

Thursday, August 1
6:00pm
Woodson Art Museum
(in memory of Rob Hagge)
Beethoven and Beach Piano Trios

Friday, August 2
7:00pm
St. Matthias
Episcopal Church (Minocqua)
Beethoven and Beach Piano Trios

Saturday, August 3
4:00pm
Chestnut Center for the Arts (Marshfield)
Beethoven and Beach Piano Trios

SOUTH BEACH
CHAMBER ENSEMBLE

For more information call Michael Andrews at 305 389-1297
or visit www.sobechamberensemble.org

Support for this project was provided through the Community Arts Grant Program of the Community Foundation of North Central Wisconsin, with funds provided by the Wisconsin Arts Board, a state agency, the Community Foundation, and the B.A. & Ester Greenheck Foundation. Additional support was provided by Cloverbelt Credit Union, Cole Music Fund, Dudley Foundation, Envision Eyecare, Habush Habush and Rottier, Marshfield Area Community Foundation, UMR, Wausau Conservatory of Music, Wisconsin Public Radio, and Woodson Art Museum.

379324

IOLA CAR SHOW

JULY 11-13
IOLA CAR SHOW GROUNDS, IOLA

If you love all things automobile-related, then the Iola Car Show is your jam! This year's theme is called The Meeting of the Muscle - think muscle cars from the 50s and 60s, with guests to boot. Those guests

include Henry Winkler, Donny Most and Anson Williams from Happy Days; John Provost from Lassie; and modern-day guests such as Emily Reeves from Flying Sparks Garage, Von Hot Rod from Pinstriper, and Greg and Leah Stelse from Greg's Speed Shop in Waupaca. iolaoldcarshow.com



382016.1.pdf
The file is missing!

380069.1.pdf
The file is missing!



- Enjoy a cocktail with breakfast, lunch or dinner
- Wausau's hidden gem!

Monday-Friday: 6:30am-8pm
Saturday: 7am-3pm Dine In | Carry Out
Outdoor Dining | Family Friendly
Full Service or Drop Off Catering - 715.846.8805
422 N. Third St. | 715.845.5879 | mintcafewausau.com

SAVE \$1.00 OFF
any Friday special with this ad
between 4pm & 8pm Fridays only.
Cannot be combined with any
other discounts.
Expires 9/7/24

BIG BULL FALLS BLUES FEST

AUG. 16-17

FERN ISLAND, WAUSAU

Did you know that not only is Wausau's Big Bull Falls Blues Fest one heck of a good time, but that it's the longest-running Blues Fest in Wisconsin? Some great blues legends have come through this festival and if you love yourself a good 12-bar blues track, this is your place to be. Kicking things off this year is a Wisconsin legend, Howard Luedtke. With a main stage featuring eight different blues acts over Friday and Saturday, plus a side tent with two more, you will get your money's worth having a drink and watching some blues. \$60 for both days, \$160 VIP. More at wausauevents.org

Friday

5 pm — Howard Luedtke

7 pm — Reverend Raven and the ChainSmoking Altar Boys

9 pm — Lamont Cranston

Saturday

1 pm — Tommy Bentz



HOWARD LUEDTKE

3 pm — Ivy Ford

5 pm — Mark Hummel

7 pm — Robert John and the Wreck

9 pm — The Blood Brothers

381840.1.pdf

The file is missing!



Chet & Emil's

Weekday Specials

Mon. - Tues. - Wed. - Broasted Pork Chops

Thursday - Chicken Family Style

Friday - Fish Frys

Sunday - Chicken Family Style

388 Main St., Birnamwood, WI
Bar 715-449-2226 • Motel 715-449-2297

**Serving Monday Thru Sunday
11-9 Daily**

*Remember Us For Your Parties,
Weddings & Bowling*

262696



SHOPS ON GRAND
EST. 2019

ANTIQUES AND UNIQUES

Antique and Vintage décor, signs, furniture, lighting, tools and more/Farmhouse décor and accessories/Hand-crafted signs, wearables, garden and home décor/Honey & Maple Syrup/Jewelry/Country Chic Paint/ JRV Decoupage Paper/Kitchen essentials/Rustic and Primitive/ Mid Century Modern/Bar signs, mugs and décor and lots and lots more. Over 30 vendors, each unique.

203 E Grand Avenue, Wittenberg

Hours:

Wednesday, Thursday & Friday 9am-5pm

Saturday 9am-3pm

OPEN YEAR ROUND

371819

Kids Calendar

Hey Parents! Here is your must-have guide to all the events/programs around Wausau and Central Wisconsin for kids, teens and families. Also be sure to check Big Guide every week for any updated information.

ONGOING

Greater Wausau Children's Museum, Cedar Creek Mall, Rothschild. Open Tues-Thurs. 9 am-2 pm, Fri. & Sat. 9 am-5 pm, Sun. 12 pm-5 pm. Closed Monday. \$5 per child 1-12 years, free for children under 1 year, \$1 for parents and caregivers. wausauchildrensmuseum.org or 608-408-4668

Story Time for Young Children · Tuesdays, Greater Wausau Children's Museum, Rothschild. Toddlers-age 7 can enjoy stories and other activities. Starts at 10 am. wausauchildrensmuseum.org or 608-408-4668

Wednesday Learning Centers · Every Weds., hosted by the Stevens Point Area YMCA and Boys & Girls Club of Portage County. Available for students in K thru 6th grade. Young learners will get the chance to socialize and learn after school. Centers are open all day. \$10 per child. More info at bgclubpc.org

Mini Monets · Wednesdays, Greater Wausau Children's Museum, Rothschild. Preschool art program for children ages 2-5. Starts at 10 am. wausauchildrensmuseum.org or 608-408-4668

Family Storytime · Wednesdays, hosted online by T.B. Scott Free Library. Listen to stories, songs, and rhymes every Wednesday. Starts at 10 am. On Facebook Live

Kids Workshop · First Saturday of each month, Home Depot, 2705 Sherman St, Wausau. Starts at 9 am. Free. homedepot.com

Babes in the Gardens · Tuesdays, Wausau Botanic Gardens, Wausau. Children ages 2 & under can enjoy a short story time or nature activity. Starts at 8:30 am. \$3 per child, free for members. Cash only. wausaubotanicgardens.org

Tots in the Gardens · Tuesdays, Wausau Botanic Gardens, Wausau. Each week, children ages 3-5 can learn about nature with an activity, crafts and story. Every month has a new theme. Starts at 10 am. \$7 per child, free for members. Cash only. wausaubotanicgardens.org



STORYTIME IN THE GARDEN

JUNE

Vintage Game Night · Fri. 6/7, hosted by the Marathon County Historical Society at the Woodson History Center, 410 McIndoe St, Wausau. Learn about and play vintage games. Starts at 5:30 pm. Free. marathoncountyhistory.org

My Dolly & Me · Sat. 6/8, Yawkey House Museum, 403 McIndoe St, Wausau. Bring a doll or stuffed friend and enjoy refreshments, games and a craft. Suitable for ages 4-13 with adult chaperone. Starts at 1 pm. \$5/person. 715-842-5750 or marathoncountyhistory.org

Blippi: The Wonderful World Tour · Tues. 6/11, Grand Theater, Wausau. Dance, sing & learn with Blippi & special guest Meekah as they discover what makes different cities unique & special. Starts at 6 pm. \$37.50-\$77.50. www.grandtheater.org

Wild Wednesdays-International Crane Foundation · Wed. 6/12, Wildwood Station, 1800 S Roddis Ave, Marshfield. Learn about crane adaptations with the use of crane trunks, crane leg, crane chick plushie, crane

egg, crane feather and crane skull. Starts at 11 am and 1 pm. Free. <https://www.ci.marshfield.wi.us>

Storytime in the Garden · Thurs. 6/13, Yawkey House, 403 McIndoe St, Wausau. Enjoy a couple of story books and children's crafts. Starts at 11 am. Free. 715-842-5750

Wild Wednesdays-All about Pollinators · Wed. 6/19 Wildwood Station, 1800 S Roddis Ave, Marshfield. Learn about pollinators. Starts at 11 am and 1 pm. Free. <https://www.ci.marshfield.wi.us>

Wild Wednesdays-North Lakeland Discovery Center · Wed. 6/26 Wildwood Station, 1800 S Roddis Ave, Marshfield. Learn about nocturnal animals that fly and crawl. Starts at 11 am and 1 pm. Free. <https://www.ci.marshfield.wi.us>

Kids from Wisconsin · Sat. 6/29, Grand Theater, Wausau. Broadway, rock, pop & more performed by Wisconsin's most accomplished youth aged 15-20. Starts at 7 pm. \$15. grandtheater.org

JULY

Vintage Game Night · Fri. 7/5, hosted by the Marathon County Historical Society at the Woodson History Center, 410 McIndoe St, Wausau. Learn about and play vintage games. Starts at 5:30 pm. Free. marathoncountyhistory.org

Winnie the Pooh Tea Party · Sun. 7/7, Willow Springs Garden, Wausau. Enjoy lunch & craft-making. Dress up as your favorite Winnie the Pooh character or bring along your stuffed Pooh friends. Starts at 11:30 am. \$15/person, \$5 children 11 & under. willowspringsgardens.com

Wild Wednesdays-The Mammoth Hunter · Wed. 7/10, Wildwood Station, 1800 S Roddis Ave, Marshfield. Learn about mammoth hunting during the Ice Age. Starts at 11 am and 1 pm. Free. <https://www.ci.marshfield.wi.us>

Storytime in the Garden · Thurs. 7/11, Yawkey House, 403 McIndoe St, Wausau. Enjoy a couple of story books and children's crafts. Starts at 11 am. Free. 715-842-5750

Wild Wednesdays-Wildlife in Need Center · Wed. 7/17, Wildwood Station, 1800 S Roddis Ave, Marshfield. Meet animal ambassadors and learn about wildlife rehabilitation. Starts at 11 am and 1 pm. Free. <https://www.ci.marshfield.wi.us>

Wild Wednesdays-David Stokes · Wed. 7/24, Wildwood Station, 1800 S Roddis Ave, Marshfield. Learn about animals through the use of songs, stories, movement, riddles, audio/visuals and hands-on materials. Starts at 11 am and 1 pm. Free. <https://www.ci.marshfield.wi.us>

Wild Wednesdays-Raptor Education Group, Inc. · Wed. 7/31, Wildwood Station, 1800 S Roddis Ave, Marshfield. Meet raptors and learn about birds of prey and conservation. Starts at 11 am and 1 pm. Free. <https://www.ci.marshfield.wi.us>

AUGUST

Wild Wednesdays-Marshfield PD K-9 Program · Wed. 8/7, Wildwood Station, 1800 S Roddis Ave, Marshfield. Meet Marshfield's police dogs and learn how they keep the city safe. Starts at 11 am and 1 pm. Free. <https://www.ci.marshfield.wi.us>

Storytime in the Garden · Thurs. 8/8, Yawkey House, 403 McIndoe St, Wausau. Enjoy a couple of story books and children's crafts. Starts at 11 am. Free. 715-842-5750

Wild Wednesdays-ZooZort · Wed. 8/14, Wildwood Station, 1800 S Roddis Ave, Marshfield. Meet exotic species not found in Wisconsin. Starts at 11 am and 1 pm. Free. <https://www.ci.marshfield.wi.us>



Wild Wednesdays-Animal Quest · Wed. 8/21, Wildwood Station, 1800 S Roddis Ave, Marshfield. Animal Quest offers a variety of animal-related services through live animals, knowledge, enthusiasm & laughter. Starts at 11 am and 1 pm. Free. <https://www.ci.marshfield.wi.us>

SEPTEMBER

Storytime in the Garden · Thurs. 9/12, Yawkey House, 403 McIndoe St, Wausau. Enjoy a couple of story books and children's crafts. Starts at 11 am. Free. 715-842-5750

Kocourek Kids Run · Sat. 9/28, hosted by IronBull at Rib Mountain State Park Speedway, Wausau. Kids can run laps on the State Park Speedway race track. Starts at 12:15 pm. Free. ironbull.org

CAMPS

Summer Camp in the Gardens · Mon.-Fri. 6/3-8/16, Wausau Botanic Gardens, Wausau. 10 week camp for ages 5-6, 7-8, 8-11 & Naturalists-in-Training ages 12-16. No camp on the week of 7/4. Starts at 8:30 am. \$212/child per week full days, \$136/child half days. wausaubotanicgardens.org

Camp Sturtevant · Mon.-Fri. 6/3-8/23, 2701 Northwestern Ave, Wausau. Camp hours 6:30 am-6 pm. woodsonymca.com

Day Camp · Ages 5-6 \$205 members, \$235 nonmembers; ages 7-9 \$202 members, \$232 nonmembers; ages 10-12 \$202 members, \$232 nonmembers. 6/3-6/7 · S'more Summer Time 6/10-6/14 · Dino-Mite 6/17-6/21 · Sky's the Limit 6/24-6/28 · Color Craze 7/1-7/3 · Stars & Stripes 7/8-7/12 · Wild, Wild, West · 7/15-7/19 · Shipwrecked 7/22-7/26 · Y-Limpics 7/29-8/2 · Splashtacular 8/5-8/9 · Community Hero's 8/12-8/16 · Where the Y-LD Things Are 8/19-8/23 · Best of the Best

Afternoon Camp · Mon.-Fri. 6/3-8/23, for ages 5-12. \$154/week members, \$184/week nonmembers

Explorer's Camp · Mon.-Fri. 6/10-8/16, for ages 10-14. \$295/week members (One Late-Night), \$325/week nonmembers (One Late-Night); \$320 members overnight, \$350 nonmembers overnight

Leadership Camp · Mon.-Fri. 7/8-7/12 & Mon.-Thurs. 7/29-8/2, for ages 11-15. \$395 members, \$425 nonmembers Zip Line; \$355 members, \$385 nonmembers Bay Beach

YMCA Camp Glacier Hollow · Mon.-Fri. 6/5-8/30, YMCA Camp Glacier Hollow, Amherst Junction. No camp on 7/4-7/5. Camp hours Mon.-Fri. 7 am-5:30 pm. glacierhollow.com

Camp Glacier Hollow Day Camp · for ages 7-12. \$190/week members, \$230/week nonmembers. \$138/members, \$170 for nonmembers for 6/5-6/7. 6/5-6/7 · Summer Kickstart 6/10-6/14 · Bug's Life 6/17-6/21 · Deserted Island 6/24-6/28 · Uniquely You 7/1-7/3 · Out of This World 7/8-7/12 · Eco Adventure · 7/15-7/19 · Wacky Waters 7/22-7/26 · Wild, Wild West 7/29-8/2 · Mysteries of Glacier Hollow 8/5-8/9 · Glacier Hollow Olympics 8/12-8/16 · Y'ld Things 8/19-8/23 · Sports Mania 8/26-8/30 · Messtival

Strings Orchestra Camp · Mon.-Fri. 6/10-6/14, Wausau Conservatory of Music, Wausau. Students in grades 6-12 can learn and improve playing a stringed instrument. Starts at 12:30 pm. \$180 per student. Register at wausauconservatory.org

Musical Theatre VOICE Camp · Mon.-Fri. 7/15-7/19, Wausau Conservatory of Music, Wausau. Musical acting lessons for students in grades 9-12. Starts at 9 am. \$175. Register at wausauconservatory.org

Musical Theatre VOCAL Camp for Tweens · Mon.-Fri. 7/22-7/26, Wausau Conservatory of Music, Wausau. Musical acting lessons for students entering grades 5-8. Starts at 9 am. \$175. Register at wausauconservatory.org

Kids VOICE Theatre Camp · Mon.-Fri. 7/29-8/2, Wausau Conservatory of Music, Wausau. Musical acting lessons for students ages 7-9. Starts at 9 am. \$160. Register at wausauconservatory.org

WAUSAU *River* DISTRICT

SHOPS · EATS · ENTERTAINMENT

It's all downtown!

380531.1.pdf

The file is missing!



**DOWNTOWN
OPTICAL**
See Great...Look Great

330 Washington Street
715-298-3308
downtownopticalllc.com

28342

382084.1.pdf

The file is missing!



**DIME & DOLLAR
THRIFT
STORE
WAUSAU**

211 Alexander Street, Wausau
715-849-4168 

371439

382049.1.pdf

The file is missing!

Explore the District.

The Wausau River District promotes and facilitates economic vitality and historic preservation in downtown Wausau for the benefit of the entire community.

Live and work downtown

Looking for a new place? Wondering how you can start your dream job in downtown Wausau? We can help! The Wausau River District is a great place to live and work, with easy access to shopping, restaurants, office space, parks and walking trails, and so much more.

VISIT THE WAUSAU RIVER DISTRICT WEBSITE FOR MORE INFORMATION
WWW.WAUSAURIVERDISTRICT.ORG

380820.1.pdf
The file is missing!



evolutions
in design

Flowers - Gifts - Home Decor
www.evolutionsindesign.com



319 GALLERY
Fine Art – TALENT SHOP
“Lost Arts” – Local Artist & Crafters

319 4th Street, Wausau, WI 54403
715-870-2261
11am-3pm Mon-Sat  The 319 Gallery, Inc.

380928.1.pdf
The file is missing!

382027.1.pdf
The file is missing!



MIDWEST
THE LOCAL
GOODS

APPAREL. HOME. GIFTS + MORE
Tuesday thru Saturday • 10am to 5pm
420 N 3rd St, Wausau
3806 Schofield Ave Suite 2, Weston



• Tacos • Fajitas
• Jumbo Burritos

Dine-in or Takeout

OPEN 7 DAYS A WEEK
10a-8p

210 S. 1st Ave., Wausau
715-393-4402




• Ice Cream
• Chocolates
• Espresso
• Kombucha On-Tap



M, T, Th, Fri: 9:30a-7p • Wed: 9:30a-8p • Sat: 9:30a-5p • Sun 11a-5p
615 N 3rd St, Wausau, WI | (715) 870-2109
SweetsOn3rd.com | Facebook.com/SweetsOn3rd



Where good food and good friends come together!

Join Us!
715.574.8179 
319 4th St. Downtown Wausau

MARCH MERILLY
INTO MERRILL

The Merrill Museum

Better than a night out

100 E. Third St. Merrill, WI • 715-536-5652

Open Monday thru Friday 9 to 1
or by appointment



LOCAL - 2023 BUSINESS OF THE YEAR

Meat Service

**SERVING THE
COMMUNITY FOR
OVER 67 YEARS!**

*"TAKING PRIDE
IN PROCESSING
QUALITY MEAT"*

715-536-5283

W4490 Pope Rd., Merrill WI • www.gelssmeat.com

**CUSTOM & WILD GAME PROCESSING
FULL RETAIL STORE | GIFT BOXES**

37700

380518.1.pdf

The file is missing!

Charbroiled, Pure Beef Burgers...



Celebrating over 50 years serving Merrill!



HAMBURGERS

• Ice Cream • Drive Thru Only

1203 E. 3rd Street • 715-536-6532

www.chipshamburgersmerrill.com

375837

Boogie on over to Birnamwood



380532.1.pdf

The file is missing!

382007.1.pdf

The file is missing!

Concrete Statuary
Concrete Benches
Concrete Planters
Metal Yard Spinners
Metal Flowers
Wind Chimes
Stainless Steel Spinners
Decorative Marble Pavers
Wind Balloons

Summer Hours
M/W/Th/F/Sat 9-4
Sun 10-3
Closed Tuesdays



457 Hwy 45, Birnamwood, WI 54414
715.449.2894
pouredcreationsllc@gmail.com

377237

380521.1.pdf
The file is missing!

Wander your way to Wittenberg



Call Ahead for Tee Times! 715-253-2448

N66321 Cardinal Lane, Wittenberg, WI 54499



Stop in and see our pharmacists
- Tim, Shane and Katie

**203 E. Westgor Ave.,
Wittenberg**

715-253-2164

317219

381561.1.pdf
The file is missing!

378201.1.pdf
The file is missing!

Mosey on over to

Mosinee

380537.1.pdf

The file is missing!

WEEKLY SPECIALS

- Monday Baked Chicken
- Tuesday Tacos
- Wednesday Wings
- Thursday BBQ Ribs
- Friday Fishfry
- Saturday Steak Night



Open Mon-Sat at 11am
Dine-in, Pick-up & Delivery

SALTY BONES
145727 State Hwy 153
Mosinee WI 54455
715-814-1655



376397

MOSINEE AREA CHAMBER OF
COMMERCE'S ANNUAL



4TH OF JULY FESTIVAL

Thursday, July 4th
River Park, Mosinee

FIRECRACKER 5K

Registration at 8 AM, Event starts at 9 AM

HORSESHOE TOURNAMENT & KIDS FISHING TOURNAMENT

Pre-registration 11 AM, Tournament starts at Noon

FESTIVAL

Food Trucks, Beer Tent, Craft Vendors,
Children's Activities, and Bands starting at 3 PM
Parade at 6 PM, Fireworks at Dusk

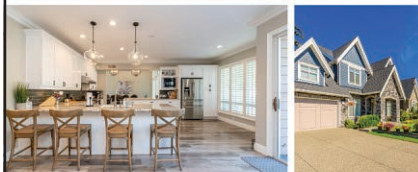
[HTTPS://MOSINEECHAMBER.ORG/OUR-
EVENTS/4TH-OF-JULY-FESTIVAL-2024](https://mosineechamber.org/our-events/4th-of-july-festival-2024)

377542

SCS

REAL ESTATE
LAND | RESIDENTIAL | COMMERCIAL

SCS Real Estate is a full-service
Real Estate Brokerage. Whether you
are **Buying, Selling** or **Investing**
- we have you covered!



Find Your Agent Today!
scsrealestate.com
715-846-2000

Available in Downtown Mosinee!

377541

381939.1.pdf

The file is miss-
ing!

SUMMER FUN CALENDAR

ONGOING

Central Wisconsin Water Ski Shows

· Tuesdays and Thursdays 6/4-8/29, enjoy water ski performance, popcorn and other concessions. Bring a chair or blanket. Free but donations appreciated. Shows on Tuesdays located at Bluegill Bay Park, Lake Wausau & shows on Thursdays located at South Bay Beach, Lake Dubai. Starts at 6:30 pm. cwwaterwalkers.com

Farmers Market of Wausau

· Saturdays & Wednesdays from May-mid Nov., 200 River Dr, Wausau. Starts at 7 am. farmersmarketofwausau.com

Aspirus Wausau Farmers Market

· Every Thursday, Located at Aspirus Corporate Parking Lot, 2200 Westwood Dr, Wausau. Opens 9 am. Aspirus.org

Mobile Wi-Fi Hotspots available at MCPL

· now until 6/30, all Marathon County Public Library locations. Mobile Wi-Fi hot spots are available for checkout at each MCPL locations. Hot spots can be checked out for a period of two weeks. Patrons must be 18 years or older, have an MCPL card and no reliable internet at home. mcpl.us for more info

Edgar Community Cookbook

· now until 9/1, Marathon County Public Library, Edgar. Drop off your recipe at MCPL Edgar or email MCPL.Edgar@co.marathon.wi.us. Recipes may be original or created by others; please include a brief description of each recipe's origin. After enough recipes have been received, a cookbook will be compiled & added to the library's



collection for the community to enjoy. Free event & open to Edgar area community members. 715-352-3155 for more info

Kronenwetter Farmers Market

· Sundays from 6/9-10/20, Buska Park, Kronenwetter. Starts at 9 am. kronenwetter.org

MAY

PLUSH w/special guests The Almas &

Through Crimson · Thurs. 5/23, The Q & Z Expo Center, Ringle. Rock. Doors open at 6 pm. Show starts at 7 pm. \$15 advance, \$20 at the door. qzexpoctr.com

Spring Wildflower Hikes · Sat. 5/25, hosted by the Friends of Rib Mountain at Rib Mountain State Park, Wausau. Go for a hike and observe wildflowers. Bring water & tick repellent. Starts at 10 am. Free. ribmountain.org

2024 Rib Mountain Adventure Challenge · Sat. 5/25, hosted by IronBull, starting area TBD within 60 miles of Wausau. Run, bike or paddle through the wildness of Central Wisconsin. Choose from a 3-hour, 8-hour or 18-hour challenge. Starts at 10:30 am for the 3-hour ride, 6 am for the 8-hour ride & 7:30 pm for the 18-hour ride. \$140-\$225. ribmountainadventurechallenge.com

Meaghan Owens · Sat. 5/25, Stoney Acres, Athens. Americana, country, folk, variety. Starts at 5 pm. 715-432-6285

Madison County · Sat. 5/25, Tiki Beach Bar & Grill, Mosinee. Country. Starts at 6:30 pm. 715-341-2232

On Point Music Fest · Sun. 5/26, Mathias Mitchell Public Square, Stevens Point. Enjoy 9 hours of live music performed by Sonic Circus, Boogie Train, Scorched Waves & Soul Whiskey. Starts at noon. Free. downtownpointwi.com

Scaled Up Reptile Expo · Sun. 5/26, hosted by Scaled Up Expo at Central Wisconsin Convention and Expo Center, 10101 Market St, Rothschild. Look at the reptiles from different breeders, stock up on supplies and possibly take a reptile home. Starts at 10 am for VIP, 11 am for general admission. \$12 VIP admission, \$6 general admission, free for ages 5 and under. scaledupexpos.com

Wausau Woodchucks Game · Mon. 5/27, Athletic Park, Wausau. Woodchucks vs. Green Bay Rockers. Starts at 1:05 pm. northwoodsleague.com/wausau-woodchucks/

Pizza on the Patio · Wed. 5/29, Willow Springs Garden, Wausau. Enjoy all you can eat homemade pizza, salad, bread, a featured dish, dessert, lemonade, milk, water and live music. Starts at 6 pm. \$16/person, \$5/person ages 6-10, free for ages 5 and under. willowspringsgardens.com

Wausau Woodchucks Game · Wed. 5/29, Athletic Park, Wausau. Woodchucks vs. Fond du Lac Dock Spiders. Starts at 6:05 pm. northwoodsleague.com/wausau-woodchucks/

Pink Houses · Thurs. 5/30, Tiki Beach Bar & Grill, Mosinee. Classic rock. Starts at 6:30 pm. 715-341-2232

Hoop Tea.
Spiked Iced Tea

Original
5% ABV.

Real Tea.
Zero Carbonation.
100% Refreshing

375975

THE PICKLE JAR
GRINDS & FINDS

2023 Neighborhood **FAVE** nextdoor

4308 N 6th St
WAUSAU, WI
715-298-2406

OPEN
TUE - SUN

371835

COME AS
STRANGERS
LEAVE AS
FRIENDS!

- Pizzas, egg rolls, & jumbo pretzels
- Large variety of beverages (something for everybody)
- Year-round events
- Friendly staff & great atmosphere



ARROW TAP BAR
»»—SHEENA, LEE, & JOE—««

Open Daily 10am-Close
318 Main St, Marathon City, WI 54448
(715) 443-3233

312272

FOLLOW US ON FACEBOOK TO SEE WHAT'S HAPPENING!

Marathon
Flooring LLC

Carpet
Vinyl Plank
Residential/
Commercial

**Call or text for
FREE CONSULTATION**

715-581-0553

207 Pine St.
Marathon, WI 54448
marathon-flooring.com

Meander into Marathon



382663.2.pdf
The file is missing!



SUMMER FUN CALENDAR

Dairyfest 2024 · Fri-Sat. 5/31-6/1, hosted by the Marshfield Area Chamber of Commerce & Industry at Columbia Park, Upham Mansion, Nutz Deep II, Wenzel Family Plaza, Central Ave & Marshfield Fairground, Marshfield. Fri. events include breakfast at Marshfield Fairground at 5:30 am, food trucks starts at 11 am, picnic in the park at Columbia Park at 5 pm, inflatable fun, educational events, music and more. Sat. events include the Dairyfest Parade (downtown Central Ave) at 11 am, Upham Mansion pie social at 10 am, Center City Fun Day (Wenzel Family Plaza) at 10 am, inflatables, petting zoo, dairy samples, beer and music at Nutz Deep II and more. More info at marshfieldchamber.com



Meander into Marathon

The Copper Mug LLC
 207 Pine Street • Marathon, WI 54448

Brenda Kaiser-Sorenson
 715-581-1678
 thecoppermugllc@gmail.com
 thecoppermugllc.com

Check [f](#) for pop-up dates and hours

- Workshops
- Wine & Bourbon Tastings
- Local Products from Over 35 Wisconsin Vendors
- Checkout Our Home Decor Boutique

2024 Craft Markets
 5/11 • 9/14 • 11/2

368273

307 MAIN STREET - MARATHON CITY

coffee
 market
 good vibes

368284

372553.1.pdf

The file is missing!



16 Years
OF SERVING
AUTHENTIC QUALITY
MEXICAN CUISINE



"Fresh Authentic Mexican Cuisine"



CHECK OUT OUR NEW
TACO BUFFET

Monday-Thursday 10am-2pm



MEXICAN BREAKFAST

Friday 9am-10pm
Saturday 8am-10pm



WE OFFER
OVER 100
DIFFERENT FLAVORS
OF TEQUILA!



BEST
**HAND-
CRAFTED**
MARGARITAS!

TOP RATED
MEXICAN &
SOUTHWEST
CUISINE

8 years in a row
by Trip Advisor

Nominated 2023
**SMALL BUSINESS
OF THE YEAR**
by Greater Wausau
Chamber of
Commerce

Monday-Thursday 10am-10pm • Friday 9am-10pm • Saturday 9am-10pm

KITCHEN CLOSSES AT 10PM. BAR IS OPEN LATER.

📍 151522 County Rd NN • Wausau 📞 715-298-3277 🌐 www.eltequilasalsa.com

\$5 Off Your \$30 Order

one coupon per table

Not valid with any other offer
Offer Expires On 1/31/25

15% Off Any Takeout Order

one coupon per person

Not valid with any other offer
Offer Expires On 1/31/25

SUMMER FUN CALENDAR

Scott Kirby · Fri. 5/31, Stoney Acres, Athens. Americana. Starts at 5 pm. 715-432-6285

Jenny Don't & The Spurs w/Pit Stop · Fri. 5/31, Lamplight Sessions, 224 Main St, Mosinee. Garage-rock, western, punk-country. Doors open at 6 pm. Show starts at 7 pm. \$38. lamplightsessions.com

Hub City Concert Series: Flying Ostrich & Black Hole Sons · Fri. 5/31, Wenzel Family Plaza, Marshfield. Blues/rock, 90's alternative rock. Starts at 7 pm. visitmarshfield.com

Anything Goes · Fri.-Sun. 5/31-6/2 & Thurs.-Sun. 6/6-6/9, hosted by the Wisconsin Community Theatre at the UW Center for Civic Engagement, Wausau. Classic musical set board the ocean liner S.S. American in the 1930s. Starts at 7:30 pm on 5/31 & 6/1, 2 pm on 6/2, 6:30 pm at 6/6, 7:30 pm on 6/7, 2 pm & 7:30 pm on 6/8, and 2 pm on 6/9. \$25 adults, \$21 senior citizens, active

military & college students, \$17 youth. wausaucommunitytheatre.org

Project Pink: North American's Premier Pink Floyd Tribute · Fri. 5/31, Grand Theater, Wausau. Pink Floyd tribute band that faithfully recreates the Floyd experience using a 20 foot projection screen, many lights & world-class sound production. Starts at 7:30 pm. \$30-\$50. grandtheater.org

JUNE

Essential Gravel Bike Ride · Sat.-Sun. 6/1-6/16, hosted by IronBull at 172900 State Hwy 29, Ringle. Go for a 10, 20 or 44 mile bike ride. Complete the route any time you want. Free. ironbull.org

Birding Hikes · Sat. 6/1, hosted by the Wausau Bird Club and the Friends of Rib Mountain at Rib Mountain State Park, Wausau. Go for a hike and observe birds in the state park. Bring binoculars if possible. Starts at 7 am. Free. ribmountain.org or 715-680-9480



370375.1.pdf
The file is missing!

KEEPING IT REAL Genuine Banking for Real Life



“ I’m a big fan of the one-on-one business you do... You treat me like a friend and always look out for my best interest. ”



Banking | Lending | Guidance
prevail.bank / 800.205.0914



SUMMER FUN CALENDAR

Run for their Lives 5k · Sat. 6/1, Immanuel Baptist Church, Wausau or virtually. Go for a 5k run/walk to support the Marathon County Humane Society. Starts at 8:30 am. \$25. runsignup.com/Race/WI/Wausau/HSMCRunforTheirLives5k

Wausau Woodchucks Game · Sat. 6/1, Athletic Park, Wausau. Woodchucks vs. Wisconsin Rapids Rafters. Starts at 6:05 pm. northwoodsleague.com/wausau-woodchucks/

Voices of Classic Rock · Sat. 6/1, Lake of the Torches Resort Casino, Lac du Flambeau. Rock concert performed by the former lead singers of Boston, Asia & Journey. 18+. Starts at 7 pm. \$30-\$40. lakeofthetorches.com

Wisconsin Valley Golf Association Tournament · Sun. 6/2, Merrill Golf Club, Merrill. Individual stroke golf tournament open to those who enjoy golf. Starts at 8 am. \$55. wivalleygolf.org

Wausau Woodchucks Game · Mon. 6/3, Athletic Park, Wausau. Woodchucks vs. Fond du Lac Dock Spiders. Starts at 6:05 pm. northwoodsleague.com/wausau-woodchucks/

2024 WBA Spring Parade of Homes · Tues.-Sun. 6/4-6/9, hosted by Wausau Area Builders Association. Tour 15 different homes. Starts at 5 pm. Wausauareabuilders.com

Sam Ness · Tues. 6/4, Hodag Park, 509 Hodag Park Dr, Rhinelander. Americana. Starts at 6:30 pm. 715-362-1975

Concert on the Square: Slab · Wed. 6/5, 400 Block, Wausau. Pop, rock & dance. Starts at 6 pm. wausauevents.org

Wausau Woodchucks Game · Wed. 6/5, Athletic Park, Wausau. Woodchucks vs. Fond du Lac Dock Spiders. Starts at 6:35 pm. northwoodsleague.com/wausau-woodchucks/

Power of the Purse · Thurs. 6/6, hosted by United Way of Marathon County at Jefferson Street Inn, Wausau. Auction & social for women with a variety of handbags, accessories, gifts along with hors-d'oeuvres & cash bar and raffles. Donations help local programs. Starts at 5 pm. \$60-\$80 registration. unitedwaymc.org

Levitt Amp Concert Series: Alysha Brilla · Thurs. 6/6, Pfiffner Park Bandshell, Stevens Point. Variety. Starts at 6 pm. createportagecounty.org



46th
Shawano Folk Music Festival
Music Under the Trees
August 9 – 11, 2024
Mielke Arts Center & Mielke Park in Shawano

- John Stano ● Emma's Revolution ●
- Gaines and Wagoner ● Mark Dvorak ●
- Ken Lonquist and the O'Darby Irish Pub Band ●
- Lil' Rev ● Heather Styka ● South for Winter ●
- and more ●

shawanofestival.org



382151.1.pdf
The file is missing!

TASTENGLOW

BALLOON FEST

JULY 12TH-13TH
140914 STETTIN DR

KIDS ACTIVITIES, CRAFT SHOW,
CAR SHOW, LUMBERJACK AND
LOG ROLLING SHOW

*See you
There!*

DONT MISS THE
**DRONE
SHOW**



For more information go to
tastenglowfest.com

37721

SUMMER FUN CALENDAR

Bluegrass at the Lake · Thurs.-Sat. 6/6-6/8, South Wood County Park, Lake Wazeecha Red Sand Beach, Wisconsin Rapids. Annual bluegrass festival that benefits the South Wood County Humane Society and the Wisconsin Rapids Lions Club. Lineup: Thurs., Southbound. Fri. lineup: The Baker Family, Art Stevenson & High Water and Noah John & Ringing Iron. Sat. lineup: Piper Road Spring Band, The Silas Powell Band, Sawdust Symphony, Art Stevenson & High Water and Noah John & Ringing Iron. Starts at 6:30 pm on Thurs., 6 pm on Fri., & 2 pm on Sat. \$5 Thurs. \$5, Fri. \$25 at the gate, Sat. \$30 at the gate. bluegrassatthelake.com

Chris Kroeze · Thurs. 6/6, Tiki Beach Bar & Grill, Mosinee. Country. Starts at 7 pm. 715-341-2232

Noah James Hittner · Fri. 6/7, Stoney Acres, Athens. Folk-rock. Starts at 5 pm. 715-432-6285

Hub City Concert Series: The Belle Weather · Fri. 6/7, Wenzel Family Plaza, Marshfield. Indie folk rock. Starts at 7 pm. visitmarshfield.com

Triebold Family Opera · Sat. 6/8, Stoney Acres, Athens. Opera. Starts at 5 pm. 715-432-6285

Spark Spark Bang · Sat. 6/8, Tiki Beach Bar & Grill, Mosinee. Country rock. Starts at 6 pm. 715-341-2232

Wisconsin Valley Golf Association Tournament · Sun. 6/9, Glacier Wood Golf Club, Iola. Individual stroke golf tournament open to those who enjoy golf. Starts at 8:30 am. \$55. wivalleygolf.org

Wausau Woodchucks Game · Mon. 6/10, Athletic Park, Wausau. Woodchucks vs. Madison Mallards. Starts at 6:05 pm. northwoodsleague.com/wausau-woodchucks/

Main Street Music: Doug Kroening · Tues. 6/11, hosted by Marathon City 2020 Ltd at Marathon City Heritage Center Park, Marathon City. Rock & blues. Starts at 6 pm. facebook.com/marathoncity2020

Wausau Woodchucks Game · Tues. 6/11, Athletic Park, Wausau. Woodchucks vs. Eau Claire Express. Starts at 6:35 pm. northwoodsleague.com/wausau-woodchucks/

Concert on the Square: The Hucksters · Wed. 6/12, 400 Block, Wausau. Classic rock & originals. Starts at 6 pm. wausauevents.org

Pizza on the Patio · Wed. 6/12, Willow Springs Garden, Wausau. Enjoy all you can eat homemade pizza, salad, bread, a featured dish, dessert, lemonade, milk, water and live music. Starts at 6 pm. \$16/person, \$5/person ages 6-10, free for ages 5 and under. willowspringsgardens.com

Wausau Woodchucks

MAY - JUNE

SUN	MON	TUE	WED	THU	FRI	SAT
	27 GB 1:05	28 GB 6:35	29 FDL 6:05	30 FDL 11:35	31 WIR 6:35	1 WIR 6:05
2 FDL 1:05	3 FDL 6:05	4 OFF	5 FDL 6:35	6 FDL 6:35	7 LAK 6:35	8 LAK 6:35
9 MAD 4:05	10 MAD 6:05	11 EC 6:35	12 EC 6:35	13 DUL 6:35	14 DUL 6:35	15 TB 6:35
16 TB 1:35	17 OFF	18 LAK 6:35	19 LAK 6:35	20 WIR 12:05 6:35	21 FDL 6:35	22 FDL 6:35
23 GB 1:05	24 GB 6:05	25 LAK 6:35	26 LAK 6:35	27 EC 6:35	28 EC 6:35	29 DUL 6:05
30 DUL 1:05						

JULY

SUN	MON	TUE	WED	THU	FRI	SAT
	1 MAD 6:05	2 MAD 6:35	3 GB 6:35	4 GB 1:05	5 FDL 6:35	6 FDL 6:05
7 WIR 1:05	8 WIR 6:35	9 OFF	10 OFF	11 WIR 12:05 6:35	12 FDL 6:35	13 FDL 6:35
14 GB 1:05	15 GB 6:05	16 MAD 12:05	17 MAD 6:35	18 WIR 6:35	19 WIR 6:35	20 LAK 6:05
21 LAK 1:05	22 ASG BREAK	23 ASG BREAK	24 ASG BREAK	25 GB 6:35	26 GB 6:35	27 GB 3:05
28 GB 1:05	29 OFF	30 WIR 6:35	31 WIR 6:35			

AUGUST

SUN	MON	TUE	WED	THU	FRI	SAT
				1 TB 6:35	2 TB 6:35	3 MAD 6:05
4 MAD 5:04	5 KEN 6:05	6 KEN 6:35	7 MIN 6:35	8 MIN 6:35	9 KEN 6:35	10 KEN 6:35
11 Sub-Division Championship	12 Sub-Division Championship	13 Sub-Division Championship	14 Division Championship	15 League Championship		

FIREWORK FRIDAYS

6:35 FRIDAY, JUNE 21ST
 6:35 FRIDAY, JUNE 28TH
 6:35 FRIDAY, JULY 5TH
 6:35 FRIDAY, JULY 19TH
 6:35 FRIDAY, AUGUST 2ND
 6:05 SATURDAY, AUGUST 3RD

715.845.5055



HOME AWAY

SCAN FOR
TICKETS AND
MORE INFO



FIREWORKS COUNTRY

Price

Stop At The Big Blue Barn

Quality

For All Yours Fireworks Needs!



Stop In And Register To Win

Our \$1000.00
Fireworks Give Away!
Drawing Will Be July 3rd

2023 Fireworks Giveaway Winner
Chris Rezin from Wisconsin Rapids

Service

Wisconsin's Largest Variety

Jerry, Sally, Tony & Stickman Bamke

W18862 State Hwy 29, Wittenberg, WI 54499
715.253.BARN 2276 | fireworkscountry.net

Open 7 Days Week
from Mothers Day
to Labor Day

SUMMER FUN CALENDAR

Pizza in the Orchard · Thurs. 6/13, Rock Ridge Orchard, Edgar. Enjoy a pizza buffet and music from The Jerry Schmitt Band Duo. Bring a lawn chair. Doors open at 4 pm. Music starts at 6 pm. \$18 adults, \$6 children 11 and under. 715-370-4083

Annual Steak Cookout · Thurs. 6/13, Willow Springs Garden, Wausau. Enjoy live music, steak, drinks, appetizers, mashed potatoes, fresh salad, fruit, cheese, veggies and dessert. Starts at 5:30 pm. \$60/person. www.willowspringsgardens.com

Levitt Amp Concert Series: Roberta Lea · Thurs. 6/13, Pfiﬀner Park Bandshell, Stevens Point. Country, pop, variety. Starts at 6 pm. createportagecounty.org

Rising Phoenix · Thurs. 6/13, Tiki Beach Bar & Grill, Mosinee. Classic rock. Starts at 6 pm. 715-341-2232

Scott Kirby · Fri. 6/14, Stoney Acres, Athens. Americana. Starts at 5 pm. 715-432-6285

Hub City Concert Series: Newski · Fri. 6/14, Wenzel Family Plaza, Marshfield. Alternative/indie rock. Starts at 7 pm. visitmarshfield.com

Rec Release & Intro to Kayaking Lessons · Sat.-Sun. 6/15-6/16, Wausau Whitewater Park, 200 River Dr, Wausau. Paddle or slalom in the waters. Learn how to kayak. ACA membership, helmet, boat floatation, life jacket required. Kayaking intro starts at 9 am. Rec release starts at 10 am. \$20 per day, \$30 per weekend, \$10 ACA fee, \$55 for kayaking lessons. wausauwhitewater.org

**The "Original" - 54th BIG Season:
Shawano Flea Market !
Sundays! Thru Oct. 6**

**Saturday & Sunday Holiday Markets:
May 25 & 26 + July 6 & 7**

Car Show Oct. 6 (Sponsored By Twigs Beverage)

Hours: 7am to 4pm / \$2 · Free Parking

Shawano County Fairgrounds

990 E Green Bay St, Shawano, Wisconsin

715-526-9769 · ZurkoPromotions.com

Antigo Flea Market

Fri. May 24 · Thur. July 4 · Fri. July 5

Labor Day Weekend:

Sat. Aug. 31 & Sun. Sept. 1

Hours: 7am to 4pm / \$2 · ZurkoPromotions.com

Langlade County Fairgrounds

1633 Neva Road, Antigo, WI · 715-526-9769

380955.1.pdf

The file is missing!

Solstice Summer Challenge · Sat. 6/15, hosted by IronBull at 227200 Snowbird Ave, Wausau. Challenge yourself by climbing Rib Mountain, the toughest climb in the Midwest. Starts at 4 pm. \$20-\$60. ironbull.org

Open Tab · Sat. 6/15, Stoney Acres, Athens. Acoustic variety. Starts at 5 pm. 715-432-6285

The Northwoods Skitchers · Sat. 6/15, Tiki Beach Bar & Grill, Mosinee. Classic & alternative rock & blues. Starts at 6 pm. 715-341-2232

Ember · Tues. 6/18, Hodag Park, 509 Hodag Park Dr, Rhinelander. Country. Starts at 6:30 pm. 715-362-1975

Wausau Woodchucks Game · Tues. 6/18, Athletic Park, Wausau. Woodchucks vs. Lakeshore Chinooks. Starts at 6:35 pm. northwoodsleague.com/wausau-woodchucks/

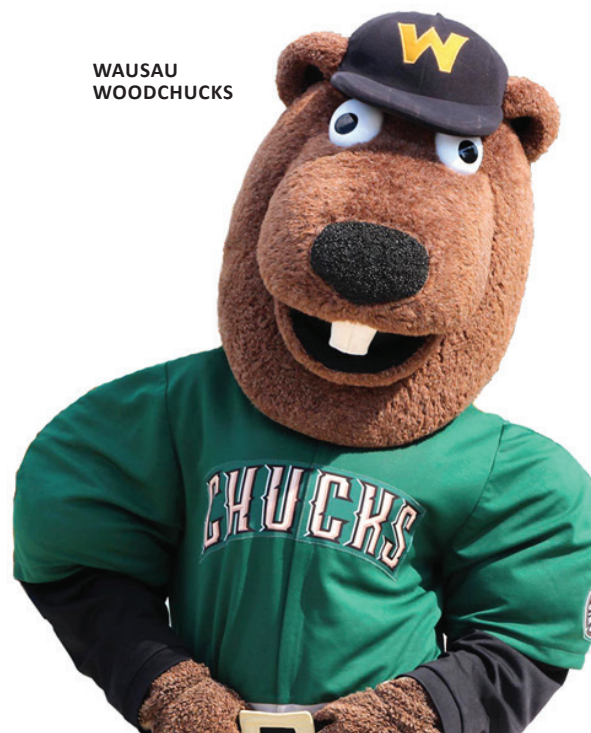
Concert on the Square: Brad Emanuel · Wed. 6/19, 400 Block, Wausau. Country, rock. Starts at 6 pm. wausauevents.org

Wausau Woodchucks Game · Wed. 6/19, Athletic Park, Wausau. Woodchucks vs. Lakeshore Chinooks. Starts at 6:35 pm. northwoodsleague.com/wausau-woodchucks/

Wausau Woodchucks Game · Thurs. 6/20, Athletic Park, Wausau. Woodchucks vs. Wisconsin Rapids Rafters. Starts at 12:05 pm. northwoodsleague.com/wausau-woodchucks/

Pizza in the Orchard · Thurs. 6/20, Rock Ridge Orchard, Edgar. Enjoy a pizza buffet and music from Jason McNabb and The Reign. Bring a lawn chair. Doors open at 4 pm. Music starts at 6 pm. \$18 adults, \$6 children 11 and under. 715-370-4083

**WAUSAU
WOODCHUCKS**



Peoples
STATE BANK

BANK ANYWHERE
anytime

OPEN NOW

SAFELY OPEN A NEW ACCOUNT IN MINUTES

BANKPEOPLES.COM | 888.929.9902 | MEMBER FDIC

kids are making
HISTORY
this summer

at My Dolly & Me: A Garden Party
Bring your doll or stuffed friend to a garden party. Tickets on sale soon! **June 12th**

at Storytime in the Garden
Sit in the lovely Yawkey Garden and enjoy a story. Free for all ages!
**May 9, June 13, July 11,
Aug. 8, and Sept. 12th**

at Kid's History Day
A fun day camp for hands-on history. Reservations required.
Aug 23rd

marathoncountyhistory.org
MARATHON COUNTY HISTORICAL
society

371837

SUMMER FUN CALENDAR

Levitt Amp Concert Series: Tedious & Brief · Thurs. 6/20, Pfiffner Park Bandshell, Stevens Point. Pop. Starts at 6 pm. createportagecounty.org

Ember · Thurs. 6/20, Tiki Beach Bar & Grill, Mosinee. Country. Starts at 6:30 pm. 715-341-2232

Wausau Woodchucks Game · Thurs. 6/20, Athletic Park, Wausau. Woodchucks vs. Wisconsin Rapids Rafters. Starts at 6:35 pm. northwoodsleague.com/wausau-woodchucks/

Wings Over Wausau · Fri.-Sat. 6/21-6/22, Wausau Downtown Airport, Wausau. Watch a professional air show and enjoy several other activities such as drone demonstrations, wing competition, kid's activities, bounce houses, fireworks, live music & more. Starts at 4 pm on Fri. & 11 am on Sat. \$5 admission. wausauevents.org

374312.1.pdf

The file is missing!

Joyann Parker · Fri. 6/21, Stoney Acres, Athens. Variety. Starts at 5 pm. 715-432-6285

Wausau Woodchucks Game · Fri. 6/21, Athletic Park, Wausau. Woodchucks vs. Fond du Lac Dock Spiders. Starts at 6:35 pm. northwoodsleague.com/wausau-woodchucks/

Hub City Concert Series: Tedious & Brief · Fri. 6/21, Wenzel Family Plaza, Marshfield. Alternative/indie pop. Starts at 7 pm. visitmarshfield.com

The 33rd Annual Energy Fair · Sat. 6/22, The Midwest Renewable Association, 7558 Deer Rd, Custer. Outdoor event with keynote speakers, live music, family events, food and beverages, workshops, solar-brewed beer and more. Starts at 9 am. midwestrenew.org

Total Tomahawk Terrain · Sat. 6/22, hosted by IronBull at Sara Park, Tomahawk. Go for a 33, 63 or 103 mile bike ride. Bring a towel. Starts at 9 am. Free. ironbull.org

The Bad Downs · Sat. 6/22, Tiki Beach Bar & Grill, Mosinee. 90's rock & more. Starts at 5 pm. 715-341-2232

Meaghan Owens · Sat. 6/22, Stoney Acres, Athens. Americana, country, folk, variety. Starts at 5 pm. 715-432-6285

Central Wisconsin Symphony Orchestra Chamber Concert · Sun. 6/23, Lonely Oak Farm, Milladore. Starts at 10 am. 715-432-6285

Walk for Wags 2024 · Sun. 6/23, hosted by the Portage County Humane Society at Pfiffner Pioneer Park, Stevens Point. Go for a 1.5 mile walk along the Wisconsin River. Proceeds benefit the humane society. Starts at 11 am. \$45-\$55. hspcwi.org

Wausau Woodchucks Game · Sun. 6/23, Athletic Park, Wausau. Woodchucks vs. Green Bay Rockers. Starts at 1:05 pm. northwoodsleague.com/wausau-woodchucks/

Wausau Woodchucks Game · Mon. 6/24, Athletic Park, Wausau. Woodchucks vs. Green Bay Rockers. Starts at 6:05 pm. northwoodsleague.com/wausau-woodchucks/

Pizza on the Patio · Wed. 6/26, Willow Springs Garden, Wausau. Enjoy all you can eat homemade pizza, salad, bread, a featured dish, dessert, lemonade, milk, water and live music. Starts at 6 pm. \$16/person, \$5/person ages 6-10, free for ages 5 and under. willowspringsgardens.com

Concert on the Square: Dig Deep · Wed. 6/26, 400 Block, Wausau. Bluegrass. Starts at 6 pm. wausauevents.org

Kassi Valazza w/ Sequioa · Wed. 6/26, Lamplight Sessions, 224 Main St, Mosinee. Psychedelic, folk-rock, country. Doors open at 6 pm. Show starts at 7 pm. \$65. lamplightsessions.com

Pizza in the Orchard · Thurs. 6/27, Rock Ridge Orchard, Edgar. Enjoy a pizza buffet and music from Hyde. Bring a lawn chair. Doors open at 4 pm. Music starts at 6 pm. \$18 adults, \$6 children 11 and under. 715-370-4083

Indulge your senses



Indulge your senses at **'The Chocolate Shop'** and **'The Chocolate Café'**, your haven for exquisite chocolates. For years we have been bringing you the world's finest gourmet chocolates and promise to continue bringing a diverse collection that tantalizes your taste buds. Impress your loved ones by bringing delectable chocolates from our Shop, or unwind in our cozy café while enjoying some of our gelato or famous Drinking Chocolate. Visit us today, and ***embark on a delightful chocolate adventure!***

The Chocolate Shop | 532 S. 3rd Ave. Wausau WI. 54401 | (715) 870 2153
The Chocolate Café | 300 N. 3th Street, Wausau, WI. 54403 | (715) 298 1164

SUMMER FUN CALENDAR

Levitt Amp Concert Series: Li'l Ed & The Blues Imperials · Thurs. 6/27, Pfiﬀner Park Bandshell, Stevens Point. Blues. Starts at 6 pm. createportagecounty.org

Knock Point · Thurs. 6/27, Tiki Beach Bar & Grill, Mosinee. Rock. Starts at 6 pm. 715-341-2232

Alive Again: A Tribute To Chicago · Thurs. 6/27, Campanile Center for the Arts, Minocqua. Tribute concert to the Rock & Roll Hall of Fame band Chicago. Starts at 7 pm. \$30/adult, \$15/student. campanilecenter.org

Juliet & The Montagues · Fri. 6/28, Stoney Acres, Athens. Country, classic rock, funk, R&B, variety. Starts at 5 pm. 715-432-6285

Wausau Woodchucks Game · Fri. 6/28, Athletic Park, Wausau. Woodchucks vs. Eau Claire Express. Starts at 6:35 pm. northwoodsleague.com/wausau-woodchucks/

Hub City Concert Series: Chris Haise Band · Fri. 6/28, Wenzel Family Plaza, Marshfield. Indie folk rock. Starts at 7 pm. visitmarshfield.com

Rec Release & Intro to Kayaking Lessons · Sat.-Sun. 6/29-6/30, Wausau Whitewater Park, 200 River Dr, Wausau. Paddle or slalom in the waters. Learn how to kayak. ACA membership, helmet, boat floatation, life jacket required. Kayaking intro starts at 9 am. Rec release starts at 10 am. \$20 per day, \$30 per weekend, \$10 ACA fee, \$55 for kayaking lessons. wausauwhitewater.org

34th Annual Event in Bevent · Sat.-Sun. 6/29-6/30, St. Ladislaus Parish, Bevent. Indoor Polka Mass w/Maroszek Bros at 4 pm, Maroszek Bros from 5 pm-8 pm and music from Blame it on Waylon 8 pm-midnight on Sat. Indoor Polka Mass w/The New Generation at 10:10 am, music from 11 am-6 pm with Alternating the New Generation and The Jerry Schmitt Band, food, refreshments, games, cherry tree, kountry kafe, cash-mini-ATV raffles, inflatable bounce slide and more on Sun. Bingo at noon on Sun. Free admission. 715-446-3060

Kristen Balgord Jazz Sax · Sat. 6/29, Stoney Acres, Athens. Jazz. Starts at 5 pm. 715-432-6285

Wausau Woodchucks Game · Sat. 6/29, Athletic Park, Wausau. Woodchucks vs. Duluth Huskies. Starts at 6:05 pm. northwoodsleague.com/wausau-woodchucks/

Boomboxx · Sat. 6/29, Tiki Beach Bar & Grill, Mosinee. Classic rock. Starts at 6:30 pm. 715-341-2232

Independence Day Celebration and Car Show · Sun. 6/30, Willow Springs Garden, Wausau. Crafters, kids games, music, food & refreshments, wagon rides, tractor parade at 2 pm, awesome fireworks & stick pony rodeo at 12:30 pm. Starts at 10 am. Free admission. willowspringsgardens.com

Wausau Woodchucks Game · Sun. 6/30, Athletic Park, Wausau. Woodchucks vs. Duluth Huskies. Starts at 1:05 pm. northwoodsleague.com/wausau-woodchucks/

Ill Nino w/ A Killer's Confession, Scarlet View & To Be Alive · Sat. 6/30, The Q & Z Expo Center, Ringle. Rock & metal. Doors open at 6 pm. Show starts at 7 pm. \$25 advance, \$30 at the door. qzexpoctr.com

JULY

Lyle Lovett & his Large Band · Mon. 7/1, Grand Theater, Wausau. Country, swing, jazz, folk, gospel & blues. Starts at 7:30 pm. \$61.50-\$111.50. grandtheater.org

22nd Annual NORTH CENTRAL WISCONSIN **MASTER GARDENERS** 

Garden Walk 2024

Six Gardens in the north part of Wausau
Tickets \$10

Garden Addresses:

622 S. 36th Avenue
3407 W. Wausau Avenue
145931 County Road A
244371 County Road WW
160557 River Hills Road
1800 N. 1st Avenue
Monk Botanical Gardens

Beginning Monday, May 1st
Tickets will be available at:
UW Extension Office
212 River Dr., Suite 3, Wausau


6414 SCHOFIELD AVE. WESTON WI

or at any of the gardens
on the days of the tour.
Find us on 

More information at <https://bit.ly/4cQTIfV>

Friday, July 26, 1pm-7pm
Saturday, July 27, 9am-3pm



371058



Rennes Health & Rehab Center

Rehabilitative Services & Skilled Nursing



- Private Rooms
- 24-Hour Nursing Care
- In-House Staff Therapists
- Home Safety Evaluation
- Outpatient or Inpatient Rehab
- Physical, Occupational & Speech Therapy
- One-to-One Patient-to-Therapist Treatment
- State-of-the-Art Rehab Equipment & Therapy Gyms

For more information or a tour:
Weston & Rhinelander WI
www.rennesgroup.com



Renaissance by Rennes

Assisted Living Apartment Community

- Individual Private Apartments
- Wireless Internet/Cable Included
- Medication Monitoring
- Transportation & Outings
- Healthy Home-cooked Meals
- Weekly Housekeeping
- 24-Hour Care Team
- Full-Time Registered Nursing
- Beauty Salon/Barber Shop and Spa

For more information or a tour:
Weston & Wisconsin Rapids, WI
www.rennesgroup.com



375924

368109.1.pdf

The file is missing!

SUMMER FUN CALENDAR



Seth Brown Duo · Tues. 7/2, Hodag Park, 509 Hodag Park Dr, Rhinelander. Americana, country, folk. Starts at 6:30 pm. 715-362-1975

Wausau Woodchucks Game · Tues. 7/2, Athletic Park, Wausau. Woodchucks vs. Madison Mallards. Starts at 6:35 pm. northwoodsleague.com/wausau-woodchucks/

Concert on the Square: The Third Wheels · Wed. 7/3, 400 Block, Wausau. Variety. Starts at 6 pm. wausauevents.org

Riverfront Rendezvous 2024 · Thurs.-Sat. 7/4-7/6, Piffner Pioneer Park, Stevens Point. Live music, family activities & fireworks. Thurs. lineup: Spin Doctors. Fri. lineup: Horseshoes & Hand Grenades. Sat. lineup: Reverend Peyton's Big Damn Band. Free. More info at stevenspoint.com

Spicy Tie Band · Thurs. 7/4, Tiki Beach Bar & Grill, Mosinee. Rock & roll. Starts at 6:30 pm. 715-341-2232

Festival Fireworks · Thurs. 7/4, hosted by Wausau Events at Wausau Downtown Airport, Wausau. Bring a blanket or chair. Starts around 9:30 pm. wausauevents.org

Jesse & The Medicine Men · Fri. 7/5, Stoney Acres, Athens. Country. Starts at 5 pm. 715-432-6285

Wausau Woodchucks Game · Fri. 7/5, Athletic Park, Wausau. Woodchucks vs. Fond du Lac Dock Spiders. Starts at 6:35 pm. northwoodsleague.com/wausau-woodchucks/

Central Standard Jazz · Sat. 7/6, Stoney Acres, Athens. Jazz. Starts at 5 pm. 715-432-6285

380465.1.pdf
The file is missing!

SUMMER FUN CALENDAR

Wausau Woodchucks Game · Sat. 7/6, Athletic Park, Wausau. Woodchucks vs. Fond du Lac Dock Spiders. Starts at 6:05 pm. northwoodsleague.com/wausau-woodchucks/

Wisconsin Valley Golf Association Tournament · Sun. 7/7, Wisconsin River Golf Course, Stevens Point. Individual stroke golf tournament open to those who enjoy golf. Starts at 8 am. \$55. wivalleygolf.org

Wausau Woodchucks Game · Sun. 7/7, Athletic Park, Wausau. Woodchucks vs. Wisconsin Rapids Rafters. Starts at 1:05 pm. northwoodsleague.com/wausau-woodchucks/

Concert on the Square: Rising Phoenix · Wed. 7/10, 400 Block, Wausau. Classic rock. Starts at 6 pm. wausauevents.org

Pizza on the Patio · Wed. 7/10, Willow Springs Garden, Wausau. Enjoy all you can eat homemade pizza, salad, bread, a featured dish, dessert, lemonade, milk, water and live music. Starts at 6 pm. \$16/person, \$5/person ages 6-10, free for ages 5 and under. willowspringsgardens.com

Hodag Country Festival 2024 · Thurs.-Sun. 7/11-7/14, 4270 River Road, Rhinelander. Thurs. lineup: Ashley McBryde, Neal McCoy, Brett Westgrove, Jenna Jane; Fri. lineup: Bailey Zimmerman, Chase Rice, Chayce Beckham; Sat. lineup: Chris Young, Walker Hayes, Terri Clark, Priscilla Block, Chris Kroeze; Sun. lineup: Chris Janson, Corey Kent, Kimberly Perry, Aaron Tippin, Graham Barham. More info at hodag.com

Levitt Amp Concert Series: Emmitt James · Thurs. 7/11, PfiFFner Park Bandshell, Stevens Point. Hip-hop. Starts at 6 pm. createportagecounty.org

Justin Willman: Illusionati Tour · Thurs. 7/11, Grand Theater, Wausau. Enjoy an evening of magic, comedy & mind-control. Starts at 7 pm. \$35-\$150. grandtheater.org

Taste N Glow Balloon Fest · Fri.-Sun. 7/12-7/13, Town of Stettin, 141678 Stettin Dr, Wausau. Enjoy balloon launches, food, family-friendly activities & more. Start time TBA. Free. tastenglowfest.com

Miss Myra & The Moonshiners · Fri. 7/12, Stoney Acres, Athens. Jazz. Starts at 5 pm. 715-432-6285

Hub City Concert Series: Charlieboy · Fri. 7/12, Wenzel Family Plaza, Marshfield. Indie alternative rock. Starts at 7 pm. visitmarshfield.com



MARATHON COUNTY PUBLIC LIBRARY SUMMER PROGRAM 2024

Discover **books, crafts, music, science, nature,** and **rewards for reading** at your local MCPL this summer!



MORE INFO: 715.261.7220
www.mcpl.us/slpl

▲ **FREE ACTIVITY BOOK!** ▲
(available at all MCPL locations)



WAUSAU | ATHENS | EDGAR | HATLEY | MARATHON CITY | MOSINEE | ROTHSCHILD | SPENCER | STRATFORD





The People's Choice · Tues. 7/16, Hodag Park, 509 Hodag Park Dr, Rhinelander. Variety. Starts at 6:30 pm. 715-362-1975

Concert on the Square: Brass Differential · Wed. 7/17, 400 Block, Wausau. Jazz, R&B, blues, soul, funk. Starts at 6 pm. wausauevents.org

Fun@5 at the Island · Thurs. 7/18, hosted by the Greater Wausau Chamber of Commerce at Clark Island, Wausau. Network with others and enjoy appetizers and beverages. You can also get a chance to win door prizes. Must be 21 or older to attend. Starts at 5 pm. \$10/members online, \$15 members at the door, \$20/non members online, and \$25 non members at the door. wausauchamber.com

Booze and Botany · Thurs. 7/18, hosted by Wausau Botanic Gardens at Whitewater Music Hall, Wausau. Guests can sample cocktails mixed with herbs and fruit. 21+ event. Start time TBA. \$65/person, 20% discount for members. wausaubotanicgardens.org

Best Practice · Thurs. 7/18, Tiki Beach Bar & Grill, Mosinee. Rock & country. Starts at 6 pm. 715-341-2232

Rec Release & Intro to Kayaking Lessons · Sat.-Sun. 7/13-7/14, Wausau Whitewater Park, 200 River Dr, Wausau. Paddle or slalom in the waters. Learn how to kayak. ACA membership, helmet, boat floatation, life jacket required. Kayaking intro starts at 9 am. Rec release starts at 10 am. \$20 per day, \$30 per weekend, \$10 ACA fee, \$55 for kayaking lessons. wausauwhitewater.org

Zopel Family Jazz · Sat. 7/13, Stoney Acres, Athens. Jazz. Starts at 5 pm. 715-432-6285

Luma Knotty · Sun. 7/14, Tiki Beach Bar & Grill, Mosinee. Funk, rock & reggae. Starts at 1 pm. 715-341-2232

Tim Buchholz Quintet · Sun. 7/14, Kickbusch Plaza, Wausau. Jazz. Starts at 5 pm. Free. rivervalleyjazz.org

Wausau Woodchucks Game · Mon. 7/15, Athletic Park, Wausau. Woodchucks vs. Green Bay Rockers. Starts at 6:05 pm. northwoodsleague.com/wausau-woodchucks/

Main Street Music: Christy Anna · Tues. 7/16, hosted by Marathon City 2020 Ltd at Marathon City Heritage Center Park, Marathon City. Country & originals. Starts at 6 pm. facebook.com/marathoncity2020



Proudly Serving our Neighbors from our Rothschild & Stevens Point offices
Providing expert Health, Life and Dental Insurance consultations at no cost.

ASHLEY



715-341-5050
3273 Church Street
Stevens Point

New to our team
DAVE



715-727-3011
903 Grand Avenue
Rothschild

Here to assist with both
Medicare & Marketplace Products

We work with many of the most popular carriers, Security Health Plan, Aspirus Health Plan, Anthem, WellCare, Humana, Aetna, WPS, Physicians Mutual, Delta Dental and many more!

376293

SUMMER FUN CALENDAR

Levitt Amp Concert Series: Kommuna

Lox · Thurs. 7/18, Pfiffner Park Bandshell, Stevens Point. Folk. Starts at 6 pm. createportagecounty.org

Central Wisconsin Symphony Orchestra

· Fri. 7/19, Stoney Acres, Athens. Celtic music. Starts at 5 pm. 715-432-6285

Wausau Woodchucks Game

· Fri. 7/19, Athletic Park, Wausau. Woodchucks vs. Wisconsin Rapids Rafters. Starts at 6:35 pm. northwoodsleague.com/wausau-woodchucks/

Hub City Concert Series: Wire & Nail

· Fri. 7/19, Wenzel Family Plaza, Marshfield. Country rock & roll. Starts at 7 pm. visitmarshfield.com

Meaghan Owens & Friends

· Sat. 7/20, Stoney Acres, Athens. Americana, country, folk, variety. Starts at 5 pm. 715-432-6285

Wausau Woodchucks Game

· Sat. 7/20, Athletic Park, Wausau. Woodchucks vs. Lakeshore Chinooks. Starts at 6:05 pm. Woodchucks.com

Shotgun Jane

· Sat. 7/20, Tiki Beach Bar & Grill, Mosinee. Rock, pop & country. Starts at 6:30 pm. 715-341-2232

Wisconsin Valley Golf Association

Tournament · Sun. 7/21, Trapp River Golf Course, Wausau. Individual stroke golf tournament open to those who enjoy golf. Starts at 8 am. \$55. wivalleygolf.org

Wausau Woodchucks Game

· Sun. 7/21, Athletic Park, Wausau. Woodchucks vs. Lakeshore Chinooks. Starts at 1:05 pm. northwoodsleague.com/wausau-woodchucks/

Daddio

· Sun. 7/21, Kickbusch Plaza, Wausau. Jazz. Starts at 5 pm. Free. rivervalleyjazz.org

Dinner in the Vineyard

· Sun. 7/21, Willow Springs Garden, Wausau. Enjoy a specialty-themed cocktail, appetizers, salad greens, homemade bread, two meat entrees, potatoes, rice, grilled veggies, dessert, after-dinner drink and wagon rides. Starts at 6 pm. \$70/person. willowspringsgardens.com

Central Wisconsin Symphony Orchestra

Concert · Tues. 7/23, Schmeeckle Reserve, Stevens Point. Bring your own chair. Starts at 6 pm. Free. cwso.org

Pizza on the Patio

· Wed. 7/24, Willow Springs Garden, Wausau. Enjoy all you can eat homemade pizza, salad, bread, a featured dish, dessert, lemonade, milk, water and live music. Starts at 6 pm. \$16/person, \$5/person ages 6-10, free for ages 5 and under. willowspringsgardens.com

Concert on the Square: Johnny & The

MoTones · Wed. 7/24, 400 Block, Wausau. Jazz & blues. Starts at 6 pm. wausauevents.org

Hub City Days

· Thurs.-Sat. 7/25-7/27, downtown Central Ave & Wenzel Family Plaza, Marshfield. Car & bike show, bounce houses, games, brew fest, beer garden, live music, movie at Wenzel Park at dusk on Thurs. and more. mainstreetmarshfield.com

Central Wisconsin Symphony Orchestra

Concert · Thurs. 7/25, Wausau Botanic Gardens, Wausau. Bring your own chair. Starts at 5 pm. Free. cwso.org



VILLAGE COOPERATIVE OF
Wausau

DISCOVER YOUR **CAREFREE LIFESTYLE**

Have more time to enjoy the things you love - **Village Cooperative of Wausau** is a community for adults 55+ who want ownership, no maintenance and to be close to friends and family at an excellent value.

254672

Village Cooperative of Wausau

715.675.0287

1508 Merrill Avenue, Wausau, WI 54401



Willow Springs Garden LLC



2024 FESTIVALS & PUBLIC EVENTS

WEDNESDAY, JUNE 12

PIZZA ON THE PATIO
6:00 - 8:00 pm



WEDNESDAY, JULY 10

PIZZA ON THE PATIO
6:00 - 8:00 pm



THURSDAY, AUGUST 1

DINNER IN THE VINEYARD
6:00 - 9:00 pm



SUNDAY, SEPTEMBER 1

ANTIQUE TRACTOR PULL
Come enjoy the antique tractor pull.

THURSDAY, JUNE 13

GRILLED STEAK DINNER
6:00 - 8:00 pm

FRI. & SAT., JULY 12 & 13

MURDER MYSTERY DINNER
5:30 am - 9:30 pm
Masquerade Mystery

WEDNESDAY, AUGUST 7

PIZZA ON THE PATIO
6:00 - 8:00 pm



MONDAY, SEPTEMBER 2

LABOR DAY TRACTOR PULL
Starting at 9:00 am
Tractor & truck weigh-in at 9 am. Pulling starts at 11 am. Come enjoy beef brisket, ribs, burgers, loaded baked potatoes and more. Great area to watch the pulls while enjoying a beer.

THURSDAY, JUNE 20

FISH BOIL
6:00 - 7:30 pm
Boiled white fish and farm fresh harvest vegetables, potatoes, onions, carrots and other sides. Coffee, water, milk and lemonade. All you can eat or until gone.

WEDNESDAY, JULY 17

SHRIMP BOIL
6:00 - 7:30 pm
Shrimp and farm fresh harvest vegetables, potatoes, onions, carrots and other sides. Coffee, water, milk and lemonade. All you can eat or until gone.

WEDNESDAY, AUGUST 14

DINNER IN THE VINEYARD
6:00 - 9:00 pm



WEDNESDAY, SEPTEMBER 4

PIZZA ON THE PATIO
6:00 - 8:00 pm



WEDNESDAY, JUNE 26

PIZZA ON THE PATIO
6:00 - 8:00 pm



SUNDAY, JULY 21

DINNER IN THE VINEYARD
6:00 - 9:00 pm



THURSDAY, AUGUST 15

DINNER IN THE VINEYARD
6:00 - 9:00 pm



THURSDAY, SEPTEMBER 5

DINNER IN THE VINEYARD
6:00 - 9:00 pm



SUNDAY, JUNE 30

INDEPENDENCE DAY FESTIVAL & CAR SHOW
10:00 am - 10:00 pm
Crafters, kids games, music, food and refreshments, car show, horse drawn wagon rides tractor parade at 2 pm, awesome fireworks! No admission fee • Stick Pony Rodeo 12:30 pm



WEDNESDAY, JULY 24

PIZZA ON THE PATIO
6:00 - 8:00 pm



THURSDAY, AUGUST 22

FISH BOIL
6:00 - 7:30 pm

SUNDAY, SEPTEMBER 8

POTATO PANCAKE BREAKFAST IN THE BARN
8:30 am - 1:00 pm

THURSDAY, JULY 25

DINNER IN THE VINEYARD
6:00 - 9:00 pm



WEDNESDAY, AUGUST 28

DINNER IN THE VINEYARD
6:00 - 9:00 pm



Like us on



SUNDAY, JULY 7

OUTDOOR TEA PARTY "WINNIE THE POOH"
11:00 am - 2:00 pm

WEDNESDAY, JULY 31

DINNER IN THE VINEYARD
6:00 - 9:00 pm



SUNDAY, SEPTEMBER 1

RIBS, WINE & BARLEY FEST
Wine & Beer Sampling, Live Music
9:00 am - 3:00 pm

3.6 mi. North of Fleet Farm on Hwy. K to Hillcrest Dr. West 1/2 mil. Watch for signs!
5480 Hillcrest Dr., Wausau • 715-675-1171 • www.willowspringsgardens.com

SUMMER FUN CALENDAR

Dinner in the Vineyard · Thurs. 7/25, Willow Springs Garden, Wausau. Enjoy a specialty-themed cocktail, appetizers, salad greens, homemade bread, two meat entrees, potatoes, rice, grilled veggies, dessert, after-dinner drink and wagon rides. Starts at 6 pm. \$70/person. willowsspringsgardens.com

Levitt Amp Concert Series: Lone Piñon · Thurs. 7/25, Pfiffner Park Bandshell, Stevens Point. New Mexican roots. Starts at 6 pm. createportagecounty.org

Wausau Woodchucks Game · Thurs. 7/25, Athletic Park, Wausau. Woodchucks vs. Green Bay Rockers. Starts at 6:35 pm. northwoodsleague.com/wausau-woodchucks/

Straight No Chaser Summer: The 90's · Thurs. 7/25, Grand Theater, Wausau. A capella. Starts at 7:30 pm. \$42-\$72. grandtheater.org

381946.1.pdf

The file is missing!

THE TAMARACKS



South Beach Up North Radio Show · Fri. 7/26, WPR's Route 51. Starts at 10 am. sobechamberensemble.org

The Tamaracks · Fri. 7/26, Stoney Acres, Athens. Rock & blues. Starts at 5 pm. 715-432-6285

Hub City Concert Series: The Verve Pipe · Fri. 7/26, Wenzel Family Plaza, Marshfield. Alternative rock. Starts at 7 pm. visitmarshfield.com

Hardwired Metallica Tribute 2024 · Fri. 7/26, North Star Mohican Casino Resort, Bowler. Metallica tribute concert. Doors open at 7 pm. Starts at 8 pm. \$25. northstarcasinoresort.com

Mark Zelich Golf Classic 2024 · Sat.-Sun. 7/27-7/28, Stevens Point Country Club, Stevens Point. Two day golf tournament for ages 16 and older. Starts at 8 am. \$140. wivalleygolf.org

The Hometown Harmony Club · Sat. 7/27, Stoney Acres, Athens. Country. Starts at 5 pm. 715-432-6285

Mozart on the Move · Sat. 7/27, hosted by South Beach Up North at the Unitarian Universalist Church, Wausau. Mozart featuring a student string quartet. Starts at 6 pm. 305-389-1297

Wausau Woodchucks Game · Sun. 7/28, Athletic Park, Wausau. Woodchucks vs. Green Bay Rockers. Starts at 1:05 pm. northwoodsleague.com/wausau-woodchucks/

Bob Kase Quintet · Sun. 7/28, Kickbusch Plaza, Wausau. Jazz. Starts at 5 pm. Free. riversvalleyjazz.org

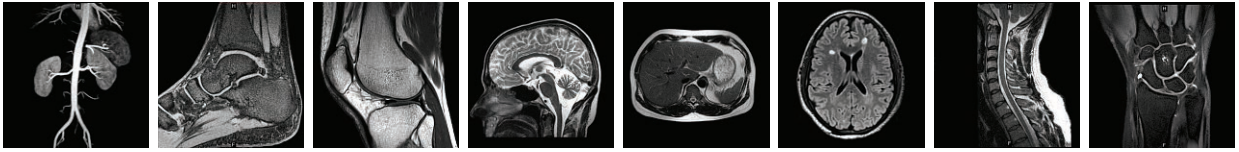
Mendelssohn & Shostakovich String Quartets · Sun. 7/28, hosted by South Beach Up North at Wausau Conservatory of Music, Wausau. Starts at 6 pm. 305-389-1297

Northwood Skitchers · Tues. 7/28, Hodag Park, 509 Hodag Park Dr, Rhinelander. Classic rock & blues. Starts at 6:30 pm. 715-362-1975

Wausau Woodchucks Game · Tues. 7/30, Athletic Park, Wausau. Woodchucks vs. Wisconsin Rapids Rafters. Starts at 6:35 pm. northwoodsleague.com/wausau-woodchucks/

OPEN MRI OF WAUSAU

SUPERIOR IMAGES, DIAGNOSTIC CONFIDENCE & PATIENT COMFORT



Now the high quality images you expect of a conventional MRI system are available with a true Open MRI scanner that patients prefer.

The newest, most advanced and powerful Open MRI scanner available delivers:

- Best quality image available due to new High Field strength
- Latest technology reduces scan time
- The region's ONLY true Open MRI design with 270 degree viewing that puts even the most claustrophobic patients at ease
- Unmatched room and comfort for large patients with an extra-wide table and weight limit up to 660 pounds



OPEN MRI OF WAUSAU

www.openmriofwausau.com (715) 847-2020
4005 Community Center Drive, Suite 120, Weston, WI 54476



371677

381837.1.pdf

The file is missing!

SUMMER FUN CALENDAR

Wisconsin Valley Fair · Tues.-Sun. 7/30-8/4, Marathon Park, Wausau. Check out the carnival, concerts and more. Concert lineup: Night Ranger, LOCASH & Gabby Barrett. Rodeo on Sat. & Demo Derby on Sun. \$22 season admission, \$18 season parking, \$8 daily admission, \$30 unlimited ride wristband. wisconsinvalleyfair.com

Concert on the Square: Copper Box · Wed. 7/31, 400 Block, Wausau. Zydeco, polka, classic rock, variety. Starts at 6 pm. wausauevents.org

Dinner in the Vineyard · Wed. 7/31, Willow Springs Garden, Wausau. Enjoy a specialty-themed cocktail, appetizers, salad greens, homemade bread, two meat entrees, potatoes, rice, grilled veggies, dessert, after-dinner drink and wagon rides. Starts at 6 pm. \$70/person. willowspringsgardens.com

AUGUST

Pizza in the Orchard · Thurs. 8/1, Rock Ridge Orchard, Edgar. Enjoy a pizza buffet and a variety of music from Double Barrel. Bring a lawn chair. Doors open at 4 pm. Music starts at 6 pm. \$18 adults, \$6 children 11 and under. 715-370-4083

Dinner in the Vineyard · Thurs. 8/1, Willow Springs Garden, Wausau. Enjoy a specialty-themed cocktail, appetizers, salad greens, homemade bread, two meat entrees, potatoes, rice, grilled veggies, dessert, after-dinner drink and wagon rides. Starts at 6 pm. \$70/person. willowspringsgardens.com

Levitt Amp Concert Series: Leon Timbo · Thurs. 8/1, Piffner Park Bandshell, Stevens Point. Soul, gospel, blues, funk, folk, R&B, dance. Starts at 6 pm. createportagecounty.org

Beethoven & Beach Piano Trios · Thurs. 8/1, hosted by South Beach Up North at Woodson Art Museum, Wausau. Starts at 6 pm. Free. 305-389-1297

Wausau Woodchucks Game · Thurs. 8/1, Athletic Park, Wausau. Woodchucks vs. Thunder Bay Border Cats. Starts at 6:35 pm. northwoodsleague.com/wausau-woodchucks/



Matt & Jody from the Station · Fri. 8/2, Stoney Acres, Athens. Variety. Starts at 5 pm. 715-432-6285

Wausau Woodchucks Game · Fri. 8/2, Athletic Park, Wausau. Woodchucks vs. Thunder Bay Border Cats. Starts at 6:35 pm. northwoodsleague.com/wausau-woodchucks/

Rec Release & Intro to Kayaking Lessons · Sat.-Sun. 8/3-8/4, Wausau Whitewater, 200 River Dr, Wausau. Paddle or slalom in the waters. Learn how to kayak. ACA membership, helmet, boat floatation, life jacket required. Kayaking intro starts at 9 am. Rec release starts at 10 am. \$20 per day, \$30 per weekend, \$10 ACA fee, \$55 for kayaking lessons. wausauwhitewater.org

Central Wisconsin Symphony Orchestra Concert · Sat. 8/3, Village Gardens, Plover. Bring your own chair. Starts at 11 am. Free. cwso.org

Beethoven & Beach Piano Trios · Sat. 8/3, hosted by South Beach Up North at Chestnut Center for the Arts, Marshfield. Starts at 4 pm. Free. 305-389-1297

Local Heroes · Sat. 8/3, Stoney Acres, Athens. Variety. Starts at 5 pm. 715-432-6285

COMPREHENSIVE RETIREMENT PLANNING

RetireWithBuska.com

Wausau 715.355.4445

Eau Claire 715.318.4540



Retirement Income & Insurance Solutions

BUSKA RETIREMENT SOLUTIONS

As an independent insurance firm, we find the best rates and products to fit your specific needs.



Investment Management

BUSKA WEALTH MANAGEMENT

We provide customized solutions to help you achieve your long-term financial goals.



Business Retirement Plans

BUSKA WEALTH MANAGEMENT

We always keep you and your plan participants' best interests in mind when making investment decisions.



Medicare & Health Insurance Plans

BUSKA RETIREMENT SOLUTIONS

We address your retirement health needs and concerns by crafting a comprehensive health care strategy.



NEW Estate Plans

BUSKA WEALTH MANAGEMENT

We can help you leave a legacy and preserve family harmony, regardless of the size of your estate.



Tax Strategies & Preparation

LEGACY TAX SOLUTIONS

We file both personal and business tax returns – maximizing your credits and minimizing your worries.



estate guru

Estate planning just got easy

Smart, attorney-backed, legally sound documents

Powers of Attorney, Wills, and Trusts - all costing on average **70% less** than traditional estate attorney fees. Contact us today to see if you qualify for **Financial & Healthcare Powers of Attorney on us!***

*Must have at least \$50,000 of investable assets



Advisory services are offered through Buska Wealth Management, LLC, an SEC Investment Advisor. Insurance products and services are offered through Buska Retirement Solutions, Inc., an affiliated company. Tax services are offered through Legacy Tax Solutions, LLC, an affiliated company. Buska Retirement Solutions, Inc. and Buska Wealth Management, LLC do not provide legal advice. Estate planning services offered through Estate Guru. Buska Retirement Solutions, Inc. and Buska Wealth Management, LLC are not affiliated with or endorsed by the Social Security Administration, federal Medicare program, or any other government agency. Call to speak with a licensed agent to discuss your Medicare Health Plan options including Medicare Supplement, Medicare Advantage, and Part D Prescription Drug Plans.

Wausau Woodchucks Game · Sat. 8/3, Athletic Park, Wausau. Woodchucks vs. Madison Mallards. Starts at 6:05 pm. northwoodsleague.com/wausau-woodchucks/

Crankin Yankees · Sat. 8/3, Tiki Beach Bar & Grill, Mosinee. Rock & country. Starts at 6:30 pm. 715-341-2232

Elvis Elvis Elvis · Sat. 8/3, North Star Mohican Casino Resort, Bowler. Elvis tribute performed by Tim 'E'. Doors open at 7 pm. Starts at 8 pm. \$25. northstarcasinoresort.com

Wisconsin Valley Golf Association Tournament · Sun. 8/4, Pine Valley Golf Course, Marathon City. Individual stroke golf tournament open to those who enjoy golf. Starts at 8 am. \$55. wivalleygolf.org

Ziji · Sun. 8/4, Kickbusch Plaza, Wausau. Jazz. Starts at 5 pm. Free. rivervalleyjazz.org

Wausau Woodchucks Game · Mon. 8/5, Athletic Park, Wausau. Woodchucks vs. Kenosha Kingfish. Starts at 6:05 pm. northwoodsleague.com/wausau-woodchucks/

SUMMER FUN CALENDAR

Wausau Woodchucks Game · Tues. 8/6, Athletic Park, Wausau. Woodchucks vs. Kenosha Kingfish. Starts at 6:35 pm. northwoodsleague.com/wausau-woodchucks/

Pizza on the Patio · Wed. 8/7, Willow Springs Garden, Wausau. Enjoy all you can eat homemade pizza, salad, bread, a featured dish, dessert, lemonade, milk, water and live music. Starts at 6 pm. \$16/person, \$5/person ages 6-10, free for ages 5 and under. willowspringsgardens.com

Wausau Woodchucks Game · Wed. 8/7, Athletic Park, Wausau. Woodchucks vs. Minnesota Mud Puppies. Starts at 6:35 pm. northwoodsleague.com/wausau-woodchucks/

Blame it on Waylon · Thurs. 8/8, Tiki Beach Bar & Grill, Mosinee. Country. Starts at 6 pm. 715-341-2232

Levitt Amp Concert Series: Bassel & The Supernaturals · Thurs. 8/8, Pfiffner Park Bandshell, Stevens Point. Funk. Starts at 6 pm. createportagecounty.org

Wausau Woodchucks Game · Thurs. 8/8, Athletic Park, Wausau. Woodchucks vs. Minnesota Mud Puppies. Starts at 6:35 pm. northwoodsleague.com/wausau-woodchucks/

Joyann Parker · Fri. 8/9, Stoney Acres, Athens. Variety. Starts at 5 pm. 715-432-6285

Wausau Woodchucks Game · Fri. 8/9, Athletic Park, Wausau. Woodchucks vs. Kenosha Kingfish. Starts at 6:35 pm. northwoodsleague.com/wausau-woodchucks/

46th Annual Shawano Folk Music Festival · Fri.-Sun. 8/9-8/11, Mielke Arts Center & Mielke Park, Shawano. Lineup: John Stano, Emma's Revolution, Gaines & Wagoner, Mark Dvorak, Ken Lonquist & the O'Darby Irish Pub Band, Lil' Rev, Heather Styka, South for Winter & more. Starts at 7 pm. \$15-\$80. shawanofestival.org

Central Wisconsin Symphony Orchestra Concert · Sat. 8/10, Wausau Botanic Gardens, Wausau. Bring your own chair. Starts at 10 am. Free. cwso.org

Do the **incredible** this summer

with the help of IncredibleBank.

incrediblebankSM
incrediblebank.com ■ Member FDIC





G3 Industries is one of the leading metal forming and fabrication companies in the Midwest, and a great place to build a career. We are headquartered in Kronenwetter, the heart of Wisconsin, and a wonderful place to call home. Learn more about G3, and discover how you can join our family.

G3

INDUSTRIES Forming, Fabrication and Beyond

G3Industries.com

375935

Wausau • Weston • Mosinee

River Life

Voted
Best
Ice
Cream
in the
Wausau
Area
Year
After
Year!

Rib Mtn • Minocqua • Rhinelander

City Pages
"Best Of" Survey



briqsoftserve.com

SUMMER FUN CALENDAR

JESSE AND THE MEDICINE MEN



Paddle Quest 2024 Homecoming · Sat.-Sun. 8/10-8/11, Bahamas On The River, Stevens Point. Go on an adventure across the river, meet other people, solve puzzles and complete challenges. Starts at 10 am. Free. Paddlequest.org

The Tamaracks · Sat. 8/10, Stoney Acres, Athens. Rock & blues. Starts at 5 pm. 715-432-6285

Wausau Woodchucks Game · Sat. 8/10, Athletic Park, Wausau. Woodchucks vs. Kenosha Kingfish. Starts at 6:35 pm. northwoodsleague.com/wausau-woodchucks/

Janet Planet · Sun. 8/11, Kickbusch Plaza, Wausau. Jazz. Starts at 5 pm. Free. rivervalleyjazz.org

Main Street Music: Curt Pliske & Polka Spirit · Tues. 8/13, hosted by Marathon City 2020 Ltd at Marathon City Heritage Center Park, Marathon City. Polka. Starts at 6 pm. facebook.com/marathoncity2020

Uncharted Waters · Tues. 8/13, Hodag Park, 509 Hodag Park Dr, Rhinelander. Acoustic. Starts at 6:30 pm. 715-362-1975

Concert on the Square: Unity The Band · Wed. 8/14, 400 Block, Wausau. Reggae rock. Starts at 6 pm. wausauevents.org

Dinner in the Vineyard · Wed. 8/14, Willow Springs Garden, Wausau. Enjoy a specialty-themed cocktail, appetizers, salad greens, homemade bread, two meat entrees, potatoes, rice, grilled veggies, dessert, after-dinner drink and wagon rides. Starts at 6 pm. \$70/person. willowspringsgardens.com

Dinner in the Vineyard · Thurs. 8/15, Willow Springs Garden, Wausau. Enjoy a specialty-themed cocktail, appetizers, salad greens, homemade bread, two meat entrees, potatoes, rice, grilled veggies, dessert, after-dinner drink and wagon rides. Starts at 6 pm. \$70/person. willowspringsgardens.com

Central Wisconsin Military Show · Fri.-Sat. 8/16-8/17, Motorama Auto Museum, Aniwa. Check out military vehicles, re-enactments, swap meet, live music and more. Starts at 9 am. \$10. Free for kids 12 and under. motoramaautomuseum.org

Jesse & The Medicine Men · Fri.-Sat. 8/16-8/17, Stoney Acres, Athens. Country. Starts at 5 pm. 715-432-6285

380478.1.pdf

The file is missing!

SUMMER FUN CALENDAR

Levitt Amp Concert Series: newSong & Michelle Elle · Thurs. 8/15, Pfiﬀner Park Bandshell, Stevens Point. Hmong music. Starts at 6 pm. createportagecounty.org

Bored Teachers: The Struggle Is Real! · Fri. 8/16, Grand Theater, Wausau. Comedy. Starts at 7:30 pm. \$40-\$70. grandtheater.org

IRONBULL Underdown Trail Run · Sat. 8/17, hosted by IronBull at Merrill. Half marathon, marathon, 60k trail plus Thunderdown in the Underdown 13, 37 & 111 mile mountain bike at Underdown Recreational Area. Underdown Trail Races are grassroots trail runs in Northern Wisconsin.

It's located only 6 miles off Hwy 51. Underdown trail run starts at 9:30 am, 10:15 am, or 11:30 am. Bike rides start at 8 am, 9 am or 9:15 am. \$35-\$65. ironbull.org

History Hike · Sat. 8/17, hosted by Friends of Rib Mountain at Rib Mountain State Park, Wausau. Go for a hike and observe talk about the early settlement history in the park. Starts at 10 am. Free. ribmountain.org or 715-680-9480

EGOCON 2024 · Sat. 8/17, Sentry Curling Center, 1515 Maple Dr, Plover. Sci-fi fantasy gaming convention with Daleks, vendors, charity auction, activities & more. Starts at 10 am. \$15 admission. egocon.org

Jeff Erickson Quartet · Sun. 8/18, Kickbusch Plaza, Wausau. Jazz. Starts at 5 pm. Free. rivervalleyjazz.org

Central Wisconsin State Fair · Tues.-Sun. 8/20-8/25, fairgrounds in Marshfield. Many rides, food vendors, art contests, entertainment and more. Entertainment as follows: Tues: The Dweebs; Wed: Dylan Scott; Thurs: Hairball; Fri: Daughtry; Sat: Rodeo; Sun: Demolition Derby. \$30 season pass for adults, \$15 season pass for children, \$10 day pass for adult, \$5 day pass for children. Centralwisconsinstatefair.com

DISCOVER & EXPLORE COSTA DEL SOL, SPAIN OCTOBER 2024



Scan QR Code to Book Now!

ADELMAN
DISCOVERIES
M.M.C.
MOUNTAIN MUSEUM CENTER



9-DAY JOURNEY HIGHLIGHTS:

- Round trip scheduled airfare from ORD or MSP
- Round trip transfers between airports and hotels
- Personal airport VIP greeting and check-in service
- Pre-departure orientation and travel documents
- 7 nights First Class Accommodations
- Includes breakfast daily and 5 dinners
- Discovery Program Guide
- Full day tour of Granada, Malaga, and Ronda



BOOK NOW
for \$3,649 per person
**GET SEVILLE
TOUR FREE**
\$149 per person value



3 NIGHTS - \$849
(SINGLE SUPPLEMENT \$300)
Extend your stay with 3 extra nights in Madrid. Spain's majestic capital. Includes Hotel (Breakfast), train to Madrid, and City Tour.

**Departing
October 18, 2024**

GO TO TOURSMMC.COM FOR MORE INFO OR TO SIGN UP

For more information and a full brochure, please contact Chris Brough at (949) 253-9361 or email cbrough@adelmandiscoveries.com

Pizza on the Patio · Wed. 8/21, Willow Springs Garden, Wausau. Enjoy all you can eat homemade pizza, salad, bread, a featured dish, dessert, lemonade, milk, water and live music. Starts at 6 pm. \$16/person, \$5/person ages 6-10, free for ages 5 and under. willowsspringsgardens.com

Levitt Amp Concert Series: Chris Pierce · Thurs. 8/22, Pfiﬀner Park Bandshell, Stevens Point. Blues. Starts at 6 pm. createportagecounty.org

2024 Edgar Steam Show · Fri.-Sun. 8/23-8/25, Edgar Steam Show, Edgar. Learn about steam engines. Vendors and musical entertainment will also be present. Music at the barn lineup: Fri. Barefoot Becky & Ivanhoe Dutchman at 3 pm, Sat. The Polka Spirit at 1 pm, Hocus Pocus at 6 pm, Sun. Tom Knies Orchestra at 9 am, Music Connection at 2 pm. Music outside the tent: Fri. Northwoods Skitchers at 6:30 pm. Sat. Chicken Stanley at 2 pm. Jerry Schmitt Band at 7 pm. Starts at 6 am. \$10 per day, \$25 weekend pass, free for kids 12 and under. edgarsteamshow.com

Scott Kirby · Fri. 8/23, Stoney Acres, Athens. Americana. Starts at 5 pm. 715-432-6285

The Tape Face Show · Fri. 8/23, North Star Mohican Casino Resort, Bowler. Comedy. Doors open at 7 pm. Starts at 8 pm. \$25-\$35. northstarcasinosort.com

Open Tab · Sat. 8/24, Stoney Acres, Athens. Acoustic variety. Starts at 5 pm. 715-432-6285

Stetsin & Lace · Sat. 8/24, Tiki Beach Bar & Grill, Mosinee. Country. Starts at 6 pm. 715-341-2232

West Avenue Band · Tues. 8/27, Hodag Park, 509 Hodag Park Dr, Rhinelander. Hard rock/electric blues. Starts at 6:30 pm. 715-362-1975

Concert on the Square: Hip Pocket · Wed. 8/28, 400 Block, Wausau. R&B, rock. Starts at 6 pm. wausauevents.org

Dinner in the Vineyard · Wed. 8/28, Willow Springs Garden, Wausau. Enjoy a specialty-themed cocktail, appetizers, salad greens, homemade bread, two meat entrees, potatoes, rice, grilled veggies, dessert, after-dinner drink and wagon rides. Starts at 6 pm. \$70/person. willowsspringsgardens.com



PIZZA ON THE PATIO

Dinner in the Vineyard · Thurs. 8/29, Willow Springs Garden, Wausau. Enjoy a specialty-themed cocktail, appetizers, salad greens, homemade bread, two meat entrees, potatoes, rice, grilled veggies, dessert, after-dinner drink and wagon rides. Starts at 6 pm. \$70/person. willowsspringsgardens.com

Dan Schwarz & Nick Salisbury · Fri. 8/30, Stoney Acres, Athens. Americana, roots, jazz. Starts at 5 pm. 715-432-6285

Meaghan Owens · Sat. 8/31, Stoney Acres, Athens. Americana, country, folk, variety. Starts at 5 pm. 715-432-6285

SEPTEMBER

Pizza on the Patio · Wed. 9/4, Willow Springs Garden, Wausau. Enjoy all you can eat homemade pizza, salad, bread, a featured dish, dessert, lemonade, milk, water and live music. Starts at 6 pm. \$16/person, \$5/person ages 6-10, free for ages 5 and under. willowsspringsgardens.com

Dinner in the Vineyard · Thurs. 9/5, Willow Springs Garden, Wausau. Enjoy a specialty-themed cocktail, appetizers, salad greens, homemade bread, two meat entrees, potatoes, rice, grilled veggies, dessert, after-dinner drink and wagon rides. Starts at 6 pm. \$70/person. willowsspringsgardens.com

The Hayes Boys Orchestra · Fri. 9/6, Stoney Acres, Athens. Polka. Starts at 5 pm. 715-432-6285

Art World · Sat.-Sun. 9/7-9/8, hosted by Almond Tree Events at Marathon Park, Wausau. Arts and crafts on display indoors, food, entertainment & more. Starts at 9 am. Free admission. almondtreeevents.com

Scott Kirby · Sat. 9/7, Stoney Acres, Athens. Americana. Starts at 5 pm. 715-432-6285

The SYNTHetics · Tues. 9/10, Hodag Park, 509 Hodag Park Dr, Rhinelander. Synth-pop. Starts at 6:30 pm. 715-362-1975

Midwest Backpacking Summit · Thurs.-Sat. 9/12-9/14, hosted by IronBull at Jack Lake Campground at Veteran's Memorial Park, Deerbrook. Join experienced to first-time bikepackers for a weekend of fun in northern Wisconsin. From free group rides, lakeside camping, free expo & speakers, and of course bikepacking all are sure to meet a riding buddy, learn something, and immerse themselves in the northwoods. Starts at 3 pm. \$65 camping fee. Expo is free. ironbull.org

Big Taste 2024 · Thurs. 9/12, hosted by Big Brothers Big Sisters of Northcentral Wisconsin at Granite Peak Ski Resort, Wausau. Enjoy food, drinks, auction tables and live music. Benefits help youth mentoring programs. Starts at 5 pm. bbbsncw.org

European Extravaganza · Fri. 9/13, Stoney Acres, Athens. Waltz, polka, European music. Starts at 5 pm. 715-432-6285

32nd Annual Maple Fall Fest · Sat.-Sun. 9/14-9/15, hosted by Visit Marshfield at Wildwood Park, 1800 S Roddis Ave. Features over 150 arts & crafts vendors, potato pancake breakfast, a children's area, Amish specialties, beer garden, food court, inflatable rides & more. Starts at 9 am. Free. Visitmarshfield.com

Rec Release · Sat.-Sun. 9/14-9/15, Wausau Whitewater, 200 River Dr, Wausau. Paddle or slalom in the waters. Learn how to kayak. ACA membership, helmet, boat floatation, life jacket required. Starts at 10 am. \$20 per day, \$30 per weekend, \$10 ACA fee. wausauwhitewater.org

SUMMER FUN CALENDAR

Ecology Hike · Sat. 9/14, hosted by the Friends of Rib Mountain at Rib Mountain State Park, Wausau. Go for a hike and learn about the late summer environment on the top of Rib Mountain. Starts at 10 am. Free. ribmountain.org or 715-680-9480

18 Strings · Sat. 9/14, Stoney Acres, Athens. Folk, bluegrass, blues, Americana roots. Starts at 5 pm. 715-432-6285

Scaled Up Reptile Expo · Sun. 9/15, hosted by Scaled Up Expo at Central Wisconsin Convention and Expo Center, 10101 Market St, Rothschild. Look at the reptiles from different breeders, stock up on supplies and possibly take a reptile home. Starts at 10 am for VIP, 11 am for general admission. \$12 VIP admission, \$6 general admission, free for ages 5 and under. scaledupexpos.com

Uptown · Sun. 9/15, hosted by the Merrill Area Concert Association at Merrill High School Auditorium, Merrill. Pop, soul, R&B. Starts at 3 pm. \$60 adult, \$20 student, \$130 family membership. merrillconcerts.org

Pizza on the Patio · Wed. 9/18, Willow Springs Garden, Wausau. Enjoy all you can eat homemade pizza, salad, bread, a featured dish, dessert, lemonade, milk, water and live music. Starts at 6 pm. \$16/person, \$5/person ages 6-10, free for ages 5 and under. willowsspringsgardens.com

Wausau Belly Dance · Sat. 9/21, Stoney Acres, Athens. Variety. Starts at 5 pm. 715-432-6285

Classical Thursdays · Thurs. 9/26, Woodson Art Museum, Wausau. Enjoy music performed by the Central Wisconsin Symphony Orchestra while taking a stroll through the gallery. Starts at 5:30 pm. Free. cwso.org

Cedar Creek Mall Craft & Vendor Show · Sat. 9/28, Cedar Creek Mall, Rothschild. Craft and vendor show. Starts at 9 am. cedarcreekmall.com

Rec Release · Sat.-Sun. 9/28-9/29, Wausau Whitewater, 200 River Dr, Wausau. Paddle or slalom in the waters. Learn how to kayak. ACA membership, helmet, boat floatation, life jacket required. Starts at 10 am. \$20 per day, \$30 per weekend, \$10 ACA fee. wausauwhitewater.org

Oktoberfest 5k Run/Walk · Sat. 9/28, hosted by the Mosinee Area Chamber of Commerce at City Square Park, Mosinee. Enjoy a 5k run/walk, German-inspired food, live music, refreshments & more. Starts at 10 am. \$35. mosineechamber.org

2024 Ultra Trail 50k, 25k & 15k · Sat. 9/28, hosted by IronBull at Rib Mountain State Park, Wausau. Put your body to the test with a 15k, 25k or 50k race from the Rib Mountain State Park trail to the State Park Speedway race track. Packet pickup at 5 pm. 50k & 25k race starts at 7 am. 15k race starts at 1 pm. ironbull.org

Meaghan Owens · Sat. 9/28, Stoney Acres, Athens. Americana, country, folk, variety. Starts at 5 pm. 715-432-6285

Wisconsin Valley Golf Association 2024 Season Points Championship · Sun. 9/29, RiverEdge Golf Course, Marshfield. 27 hole championship with double points. Open to everyone with points awarded if you have competed in at least three other events. Starts at 9 am. \$55. <https://www.wivalleygolf.org/>

ARTS/EXHIBITS

North Woods Art Tour · Fri.-Sun. 7/26-7/28, hosted by North Woods Art Tour. Tour across Vilas, Oneida, Iron, Langlade and Lincoln counties and check out different arts and crafts. Visit northwoodsarttour.com for list of open galleries and more info

Q Artists Cooperative, Stevens Point · 1108 Main St, Stevens Point. Ongoing exhibits of the work of more than thirty local artists in a variety of media, featured shows rotating every two months. New Winter hours 11 am-4 pm daily. qartistscooperative.com

Riverfront Arts Center, Stevens Point · Open Wed.-Fri. 11 am to 5 pm. Sat. & Sun. 11 am to 3 pm. stevenspoint.com/rac

Woodson Art Museum, Wausau · Free. Open Tues.-Fri. 9 am-4 pm, first Thurs. of each month 9 am-7:30 pm, Sat.-Sun. noon-5 pm and closed Mon. & holidays. lywam.org

A Civic Wilderness · now until 6/16. Woodson Art Museum, Wausau. Experience the poetic juxtaposition of nature's persistence against the backdrop of human intervention. lywam.org

Birds in Art 2024 · Sat.-Sun. 9/7-12/1. Woodson Art Museum, Wausau. Exhibit will feature over 100 paintings, sculptures, and graphics of birds. Lywam.org

Artrageous Weekend · Sat.-Sun. 9/7-9/8, downtown Wausau. Annual art tour festival at four locations. Shuttles and admission are free: Art in the Park: located at Marathon Park. More than 120 exhibitors with arts and crafts such as pottery, painting, photography and other works. Opens 9 am to 5 pm Sat. and 9 am to 4 pm Sun. wivalleyart.org; Festival of Arts: located on Third Street and the 400 block. Over 120 juried art pieces. Art activities available for children. Silent auction, food and beverages available. Open Sat. 10 am to 5 pm and Sun. 10 am to 4 pm. Wausafoa.org; Center for the Visual Arts: located at 427 N. Fourth Street, check out artwork from four gallery spaces and participate in art activities. Open Sat. 10 am to 5 pm and Sun. 10 am to 4 pm. Cvawausau.org; Birds in Art: located at the Leigh Yawkey Woodson Art Museum. Check out multiple art pieces inspired by birds. Opens 9 am to 5 pm on Sat. and 10 am to 5 pm on Sun. with artwork staying on display for view through 12/1. Lywam.org

Wausau Museum of Contemporary Art · Open 11 am-3 pm Tues-Sat. Wmoca.org

Center for the Visual Arts, Wausau · Free. Gallery hours Wed.-Fri. 10 am-4 pm; Sat. 12 pm-4 pm. Closed Sun.-Tues. 715-842-4545, cvawausau.org. Inspired by activities and events.

Merrill Historical Society Museum, Merrill · Free. Gallery hours Mon.-Fri. 9 am-1 pm. 715-536-5652. discovermerrillhistory.org

Keeping Up Appearances-Suds, Duds & Irons · Opening 2/26. This exhibit showcases more than 60 individual & unique restored irons, washing devices & old laundry soap. discovermerrillhistory.org

Marathon City Heritage Center · Open from noon to 2 pm on the second Sunday of each month from Oct. to April, Open Sun. 4/5 noon-2 pm and 5/3 noon-2 pm. 715-443-2221. marathoncity.org

Marathon County Historical Society · Open Tues.-Fri. 9 am-4:30 pm. Sat.-Sun. 1 pm-4:30 pm. marathoncountyhistory.org/facilities/exhibits.

Peek Inside: See What We Collect and Why · Ongoing exhibit at the Marathon County Historical Society. View items on display and learn why they are a part of the Historical Society's collection. marathoncountyhistory.org/facilities/exhibits

Our Stories: The History of Marathon County · Jan. 2022 thru Dec. 2025. Learn about the stories of people who lived in Marathon County for a long time. Themes include arriving here, making a living and having fun. marathoncountyhistory.org/facilities/exhibits

Motorama Auto Museum, Aniwa · Open Wed.-Sat. 9 am to 5 pm from May to Oct. Check out over 500 rare, vintage vehicles. \$10 admission, free for kids 15 and under. motoramaautomuseum.org



A touch of nature in each cup.

Introducing...

**Ethiopian
Yirgacheffe
Chelba
Single Origin
Third Wave Coffee**



**NICOLET
COFFEE CO.**
Fresh as the Northwoods

NEW! Medium roast, with a spice and wine or chocolate-like taste and a floral aroma.

100% Specialty Grade Gourmet Coffee – roasted and shipped from the Wisconsin Northwoods.

nicoletcoffee.com

FREE Shipping!
Visit our website for details.



FIVE PADDLE SPOTS IN THE WAUSAU AREA

By B.C. Kowalski

Take a stroll along just about any slow-moving body of water these days and you're bound to see a kayak or two; maybe a standup paddle board or even sometimes a windsurfer or sailboat.

There's just nothing that says summer like a day spent on top of the water in a kayak or paddleboard. Even better if it's with your friends, and you stop and find a place to eat together (or even have a pop or two together).

TRAIL'S END LANDING — LITTLE RIB RIVER

This spot is one of my favorite spots for a quiet, nature filled paddle full of interesting wildlife and foliage. There's also an option to add on a not-so quiet experience watching live music at Trail's End when you're done. The water is pretty slow moving, though paddling upstream can be a little bit of a chore. And, boat traffic is pretty minimal since many of the channels are shallow. The sandbars make good stopping points and the bigger ones will also have pontoons parked, and they turn into little mini-parties. One warning though, it can be a little bit of a maze to navigate. Fortunately cell signal is pretty good and a mapping program can help you find your way back.





RIVERLIFE LANDINGS — WISCONSIN RIVER

The RiverLife docks have one of the coolest kayak launches — the kind where you set your kayak on top and place your paddle in the slots to push yourself into the water. The area north of the launch has some really cool scenery, with sandy island beaches and large cliffs of pine trees. The water is generally slow moving but it's also a deep part of the river, so paddle with care and keep an eye on conditions. WOW Family Entertainment Center is conveniently nearby for a post-paddle lunch or dinner, or all those lovely restaurants downtown aren't too far away either.

DC EVEREST PARK — LAKE WAUSAU

DC Everest Park provides a nice landing with a couple of options for getting your kayak in the water. There's plenty of parking in and near the park, and for those without kayaks, you can rent one from a kiosk right along the water. We've seen swans, geese, herons and all kinds of birds on our various group paddles. It's a full lake that connects with the Wisconsin River — most motorized boats are courteous but be mindful of big waves from the wakes of boats, and check conditions carefully before embarking. Eagle's Nest is right near the park for a post-paddle bite to eat.





THE SCHOFIELD DAM — EAU CLAIRE FLOWAGE

It's kind of a little hidden secret in plain site — but the landing near the Schofield dam is a nice place to launch from, and though you feel like you're starting in the middle of town, you pretty quickly end up in wooded area with less civilization in site. The docks near the Schofield dam do have a dedicated kayak launch. Follow this wise advice and paddle away from the dam. You shouldn't be in any danger as long as you don't go near it. Going under an old railroad bridge is one of the highlights of the paddle. Scanni's is pretty close for a post-paddle bite, but since you're right in town nothing is too far away.





BABL LANE LANDING — EAU CLAIRE RIVER

Weston put some real effort into this landing, with a little dedicated parking lot and a boat launch for kayaks. It's a really cool stretch of river but be warned, this water can be fast-moving and dangerous earlier in the year, while generally smoothing out later in the season. If you're a beginner or don't feel confident with your kayaking abilities, it might be best to go with someone more experienced. Any good restaurant would do for a post-paddle bit, but many in our group really like Trailside — the food is affordable and delicious.



ROAD TRIP IDEAS



Self-guided waterfall tours in Marinette County

By Kaity Coisman

MARINETTE COUNTY – Journey to the waterfall capital of Wisconsin for self-guided waterfall tours. Marinette County contains 15 waterfalls presented in four self-guided tours which require a drive from one site to the next. Allocate two to three days this spring or summer to complete all four tours. The tours contain diversified difficulty

ratings and distances. The Explore Marinette County Map contains the tours in the centerfold with directions of each tour and amenities that can be found on the trails.

A Marinette County park pass will be required to enter Marinette County-owned parks. Day passes are for purchase at any park or secure both annual and day passes in advance at marinettecountywi.gov/parks/.

THE TOURS

The Rocky Trails Tour will require a Marinette County Pass and a Michigan Recreation Passport. The tour includes a difficult-level, 250-yard hike on unimproved hiking surfaces with steep climbs to Smalley Falls, located on the Pemebonwon River. Smalley Falls is on the same river as Long Slide Falls, which includes a moderate-level quarter-mile hike on mostly smooth dirt paths with variable width and uneven surfaces. The Menominee River hosts another moderate-level quarter-mile hike to Pier's Gorge. The trilogy concludes with an easy level 175-yard hike to Quiver Falls. This hike includes a smooth dirt path with minimal uneven surfaces.

The Log Jam Tour includes two waterfalls located on Pike River and requires a Marinette County Pass. The first is Dave's Falls, which includes a moderate 250-yard hike. Bull Falls follows, located at the end of a difficult level 250-yard hike.

The most extensive tour includes six waterfalls - all located on Pike River. A Marinette County Pass is required for parts of the tour. First on the Hidden Falls Tours is Carney Rapids, visible from the roadway bridge. Following is a moderate-level 225 yards to Four Foot Falls. Difficulty escalates to the Eighteen Foot Falls, requiring a difficult-level 300-yard journey. The complexity drops to an easy-level 350-yard hike to Twelve Foot Falls. Next is

Eight Foot Falls, which includes a moderate-level 225-yard hike. Completing the tour is Horseshoe Falls, including a moderate-level 0.7 mile hike.

The Enchanted Trails Tour requires a Marinette County pass to view all three waterfalls. First is Veteran's Falls, located on the tail end of a moderate-level 125-yard hike. Sequentially is McClintock Rapids requiring a moderate-level 275-yard hike. Finally, an easy-level 175-yard hike leads to Strong Falls.

ELEMENTS OF CONSIDERATION

The range of skill levels ensures something for everyone. A variable to consider is the tours aren't certified ADA-accessible.

"There are no boardwalks or man-made structures you are in the woods in untouched areas," Marinette County Development and Tourism Director Jennifer Short explained. However, this means that the trails create a serene environment. "It is a peaceful moment even though you can hear the power of the water. The rushing water is cool. It is just nice to be out in nature," stated Short. The tours are open to all, including furry friends. "All of these locations are dog friendly, so if you're on a road trip, at the cabin, or camping, bring the family and your four-legged friend and get out and enjoy nature."

Get outside &
explore this
summer!

ADVERTISER INDEX

advertiser index

W a u s a u Festival of Arts 2024

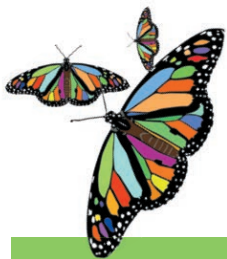
Downtown Wausau

September 7th 10-5 PM

September 8th 10-4 PM

**Sponsorship opportunities
still available!**

See our contact info below.



In addition to over a hundred artists, the square will be filled with LIVE MUSIC, GOOD FOOD, and COLD DRINKS along with these favorites:

- Family Art - Many creative activities for children with their parents.
- Young Collector Market - Children 12 and under can view and purchase donated art.
- Scholarship Silent Auction - Bid on art donated by participating artists.
- Still Young at Art - Classes taught by professional artists in the upper classroom area of the CVA next to the Grand Theater.

Presenting Sponsor



Contact us for info:
P.O. Box 1763
Wausau, WI 54402
Phone: 715.842.1676
info@wausaufoa.org



For more information visit:
www.wausaufoa.org



WAUSAU
FESTIVAL
OF
ARTS

380517.1.pdf

The file is missing!